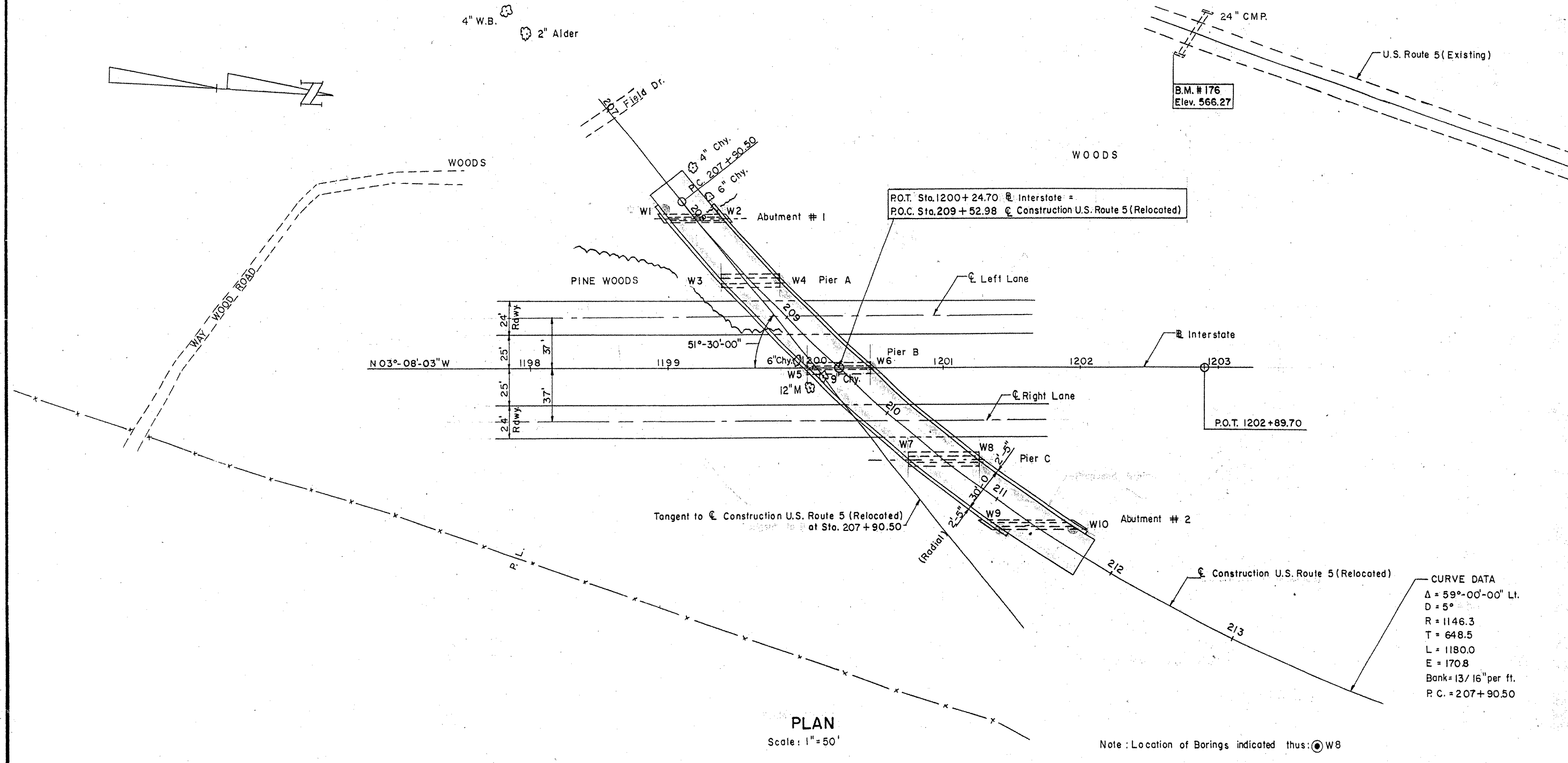


HIGHWAY NO.	Rt. 1 Sec. 1-100	NAME OF HIGHWAY	Interstate	B. P. R. DIV. NO.	STATE	PROJECT NO.	SHEET NO.	TOTAL SHEETS
STRUCTURE NO.	191-1(10)	COUNTY	Windham	TOWN	Putney	I 91-1(10)	121	328
PROJECT NO.	191-1(10)	LOCATION	Sta. 1200+24.70					



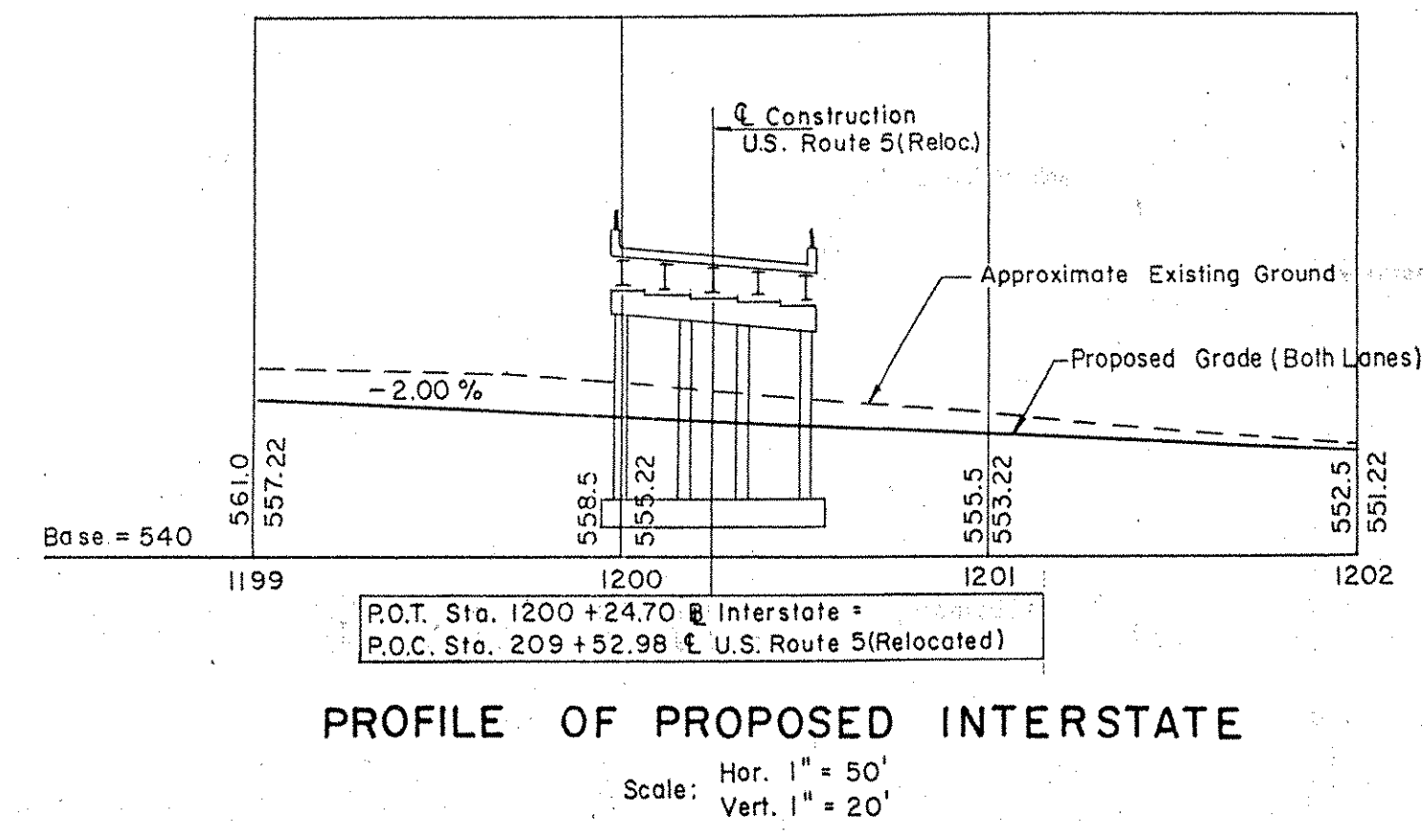
FOUNDATION INFORMATION
OBTAINED FOR DESIGN PURPOSES ONLY, AND THE STATE ASSUMES NO RESPONSIBILITY WHATSOEVER FOR THE SUFFICIENCY OR ACCURACY OF THE INFORMATION SHOWN. BOULDERS MAY BE ENCOUNTERED AT ANY PIER OR ABUTMENT LOCATION. FOR BORING LOGS, SEE SHEET NO. 121

GENERAL NOTES

DESIGN SPECIFICATIONS:
AASHTO 1957 Edition and as modified by Vermont Dept. of Highways.
LIVE LOAD: H20-S16-44 and Military Loading.
DESIGN STRESSES:
Structural Steel $f_s = 18,000$ p.s.i.
Reinforcing Steel $f_s = 20,000$ p.s.i.
Concrete $f_c = 1,200$ p.s.i. for $f_c + 3,000$ p.s.i.
CLEARANCE:
Horizontal: as shown on drawings.
Vertical: $15'-3"$ (Lt. Lane Interstate).

SUPERSTRUCTURE:
30' Roadway, 1'-6" Safety Walks, as per SCB-30-56.
4 simple spans, rolled beams, composite designs, similar to SCB-30-56, (64'-89'-99'-79' As Modified)
Aluminum bridge railing, or galvanized bridge railing, and granite bridge curb as per SB-56-57 (1 & 2).
Bearing and diaphragm connections as per SB-20-56, Approach Slabs as per SB-AS-45-Skew-57. As Modified.

SUBSTRUCTURE:
Open piers, round columns continuous footings.
Stub abutments.
FOUNDATIONS:
Piers: Spread Footings.
North Abutment: Steel Piles, 35 Ton Design Load.
South Abutment: Spread Footing.



SUMMARY OF QUANTITIES

ITEM NO.	DESCRIPTION	UNIT	NET	OVERRUN	TOTAL	FINAL
107	Structure Excavation	C.Y.	484	49	533	437
204	Sub-base of Crushed Rock (Mod.)	C.Y.	475	20	495	213
222	Gravel Backfill	C.Y.	70	20	90	159
361-B	Bit. Conc. Pavement (S.A. 5-22-61)	Tons	15.5	8.8	24.3	15.5
401-B	Concrete Class B (Mod.)	C.Y.	83.5	4	87.5	913
402	Reinforcing Steel	Lbs.	44,656	-	44,656	131,350
403	Spiral Reinforcement (S.A. 6-8-61)	L.S.	1	-	1	1
404-A	Structural Steel	Lbs.	498,890	9,900	508,790	492,245
407	Asphaltic-Asbestos Coating	S.Y.	88	-	88	88
504	Steel Piling	L.F.	440	-	440	535
556-C	Granite Bridge Curb (Type I)	L.F.	70	-	70	712
572	Bridge Rolling (Mod.) (S.A. 9-14-60)	L.F.	648	-	648	648
501	Furnishing Equip. for Driving Piles	Required	-	-	-	1
503	Splices for Steel Piling	Lbs.	-	-	-	0
310	Tar Emulsion for Bridge Floors (Sup. App. 5-25-61)	Gal.	-	-	-	385
372	Joint Sealer, Hot Poured Elastic Type (Sup. App. 4-14-61)	Gal.	-	-	-	273

LIST OF SHEETS

SHEET NO.	DESCRIPTION
121	GENERAL PLAN
122	BORINGS
123	PLAN & ELEVATION
124	ABUTMENTS NO. 1 & 2
125	PIERS A, B & C
126	APPROACH SLABS
127	STRUCTURAL STEEL PLAN
128	STRUCTURAL DETAILS
129	REINFORCING SCHEDULE
130	
47.8	
52A	
52	
53	
54.8	
57	

PUTNEY - BRIDGE 19A
NH F019-1(15)
SHEET NO. 70 OF 75
FOR REFERENCE ONLY

IM 091-1(31)
This sheet for information only
BR 17 BRIDGE 17
GENERAL PLAN
STATE OF VERMONT
DEPARTMENT OF HIGHWAYS
INTERSTATE PROJECT in the town of
PUTNEY
INTERSTATE Sta. 1200+24.70
UNDER
U.S. ROUTE 5 (REL.) Sta. 209+52.98

APPROVED BY *John Carson* DATE 7/24/58
THE CLARKESON ENGINEERING CO. INC.
CONSULTING ENGINEERS
BOSTON MASSACHUSETTS
SURVEYED BY H.B.C. CHECKED BY D.S. SCALE AS NOTED
DRAWN BY J.W.B. IN CHARGE J.V.B. DATE 10-25-57
PROJECT NO. I 91-1(10) SHEET 121 OF 328