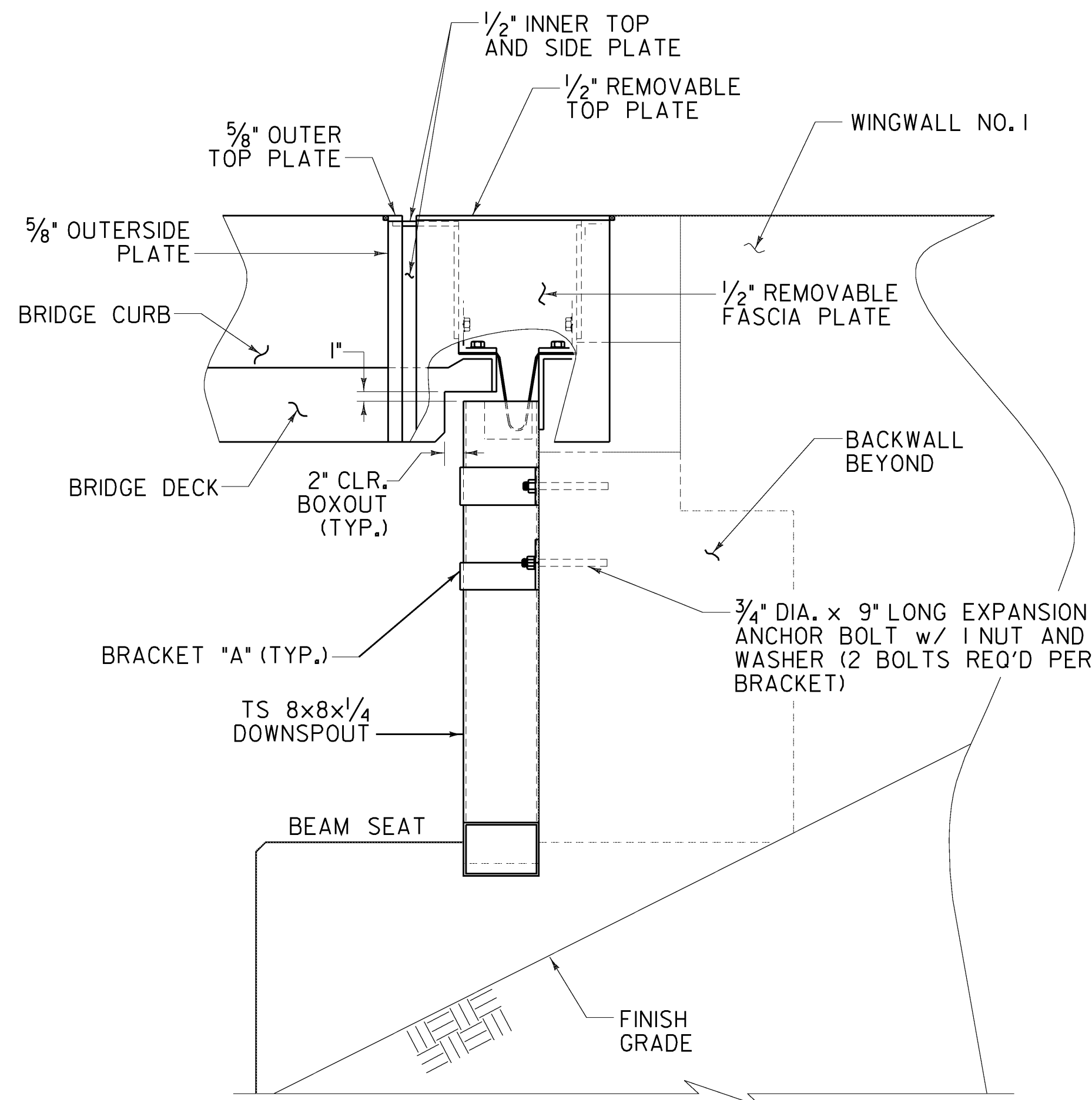
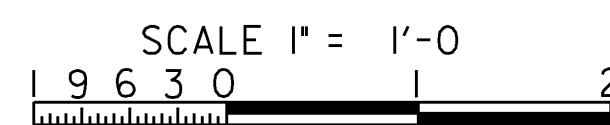
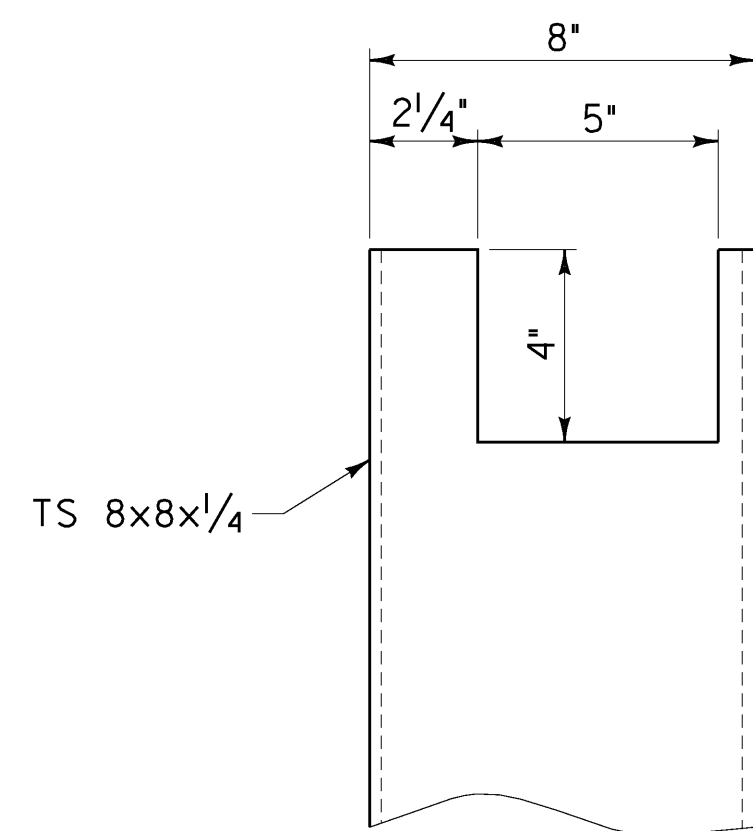
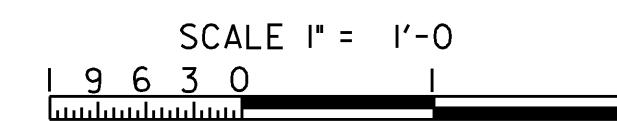


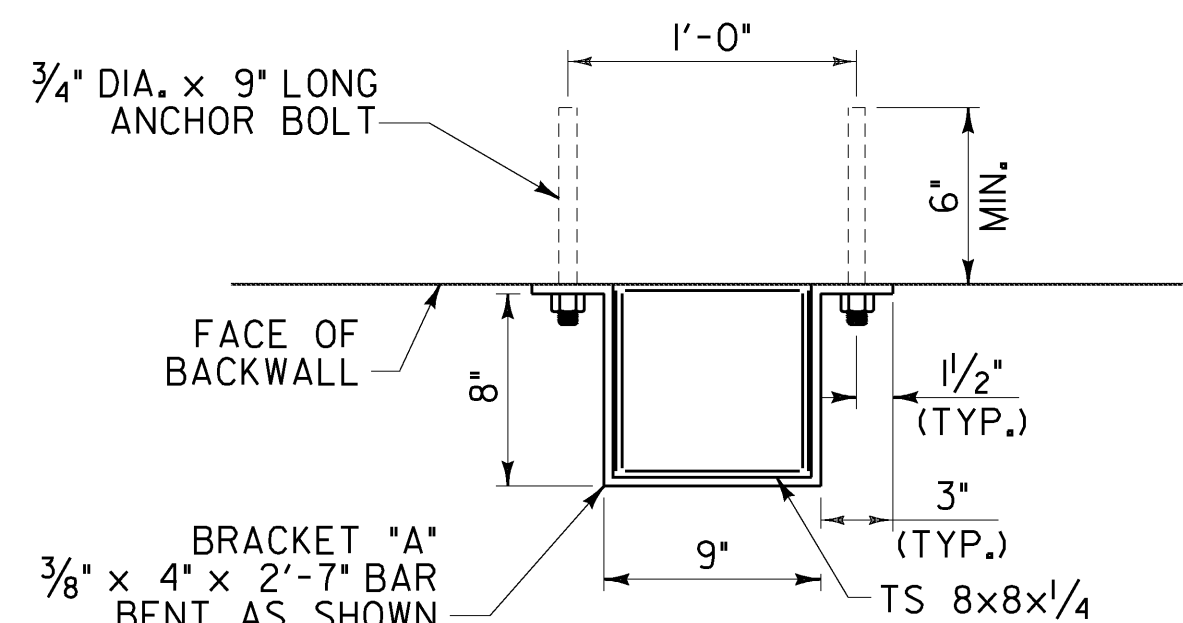
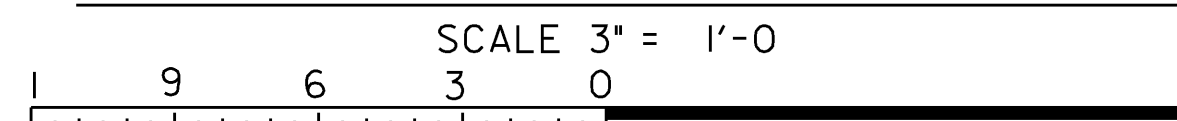
ABUTMENT 1 - DOWNSPOUT FRONT ELEVATION



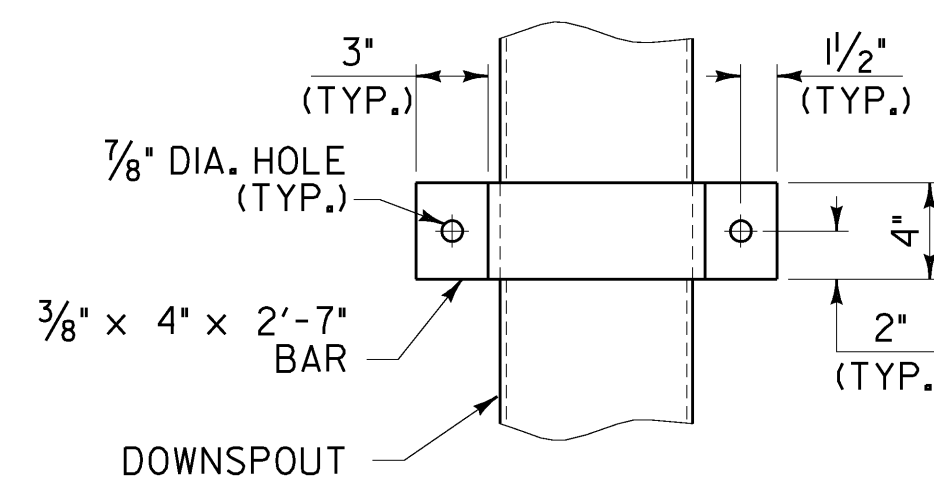
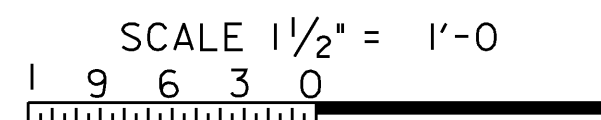
ABUTMENT 1 - DOWNSPOUT SIDE ELEVATION



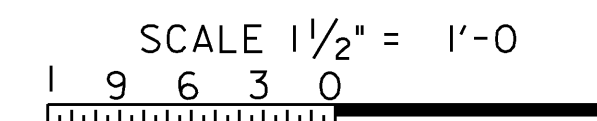
DOWNSPOUT CUTOUT FOR TROUGH



DETAIL FOR ATTACHING DOWNSPOUT TO BACKWALL



ELEVATION VIEW OF BRACKET A



DOWNSPOUT NOTES

1. HOLLOW STRUCTURAL STEEL TUBING SHALL CONFORM TO ASTM A500 OR A501.
2. ALL PLATES, BARS, AND ANGLES SHALL CONFORM TO AASHTO M 270M/M 270 GRADE 36.
3. DOWNSPOUTS SHALL BE GALVANIZED IN ACCORDANCE WITH ASTM A-123 AFTER FABRICATION.
4. ALL BOLTS AND RELATED HARDWARE SHALL BE ASTM A307 AND SHALL BE GALVANIZED IN ACCORDANCE WITH ASTM A513 (AASHTO M 232M/M 232).
5. IN AREAS WHERE THE GALVANIZING HAS BEEN REMOVED FROM THE DOWNSPOUT EITHER BY CUTTING, BURNING, WELDING, PLACING, OR ANY OTHER MEANS, IT SHALL BE REPAIRED BY THOROUGHLY CLEANING THE DAMAGED AREAS WITH A WIRE BRUSH AND PAINTING THE DAMAGED AREAS WITH TWO COATS OF AN APPROVED SEALANT. PAYMENT WILL BE CONSIDERED INCIDENTAL TO CONTRACT ITEM 506.60.
6. ALL MATERIALS AND INSTALLATION COSTS FOR THE DOWNSPOUT, INCLUDING STEEL TUBING, RELATED HARDWARE, AND ANCHOR BOLTS SHALL BE PAID FOR UNDER ITEM 506.60 "STRUCTURAL STEEL".
7. FOR ABUTMENT 2 DOWNSPOUT DETAILS REFER TO SHEET 38.

**STATE OF VERMONT
AGENCY OF TRANSPORTATION**

Town Of	PUTNEY	Bridge No.	19A
Highway No.	U.S. ROUTE 5	Log Sta.	
		Surv. Sta.	
U.S. ROUTE 5 OVER I-91			
DOWNSPOUT DETAILS 1			
Designed By	T. KNIGHT	Drawn By	R. WALKER
Checked By	T. KNIGHT	Date	06/09
		Bridge Design Supervisor	G. BOGUE
		Date	06/09
PROJECT	PUTNEY	PROJECT NO.	IM 091-(31)
CAD Drawing Name:	...\\Plot Files\37 2938168.dwg 10/19/2009		
Bridge Sheet No.		Sheet	37 of 75

