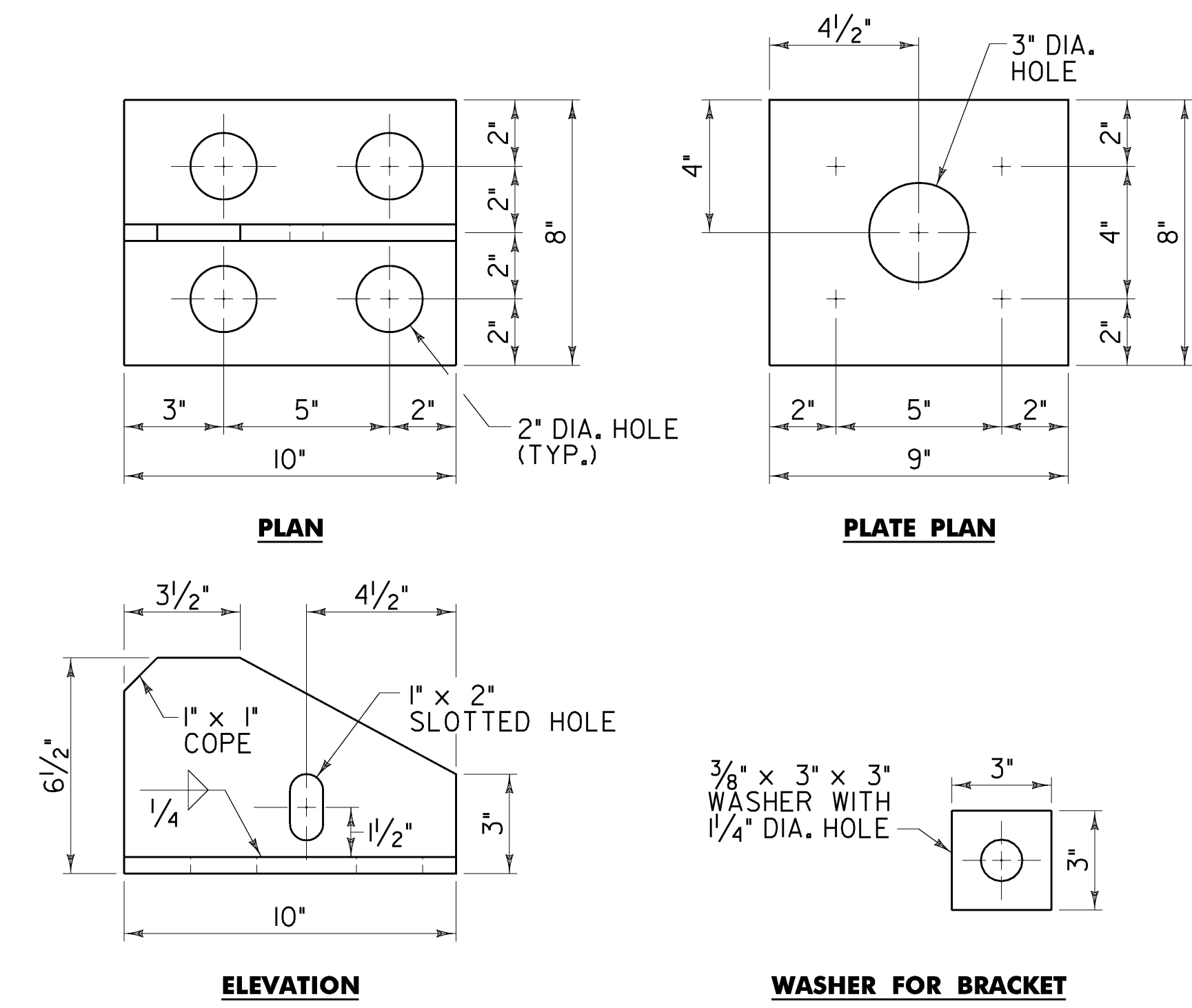


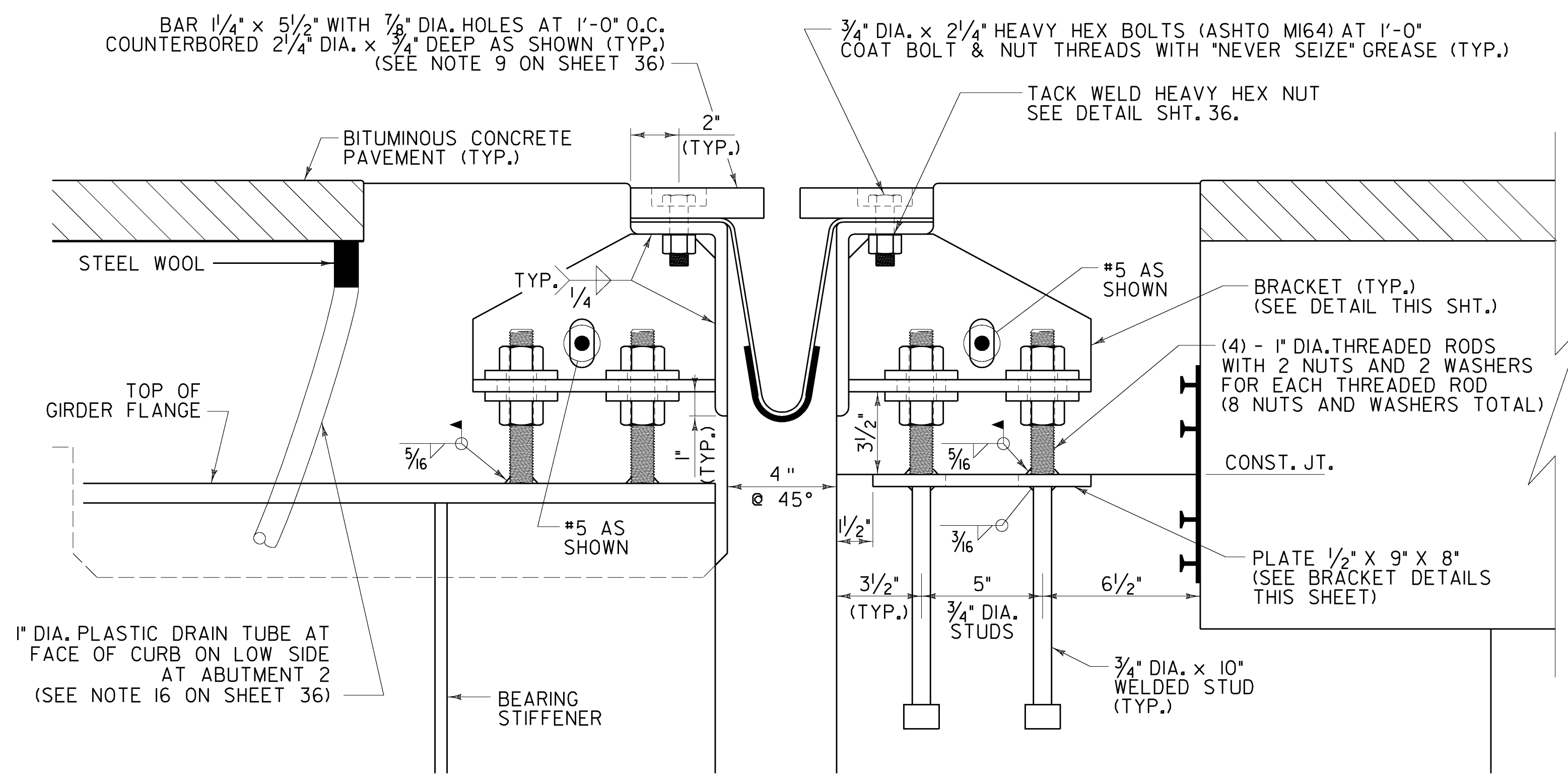
TYPICAL SECTION BETWEEN GIRDERS

(NORMAL TO CL BEARING)



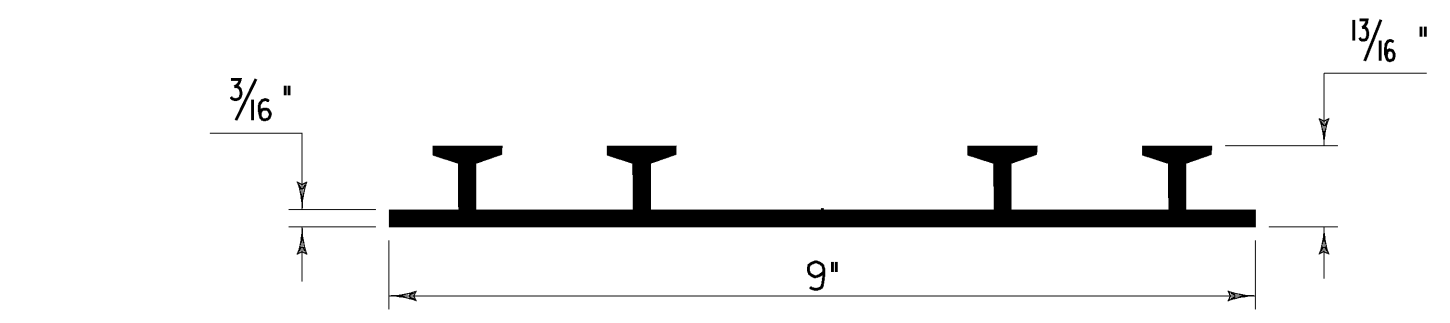
NOTE: ALL PLATES SHALL BE 1/2\"/>

BRACKET DETAILS



TYPICAL SECTION AT GIRDERS

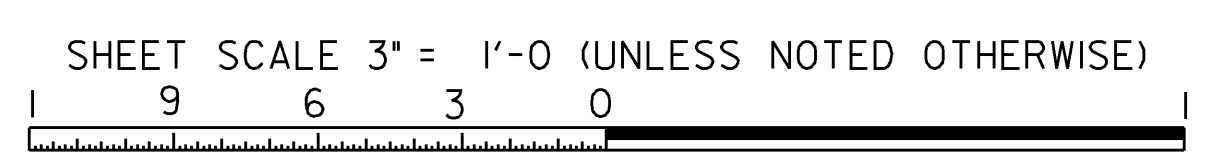
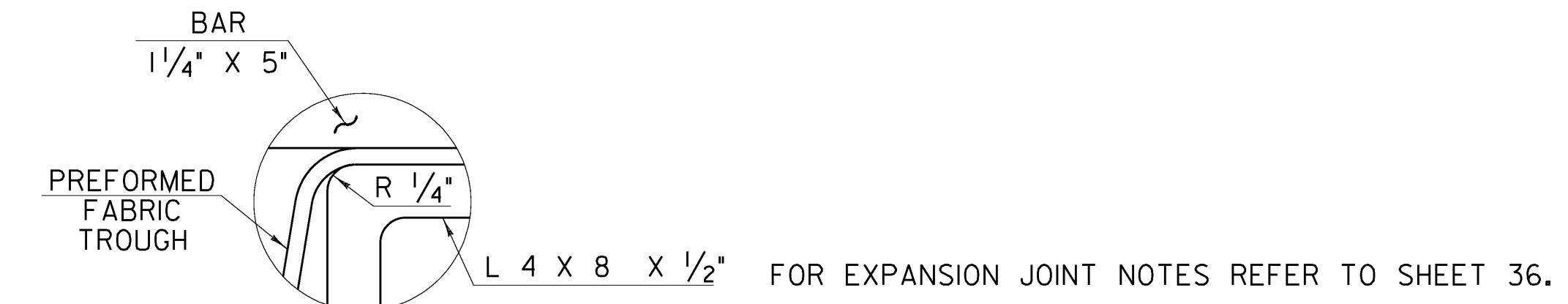
(NORMAL TO CL BEARING)



P. V. C. WATERSTOP FOR CONSTRUCTION JOINTS

THE COSTS FOR P. V. C. WATERSTOP SHALL BE INCLUDED IN THE UNIT PRICE BID FOR CONCRETE. OTHER CONFIGURATIONS MAY BE USED UPON APPROVAL OF THE STRUCTURES ENGINEER.

TEMP	"A" DIST
0° F	1 5/8"
15° F	1 7/16"
30° F	1 3/8"
45° F	1"
60° F	13/16"
75° F	9/16"
90° F	7/8"
105° F	3/8"



**STATE OF VERMONT
AGENCY OF TRANSPORTATION**

Town Of	PUTNEY	Bridge No.	19A
Highway No.	U.S. ROUTE 5	Log Sta.	
		Surv. Sta.	
U.S. ROUTE 5 OVER I-91			
EXPANSION JOINT DETAILS 1			
Designed By	T. KNIGHT	Drawn By	T. KNIGHT
Checked By	G. BOGUE	Date	06/09
		Bridge Design Supervisor	G. BOGUE
		Date	06/09
PROJECT	PUTNEY	PROJECT NO.	IM 091-(31)
CAD Drawing Name:	...\\35 z93a148Exp1+2.Bbf	Date:	10/19/2009
Bridge Sheet No.		Sheet	35 of 75

