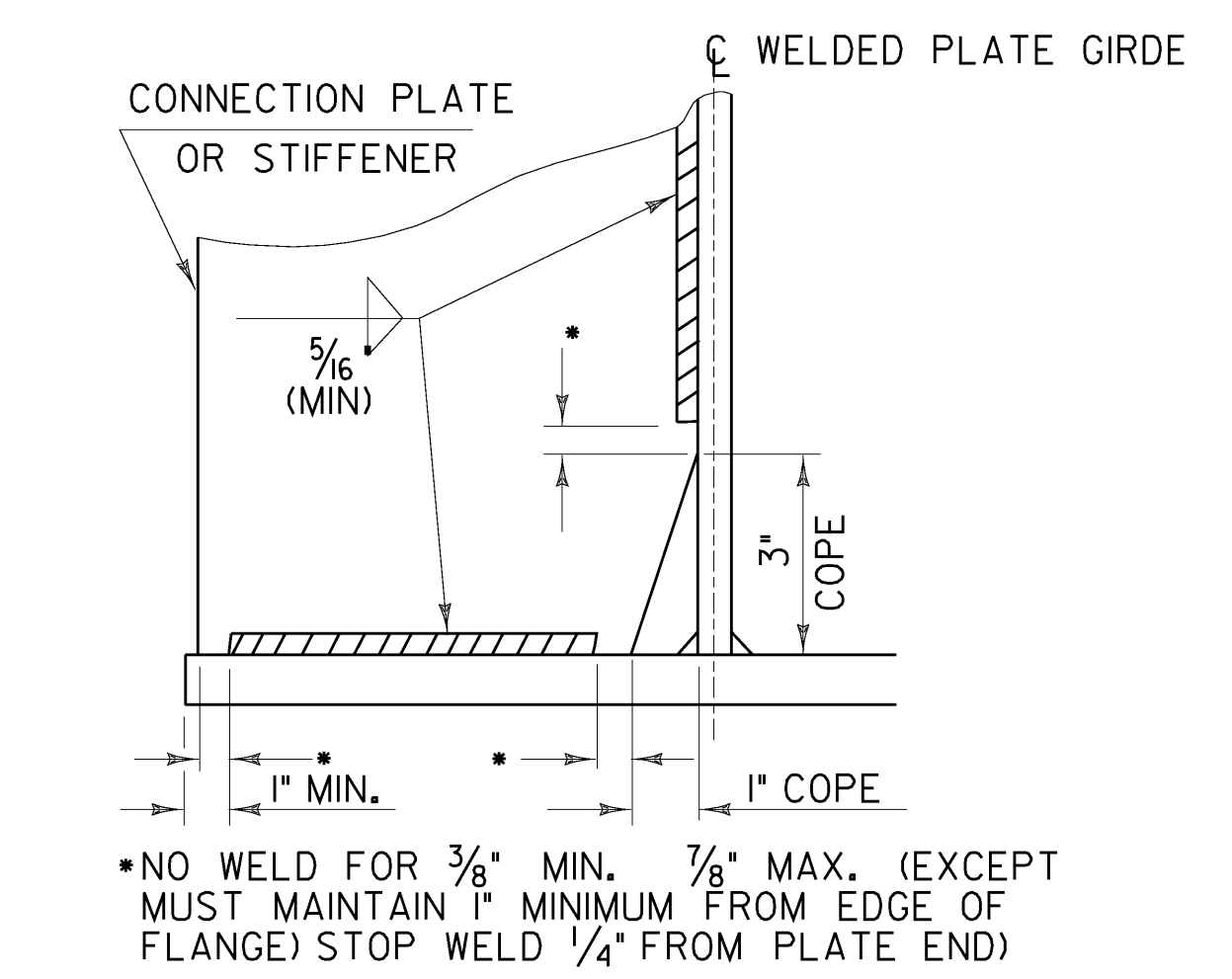


ELEVATION

SECTION A-A

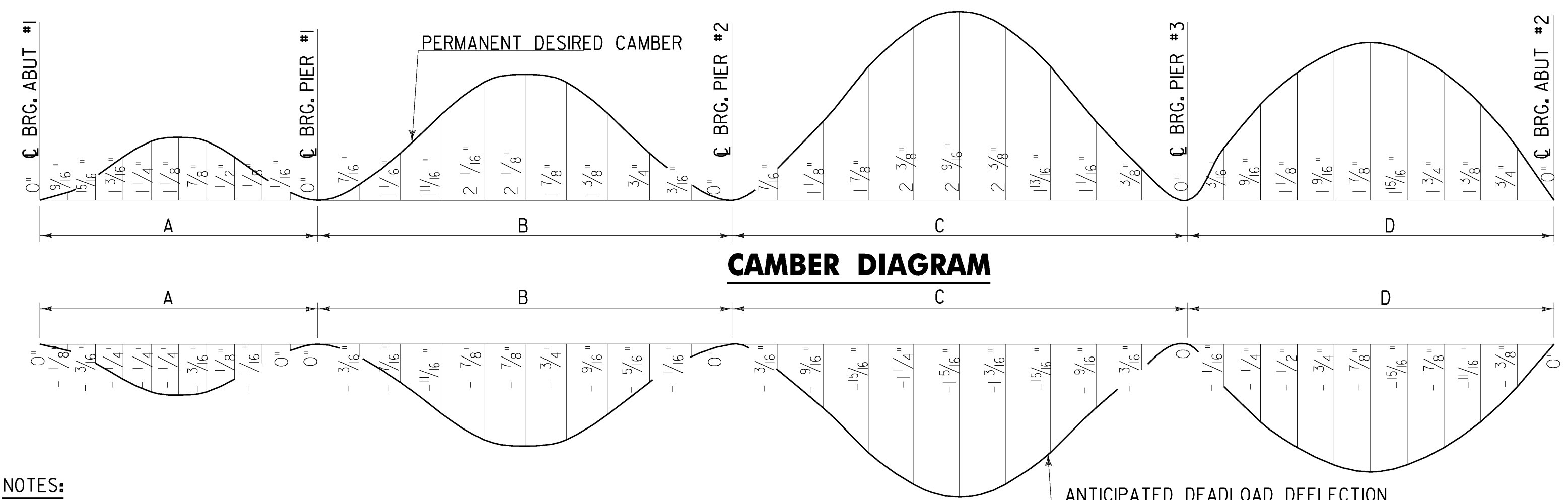
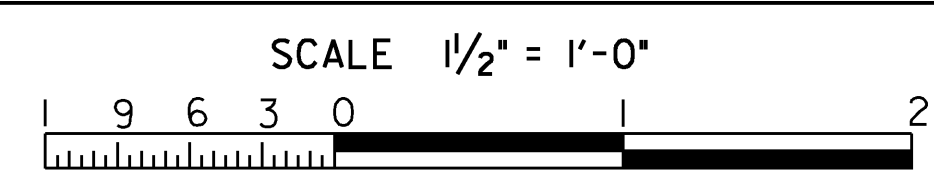
ALL PLATES SHALL BE CHARPY V-NOTCH TESTED



**WELD TERMINATION AND COPING
DETAILS FOR STEEL MEMBERS**

NOT TO SCALE

BOLTED FIELD SPLICE DETAILS

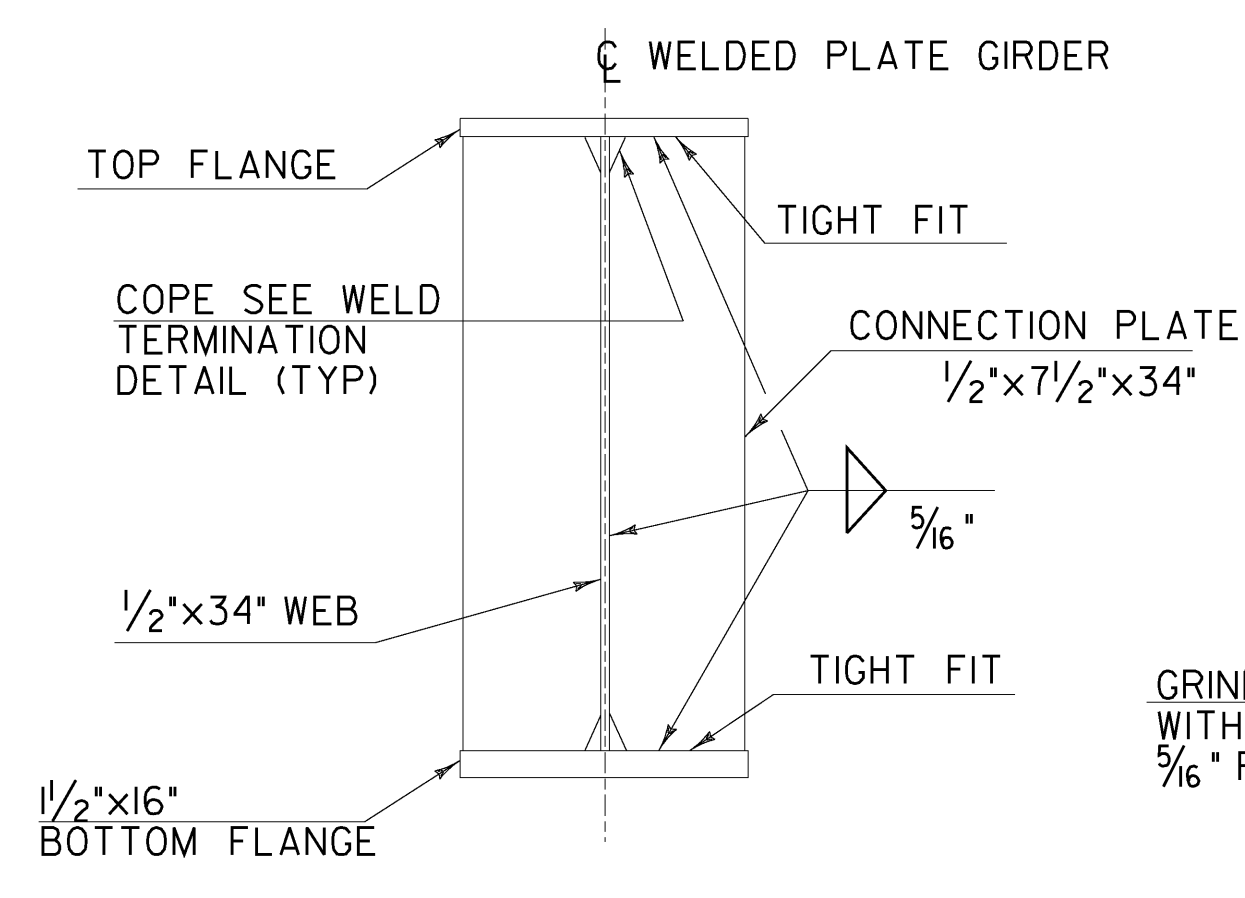


CAMBER DIAGRAM

DEAD LOAD DEFLECTION

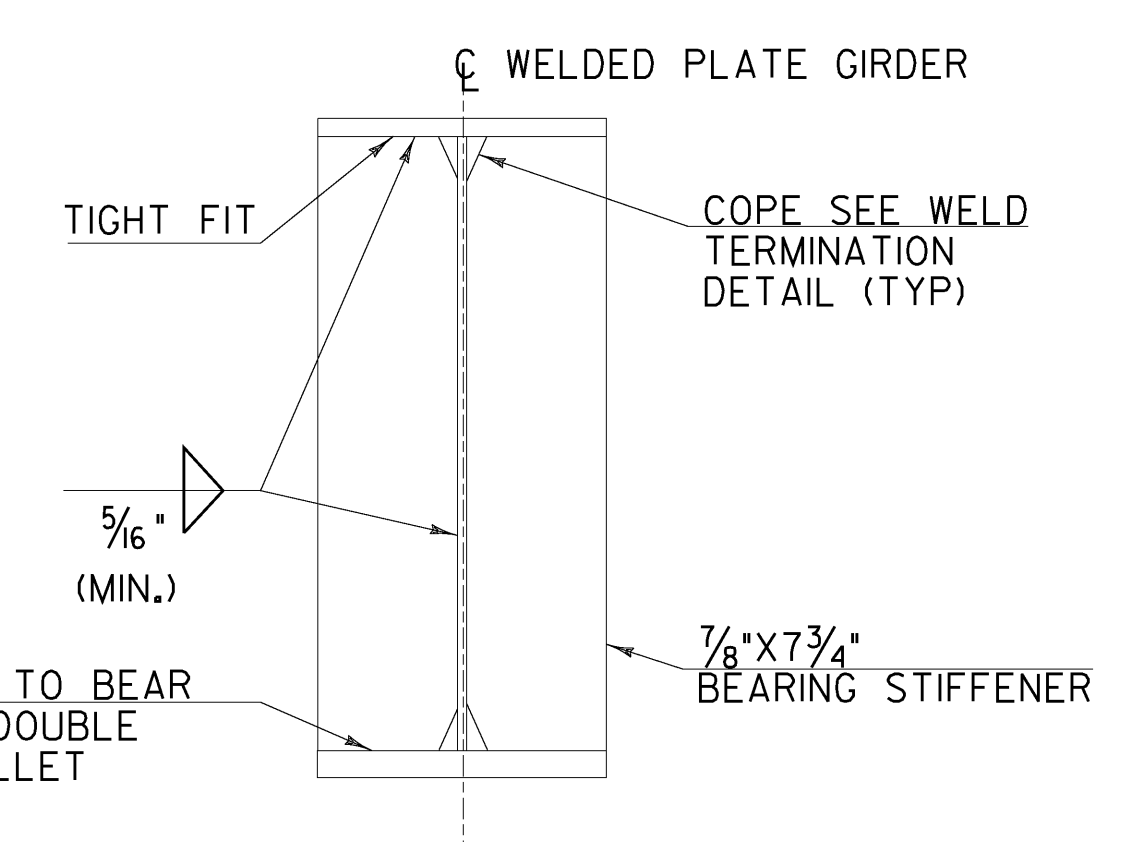
NOTES:

- CAMBER AND DEAD LOAD MEASUREMENTS ARE GIVEN IN INCHES AT SPAN TENTH POINTS.
- DEAD LOAD DEFLECTIONS SHOWN ARE FOR ALL DEAD LOADS AND SUPERIMPOSED DEAD LOADS INCLUDING GIRDER AND DIAPHRAGM WEIGHTS. DESIGN DEAD LOAD DEFLECTIONS SHOWN ARE BASED ON THE AVERAGE OF GIRDERS 1 THRU 5.
- CAMBER DIAGRAM INCLUDES RESIDUAL CAMBER, WHICH EXCEEDS THE VERTICAL CURVE CORRECTION. ADDITIONAL CORRECTION FOR VERTICAL CURVATURE IS NOT REQUIRED.



INTERMEDIATE CONNECTION PLATES

NOT TO SCALE



BEARING STIFFENERS

NOT TO SCALE

**STATE OF VERMONT
AGENCY OF TRANSPORTATION**

Town Of	PUTNEY	Bridge No.	19A
Highway No.	U.S. ROUTE 5	Log Sta.	
		Surv. Sta.	
U.S. ROUTE 5 OVER I-91			
GIRDER DETAILS 2			
Designed By	G. BOGUE	Drawn By	E. ALLING
Checked By	G. BOGUE	Date	06/09
		Bridge Design Supervisor	G. BOGUE Date 07/09
PROJECT	PUTNEY	PROJECT NO.	IM 091-(31)
CAD Drawing Name:	... \Plot Files\30 z932480.dwg 10/19/2009		
Bridge Sheet No.		Sheet	30 of 75

