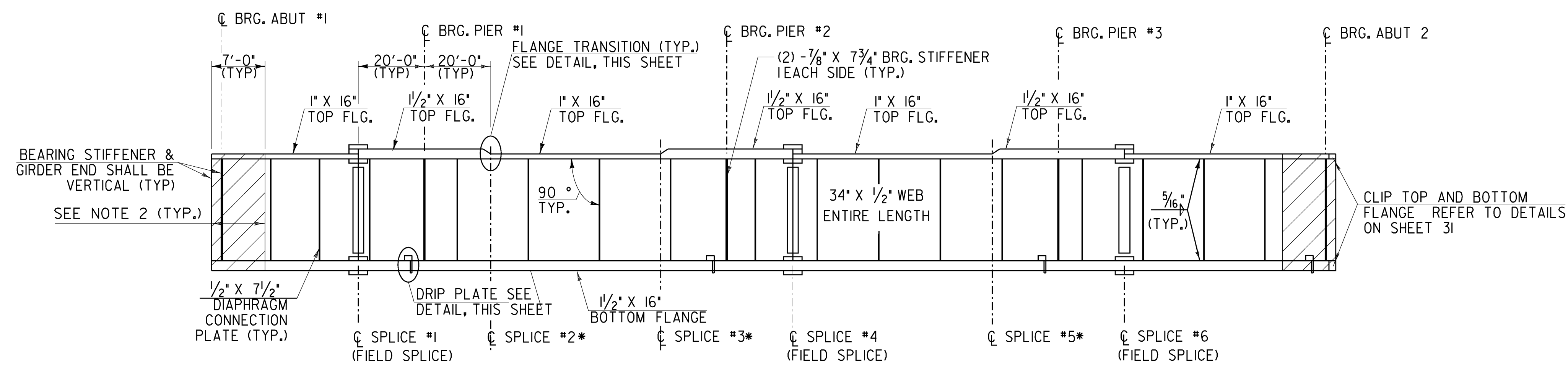


**FRAMING PLAN**

SCALE 3/32" = 1'-0"  
 10 4 8 12 16

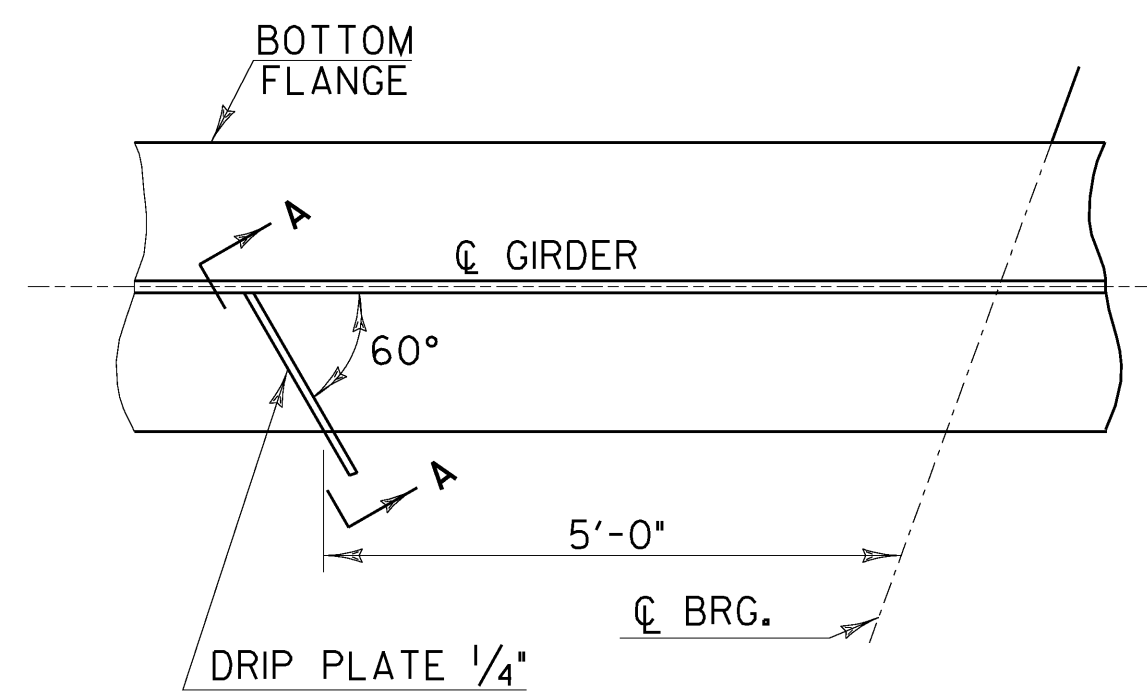
GIRDER NO.	ANGLE "A"	ANGLE "B"	ANGLE "C"	ANGLE "D"	ANGLE "E"
1	51° 31' 55"	48° 34' 01"	44° 09' 58"	39° 22' 53"	35° 34' 40"
2	51° 14' 07"	48° 14' 14"	43° 46' 52"	38° 55' 31"	35° 03' 13"
3	50° 56' 01"	47° 54' 05"	43° 23' 19"	38° 27' 31"	34° 30' 56"
4	50° 37' 35"	47° 33' 34"	42° 59' 16"	37° 58' 51"	33° 57' 46"
5	50° 18' 50"	47° 12' 40"	42° 34' 42"	37° 29' 29"	33° 23' 40"



**GIRDER PLATE SIZES**

NOT TO SCALE

\*OPTIONAL FIELD SPLICE, SEE NOTE 4

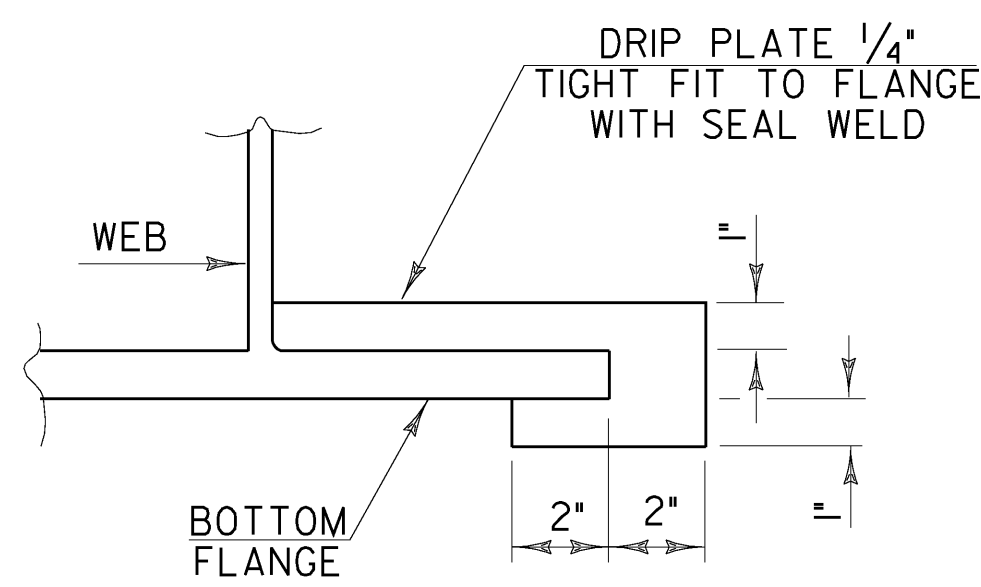


**PLAN**

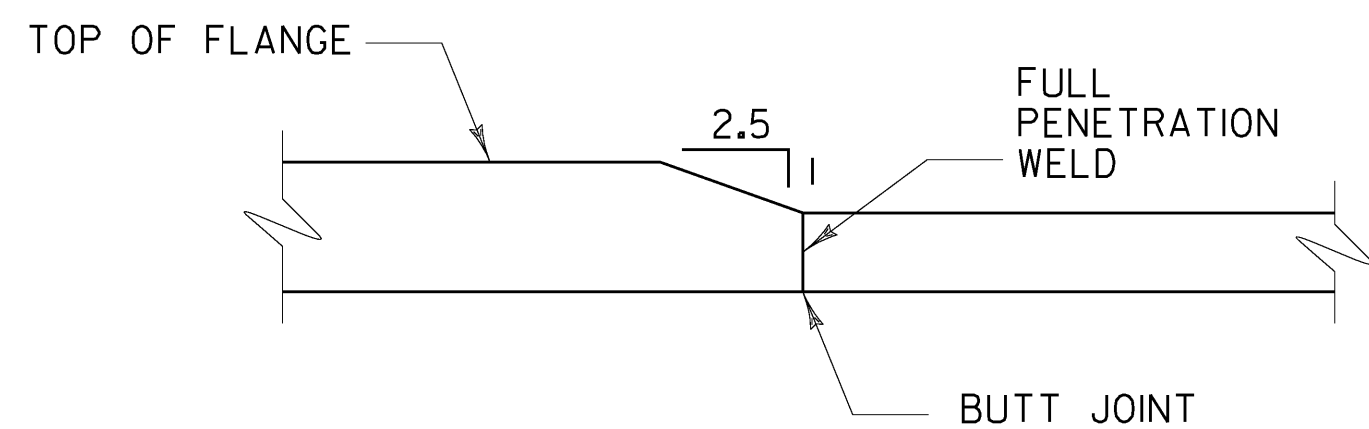
NOTE: DRIP PLATES SHALL BE PLACED ON OUTSIDE EDGE OF FASCIA GIRDERS ON THE HIGH SIDE OF ALL PIERS AND ABUTMENTS.

**DRIP PLATE DETAIL**

NOT TO SCALE



**SECTION A - A**



**FLANGE THICKNESS TRANSITION DETAIL**

NOT TO SCALE

**NOTES:**

- FOR DIAPHRAGM LAYOUT AND GIRDER DIMENSIONS REFER TO SHEET 29.
- ALL STRUCTURAL STEEL INCLUDING, GIRDERS, CROSS FRAMES, BEARING PLATES AND GUSSET PLATES WITHIN A DISTANCE OF 7 FEET FROM THE END OF THE GIRDERS WILL BE COATED WITH A PROTECTIVE PAINT SYSTEM AND GREASE RUSTPROOFING COMPOUND. THE FINAL PAINT COAT TO BE DARK BROWN, FEDERAL COLOR CHIP NO. 20059. THIS WORK SHALL BE PAID FOR UNDER ITEM 513.25, "STRUCTURAL PAINTING, SHOP APPLIED" AND 513.40, "SURFACE PREPARATION". SEE SECTION 513 OF THE STANDARD SPECIFICATIONS.
- FOR BOLTED FIELD SPLICE DETAILS, REFER TO SHEET 30. SPLICES #2, #3 AND #5 ARE OPTIONAL FIELD SPLICES. THE CONTRACTOR MAY ELECT TO PROVIDE A BOLTED FIELD SPLICE AT THESE LOCATIONS IN PLACE OF SPLICES #1, #4 AND #6. A MAXIMUM OF THREE FIELD SPLICES PER GIRDER WILL BE ALLOWED.
- FOR RANGES OF TENSION, REFER TO SHEET 29. ALL FLANGE AND WEB PLATES WITHIN THE RANGE OF TENSION SHALL BE CHARPY V NOTCH TESTED.
- ALL DIAPHRAGM MEMBERS SHALL BE CHARPY V NOTCH TESTED. FOR DIAPHRAGM DETAILS REFER TO SHEET 31.
- FOR CAMBER AND DEAD LOAD DEFLECTION DIAGRAM, SEE SHEET 30.
- THE ENDS OF GIRDERS AND BEARING STIFFENERS SHALL BE VERTICAL UNDER DEAD LOAD.

**STATE OF VERMONT  
 AGENCY OF TRANSPORTATION**

Town Of	PUTNEY	Bridge No.	19A
Highway No.	U.S. ROUTE 5	Log Sta.	
		Surv. Sta.	
U.S. ROUTE 5 OVER I-91			

FRAMING PLAN			
Designed By	G. BOGUE	Drawn By	T. KNIGHT
Checked By	Date	Bridge Design Supervisor	
G. BOGUE	06/09	G. BOGUE	Date 07/09
PROJECT	PUTNEY	PROJECT NO.	IM 091-(31)
CAD Drawing Name:	... \Plot Files\28 2938108\FB.dwg 10/19/2009		
Bridge Sheet No.		Sheet	28 of 75

