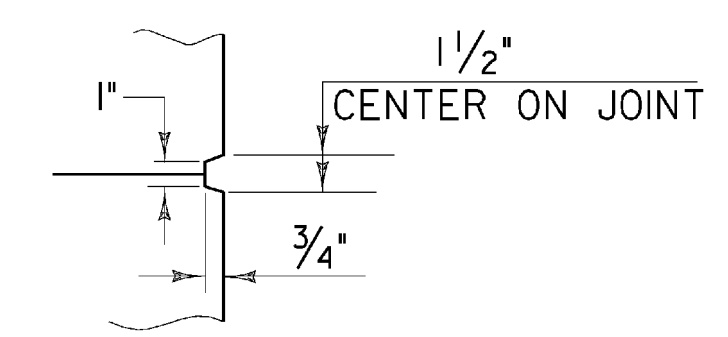
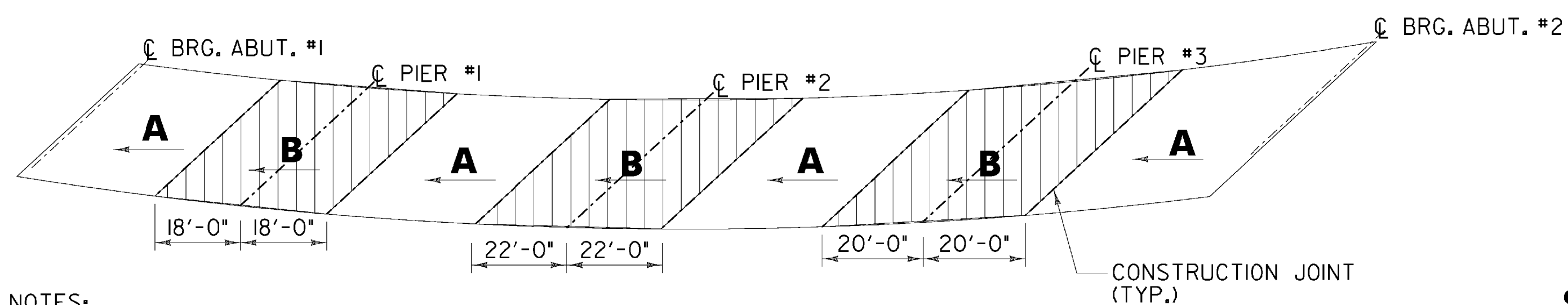


TYPICAL DECK REINFORCEMENT SECTION

SCALE 1/2" = 1'-0"



SCORE MARK DETAIL

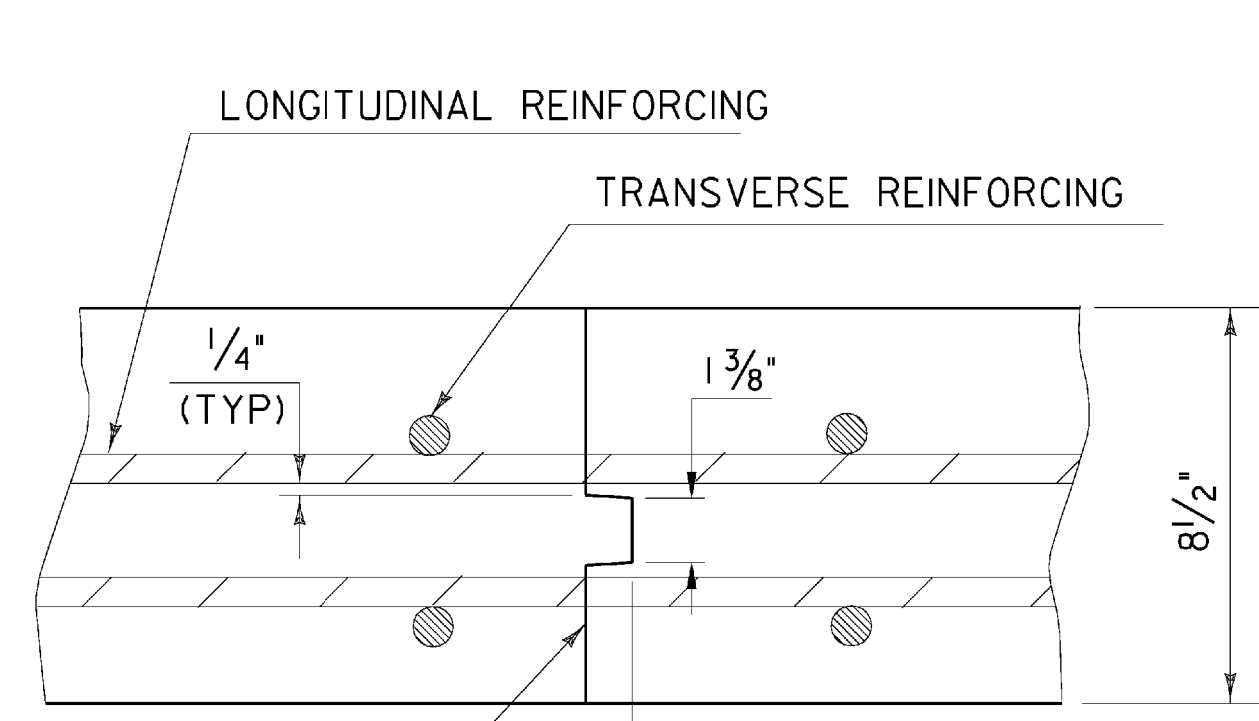
NOT TO SCALE

NOTES:

1. IT IS MANDATORY THAT THE DECK CONCRETE BE PLACED FIRST IN THE POSITIVE MOMENT REGIONS MARKED **A**. CONCRETE SHALL BE PLACED CONTINUOUSLY WITH THE CONCRETE REMAINING PLASTIC THROUGH OUT THE PLACEMENT.
2. ALL AREAS MARKED **A** SHALL BE PLACED DURING THE SAME WORK PERIOD.
3. THE CONCRETE SHALL BE DEPOSITED PARALLEL TO THE CENTERLINE OF BEARING SO AS TO LOAD THE GIRDERS EQUALLY, ARROWS INDICATE THE DIRECTION OF PLACEMENT.
4. TRANSVERSE BRIDGE SLAB CONSTRUCTION JOINTS, AS SHOWN ON THIS SHEET, SHALL BE USED BETWEEN ADJACENT DECK PLACEMENTS.
5. A NINETY-SIX (96) HOUR DELAY BETWEEN THE COMPLETION OF PLACEMENT **A** SHALL BE OBSERVED BEFORE PLACEMENT **B**.
6. THE CONTRACTOR MAY SUBMIT, IN WRITING, AN ALTERNATE PLACEMENT SEQUENCE TO THE ENGINEER FOR REVIEW AND APPROVAL.

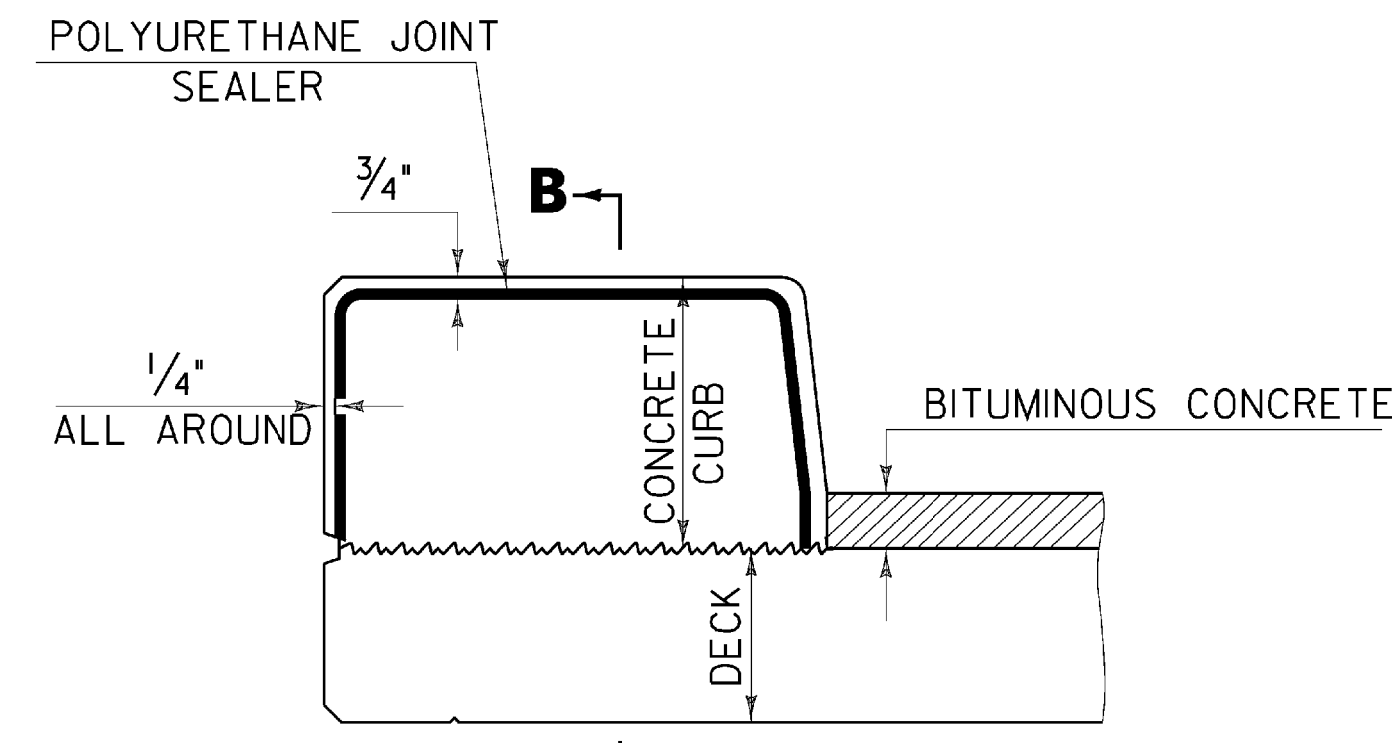
**DECK PLACED IN ONE POUR
DECK PLACEMENT SEQUENCE**

NOT TO SCALE



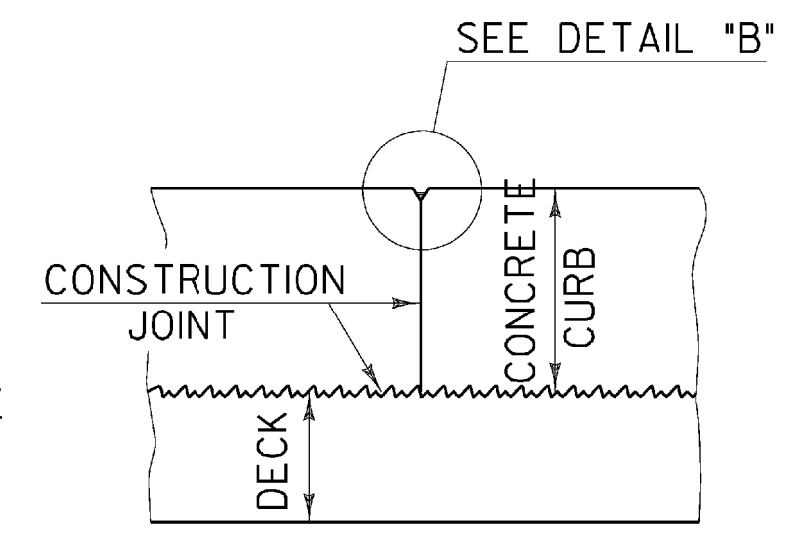
**TRANSVERSE BRIDGE SLAB
CONSTRUCTION JOINT DETAILS**

NOT TO SCALE



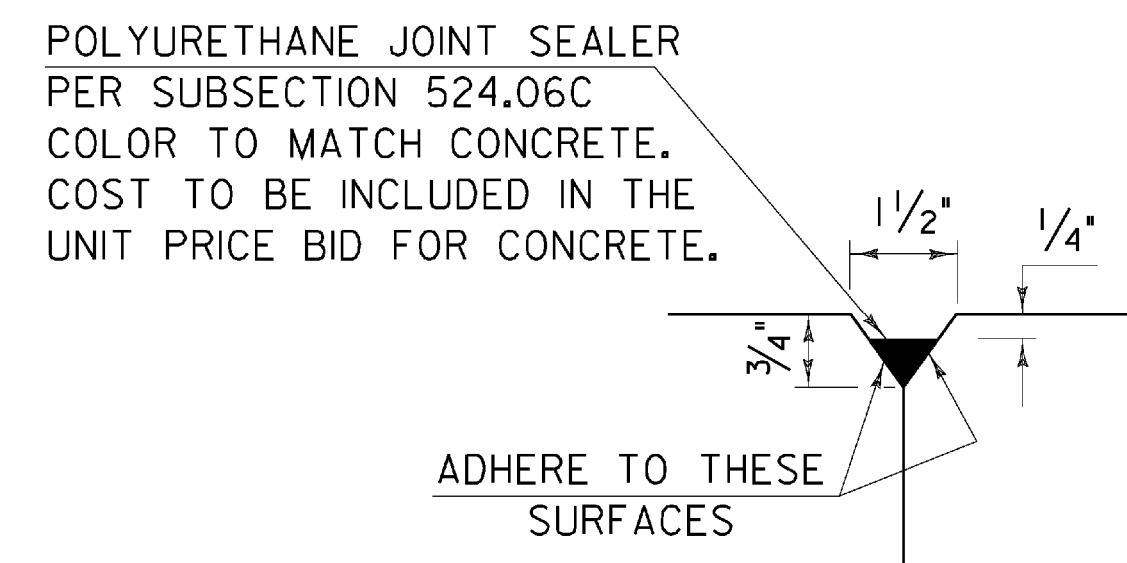
TYPICAL CURB JOINT

NOT TO SCALE



SECTION B - B

NOT TO SCALE

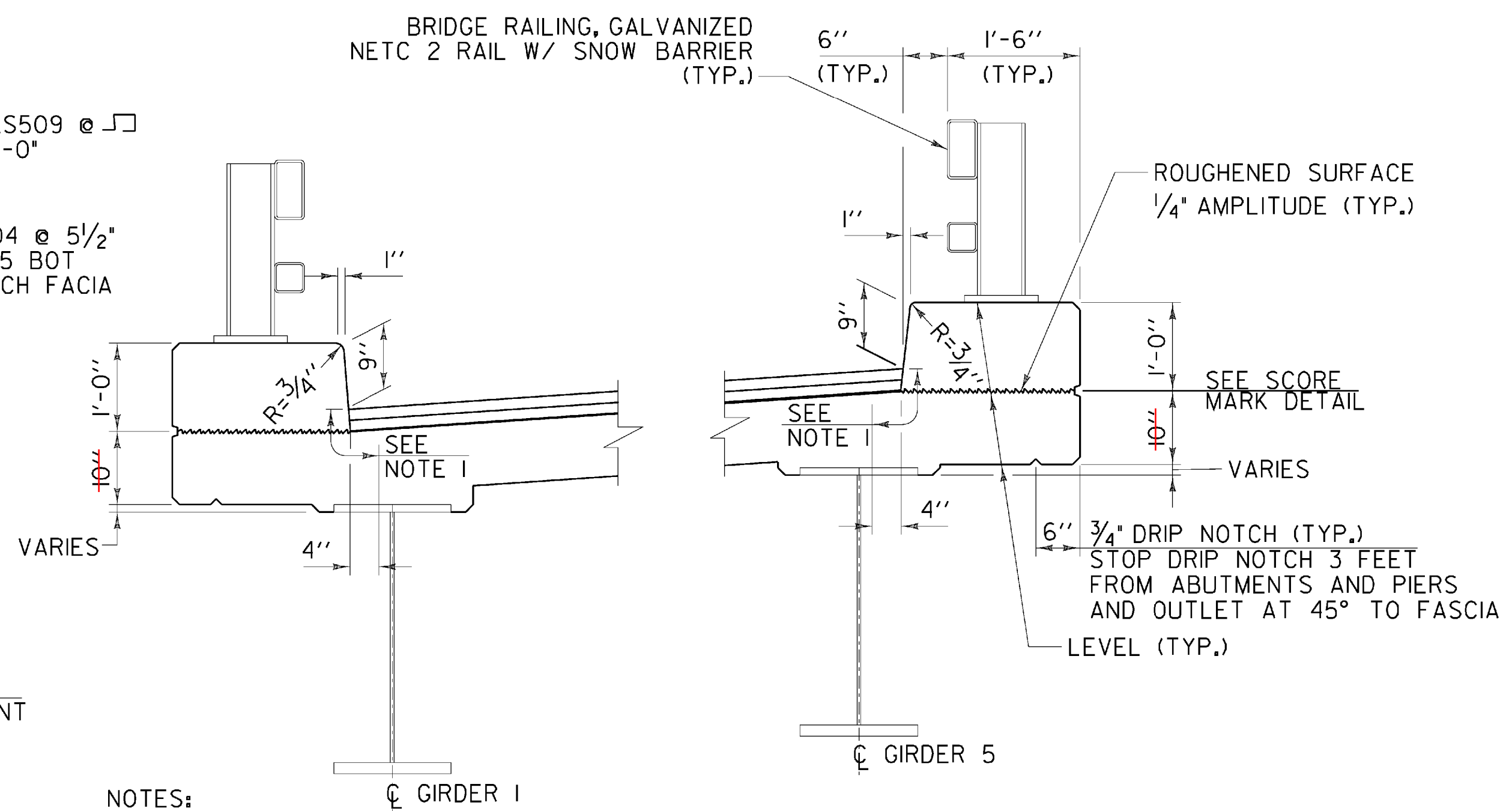


DETAIL "B"

NOT TO SCALE

NOTES:

1. CONSTRUCTION JOINTS THROUGH CONCRETE CURBS SHALL BE SPACED MAXIMUM 15'-0" CENTER TO CENTER AND SHALL BE 1'-6" MINIMUM FROM THE CENTER OF THE NEAREST BRIDGE RAIL POST. CONCRETE SHALL BE PLACED IN ALTERNATING SECTIONS WITH A MINIMUM OF 48 HOURS DELAY BETWEEN ADJACENT POURS.
2. LONGITUDINAL REINFORCING SHALL PASS THROUGH CONCRETE CURB CONSTRUCTION JOINTS.
3. THE CURB POUR SEQUENCE SHALL FOLLOW THE ORDER OF THE DECK POUR SEQUENCE. THE ENTIRE DECK SHALL BE POURED PRIOR TO THE CURB.



TYPICAL CURB SECTION

SCALE 3/4" = 1'-0"

NOTES:

1. INDICATES AREA ALONG THE DECK AND UP THE FACE OF THE CURB FOR PLACEMENT OF 2 COATS OF POLYURETHANE MEMBRANE.
2. POLYURETHANE MEMBRANE AND BLAST CLEANING SHALL BE INCLUDED IN THE UNIT PRICE BID FOR SHEET MEMBRANE WATERPROOFING, TORCH APPLIED.
3. SHEET MEMBRANE WATERPROOFING, TORCH APPLIED SHALL EXTEND TO THE FACE OF THE CURB AS SHOWN.
4. BLAST CLEAN 3 FEET FROM THE FACE OF THE CURB AND 3 INCHES UP THE CURB FACE PRIOR TO PLACING MEMBRANE.
5. ALL CONCRETE IN THE CURB SHALL BE ITEM 900.608 SPECIAL PROVISION (HIGH PERFORMANCE CONCRETE, CLASS A LOW CEMENT).



STATE OF VERMONT AGENCY OF TRANSPORTATION			
Town Of	PUTNEY	Bridge No.	19A
Highway No.	U.S. ROUTE 5	Log Sta.	
		Surv. Sta.	
U.S. ROUTE 5 OVER I-91			
DECK REINFORCEMENT SECTION			
Designed By	T. KNIGHT	Drawn By	E. ALLING
Checked By	Date	Bridge Design Supervisor	
T. KNIGHT	06/09	G. BOGUE	Date 06/09
PROJECT	PUTNEY	PROJECT NO.	IM 091-(31)
CAD Drawing Name:	... \27 z93a148rel.dd.plt	Date:	10/19/2009
Bridge Sheet No.		Sheet	27 of 75