

GPS CONTROL POINTS

HVCTRL #1

STANDARD DISK STAMPED
Duno AZ MK

N = 184590.543
E = 1648708.176
ELEV. = 553.05

To reach from the intersection of Interstate I-91 north and Exit 4 ramp in Putney, go north along I-91 for 4.5 MI to the site of the mark on the left. The mark is set flush in the northeast corner of a 1.2 M x 1.8 M concrete pad for a drop inlet. The mark is 0.05 MI south of the US Route 5 bridge over the interstate. The mark is located 5.8 M west of the west edge of pavement of I-91 north bound lane, 7.1 M east of the east edge of pavement of I-91 south bound lane, 1.0 M north of the south edge of the concrete DI, 0.2 M south of the north edge of the concrete DI, and 0.3 M west of a fiberglass witness post.

HVCTRL #2

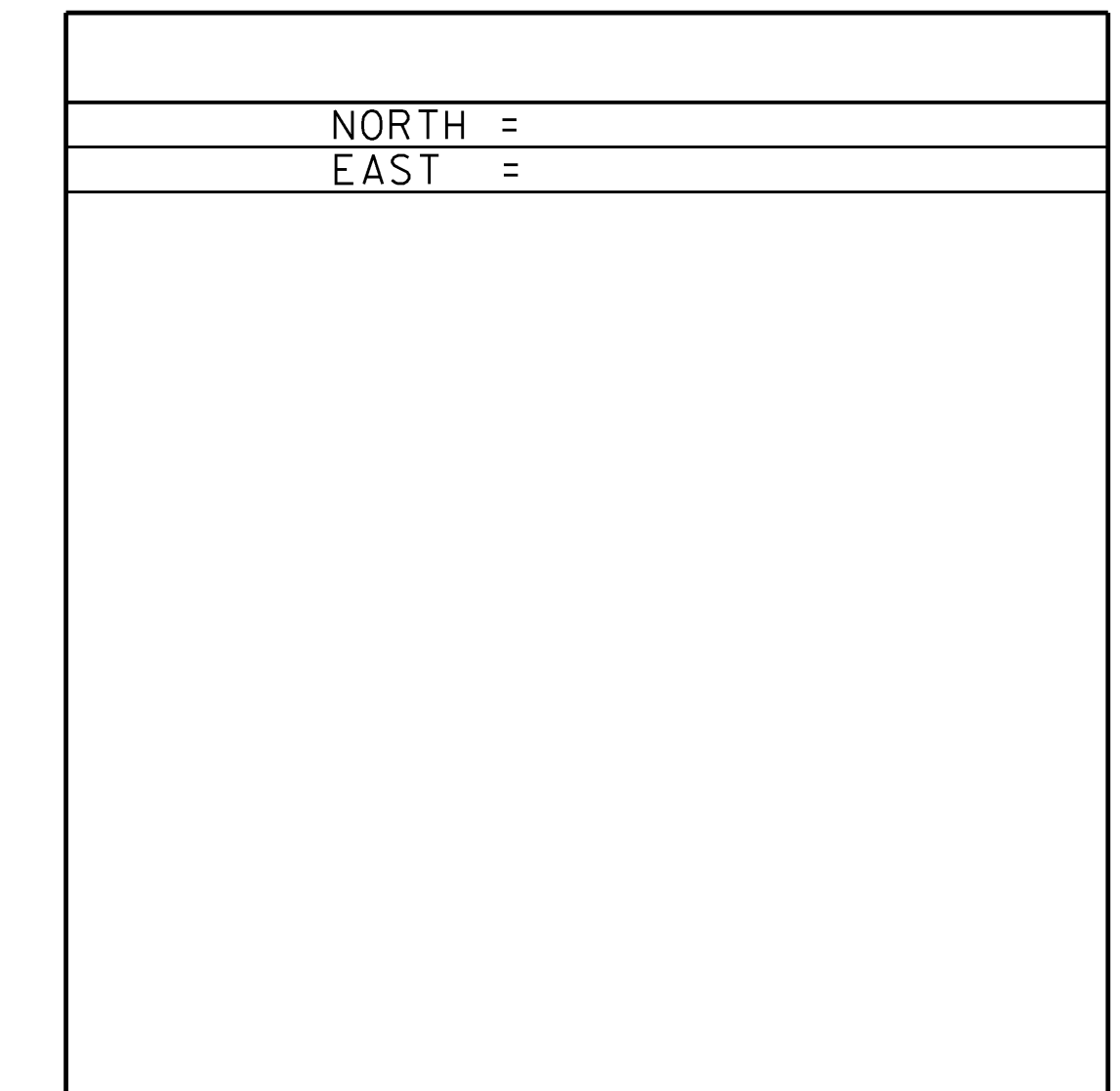
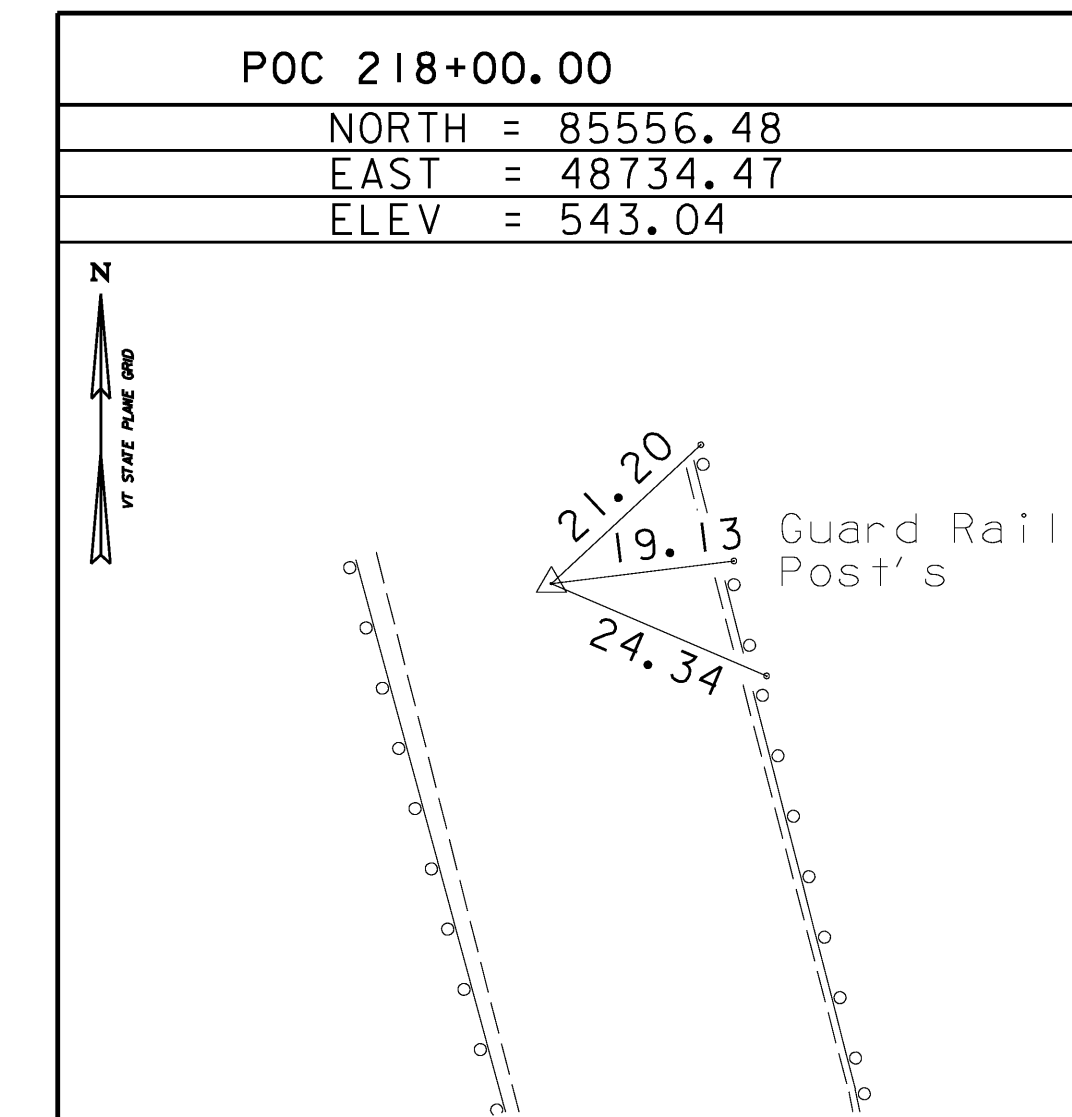
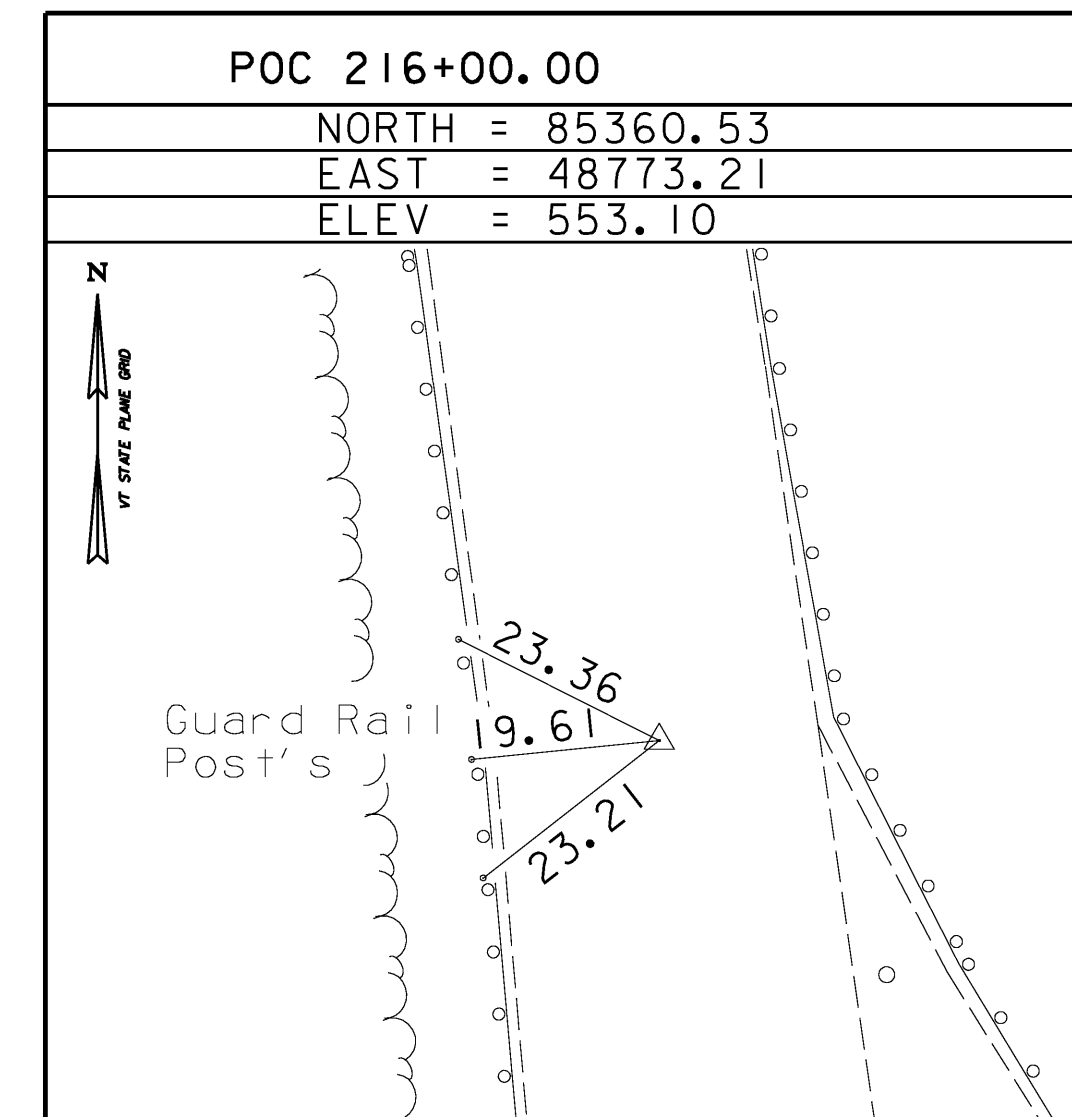
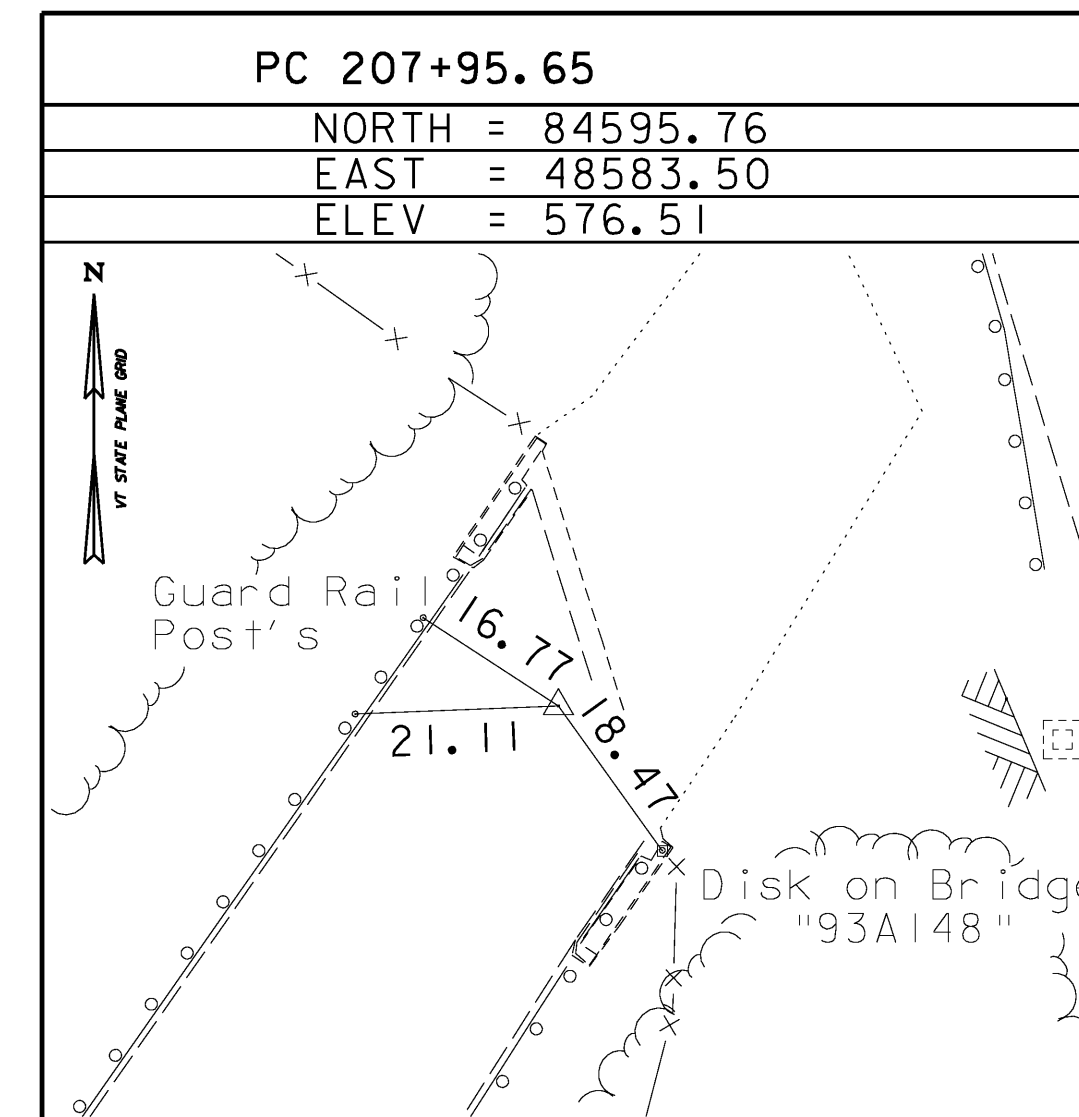
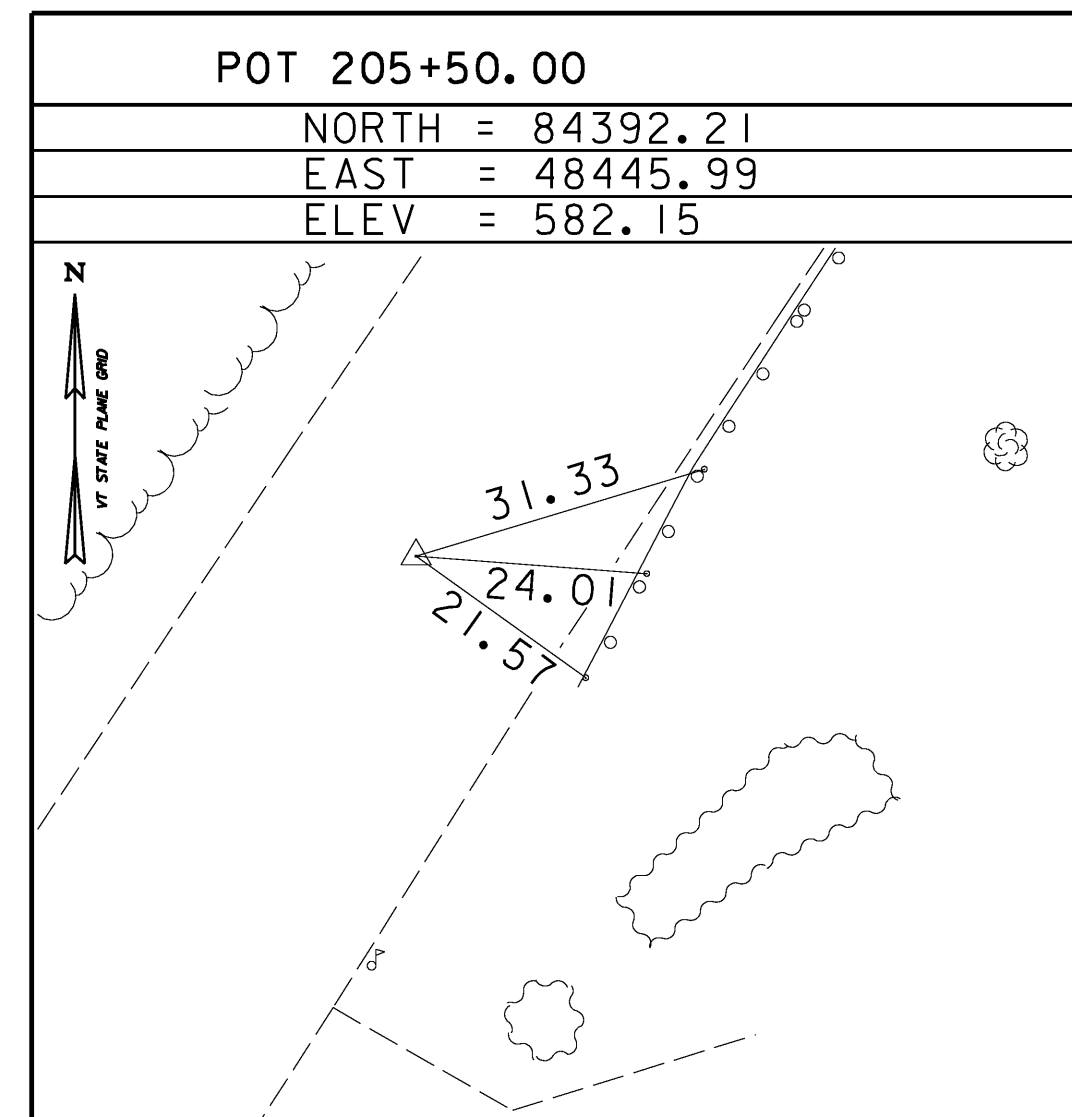
STANDARD DISK STAMPED
Duno

N = 186132.423
E = 1648229.810
ELEV. = 547.64

To reach from the intersection of Interstate I-91 north and Exit 4 ramp in Putney, go north along I-91 for 4.8 MI to the site of the mark on the left. The mark is set flush in the northeast corner of a 1.2m x 1.2m concrete pad for a drop inlet. The mark is 0.25 MI north of the US Route 5 bridge over the interstate. The mark is located 5.8 M west of and about 1m lower than the west edge of pavement of I-91 north bound lane, 7.0m east of and about 1m lower than the east edge of pavement of I-91 south bound lane, 1.1m north of the south edge of the concrete DI, 0.15m south of the north edge of the concrete DI, and 0.7m west of a fiberglass witness post.

- * NO Traverse was run: GPS control in project area 09/02/00 R. Gilman P.C. & R. Bullock
- DESCRIPTION PROVIDED BY VERMONT AGENCY OF TRANSPORTATION GEODETIC SURVEY UNIT
- TO ALLOW THE STATE PLANE COORDINATES TO FIT THE AGENCY DESIGN PLANE, SUBTRACT 100,000 FROM THE NORTHING AND SUBTRACT 1,600,000 FROM THE EASTING

ALIGNMENT TIES



• ALIGNMENT STAKED 09/29/2003 by R. Gilman P.C. & P. Winters

ALIGNMENT COORDINATES

	NORTHING	EASTING
MAINLINE POB STA. 205+00.00	84350.11	48418.00
MAINLINE PC STA. 207+95.65	84595.76	48583.50
MAINLINE PT STA. 219+68.11	85713.93	48676.00
MAINLINE POE STA. 220+00.04	85742.30	48662.72

	NORTHING	EASTING
DETOUR POB STA. 400+00.00	84098.06	48276.23
DETOUR PT STA. 400+88.82	84184.12	48299.05
DETOUR PC STA. 405+12.42	84605.99	48337.26
DETOUR PT STA. 407+26.99	84788.70	48437.78
DETOUR PC STA. 410+27.81	84971.99	48676.31
DETOUR PT STA. 412+48.52	85160.82	48777.31

	NORTHING	EASTING
TAYLOR ROAD POB STA. 600+00.00	84734.94	48386.04
TAYLOR ROAD PC STA. 600+20.73	84747.81	48369.29
TAYLOR ROAD PT STA. 600+70.46	84790.89	48348.79
TAYLOR ROAD POE STA. 601+98.31	84917.90	48355.60

	NORTHING	EASTING
I-91 POB STA. 1198+00.00	84516.22	48728.05
I-91 POE STA. 1203+00.00	84994.01	48580.70

DATUM
VERTICAL <u>NAVD 88</u>
HORIZONTAL <u>NAD 83 (96)</u>
ADJUSTMENT <u>none</u>

NOTES:
1. ELEVATIONS GIVEN FOR THE ALIGNMENT COORDINATES REFLECT EXISTING CONDITIONS SURVEYED ON SEPTEMBER 2000.

PROJECT NAME: PUTNEY
PROJECT NUMBER: IM 091-(31)
FILE NAME: ...Plot Files\08 z93a148tie.ptf PLOT DATE: 10/19/2009
PROJECT LEADER: G. BOGUE DRAWN BY: R. BULLOCK
DESIGNED BY: CHECKED BY: G. GOYETTE
TIE SHEET SHEET 8A OF 75

