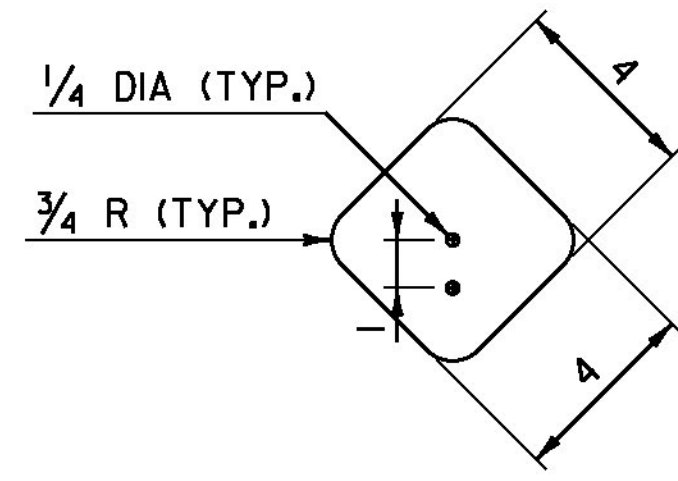
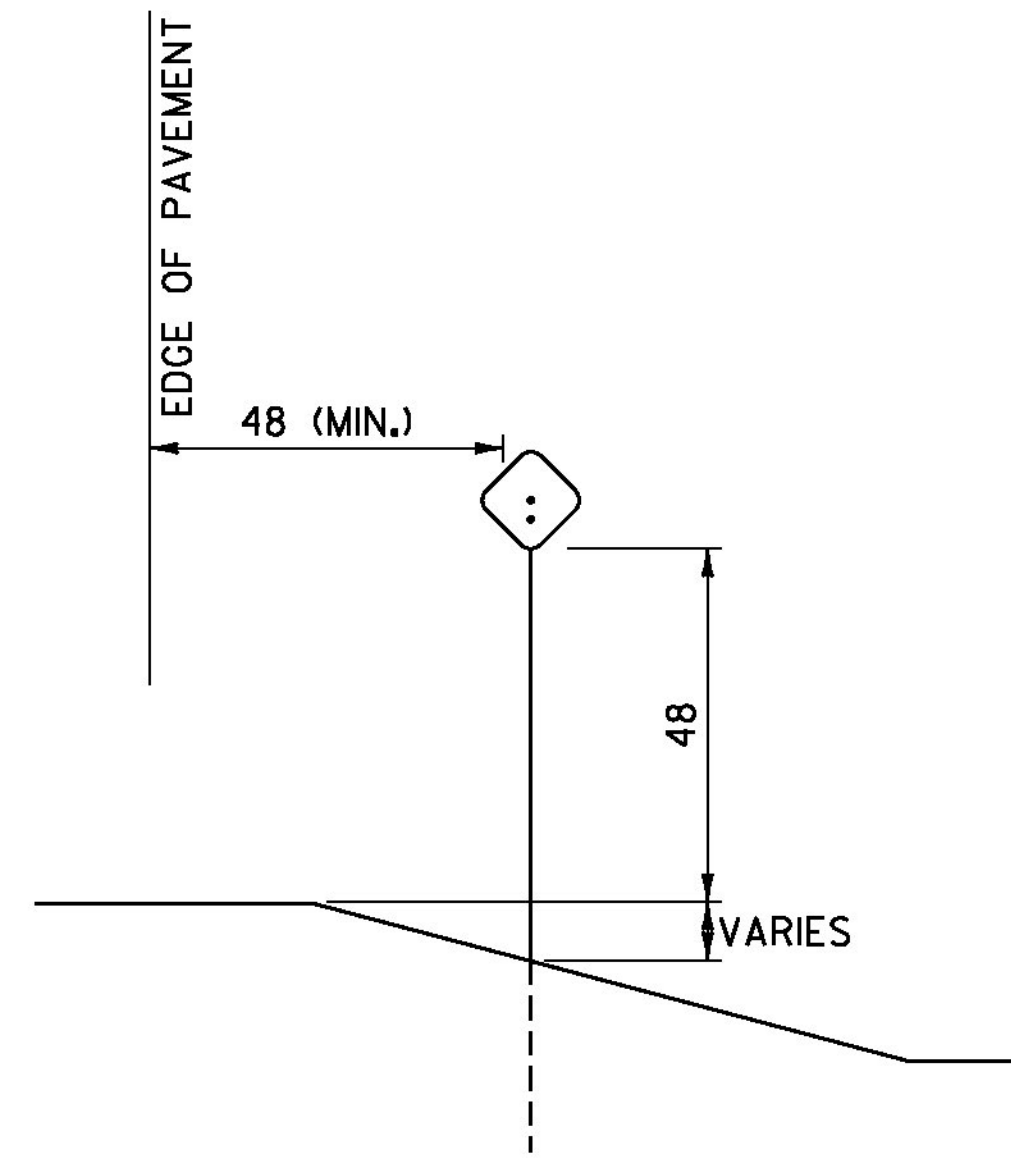


**TYPE I**



**TYPE I DELINEATOR**



**INSTALLATION DETAIL**

**GENERAL NOTES:**

1. THE INTERSTATE MILEPOST PLAQUE AND DELINEATOR BASE MATERIAL SHALL BE 0.063 INCH FLAT SHEET ALUMINUM.  
  
CORNERS SHALL BE ROUNDED TO A 1/2 INCH RADIUS UNLESS OTHERWISE NOTED.
2. A TYPE III DELINEATOR CONSISTS OF A TYPE I DELINEATOR FACING THE NORMAL DIRECTION OF TRAVEL AND A SINGLE RED TYPE I DELINEATOR FACING THE OPPOSITE DIRECTION. THE WHITE DELINEATOR AND RED DELINEATOR COMBINATION IS PLACED ON THE DRIVER'S RIGHT AND THE AMBER DELINEATOR AND RED DELINEATOR COMBINATION ON THE DRIVER'S LEFT.
3. DELINEATORS SHALL HAVE WHITE RETROREFLECTIVE SHEETING EQUAL TO OR EXCEEDING ASTM D4956 TYPE III, OR RED OR YELLOW RETROREFLECTIVE SHEETING EQUAL TO OR EXCEEDING ASTM D 4956 TYPE VII, VIII, OR IX.  
  
A SINGLE 14 GAGE, 1.75 INCH SQUARE STEEL POST AND 12 GAGE, TWO INCH SQUARE ANCHOR SHALL BE USED FOR INSTALLATION. THE ANCHOR SHALL BE A MINIMUM OF 30 INCHES IN LENGTH.
4. THE TOP OF POST SHALL BE ONE INCH ABOVE THE UPPER HOLE FOR ALL TYPE I DELINEATORS.
5. ALL DIMENSIONS SHOWN IN INCHES.

PROJECT NAME: GUILFORD	
PROJECT NUMBER: IM-IR 091-1(25)	
FILE NAME: D9IA222_TRF.dgn	PLOT DATE: 22-JUL-2013
PROJECT LEADER: LIBBY	DRAWN BY: BEYOR
DESIGNED BY: BEYOR	CHECKED BY: BOMBARDIER
DELINATOR SHEET 2	SHEET 46 OF 46