

GPS CONTROL POINTS

HVCTRL #1

Standard Disk Stamped
 186UU
 NORTH = 82371.649
 EAST = 1621689.036
 ELEV. = 451.239

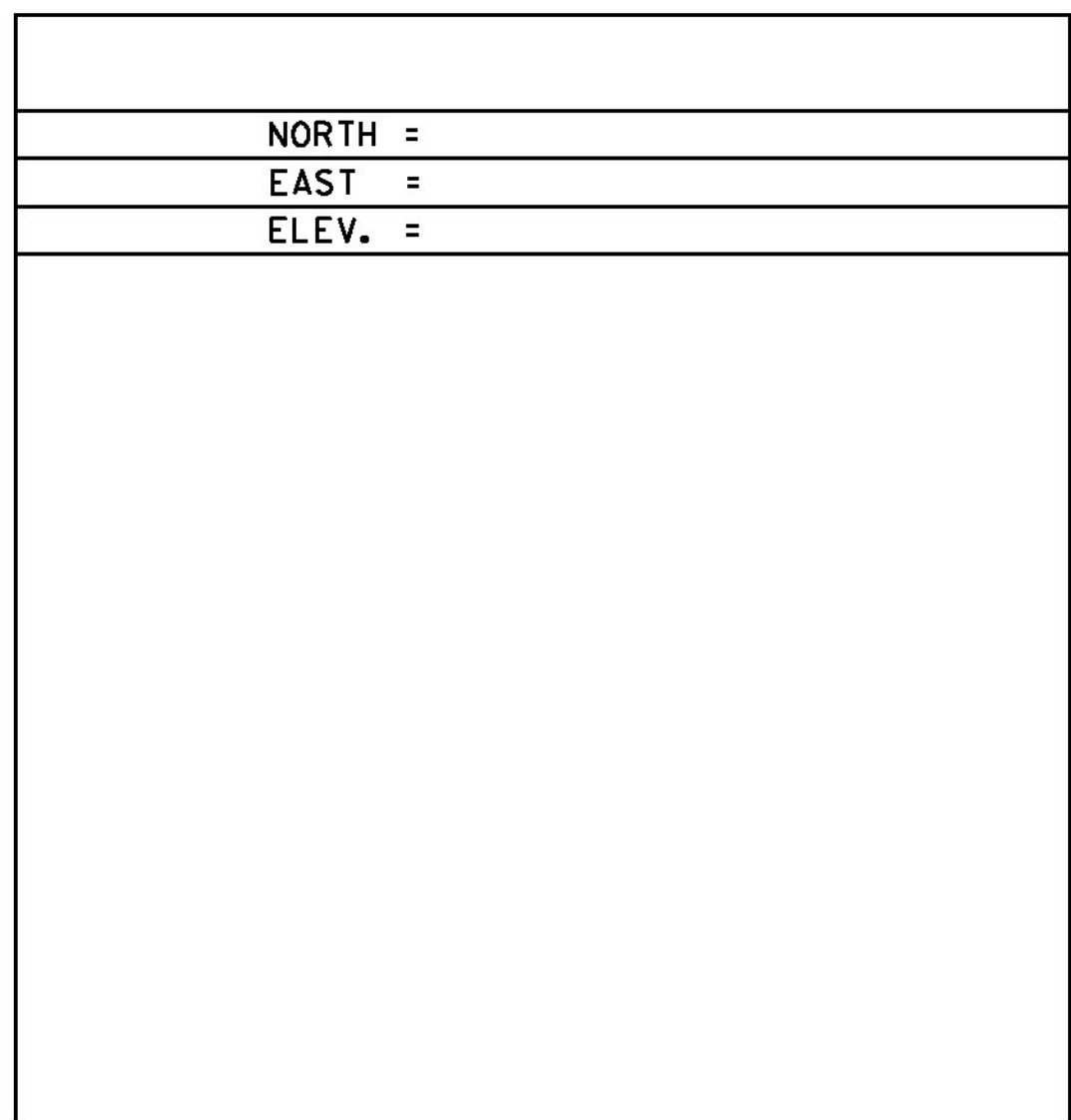
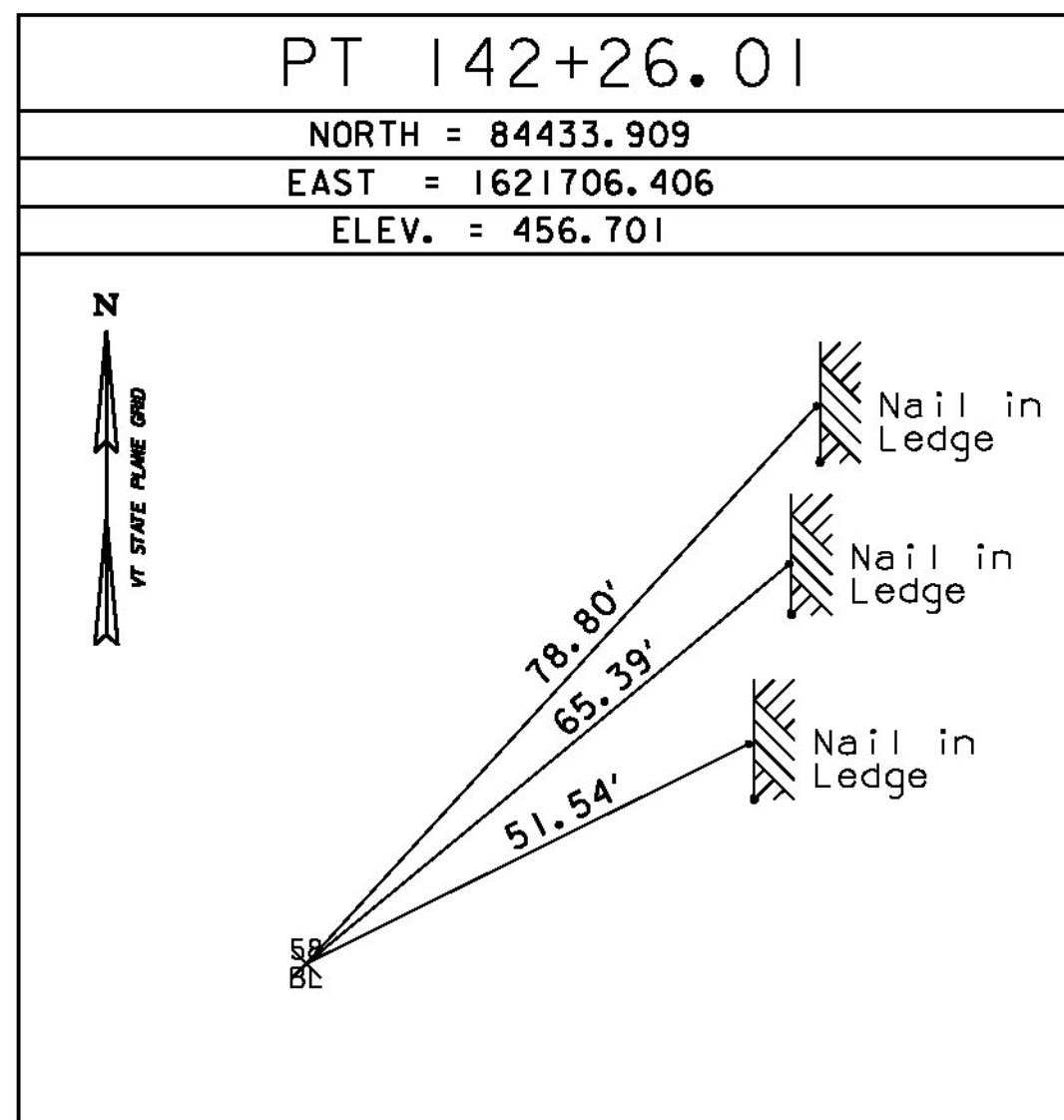
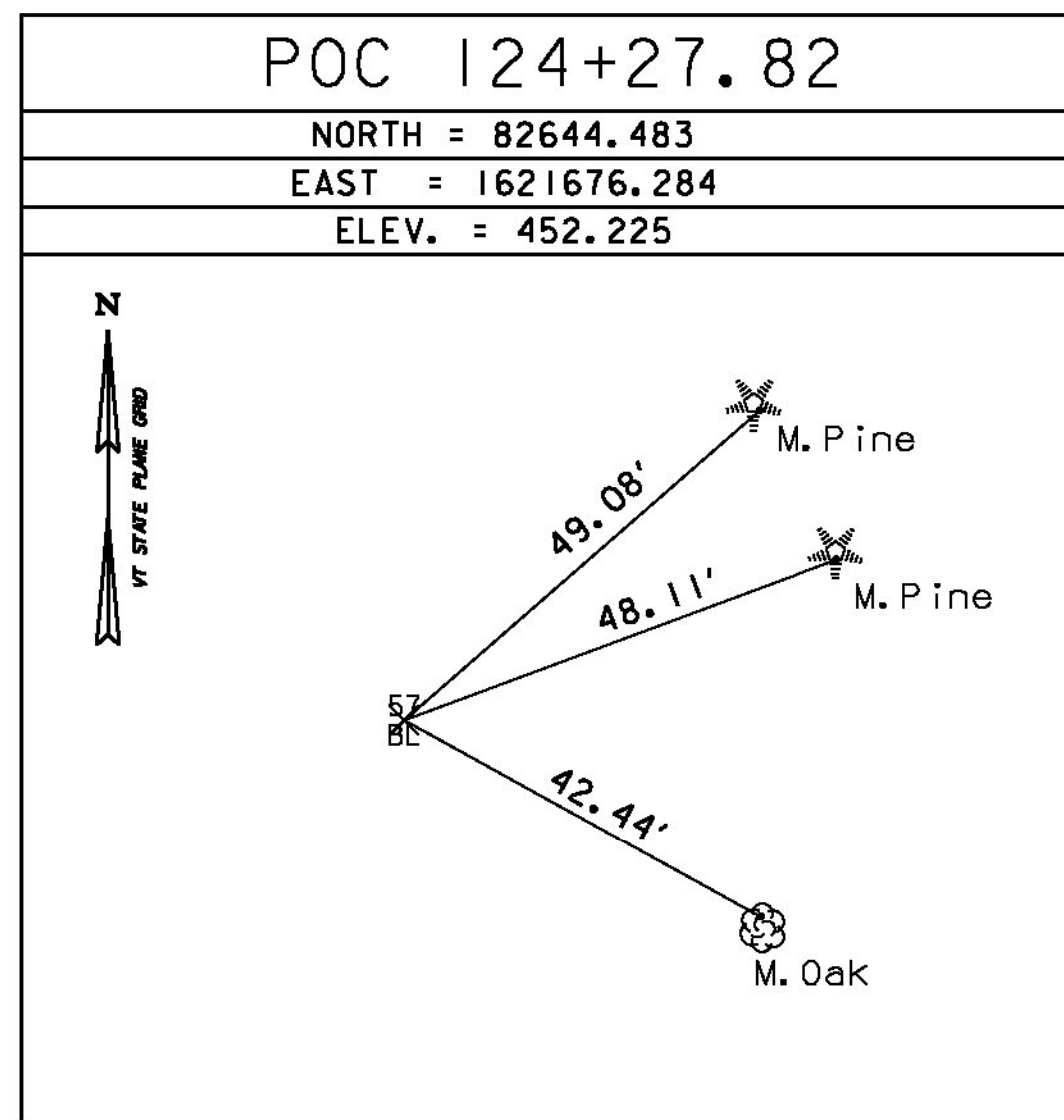
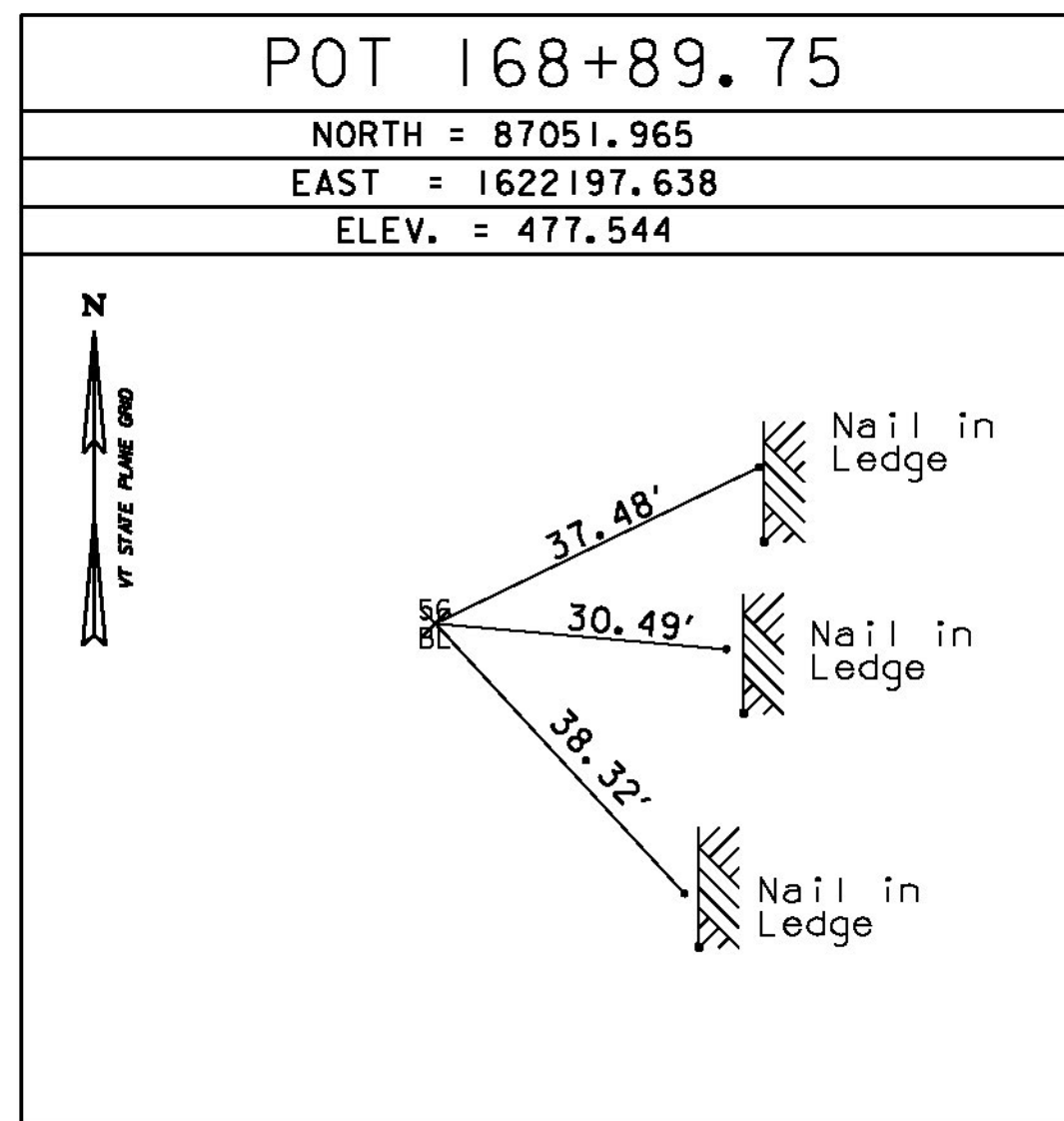
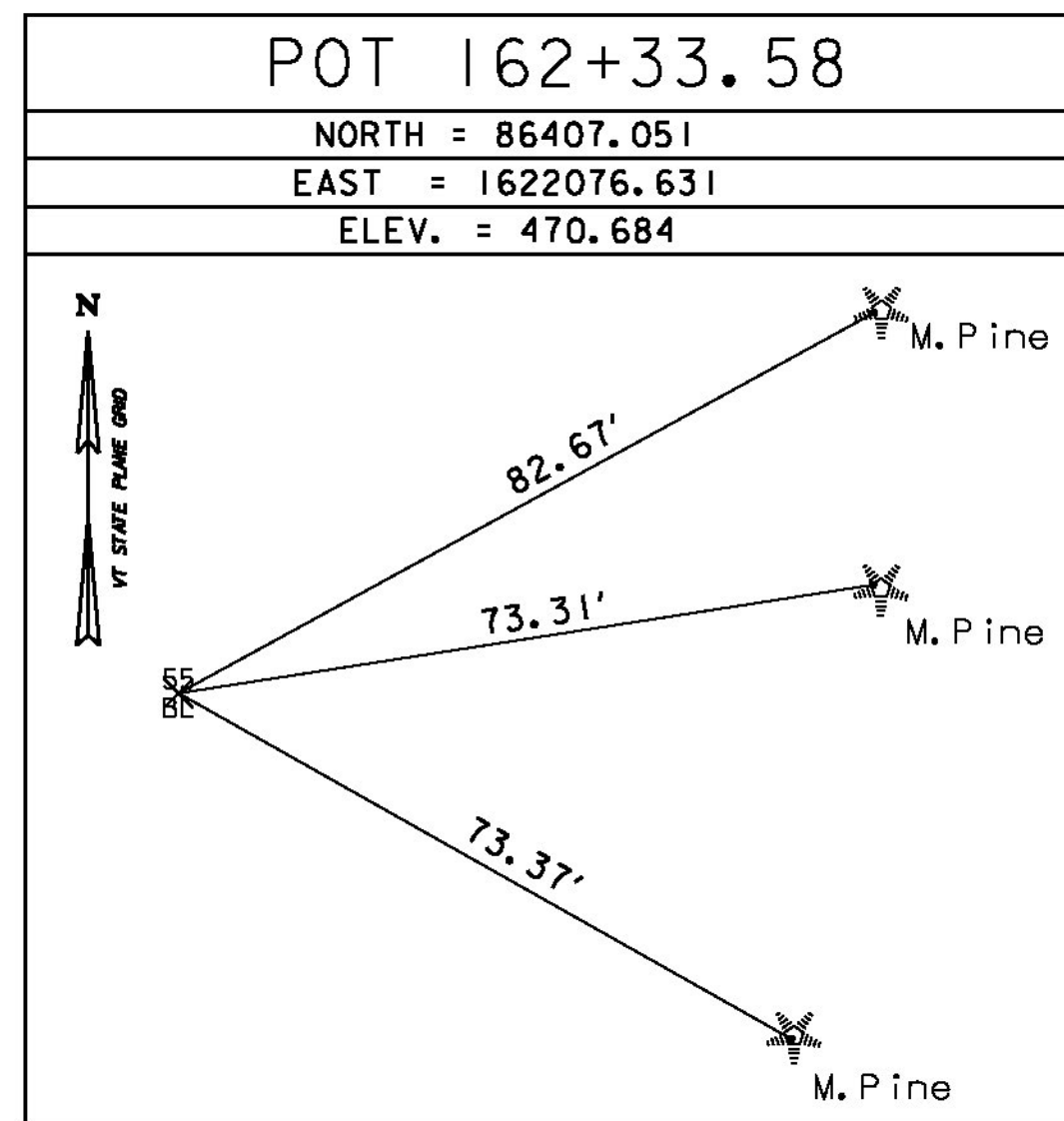
TO REACH THE STATION FROM THE INTERSECTION OF INTERSTATE HIGHWAY 91 AND STATE ROUTE 10, INTERCHANGE 28 IN BERNARDSTON, GO NORTH ON I-91 ABOUT 7.0 KM (4.35 MI) TO THE STATION ON THE LEFT IN THE MEDIAN. THE STATION IS A MAGS DISK STAMPED---186 UU---, AND SET IN A SQUARE CONCRETE MONUMENT 13 CM ON A SIDE FLUSH WITH THE GROUND. IT IS 11.7 METERS (38.5 FT) SOUTHEAST OF THE BELL END OF AN 18-INCH RE-ENFORCED CONCRETE PIPE AND 0.7 METER (2.2 FT) SOUTHEAST OF A CARSONITE WITNESS POST AND 7.0 METERS (23.0 FT) WEST OF THE CENTERLINE OF THE NORTHBOUND TRAVEL LANE OF I-91.

HVCTRL #2

Standard Disk Stamped
 186VV
 NORTH = 83858.651
 EAST = 1621578.974
 ELEV. = 451.869

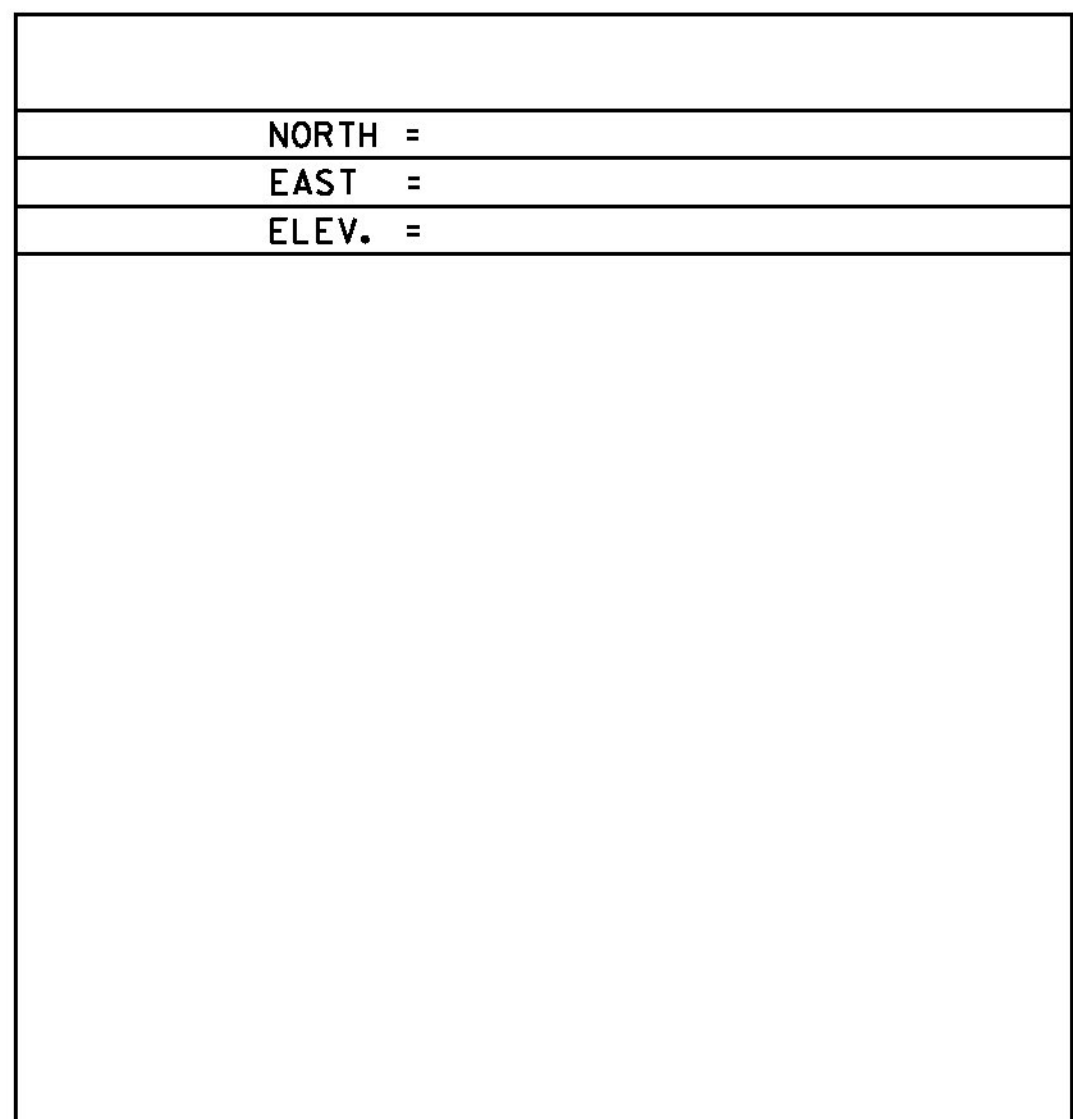
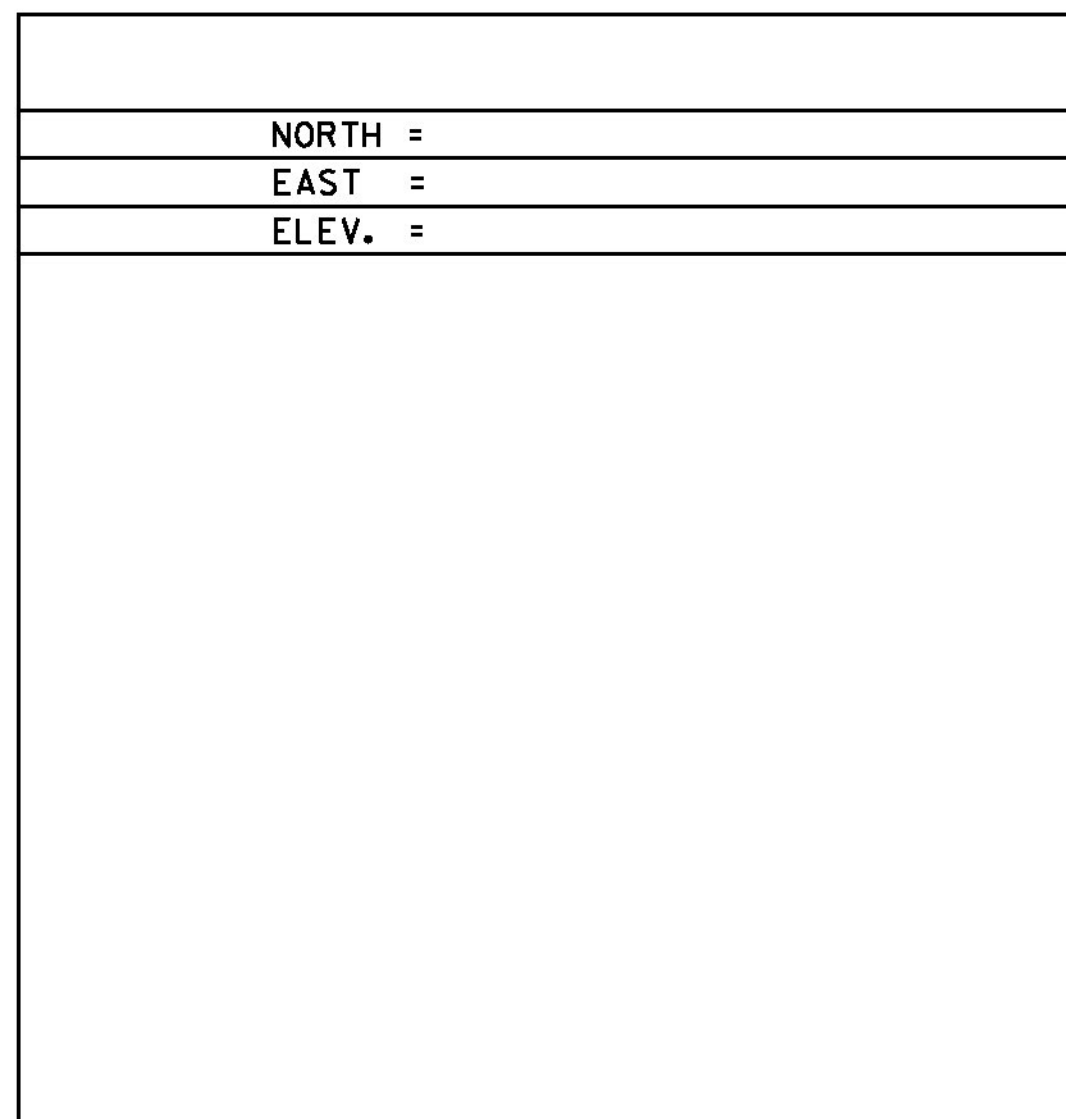
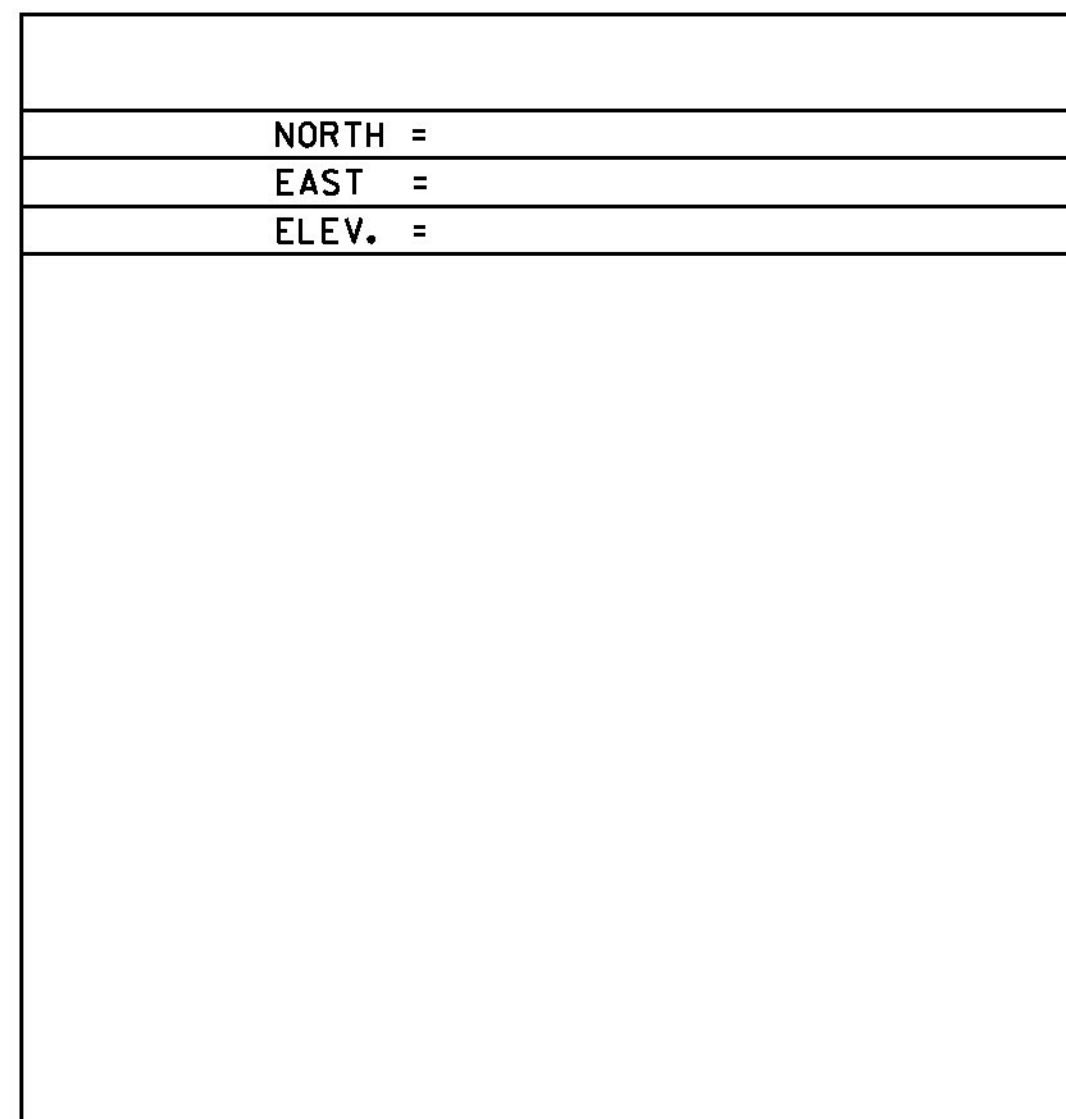
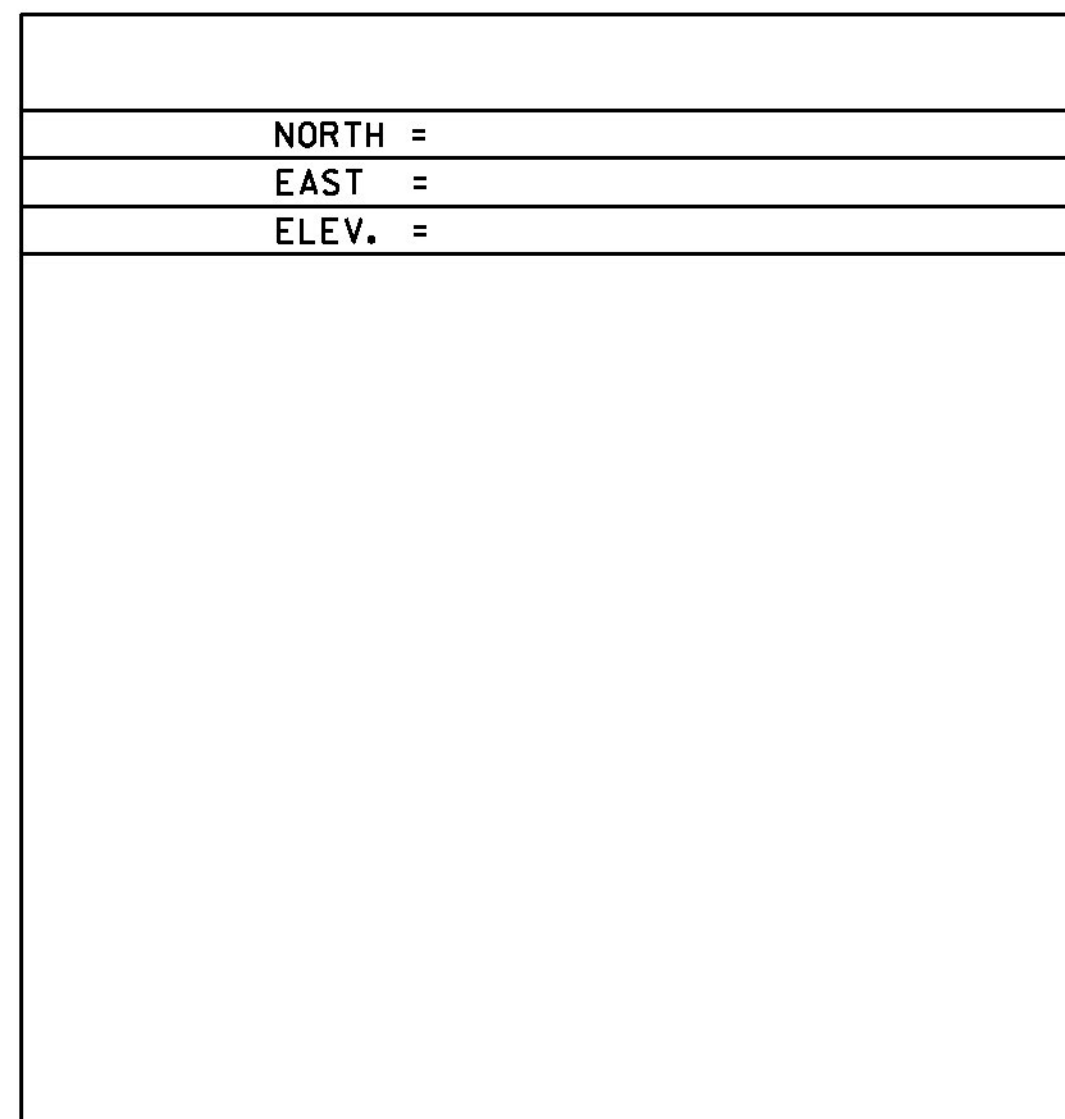
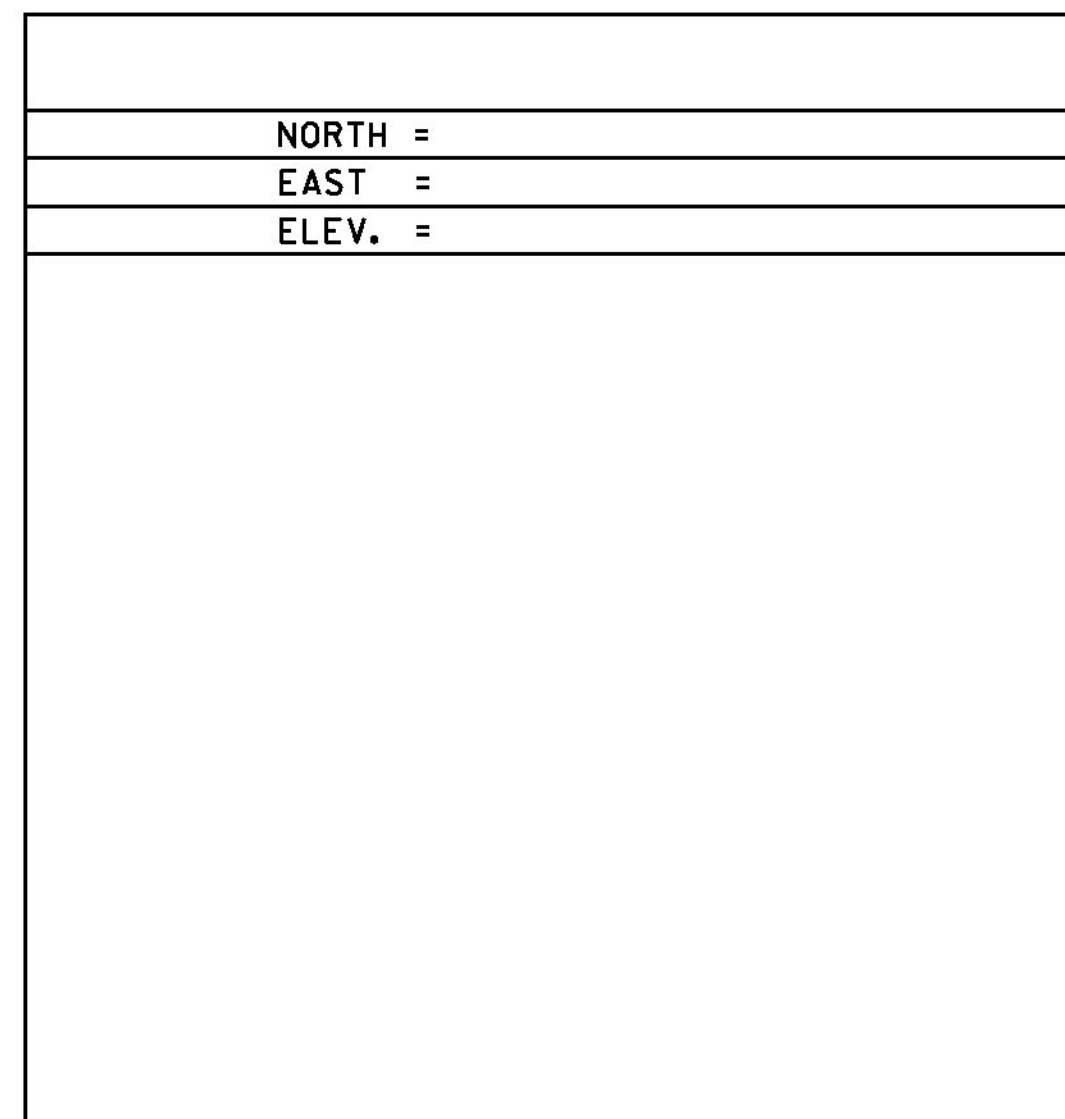
THE STATION IS LOCATED ABOUT 9.6 KM (5.95 MI) SOUTH OF GUILFORD, VT, 6.4 KM (4.00 MI) NORTH OF BERNARDSTON, ON THE VERMONT STATE LINE, IN THE CENTER OF THE GRASS MEDIAN OF BETWEEN THE NORTH AND SOUTH BOUND LANES OF INTERSTATE HIGHWAY 91. OWNERSHIP--DEPARTMENTS OF TRANSPORTATION. THE STATION IS AN E-PIN IN LEAD IN THE TOP OF THE NORTHWEST CORNER OF A 36-CM SQUARE DRESSED GRANIT PILLAR THAT IS 95 CM TALL AND RECESSED 45 CM BELOW THE TOP OF A ROUND STEEL MAN-HOLE COVER THAT IS 70 CM IN DIAMETER AND RECESSED 4 CM BELOW GROUND. LOCATED 10.0 M (32.8 FT) NORTH FROM THE CENTER OF THE SOUTH ONE OF TWO PAVED CROSS OVERS, 7.3 M (24.0 FT) SOUTH FROM THE CENTER OF THE NORTH CROSS OVER, 7.3 M (24.0 FT) WEST FROM THE WEST EDGE OF THE NORTH BOUND HIGHWAY LANES, 11M (3.6 FT) NORTH FROM A FIBERGLASS WITNESS POST, 11CM EAST OF THE WEST EDGE OF THE GRANIT MONUMENT, AND 11CM SOUTH FROM THE NORTH EDGE OF THE MONUMENT.

TRAVERSE TIES



* Main Traverse Completed 03/16/2005 by R.Gilman P.C. P. Winters D.Breer

ALIGNMENT TIES



DATUM	
VERTICAL	NAVD 88
HORIZONTAL	NAD 83
ADJUSTMENT	COMPASS

PROJECT NAME:	GUILFORD
PROJECT NUMBER:	IM-IR 091-1(25)
FILE NAME:	91a222/Survey/x91a222+1
PROJECT LEADER:	P. LIBBY
DESIGNED BY:	P. BEYOR
TIE SHEET	
PLOT DATE:	22-JUL-2013
DRAWN BY:	S. DONOVAN
CHECKED BY:	P. BEYOR
SHEET	5 OF 46