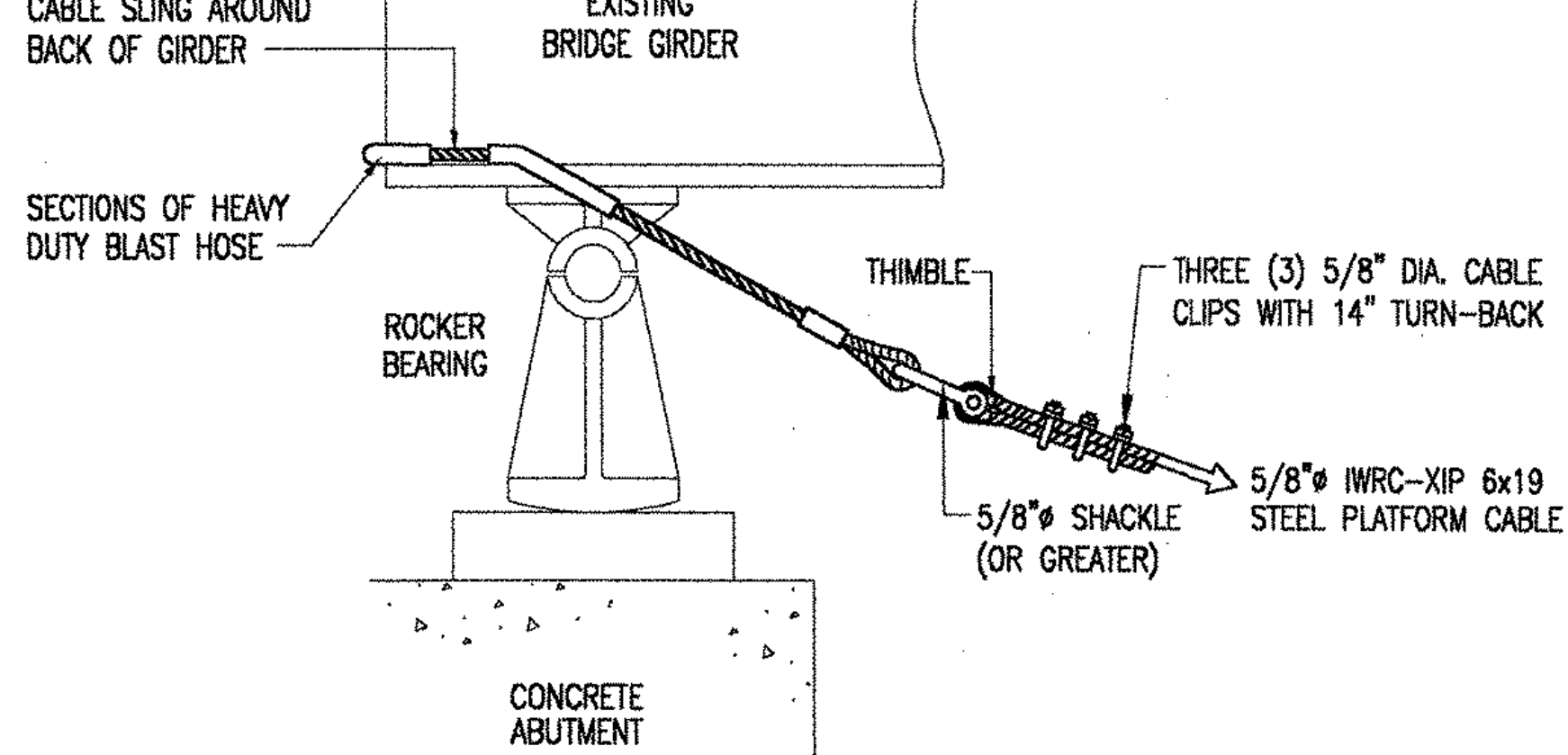
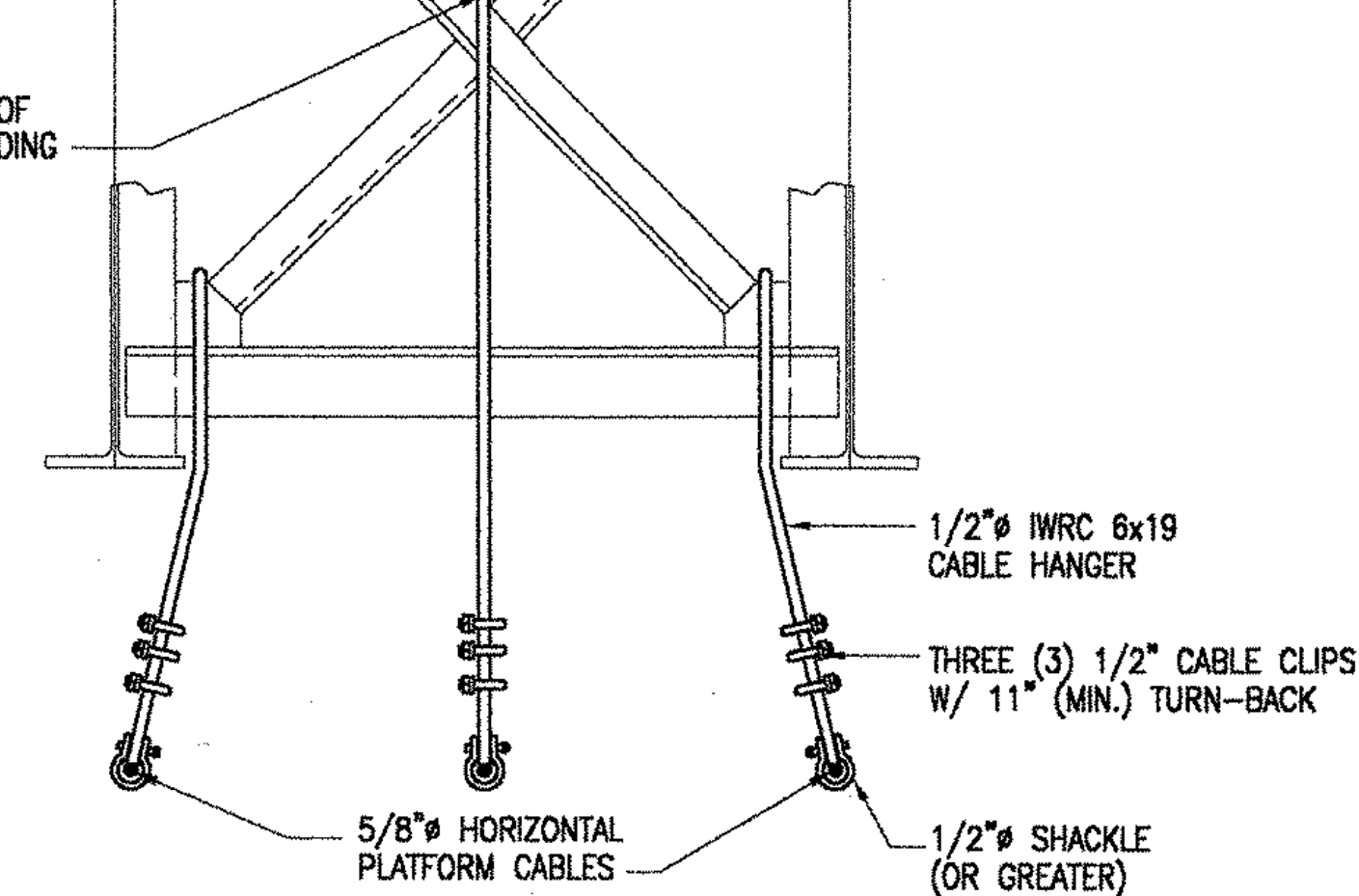


PLAN VIEW

DETAIL #2A
CABLE ATTACHMENT @ ABUTMENTS
NOT-TO-SCALE

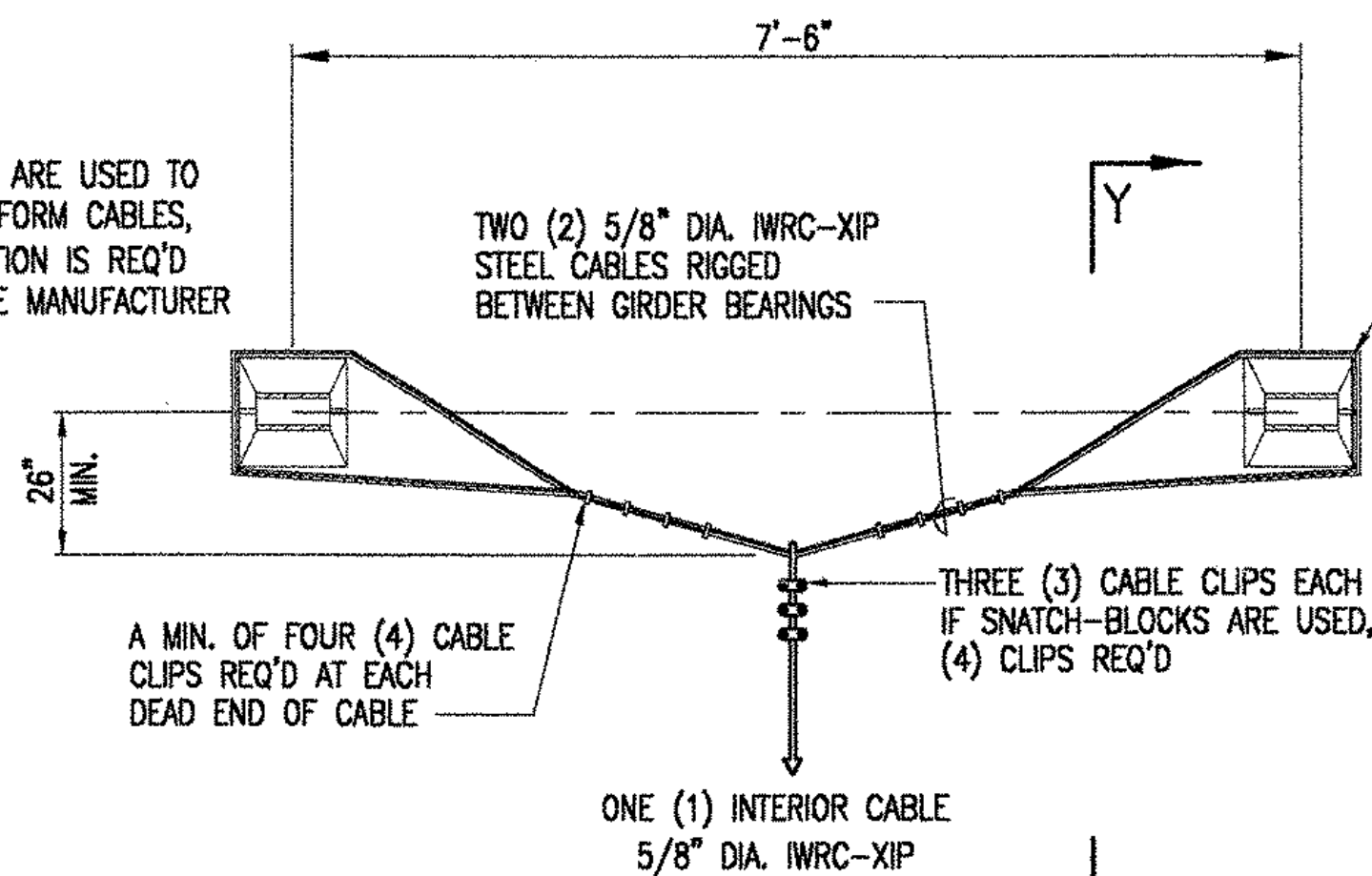


SECTION X-X



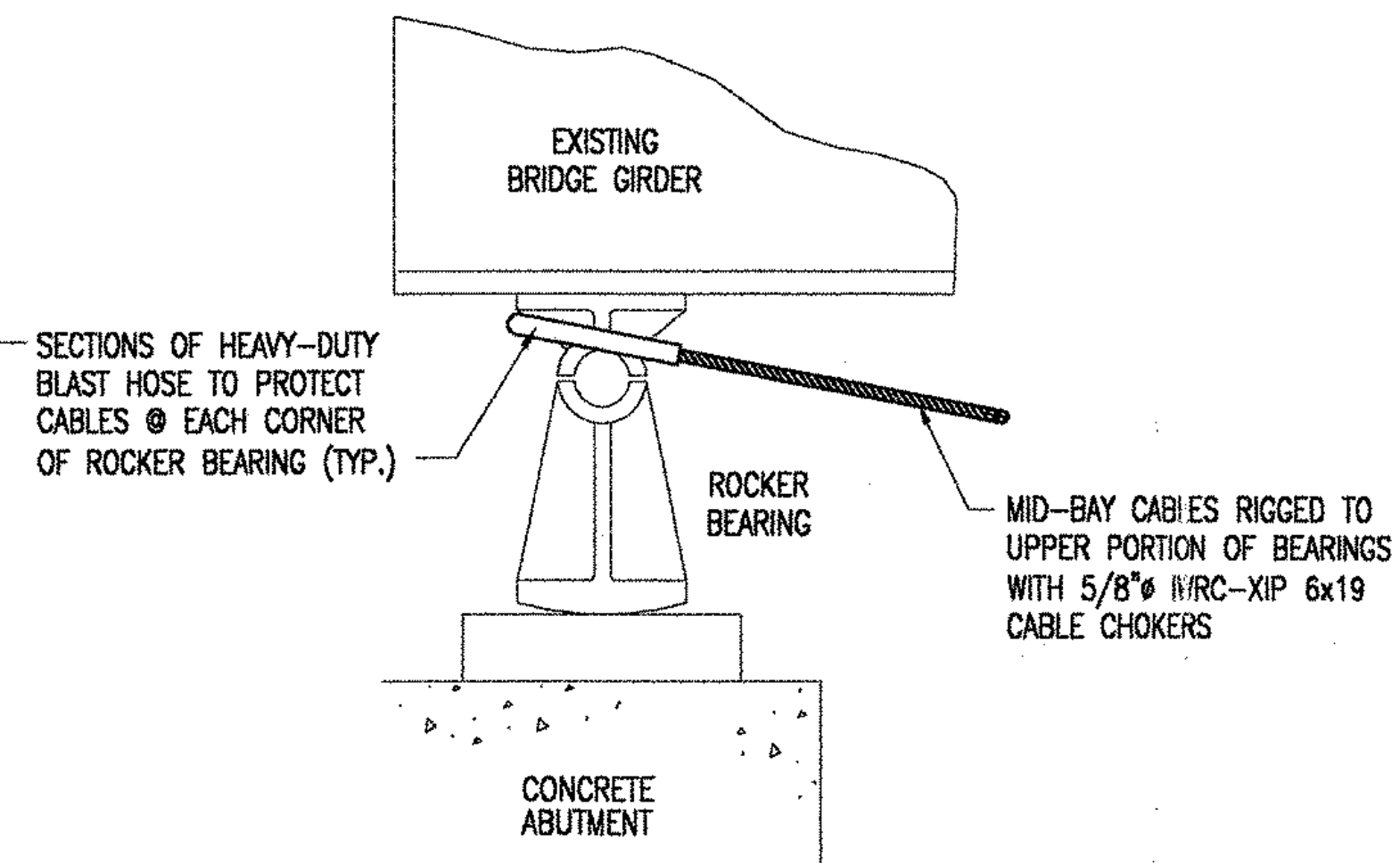
DETAIL #2B
TYPICAL SUPPORT HANGER
NOT-TO-SCALE

IF SHACKLES ARE USED TO ATTACH PLATFORM CABLES, MIN. DEFLECTION IS REQ'D PER SHACKLE MANUFACTURER

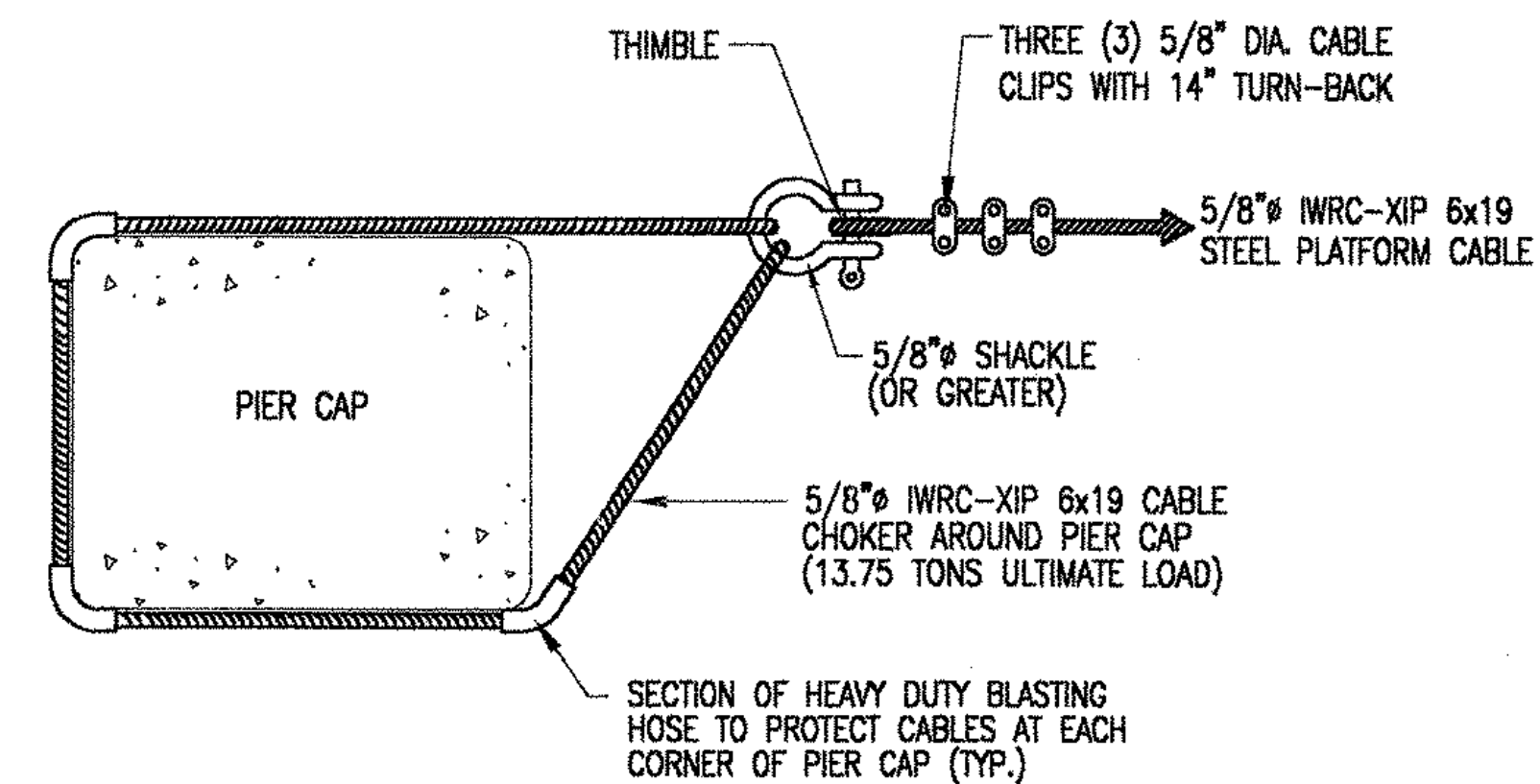


PLAN VIEW

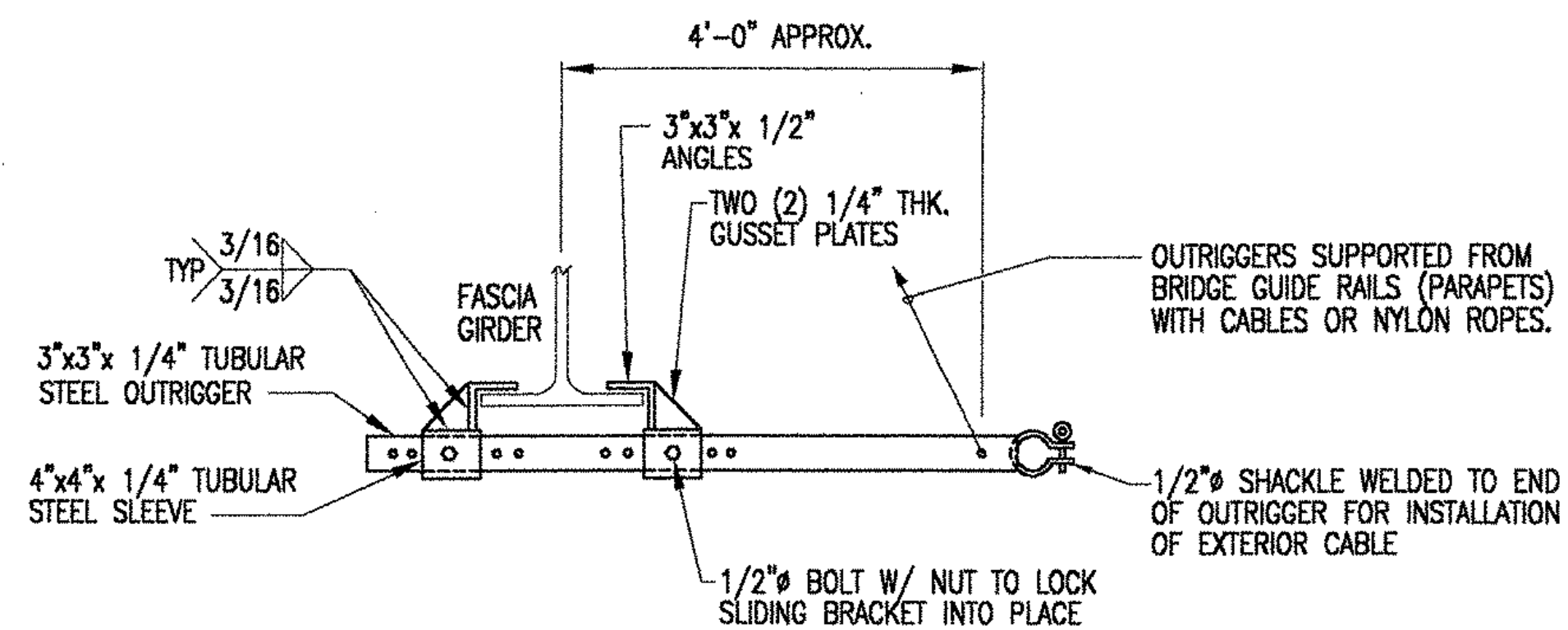
DETAIL #2C
MID-BAY CABLE ATTACHMENT
NOT-TO-SCALE



SECTION Y-Y



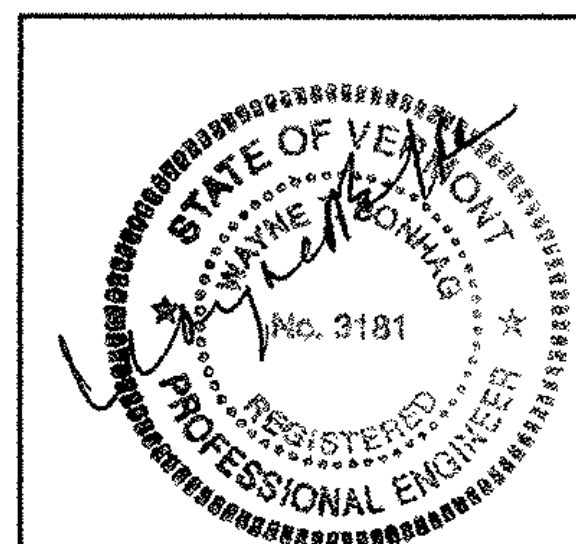
DETAIL #2D
ALTERNATE MID-CABLE ATTACHMENT
NOT-TO-SCALE



DETAIL #2E
OUTRIGGER DETAIL
NOT-TO-SCALE

FABRICATION NOTES:

1. ALL STRUCTURAL TUBE STEEL SHALL CONFORM TO ASTM A500 GRADE B, WITH A MINIMUM $F_y=46$ KSI AND $F_t=58$ KSI.
2. ALL STRUCTURAL SHAPES AND PLATES SHALL CONFORM TO ASTM A36, WITH A MINIMUM $F_y=36$ KSI.
3. ALL BOLTS TO BE ASTM A-325.
4. ALL WELDS SHALL BE MINIMUM 3/16" FILLET, UNLESS OTHERWISE NOTED.
5. STEEL FABRICATION AND INSTALLATION SHALL CONFORM TO THE AISC MANUAL OF STEEL CONSTRUCTION, 9TH EDITION.
6. ALL WELDING SHALL BE PERFORMED IN ACCORDANCE WITH THE AWS STRUCTURAL WELDING CODE.



CD Containment Design, Inc.

1260 Prospect Road • Pittsburgh, PA 15227 • Phone: (412) 882-9046 • Fax: (412) 884-8091

NORTH STAR PAINTING COMPANY

STATE OF VERMONT AGENCY OF TRANSPORTATION
CONTRACT IR 089-1(13) WINDSOR COUNTY
RTE. 1-89 over THE WHITE RIVER, VT. 14 & NECR
SUSPENDED PLATFORM DETAILS

CDI JOB NO. 21-11	DATE 1-22-00	OWG. NO. PL-2	120 0
----------------------	-----------------	------------------	----------

P.E. SEAL