

PLAN VIEW

MARK: 6635-300-B
 EXPANSION BEARING
 (5) EACH @ ABUTMENTS 1,2,3,4
 (20) REQ'D TOTAL
 SCALE: 1/2

SHOP DRAWING REVIEW

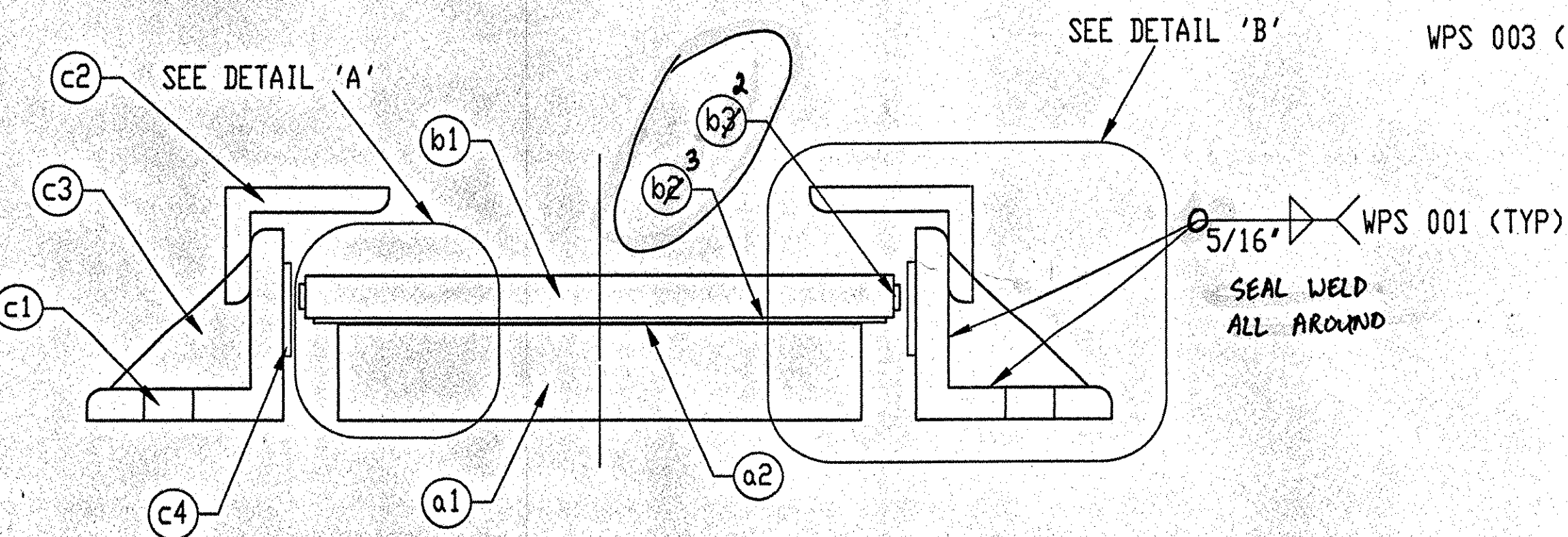
REVIEWED AS REQUIRED BY THE CONSTRUCTION CONTRACT DOCUMENTS AND APPROVED, BUT ONLY FOR CONFORMANCE TO THE DESIGN CONCEPT OF THE WORK, AND SUBJECT TO FURTHER LIMITATIONS AND REQUIREMENTS CONTAINED IN THE CONSTRUCTION CONTRACT DOCUMENTS.

REJECTED REVISE AND RESUBMIT FURNISH AS CORRECTED

CORRECTIONS OR COMMENTS MADE ON THE SHOP DRAWINGS REQUIRE THIS REVIEW AND NOT BE RELIED UPON FOR CONFORMANCE TO THE DESIGN CONCEPT OF THE WORK, AND SUBJECT TO FURTHER LIMITATIONS AND REQUIREMENTS CONTAINED IN THE CONSTRUCTION CONTRACT DOCUMENTS. THIS CHECK IS ONLY FOR REVIEW OF GENERAL CONFORMANCE WITH THE DESIGN CONCEPT OF THE PROJECT AND GENERAL COMPLIANCE WITH THE INFORMATION GIVEN IN THE CONTRACT DOCUMENTS. THE CONTRACTOR IS RESPONSIBLE FOR CORRECTING AND CORRELATING ALL QUANTITIES AND DIMENSIONS, SELECTING FABRICATION PROCESSES AND TECHNIQUES OF CONSTRUCTION, COORDINATING HIS WORK WITH THAT OF ALL OTHER TRADES, AND PERFORMING HIS WORK IN A SAFE AND SATISFACTORY MANNER.

VHB Vanasse Hangen Brustlin, Inc.
 Engineers, Planners, and Scientists
 Six Bedford Place, Kilton Rd.
 Bedford, NH 03302 603.644.0888

Job Number: 50699
 Reviewed By: T.S. BRYANT
 Date: 11/1/99

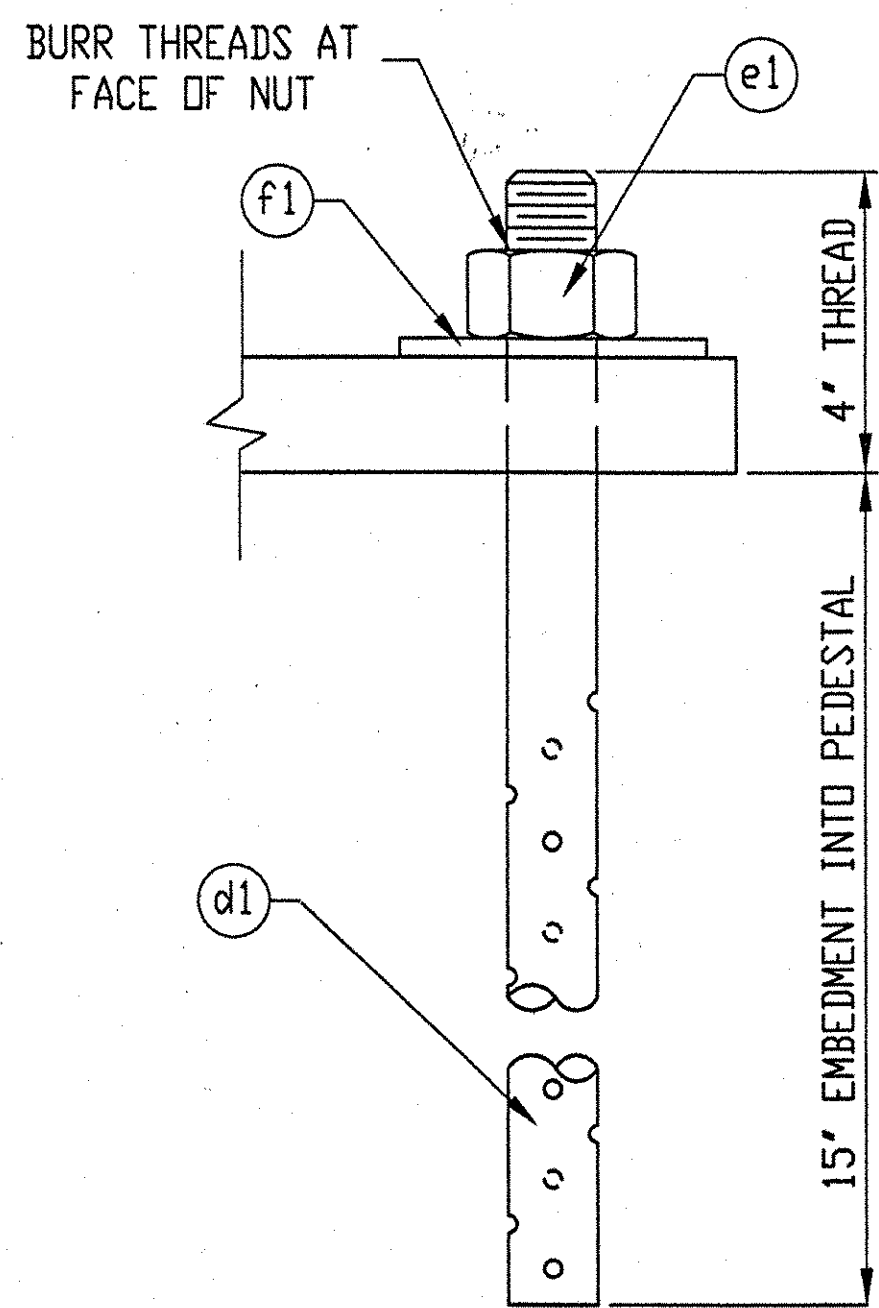


SECTION 'A-A'

DETAIL 'A'

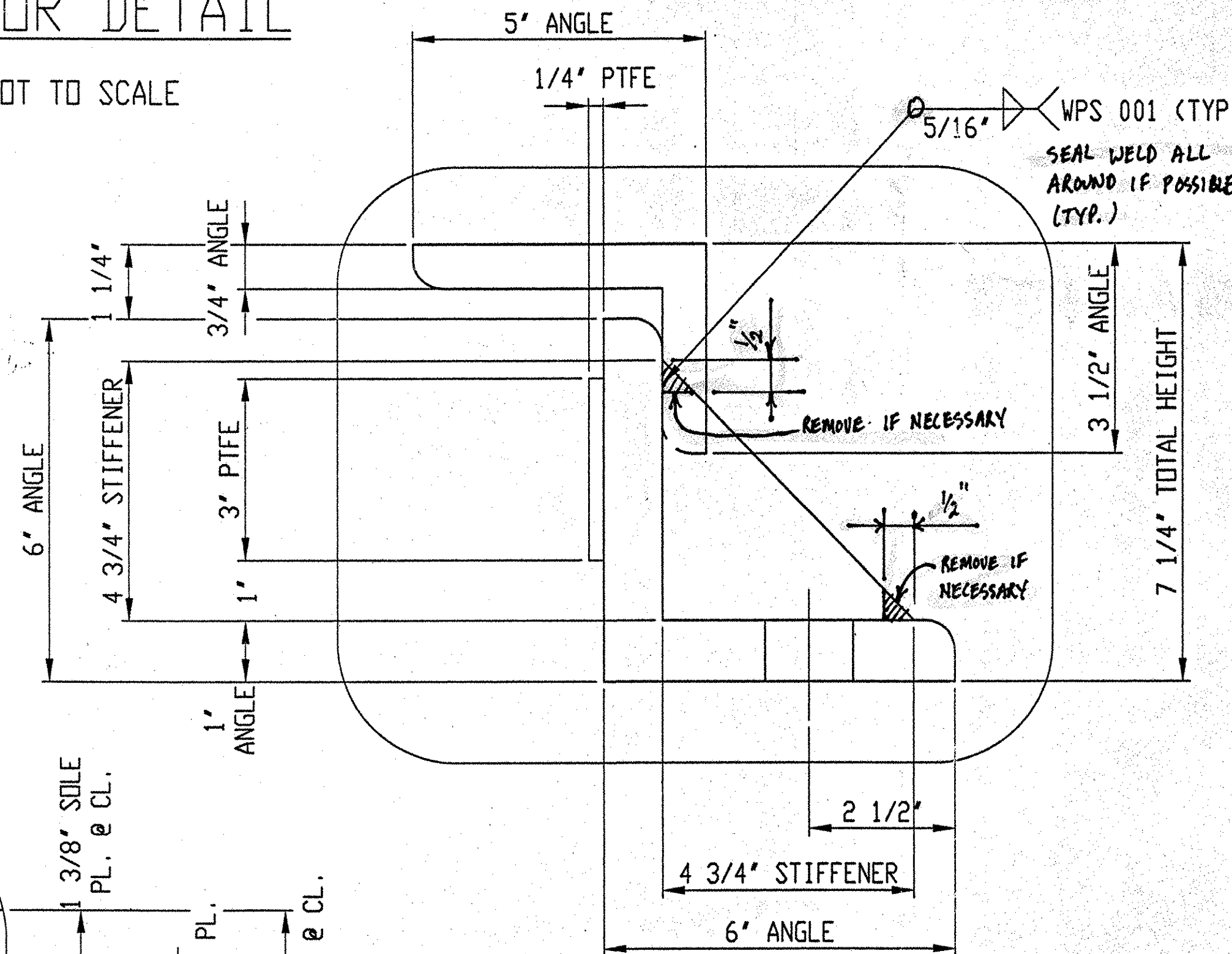
SCALE: FULL SIZE

PER SPECIFICATION SECTIONS 531.03 & 731.01, SHOW THE NUMBER OF LAMINATED JOINTS, WHICH SHALL NOT BE GREATER THAN 4.



ANCHOR DETAIL

NOT TO SCALE



DETAIL 'B'

SCALE: FULL SIZE



F.A.P. NO.:

STATE PROJ. NO.: IR 089-1(13)

BRIDGE NO: 11N & 11S

DESIGNER: VANASSE HANGEN BRUSTLIN, INC.

CONTRACTOR: WINTERSET, INC.

DSB FILE NO: 6635-300\sh-t-02

D.S. BROWN 6635-300-18322 SHEET 2 OF 2

LINE	PART	MARK	NO. REQ'D	DESCRIPTION	REMARKS
1		2A	20	FABRIC BEARING ASSEMBLY	
2	FABRIC PAD	a1	20	2 7/8" X 14" X 16"	AASHTO 18.4.10.1
3	PTFE SHEET	a2	20	1/8" X 14" X 16"	PURE VIRGIN UNFILLED, EPOXY BONDED TO PAD
4					
5		2B	20	SOLE PLATE ASSEMBLY	
6	BEVELED SOLE PLATE	b1	20	1 1/2"-1 1/4" X 18" X 24"	ASTM A709 GR 36, GALVANIZED A123
7	STAINLESS STEEL PLATE	b2	40	3/16" X 3/4" X 23 1/2"	ASTM A240 TYPE 304 W/88 MIRROR FINISH
8	STAINLESS STEEL PLATE	b3	20	3/16" X 17 1/2" X 23 1/2"	ASTM A240 TYPE 304 W/88 MIRROR FINISH
9					
10		2C	40	RETAINER ASSEMBLY	
11	RETAINER ANGLE	c1	40	L6" X 6" X 1" X 16"	ASTM A709 GR 36, GALVANIZED A123
12	CLIP ANGLE	c2	80	L5" X 3 1/2" X 3/4" X 3"	ASTM A709 GR 36, GALVANIZED A123
13	STIFFENER	c3	40	1" X 4 3/4" X 4 3/4"	ASTM A709 GR 36, GALVANIZED A123
14	PTFE	c4	40	1/4" X 3" X 16"	PURE VIRGIN UNFILLED, EPOXY TO RET. ANGLE GLASS FIBER OR CARBON FILLED PER SPECIFICATION SECTION 731.04
15					
16		2D	80	ANCHOR BOLT ASSEMBLY	
17	SWEDGED ANCHOR BOLT	d1	80	1 1/2" Ø X 19" W/ 4" THREADED	ASTM A449, GALVANIZED A133
18					
19		2E	80	HEX NUT ASSEMBLY	
20	HEX NUT	e1	80	1 1/2" Ø	ASTM A563, GALVANIZED A153
21					
22		2F	80	WASHER PLATE ASSEMBLY	
23	WASHER PLATE	f1	80	3/8" X 3" X 3" W/ 1 7/8" Ø HOLE	ASTM A36, GALVANIZED A123

GENERAL NOTES

- PAD AND MATERIALS CONFORM TO VERMONT D.T. SPECIFICATIONS FOR ELASTOMERIC BEARINGS. PREFORMED FABRIC BEARING PADS.
- THESE SHOP DRAWINGS WERE PREPARED IN ACCORDANCE WITH THE CONTRACT PLANS AND SPECIFICATIONS. THE D.S. BROWN COMPANY DOES NOT ACCEPT LIABILITY FOR THE DESIGN OF THE PRODUCTS DETAILED IN THESE SHOP DRAWINGS.
- D.S. BROWN TO SUPPLY ONLY THE PARTS SHOWN ON THIS DRAWING.
- ALL ASTM A709 GR 36 STEEL SHALL BE GALVANIZED.
- PRIOR TO GALVANIZING, ALL CORNERS AND EDGES OF STEEL PLATES, SHAPES, ETC., SHALL BE GROUNDED TO A 1/16 INCH RADIUS.

DATE	SYM	REVISION	DR	CK
THE D.S. BROWN COMPANY, INC. NORTH BALTIMORE, OHIO 45872-0158 U.S.A.				
SCALE: AS NOTED		DRAWN BY: K189968		
DATE: 2/25/99		DESIGNER: Eric Bryant		
ROUTE 1-89 OVER WHITE RIVER & VT 14 103 WINDSOR COUNTY HARTFORD, VERMONT				
VERSIFLEX ELASTOMERIC BEARING				DRAWING NUMBER 6635-300-02