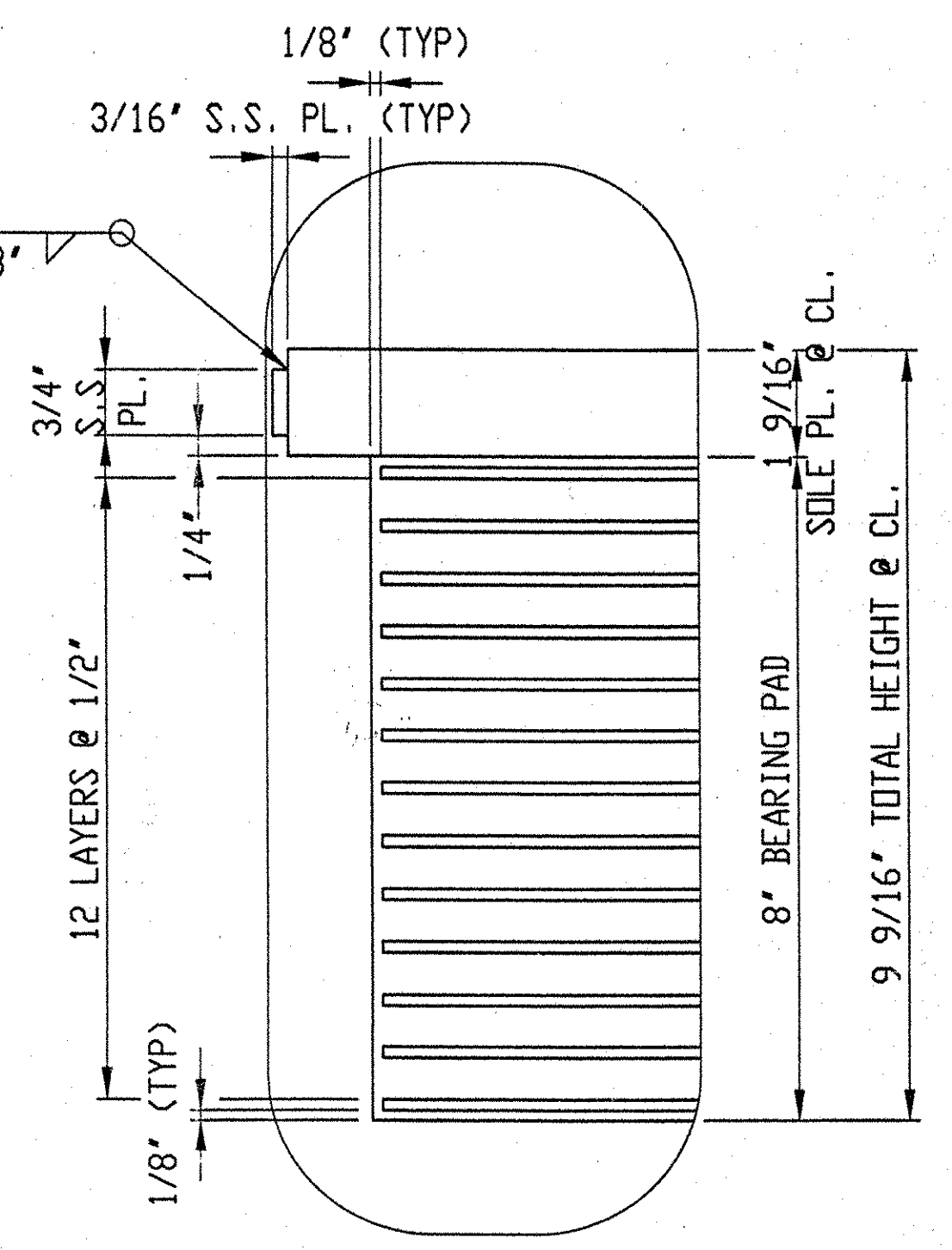
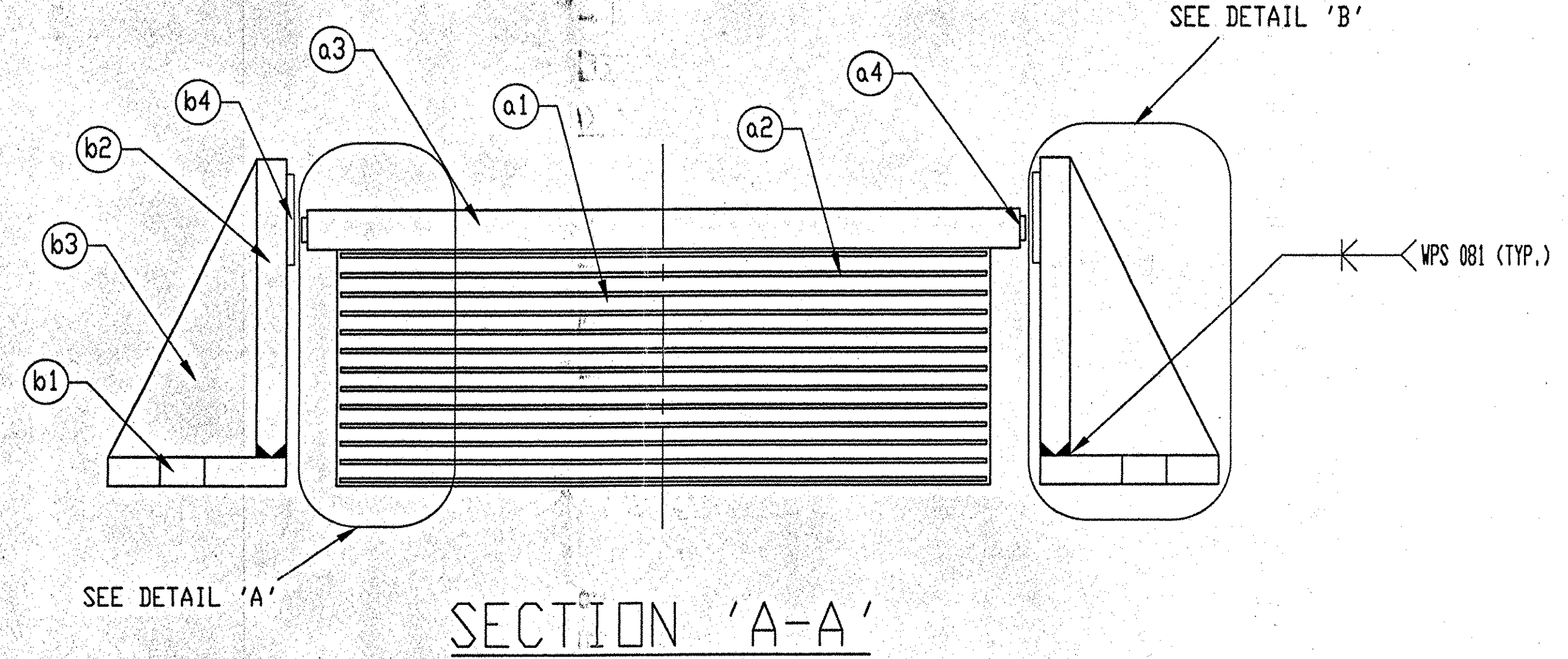


ANCHOR DETAIL
NOT TO SCALE

SUPPLY ESTIMATED DEAD LOAD DEFLECTION FOR PIER EXPANSION BEARINGS BASED ON ELASTOMER PROPERTIES AND LOADS GIVEN IN CONTRACT PLANS. SEE EXPANSION BEARING NOTE #10 ON SHEET 18 OF THE CONTRACT PLANS.

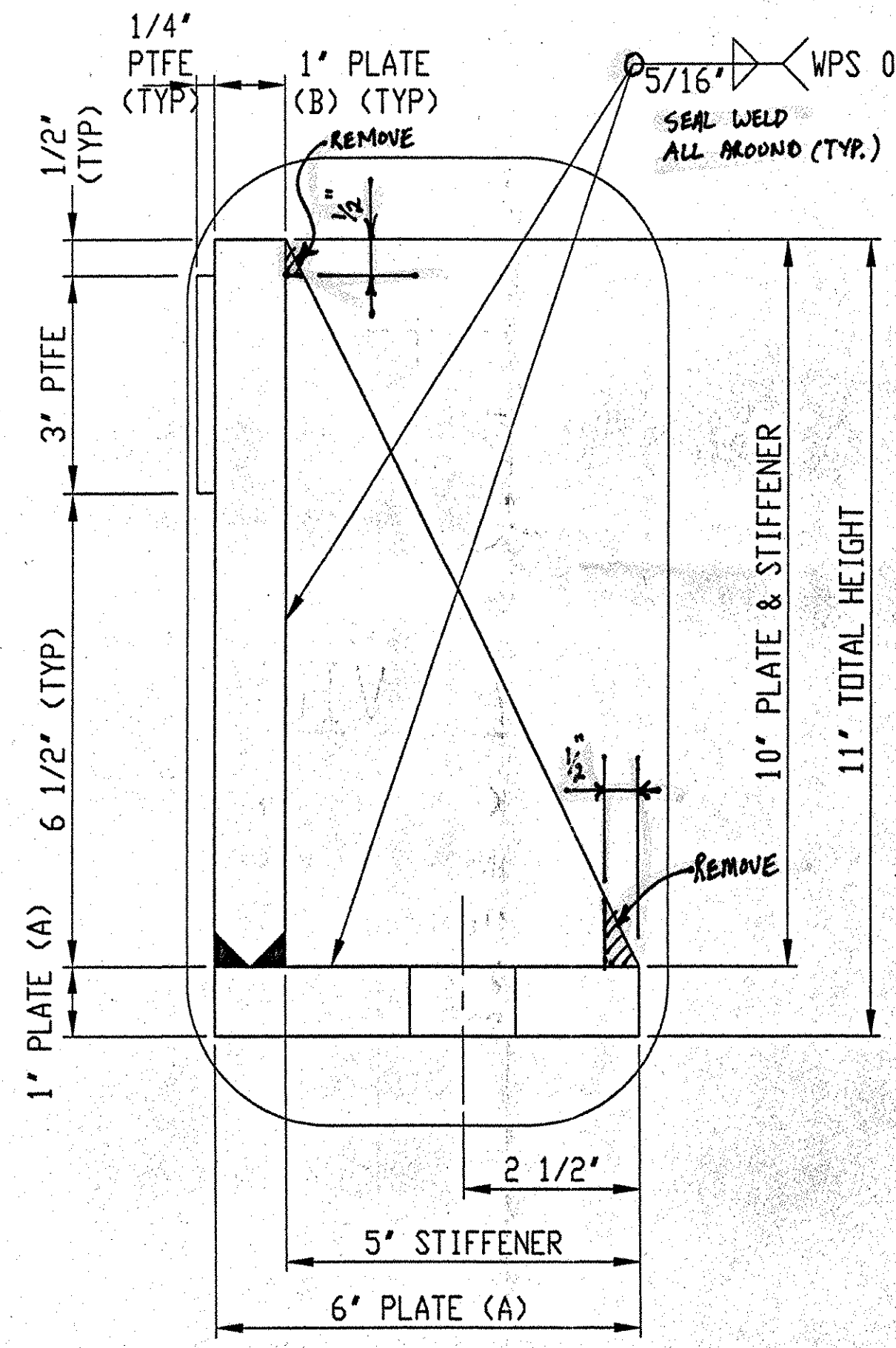


DETAIL 'A'
SCALE: FULL SIZE



SECTION 'A-A'

LINE	PART	MARK	NO. REQ'D	DESCRIPTION	REMARKS
1	ELASTOMERIC BEARING ASSEMBLY				
2	ELASTOMERIC PAD	a1	40	8" X 16" X 22"	50±5 DUROMETER NEOPRENE (4505.83 LBS)
3	SHIMS	a2	520	10GA. X 15 3/4" X 21 3/4"	ASTM A570 GR 36
4	BEVELED SOLE PLATE	a3	40	1 5/8" - 1 1/2" X 24" X 24"	ASTM A709 GR 36, VULC. TO PAD, GALV. A123
5	STAINLESS STEEL PLATE	a4	80	3/16" X 3/4" X 23 1/2"	ASTM A240 TYPE 304 W/8 MIRROR FINISH
6					
7	RETAINER ASSEMBLY				
8	PLATE (A)	b1	80	1" X 6" X 16"	ASTM A709 GR 36, GALVANIZED A123
9	PLATE (B)	b2	80	1" X 10" X 16"	ASTM A709 GR 36, GALVANIZED A123
10	STIFFENER	b3	80	1" X 5" X 10"	ASTM A709 GR 36, GALVANIZED A123
11	PTFE	b4	80	1/4" X 3" X 16"	PURE VIRGIN UNFILLED, EPOXY BOND TO PL. (B) GLASS FIBER OR CARBON FILLED PER SPECIFICATIONS SECTION 731.04
12					
13	ANCHOR BOLT ASSEMBLY	1C	160		
14	SWEDGED ANCHOR BOLT	c1	160	1 1/2" Ø X 19" W/ 4" THREADED	ASTM A449, GALVANIZED A153
15					
16	HEX NUT ASSEMBLY	1D	160		
17	HEX NUT	d1	160	1 1/2" Ø	ASTM A563, GALVANIZED A153
18					
19	WASHER PLATE ASSEMBLY	1E	160		
20	WASHER PLATE	e1	160	3/8" X 3" X 3" W/ 1 7/8" Ø HOLE	ASTM A36, GALVANIZED A123



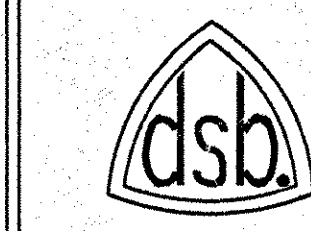
DETAIL 'B'
SCALE: FULL SIZE

GENERAL NOTES

- PAD AND MATERIALS CONFORM TO VERMONT D.O.T. SPECIFICATIONS FOR ELASTOMERIC BEARINGS.
- THESE SHOP DRAWINGS WERE PREPARED IN ACCORDANCE WITH THE CONTRACT PLANS AND SPECIFICATIONS. THE D.S. BROWN COMPANY DOES NOT ACCEPT LIABILITY FOR THE DESIGN OF THE PRODUCTS DETAILED IN THESE SHOP DRAWINGS.
- D.S. BROWN TO SUPPLY ONLY THE PARTS SHOWN ON THIS DRAWING.
- ELASTOMERIC MATERIAL SHALL HAVE A MINIMUM LOW TEMPERATURE GRADE OF 4.
- ALL ASTM A709 GR 36 STEEL SHALL BE GALVANIZED.
- GIRDER FLANGE TO BE FIELD WELDED TO THE SOLE PLATE.
- PRIOR TO GALVANIZING, ALL CORNERS AND EDGES OF STEEL PLATES, SHAPES, ETC., SHALL BE GROUNDED TO A 1/16" RADIUS.

DATA		6635-300-A
AASHTO SHAPE FACTOR		9.0
AREA OF COMPRESSION		352.0
AREA OF SHEAR		352.0
EFFECTIVE RUBBER THICKNESS		6.3
LENGTH/HEIGHT		3.5

D.S. BROWN 6635-300-18322 SHEET 1 OF 2



F.A.P. NO.:
STATE PROJ. NO.: IR 089-1(13)
BRIDGE NO.: 11N & 11S
DESIGNER: VANASSE HANGEN BRUSTLIN, INC.
CONTRACTOR: WINTERSSET, INC.



DATE	SYM	REVISION	DR	CK
THE D.S. BROWN COMPANY, INC. NORTH BALTIMORE, OHIO 45872-0158 U.S.A.				
SCALE: AS NOTED				
DATE: 2/25/99	Eric Brubaker			
ROUTE 1-89 OVER WHITE RIVER & VT 14 102				
WINDSOR COUNTY HART FORD, VERMONT				
VERSIFLEX ELASTOMERIC BEARING				
DRAWING NUMBER 6635-300-01				

SHOP DRAWING REVIEW

REVIEWED AS REQUIRED BY THE CONSTRUCTION CONTRACT DOCUMENTS AND APPROVED, BUT ONLY FOR CONFORMANCE TO THE DESIGN CONCEPT OF THE WORK, AND SUBJECT TO FURTHER LIMITATIONS AND REQUIREMENTS CONTAINED IN THE CONSTRUCTION CONTRACT DOCUMENTS.

REJECTED REVISE AND RESUBMIT FURNISH AS CORRECTED

CORRECTIONS OR COMMENTS MADE ON THE SHOP DRAWINGS DURING THIS REVIEW DO NOT RELIEVE CONTRACTOR FROM COMPLIANCE WITH REQUIREMENTS OF THE DRAWINGS AND SPECIFICATIONS. THIS CHECK IS ONLY FOR REVIEW OF GENERAL CONFORMANCE WITH THE DESIGN CONCEPT OF THE PROJECT AND GENERAL COMPLIANCE WITH THE INFORMATION GIVEN IN THE CONTRACT DOCUMENTS. THE CONTRACTOR IS RESPONSIBLE FOR CONFIRMING AND CORRELATING ALL QUANTITIES AND DIMENSIONS, SELECTING FABRICATION PROCESSES AND TECHNIQUES OF CONSTRUCTION, COORDINATING HIS WORK WITH THAT OF ALL OTHER TRADES, AND PERFORMING HIS WORK IN A SAFE AND SATISFACTORY MANNER.

VHB Vanasse Hangen Brustlin, Inc.
Engineers, Planners, and Scientists
Six Bedford Farms, Keen Rd.,
Bedford, NH 03102 603 644 0888

Job Number: 50619
Reviewed By: T.S. BAYNE
Date: 4/21/1999