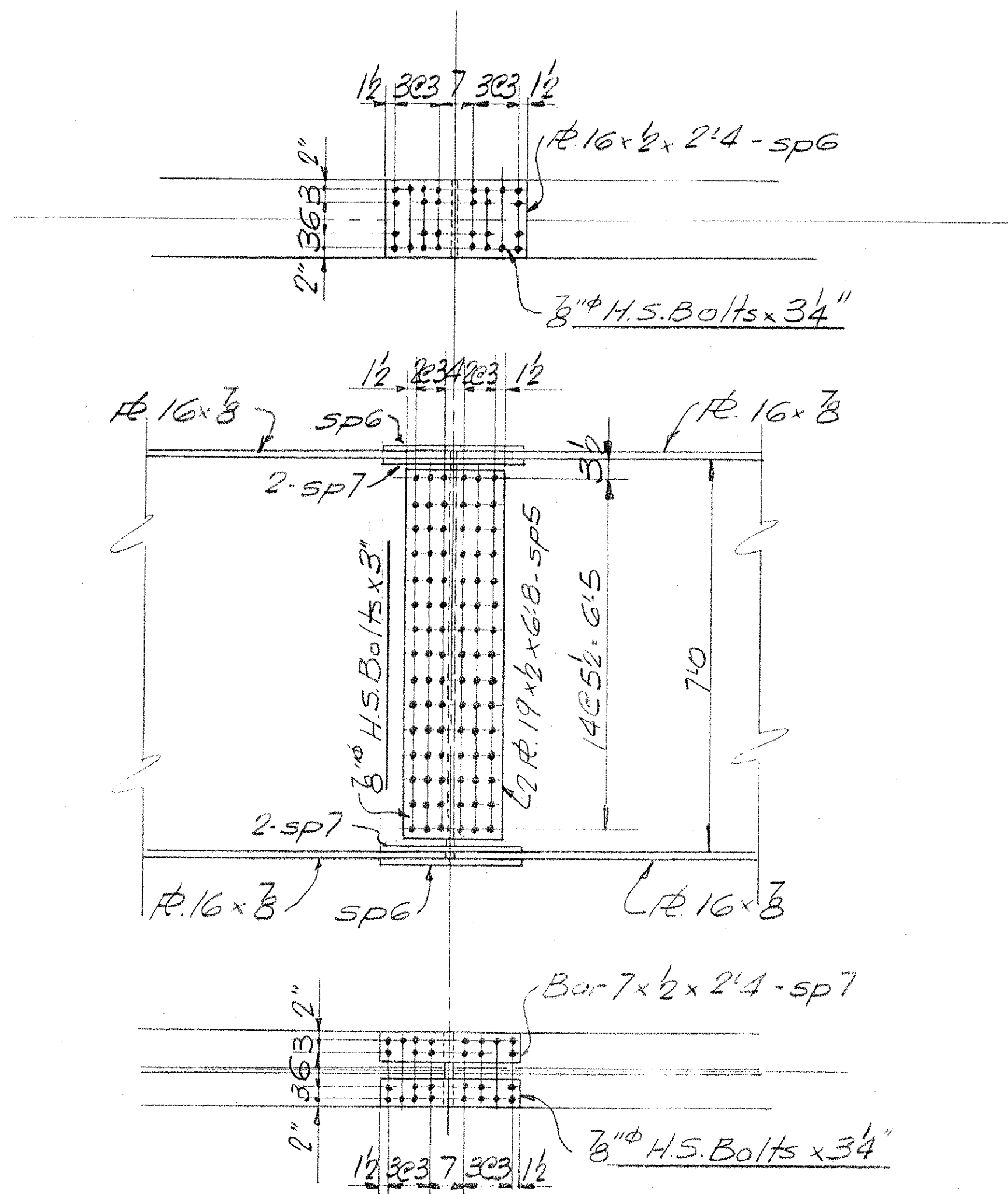


DETAIL-SPLICE "A"



DETAIL-SPLICE "B"

Note: Payment is to be for weight of Splice "B" as designed on contract Plans.

NOTE

Splice connections to be made with 7/8" High Strength Bolts. Holes to be 15/16"  $\phi$ . For GENERAL NOTES see Dwg. E1

Material to be listed on Girder Dwg's.

IR 089-1(13)  
This sheet for information only  
**BR 11 N & S**

SHEET 89 OF 101

PROJ. No. I-89-1(6)	
NB & SB BRIDGES	
SPlice DETAILS	
Bancroft & Martin Inc. South Portland 7, Maine	
I-89 BRIDGE OVER WHITE RIVER HARTFORD, VERMONT	
CUSTOMER: CIANCHETTE BROS. INC.	
DESIGNER: VERMONT DEPT. OF HIGHWAYS	
DRAWN	1-13-66 J.P.F.
REVISION	1-25-66 J.P.F.
REVISION	
REVISION	
ORDER NO.	VERBAL
DWG. NO.	65-374-511

9004666