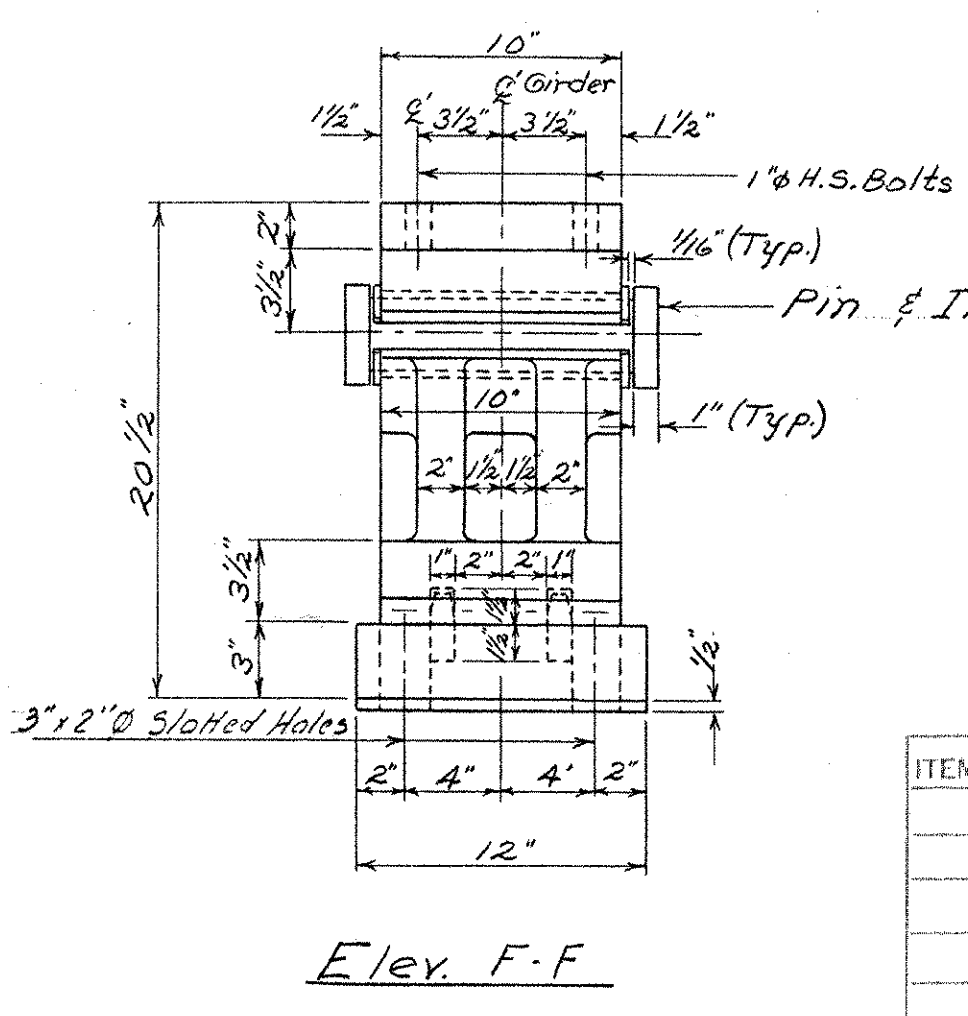
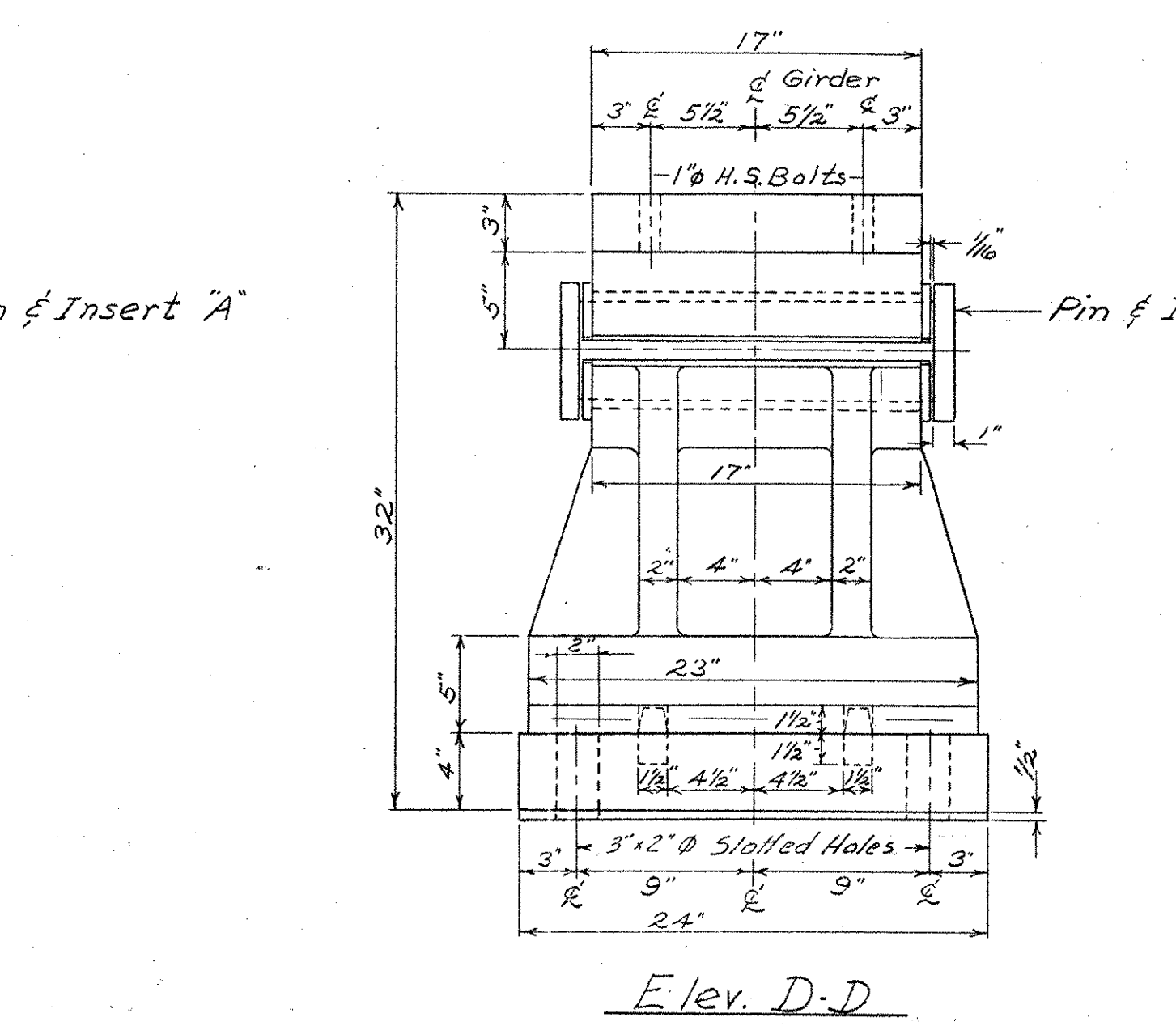
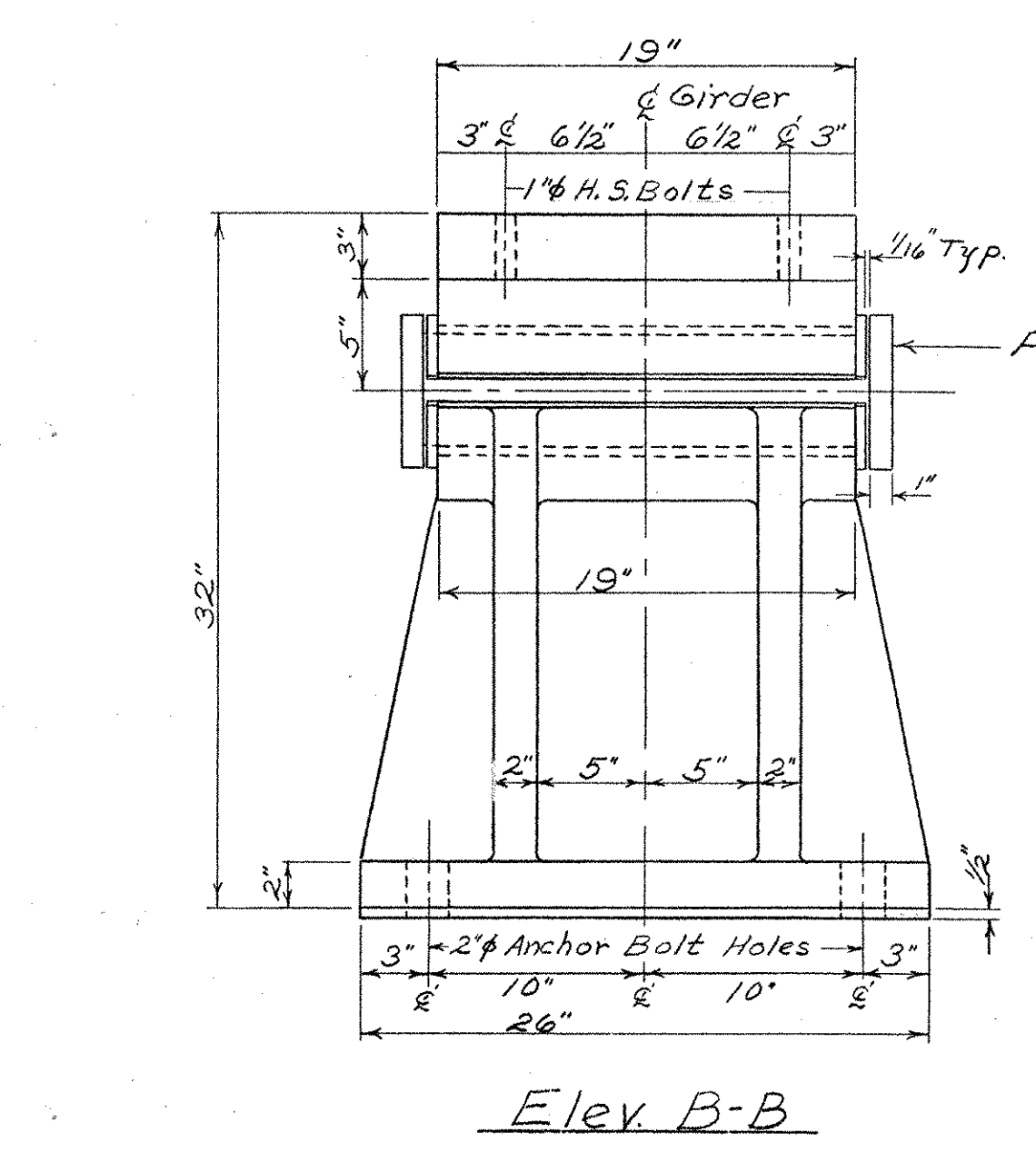


Details of Pins and Bronze Inserts

Note: Bronze inserts to be Cast Bridge Bearing Bronze, A.S.T.M. B-22-52, Alloy E, AASHO Designation M 107. All Bronze inserts are to be self-lubricating with tre-panned or drilled in lubricant filled recesses. The lubricating areas shall comprise not less than 25% of the total bearing area. Bronze inserts shall have a capacity of not less than 5000 p.s.i. of projected area. The coefficient of friction shall not exceed one-tenth.

Notes:

1. Preformed Fabric Pads 1/2" thick, equal in size to the bearing plates, shall be used under each bearing to conform with AASHO Standard Specifications For Highway Bridges, 1961, Section 2.10.3 (K).
2. The fabricator may furnish the bearing devices either as steel castings conforming to "Steel Castings for Highway Bridges", AASHO Designation M-192 Class 70, or as welded assemblies using structural steel conforming to AASHO Designation M183 in which case the weldment shall be stress relieved by heat treatment in accordance with A.W.S. Specifications Section 412. Should the fabricator elect to furnish a weldment in lieu of the details indicated for castings he may submit details for modifying the devices to facilitate welding the assembly.
3. Align devices so that all rocker arm shafts will be vertical at 45°F.



Weight of Fixed Pier Bearing = 1570 lbs.
Weight of Exp. Pier Bearing = 1965 lbs.
Weight of Exp. Abut. Bearing = 585 lbs

ITEM NO.	ITEM	UNIT	NET	TOTAL	FINAL
	CHAN. EXCAV. OF EARTH	C.Y.			
	CHAN. EXCAV. OF ROCK	C.Y.			
	UNCLASS. CHAN. EXCAV.	C.Y.			
	STRUCT. EXCAV.	C.Y.			
	CONC. CLASS AA (MOD.)	C.Y.			
	CONC. CLASS B (MOD.)	C.Y.			
	REINF. STEEL	LBS.			
	ASPHALTIC-ASB. COATING	S.Y.			
	TREATED TIMBER PILING	L.F.			
	SPLICES FOR STEEL PILING	EA.			
	STEEL PILING	L.F.			
	UNTREATED TIMBER PILING	L.F.			

IR 089-1(13)
This sheet for information only
BR 11 N & S
Br. 114 of 128

STATE OF VERMONT
DEPARTMENT OF HIGHWAYS

TOWN OF Hartford
ROAD No. I 89 BRIDGE NO.
I 89 over White River, Vt. 14, & CVRR
Abut. & Pier Bearing Devices
SCALE 1/2" = 1'-0"

DESIGNED BY
DRAWN BY W.B.T. CHECKED BY R.L.O.
PROJECT No. I-89-1(6)
SHEET 22 OF 59 SHEET 64 OF 101