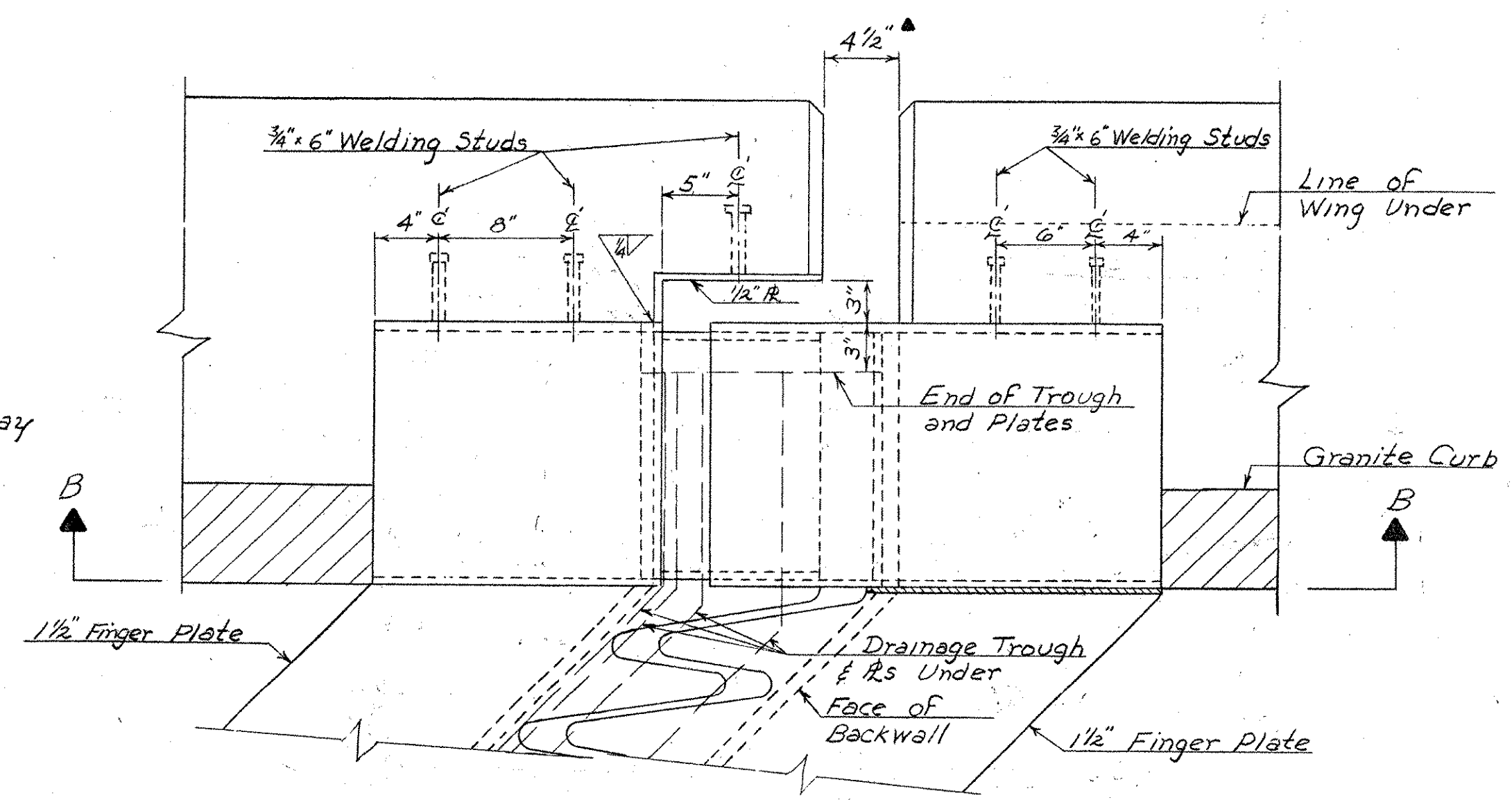


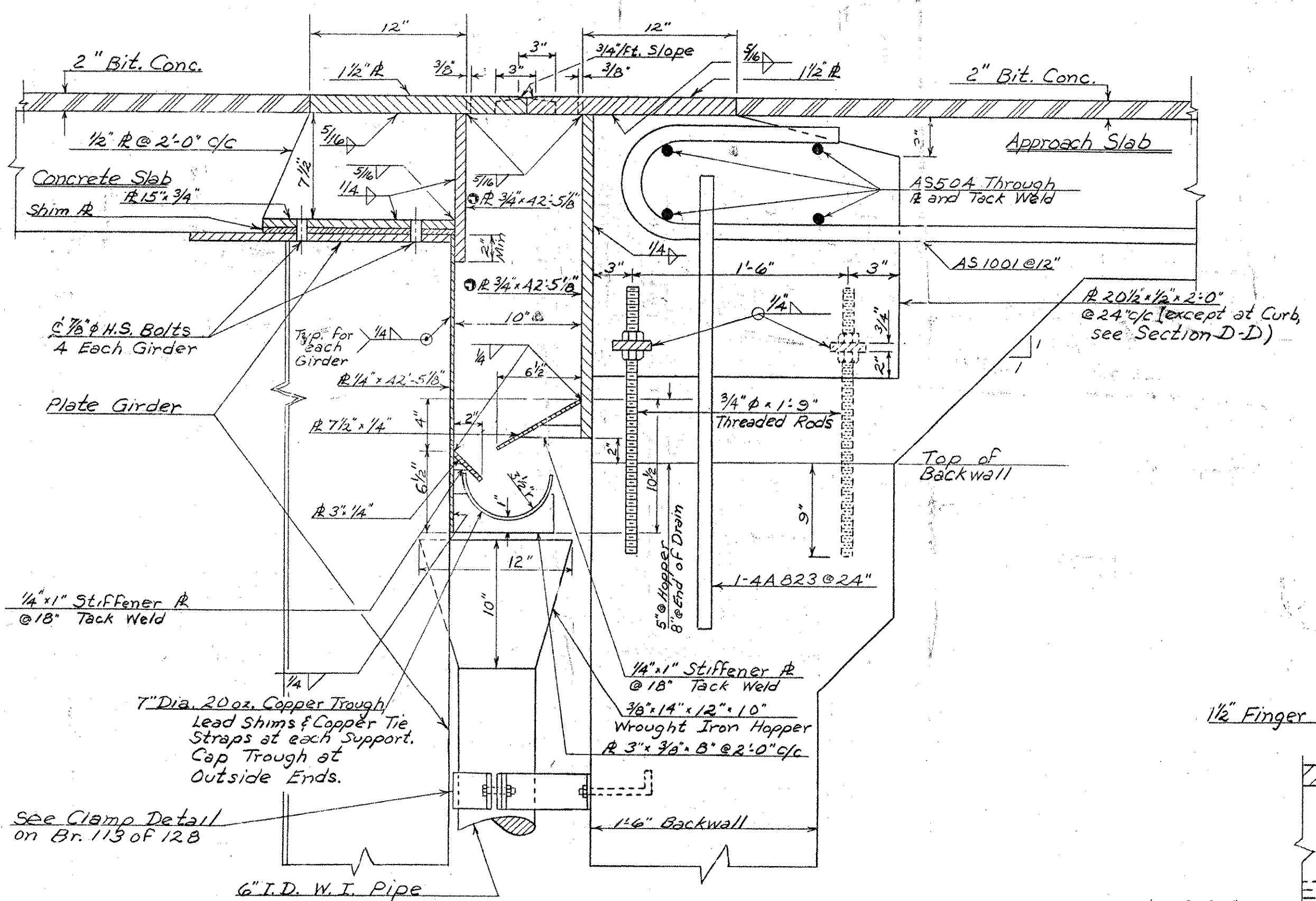
For Dimensions of Fingers see Br. 113 of 12B.

Plan of Expansion Dam at center of Roadway

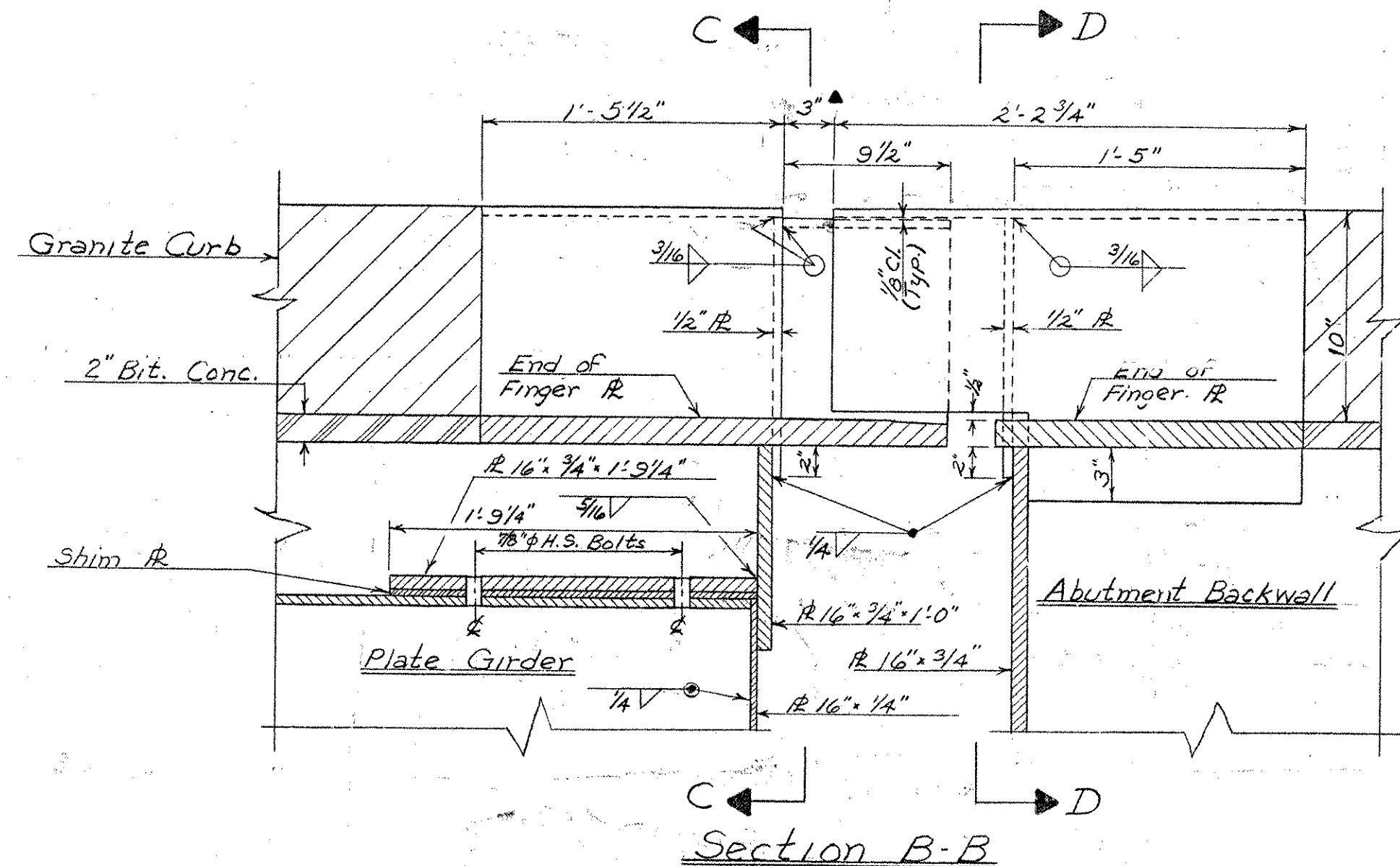


Plan of Expansion Dam at Curb (Opposite End Similar)

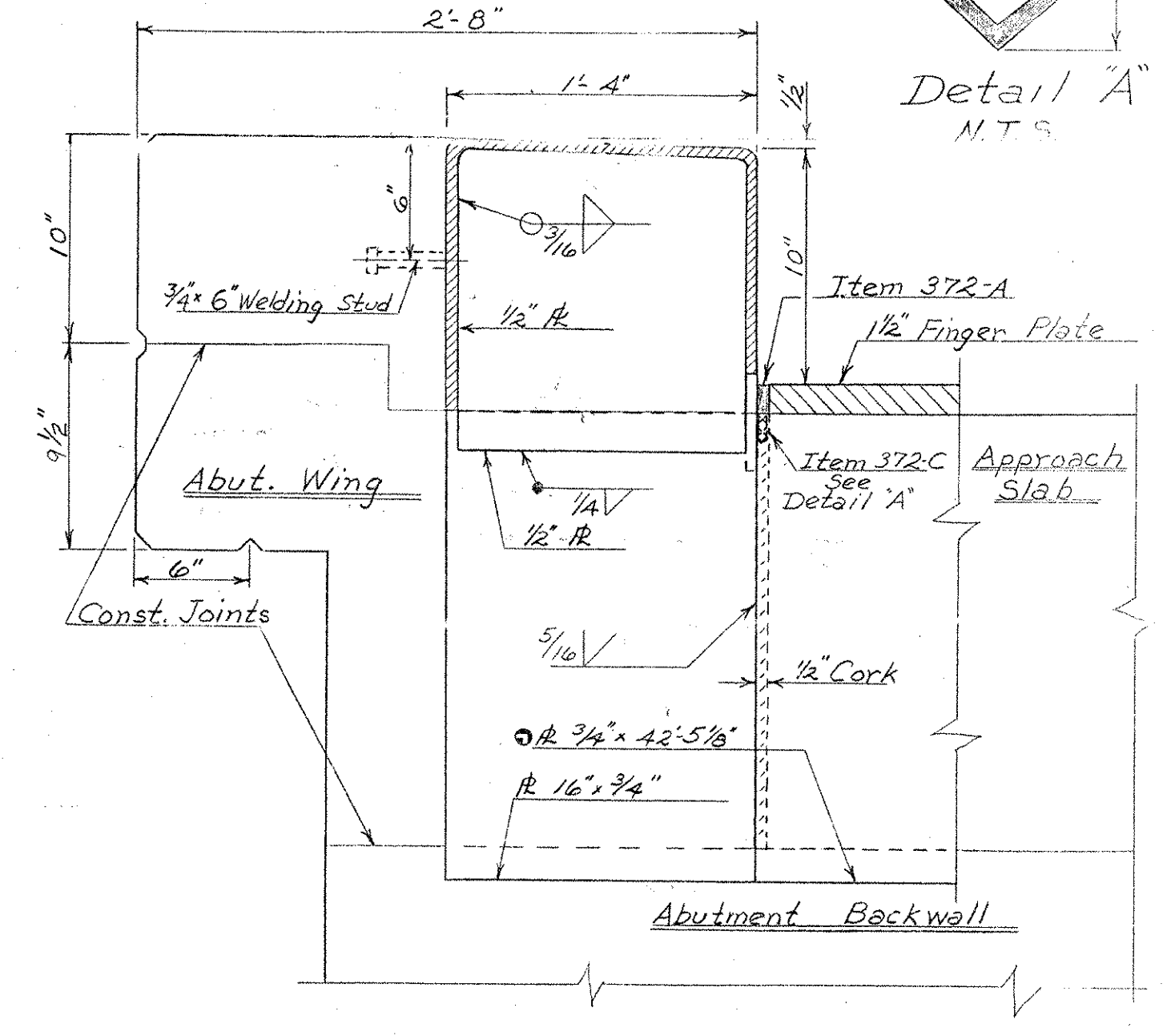
1. Plates marked \odot shall conform to the roadway grade and parabolic crown.
2. For additional details of Finger R's and drainage see Br. 113 of 12B.
3. All steel for the Expansion Dam shall be ASTM A 242 unless otherwise noted.
4. All plates which are embedded completely in concrete may be A-36 steel.
5. All clear dimensions indicated \blacktriangle are for 68°F.



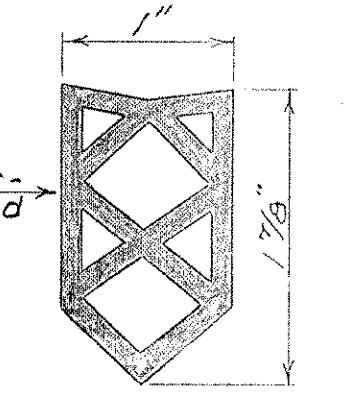
Section A-A



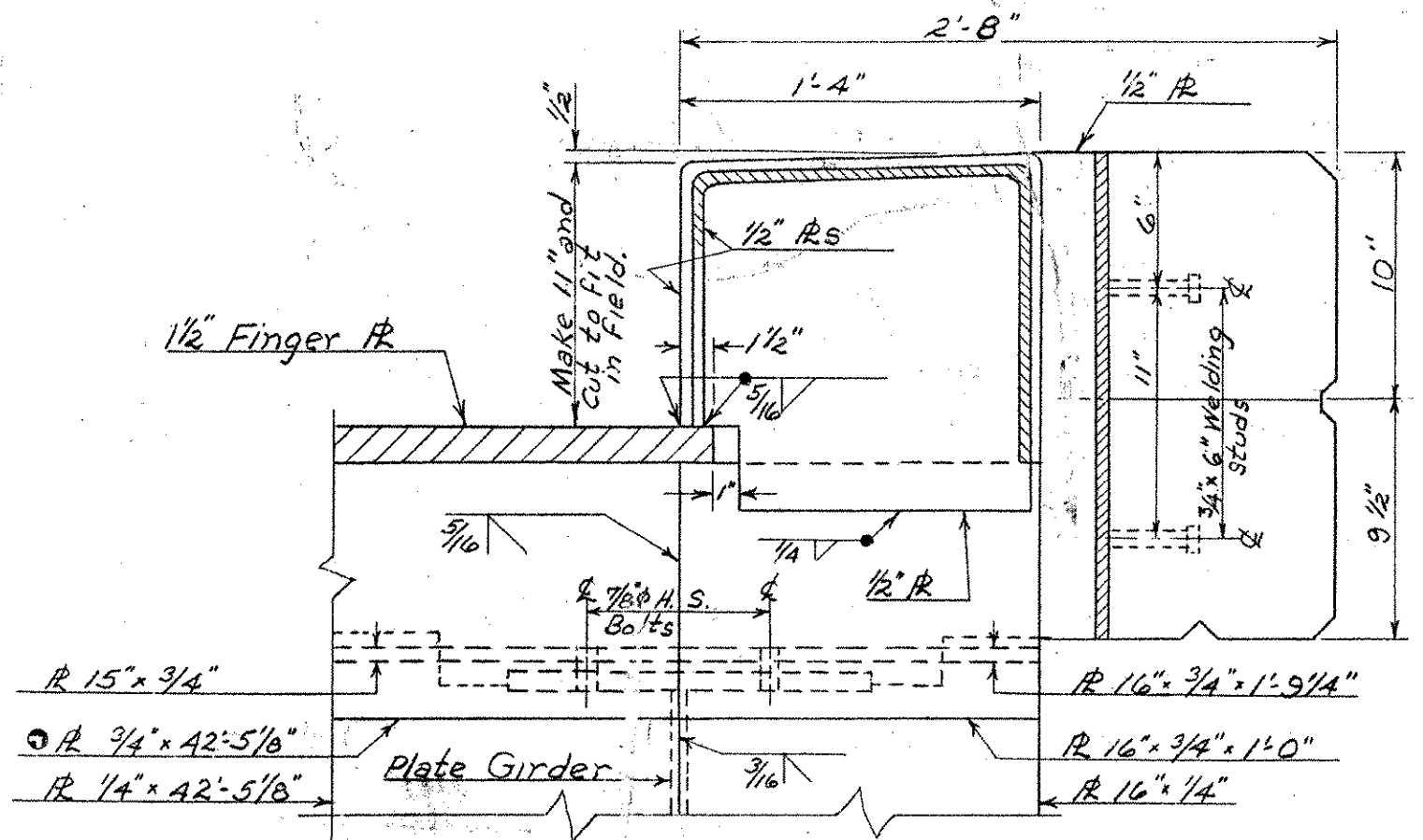
Section B-B



Section D-D



Detail A M.T.S.



Section C-C

ITEM NO.	ITEM	UNIT	NET	TOTAL	FINAL
	CHAN. EXCAV. OF EARTH	C.Y.			
	CHAN. EXCAV. OF ROCK	C.Y.			
	UNCLASS. CHAN. EXCAV.	C.Y.			
	STRUCT. EXCAV.	C.Y.			
	CONC. CLASS AA (MOD.)	C.Y.			
	CONC. CLASS B (MOD.)	C.Y.			
	REINF. STEEL	LBS.			
	ASPHALTIC-ASB. COATING	S.Y.			
	TREATED TIMBER PILING	L.F.			
	SPLICES FOR STEEL PILING	EA.			
	STEEL PILING	L.F.			
	UNTREATED TIMBER PILING	L.F.			

IR 089-1(13)
This sheet for information only
BR 11 N & S

Br. 112 of 12B

STATE OF VERMONT
DEPARTMENT OF HIGHWAYS

TOWN OF Hartford
ROAD NO. I 89 BRIDGE NO.
I 89 over White River, Vt. 1/4 of CVRR
Expansion Dam Details
SCALE 1/2" = 1'-0"

SURVEYED BY
DRAWN BY W.B.T. CHECKED BY R.L.O.

PROJECT NO. I 89-1(6)
SHEET 20 OF 59 SHEET 62 OF 101