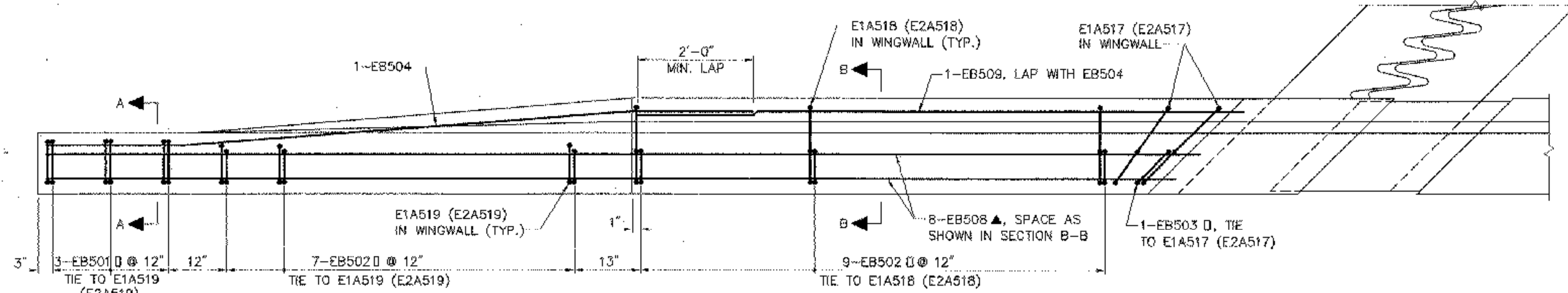
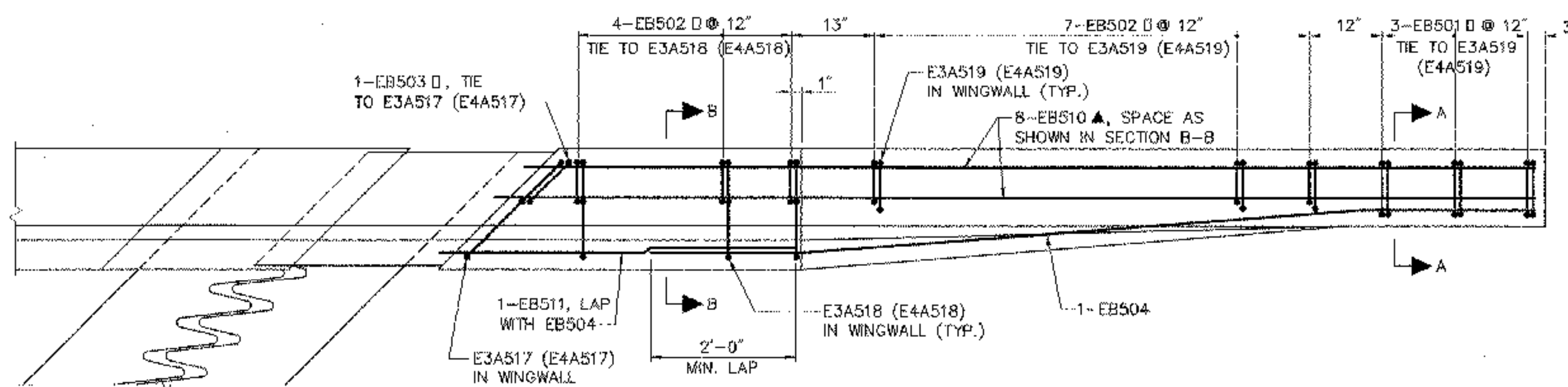


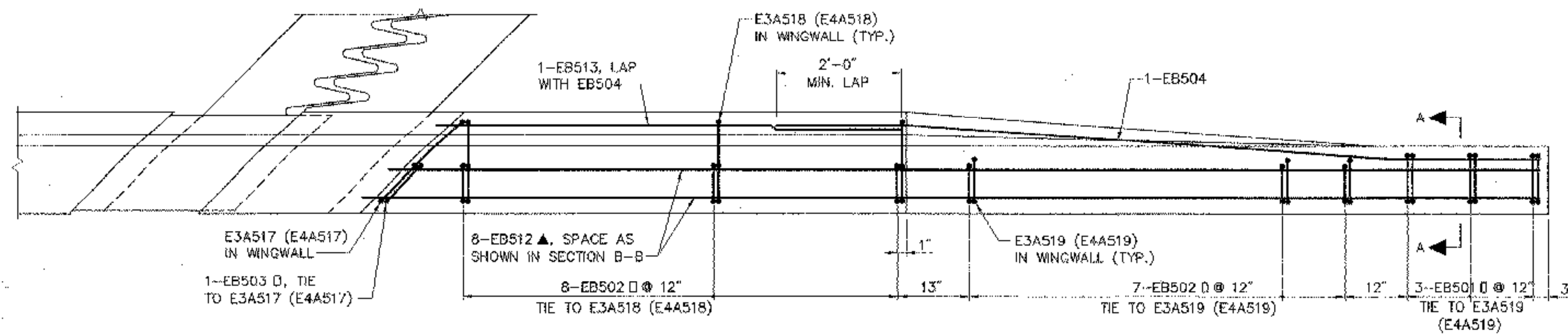
**ABUT. 1 & 2 WEST WINGWALL PLAN**  
SCALE: 3/4" = 1'-0"



**ABUT. 1 & 2 EAST WINGWALL PLAN**  
SCALE: 3/4" = 1'-0"

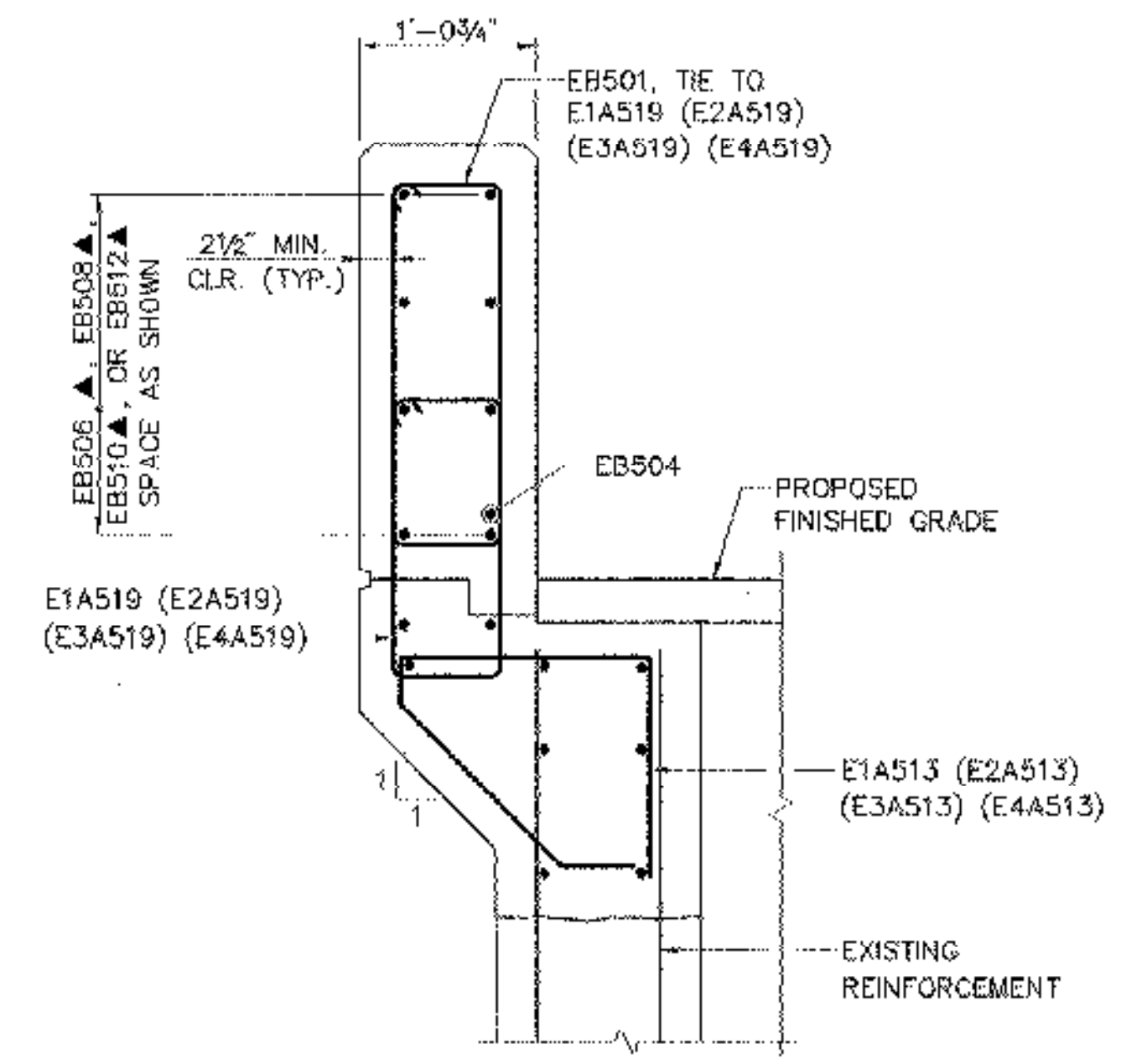


**ABUT. 3 & 4 WEST WINGWALL PLAN**  
SCALE: 3/4" = 1'-0"

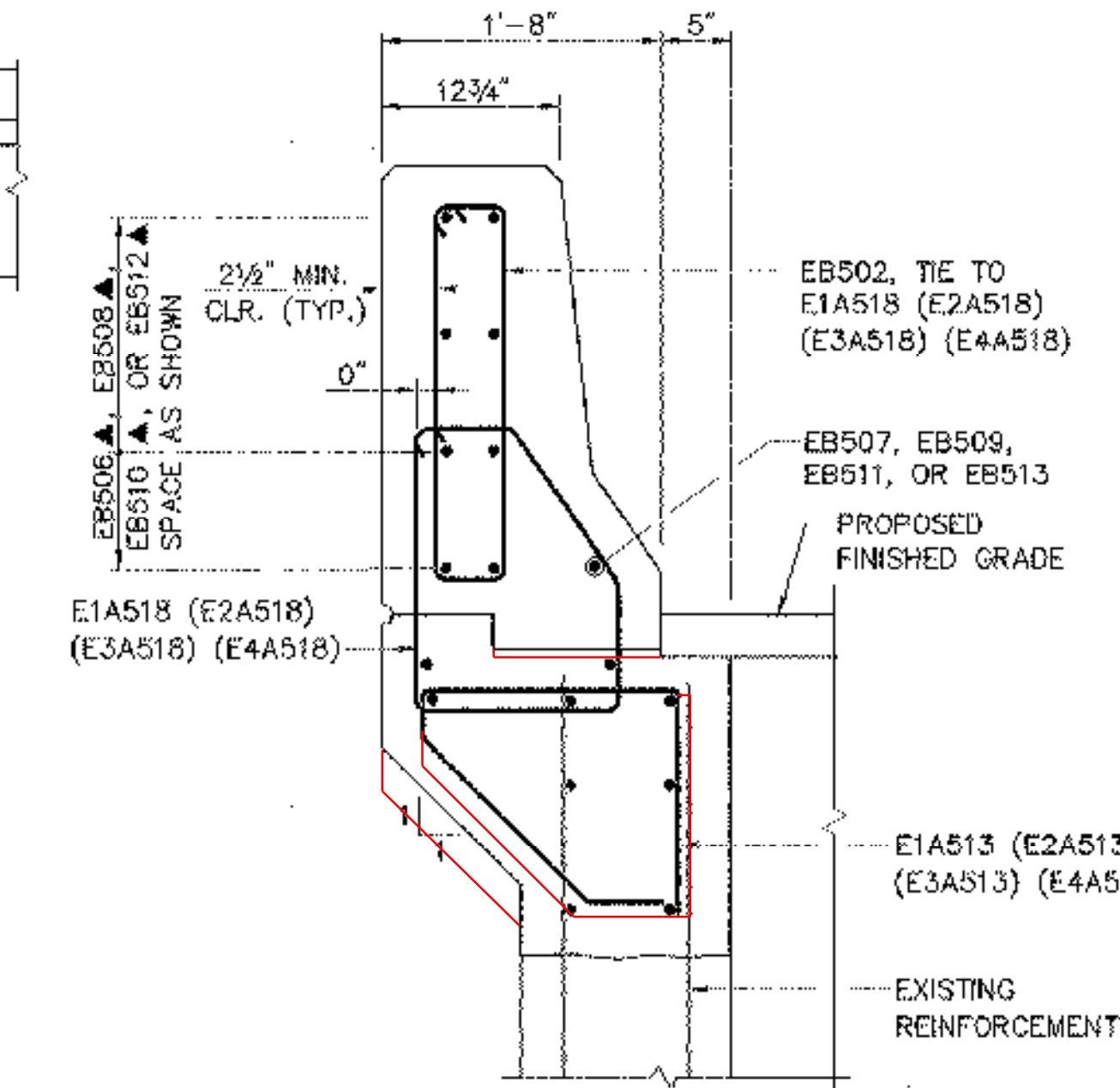


**ABUT. 3 & 4 EAST WINGWALL PLAN**  
SCALE: 3/4" = 1'-0"

LAP CURB PLATES IN DIRECTION OF TRAFFIC



**SECTION A-A**  
SCALE: 1" = 1'-0"



**SECTION B-B**  
SCALE: 1" = 1'-0"

- NOTES:**
- SEE SHEETS 27 & 28 FOR WINGWALL MASONRY DIMENSION.
  - SEE SHEETS 29 - 33 FOR WINGWALL REINFORCING STEEL LAYOUT AND DETAILS.
  - BAR MARKS IN PARENTHESES APPLY TO OTHER ABUTMENTS.  
"1A" = ABUTMENT 1  
"2A" = ABUTMENT 2  
"3A" = ABUTMENT 3  
"4A" = ABUTMENT 4
  - NUMBER OF BARS SHOWN IN PLAN ARE FOR ONE BARRIER CURB ON ONE WINGWALL ONLY.

LAP CURB PLATES IN DIRECTION OF TRAFFIC

STATE OF VERMONT AGENCY OF TRANSPORTATION	
Town Of HARTFORD	Bridge No. 11N & S
Highway No. 1-89 NB & SB	Log Sta. Surv. Sta.
1-89 NB & SB OVER WHITE RIVER, VT 14 & NECR	
BARRIER CURB END REINFORCEMENT	
Designed By T.S. BRYANT	Drawn By B.J. MASSE
Checked By S.M. HODGDON	Date 9/98
Bridge Design Supervisor C.D. BAKER	Date 9/98
PROJECT HARTFORD	PROJECT NO. IR 089-1(13)
VHB Cad Filename 50699RLR	Bridge Sheet No. 42
Sheet 42 of 101	

VANASSE HANGEN BRUSTLIN, INC.