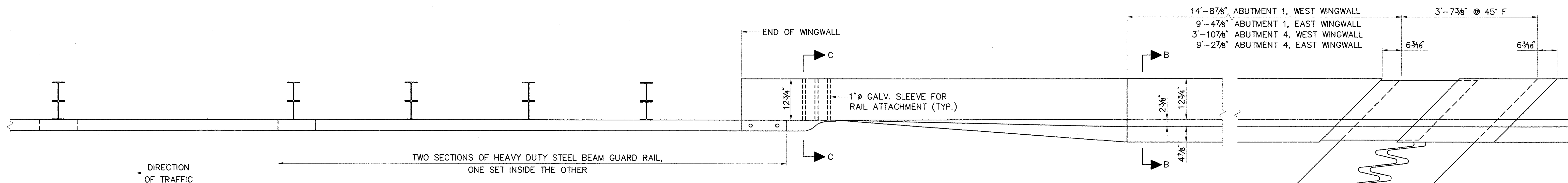


ELEVATION

SCALE: 3/4" = 1'-0"



PLAN

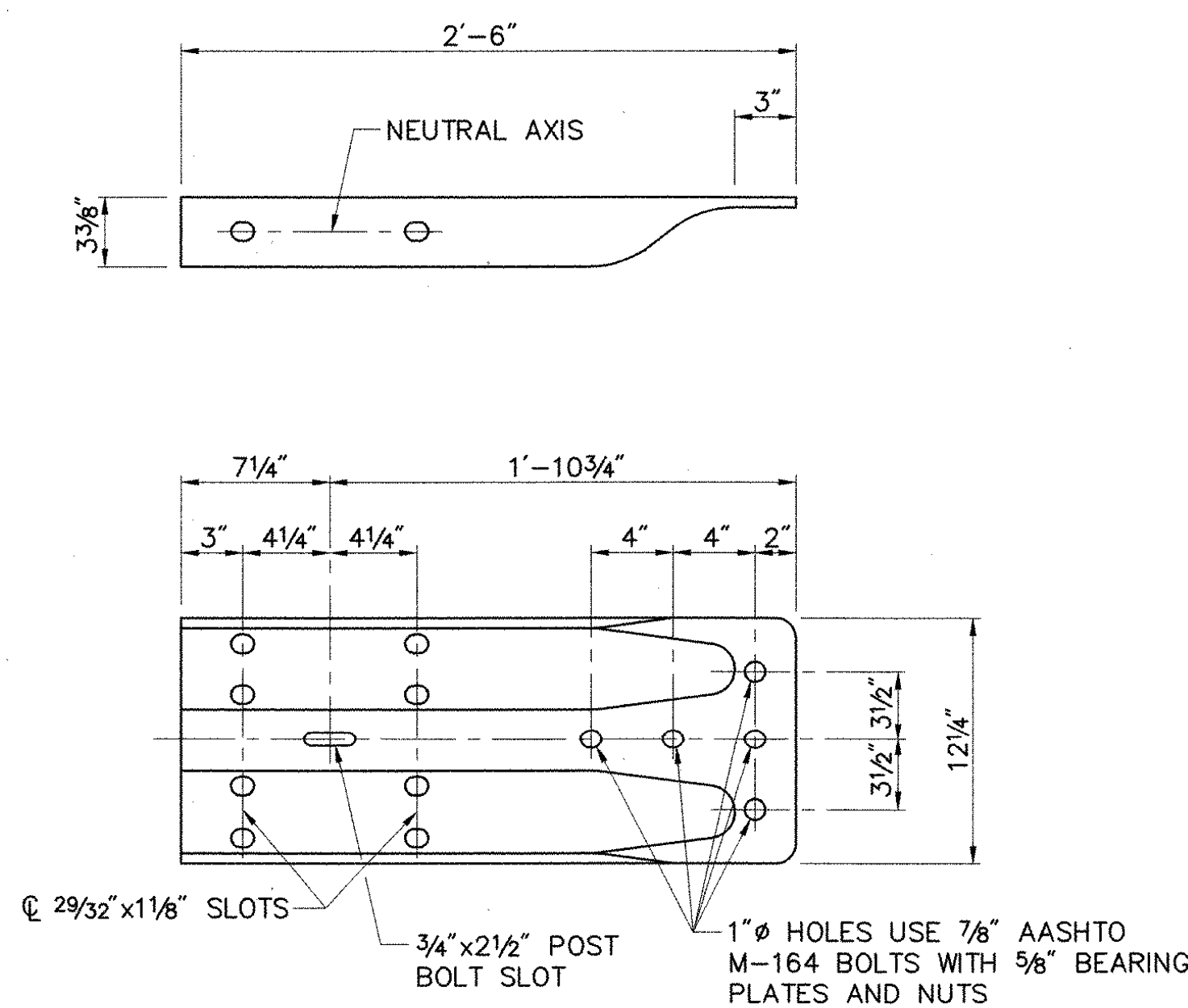
SCALE: 3/4" = 1'-0"

REMOVAL AND DISPOSAL OF GUARD RAIL TABLE

ABUTMENT	WINGWALL	LENGTH (FT.)
1	WEST	25
1	EAST	0
4	WEST	0
4	EAST	0

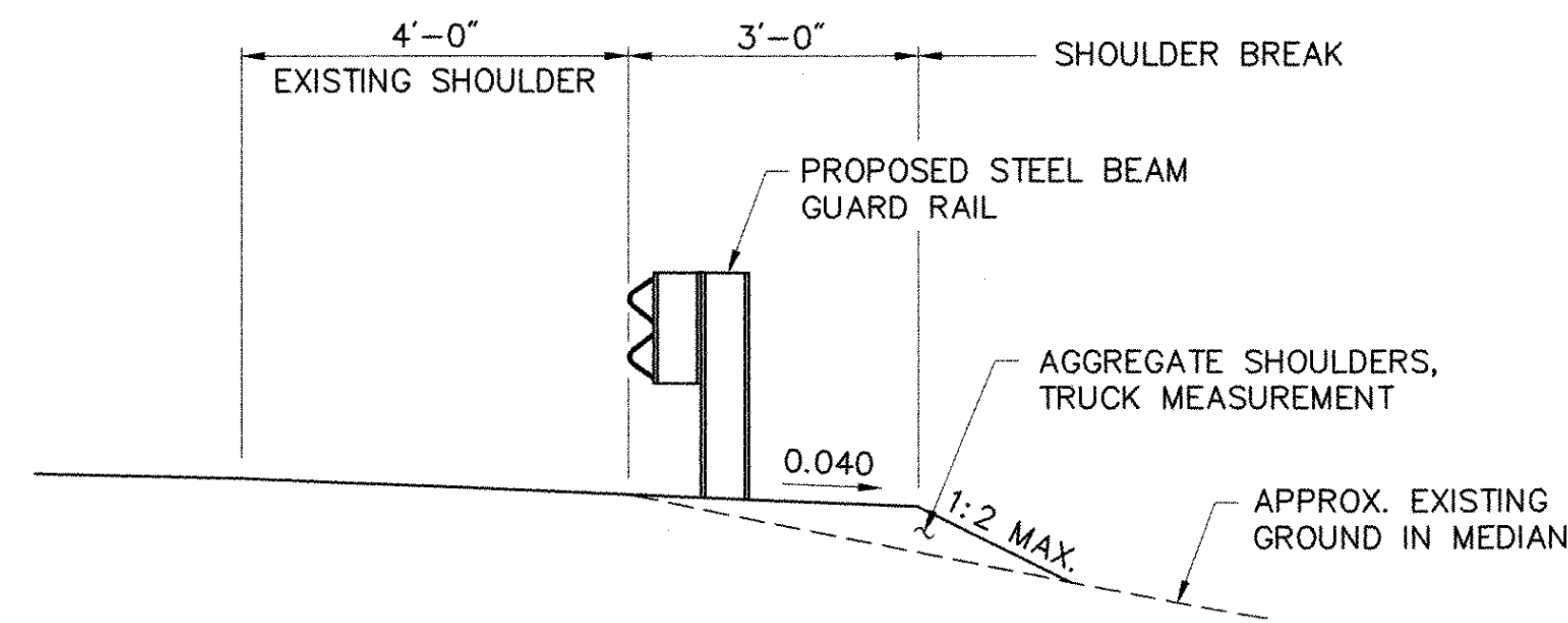
REMOVAL OF EXISTING RAILING TABLE

ABUTMENT	WINGWALL	LENGTH (FT.)
1	WEST	25
1	EAST	0
4	WEST	115
4	EAST	115



TERMINAL CONNECTOR DETAIL

N.T.S.



TYPICAL SHOULDER WIDENING DETAIL

SCALE: 1/2" = 1'-0"

NOTES:

- SEE SHEET 45 FOR GUARD RAIL APPROACHES LAYOUT.
- SEE SHEET 42 FOR SECTIONS B-B AND C-C.
- SEE SHEET 42 FOR BRIDGE BARRIER CURB END DETAILS.
- THE TERMINAL CONNECTOR AND ALL THE HARDWARE NECESSARY TO ATTACH THE APPROACH RAIL SECTIONS TO THE CONCRETE BRIDGE BARRIER CURB SHALL BE INCLUDED IN THE BID PRICE FOR GUARD RAIL APPROACH SECTION TYPE II (MOD.)

STATE OF VERMONT	
AGENCY OF TRANSPORTATION	
Town Of HARTFORD	Bridge No. 11N & 11S
Highway No. 1-89 NB & SB	Log Sta. Surv. Sta.
1-89 NB & SB OVER WHITE RIVER, VT 14 & NECR	
GUARD RAIL APPROACH SECTION TYPE II (MOD.)	
Designed By T.S. BRYANT	Drawn By B.J. MASSE
Checked By S.M. HODGDON	Bridge Design Supervisor C.D. BAKER
Date 9/98	Date 9/98
PROJECT HARTFORD	PROJECT NO. IR 089-1(13)
VHB Cad Filename 50699RL1	Bridge Sheet No. 41
Sheet 41 of 101	

VANASSE HANGEN BRUSTLIN, INC.