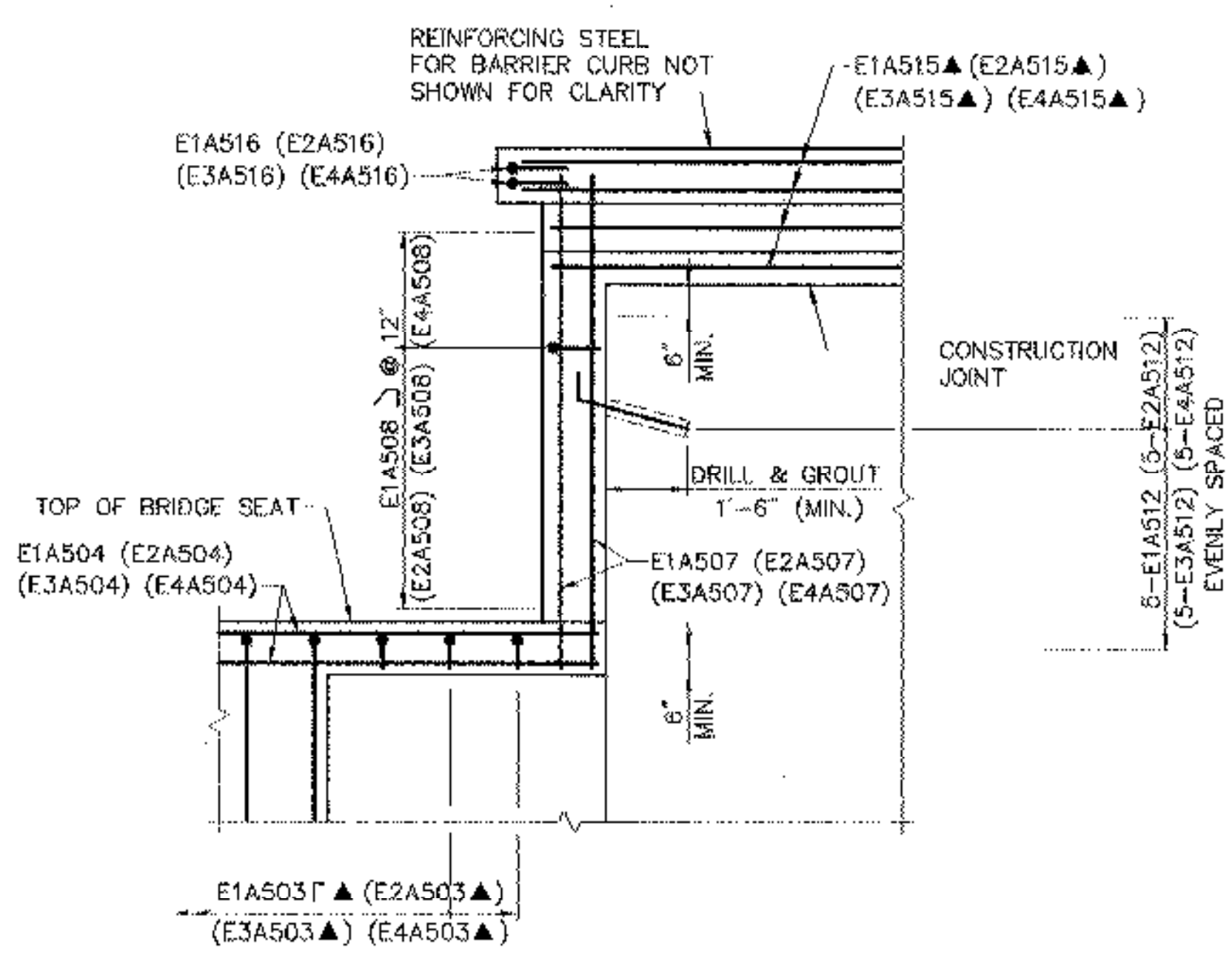
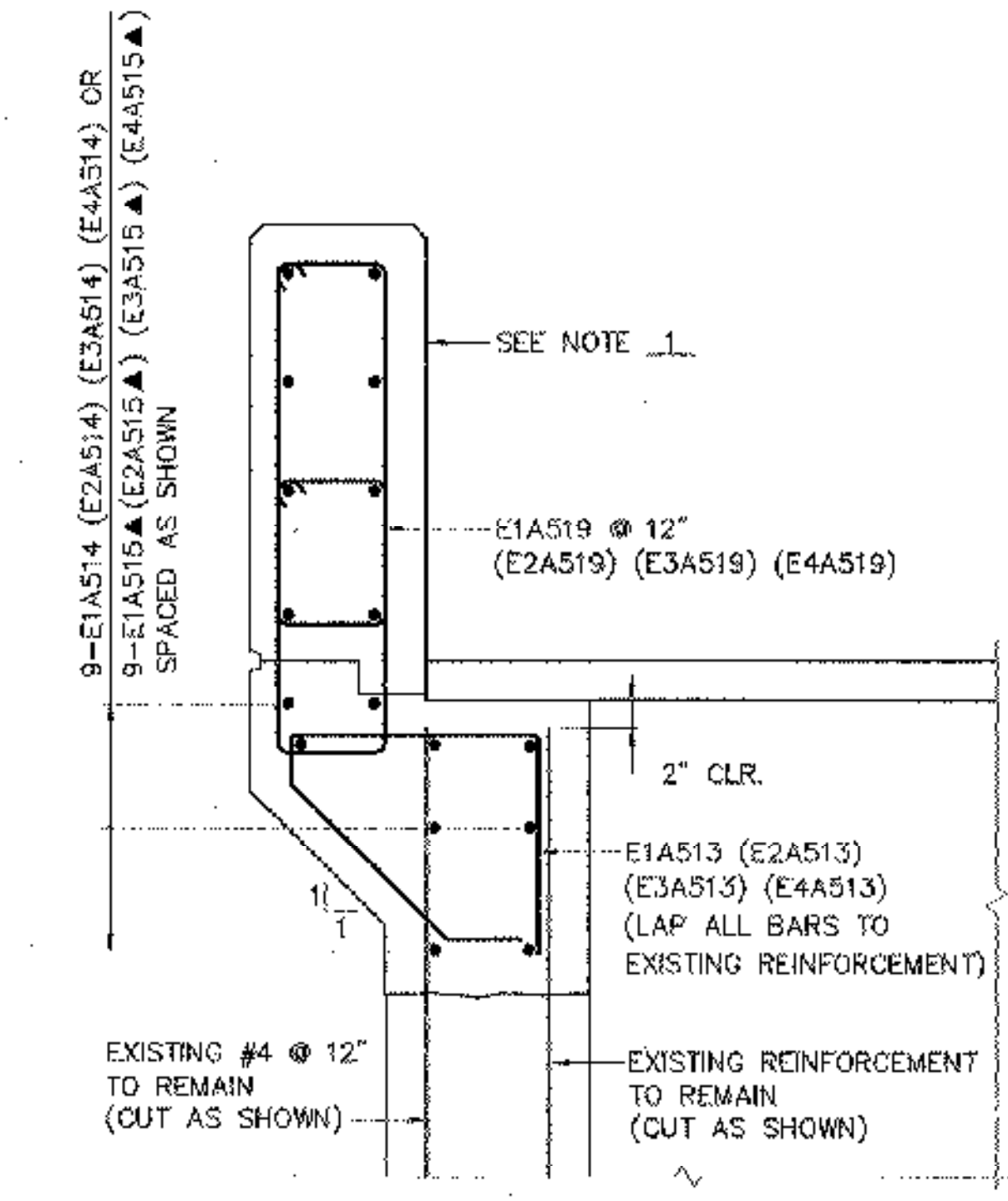


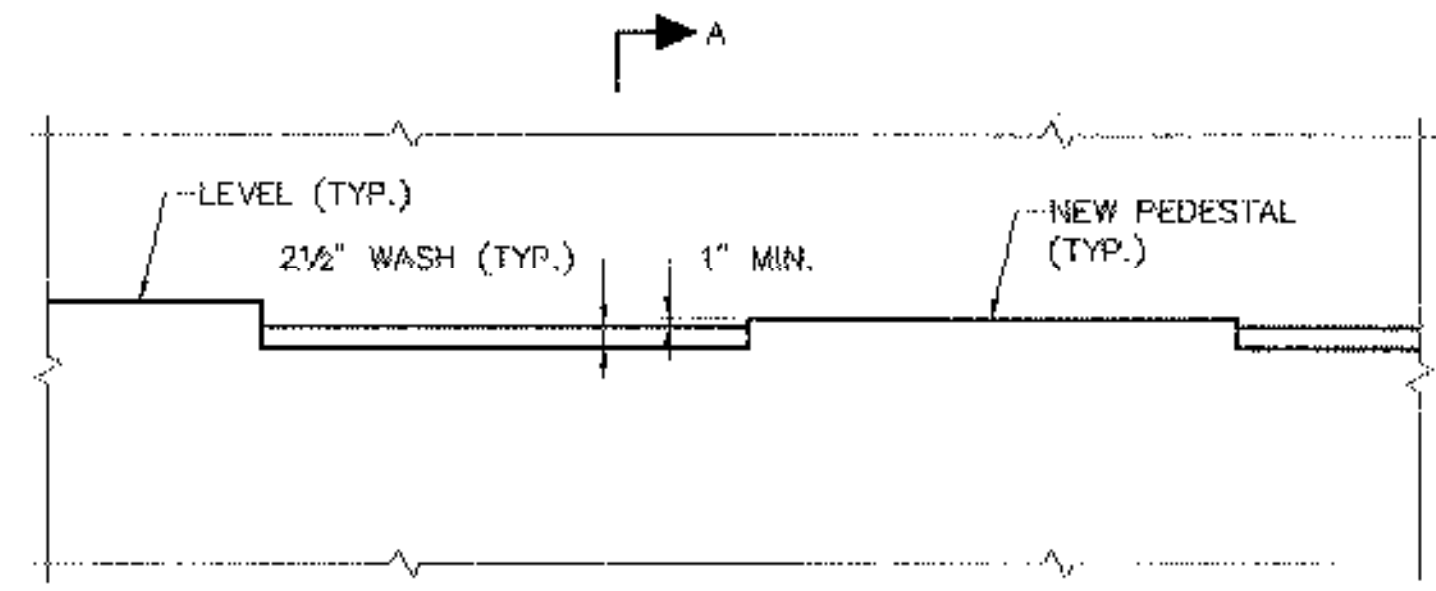
SECTION C-C
SCALE: 1" = 1'-0"



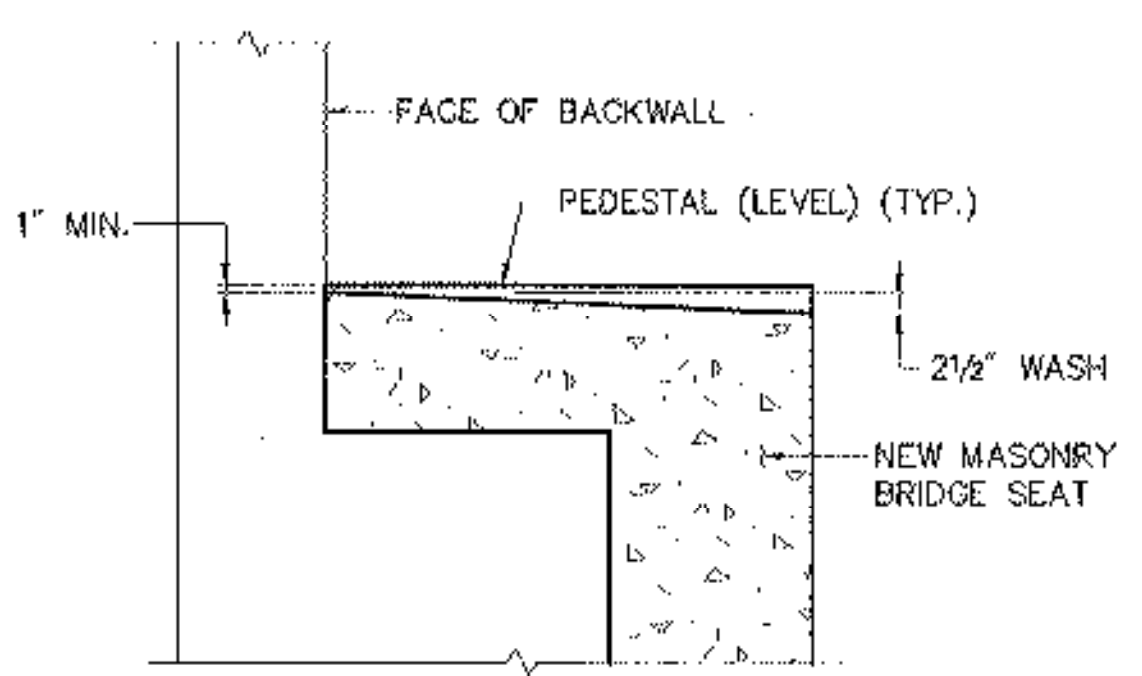
VIEW B-B
SCALE: 3/8" = 1'-0"



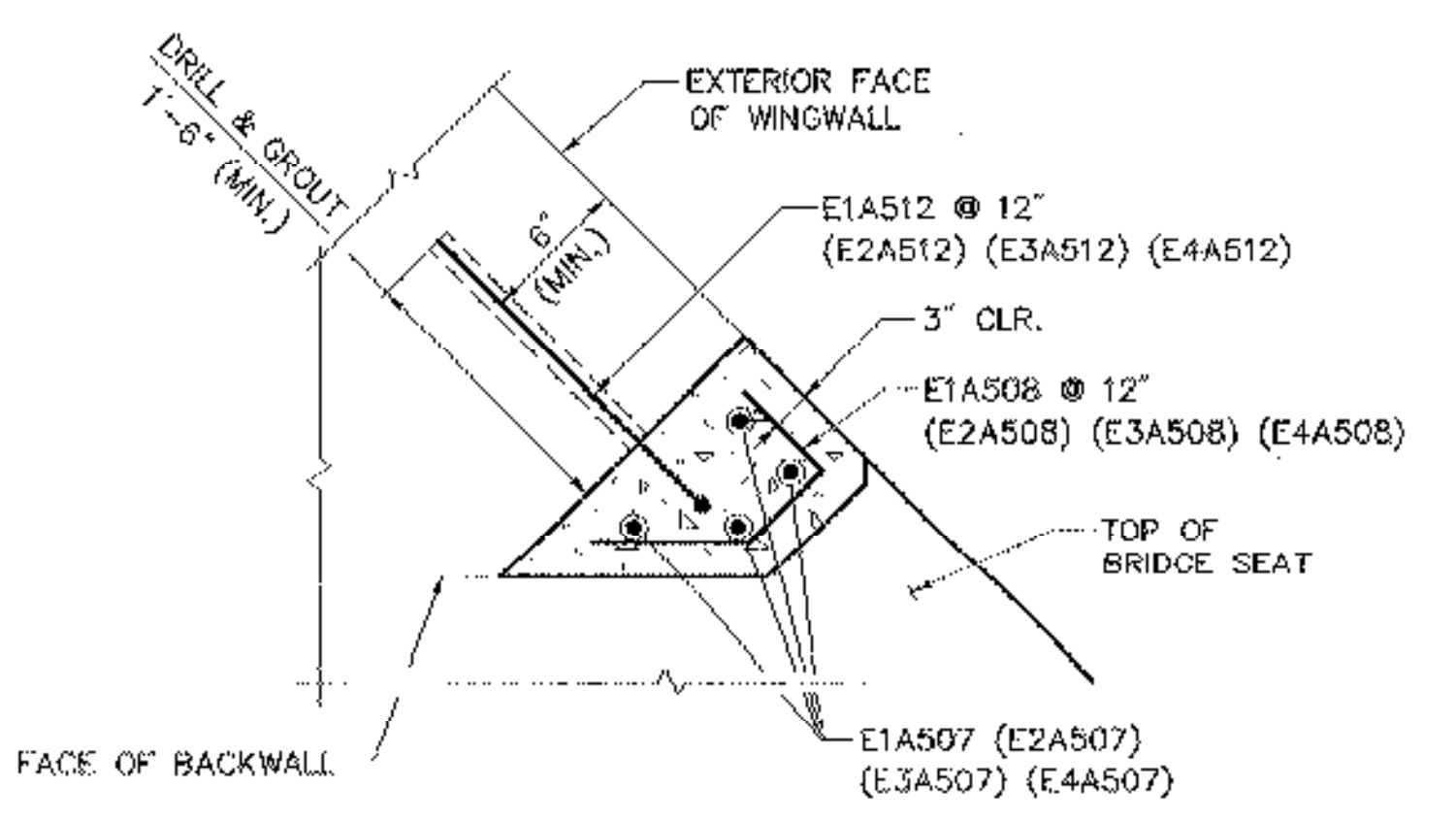
SECTION D-D
SCALE: 1" = 1'-0"



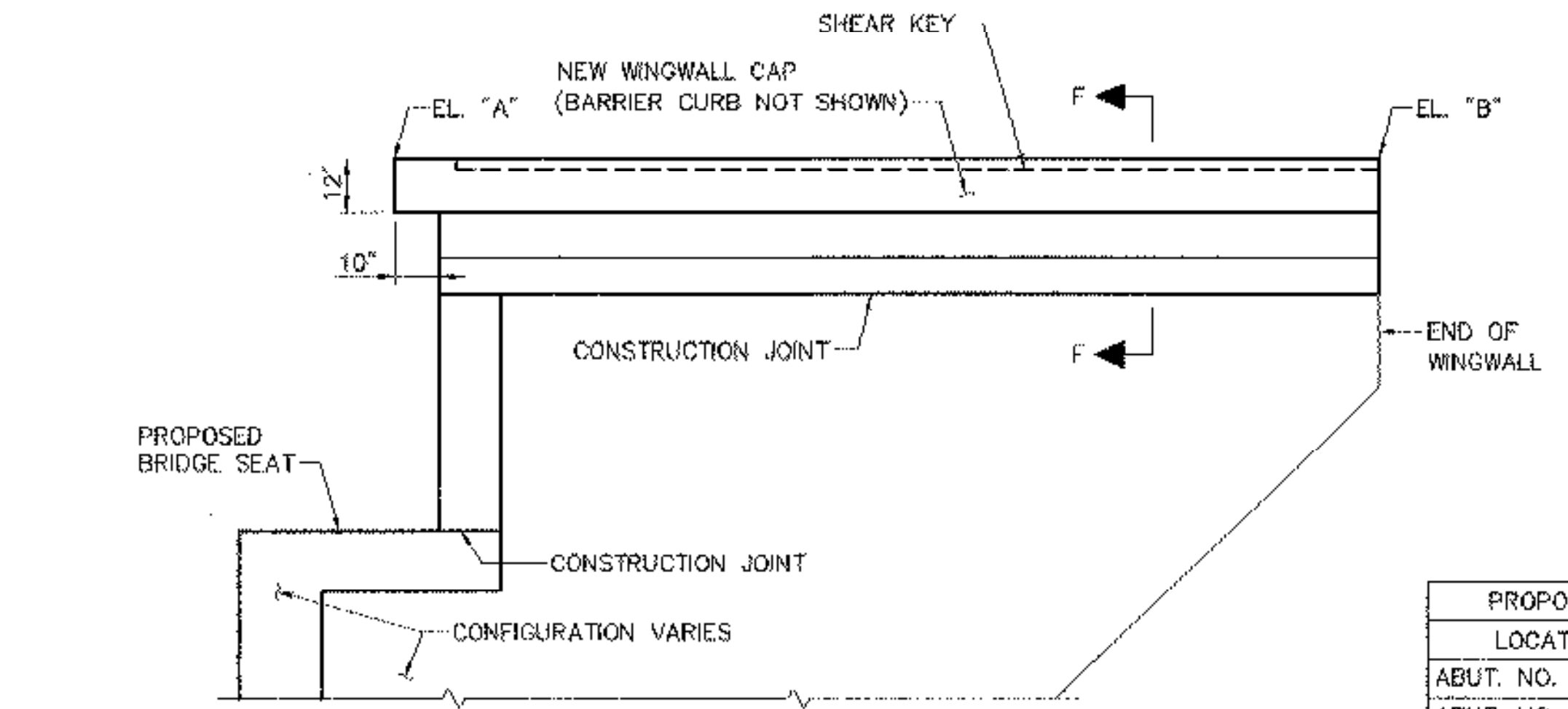
ELEVATION



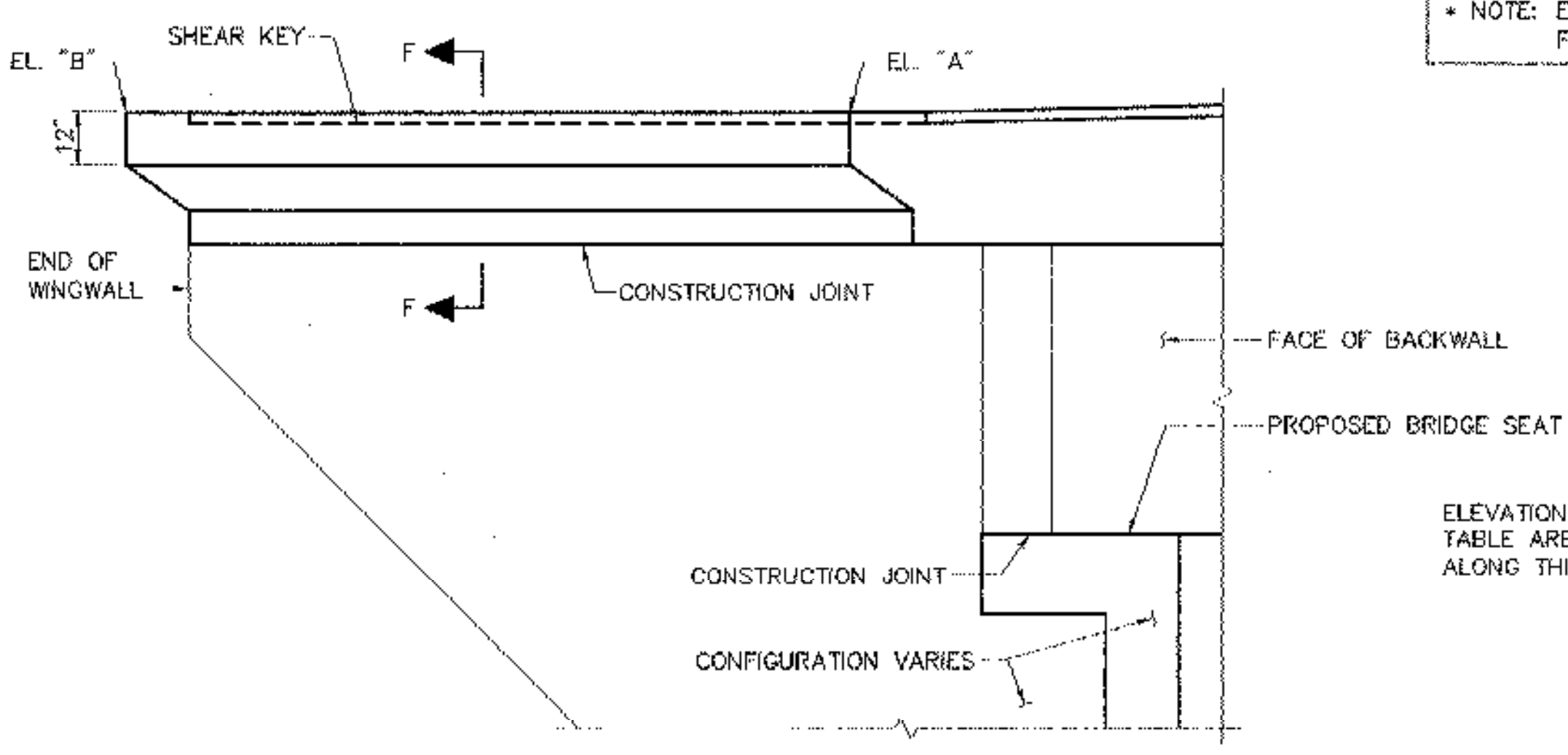
SECTION A-A
SCALE: 1/2" = 1'-0"



SECTION E-E
SCALE: 1" = 1'-0"



WINGWALL ELEVATION
N.T.S.



WINGWALL ELEVATION
N.T.S.

PROPOSED WINGWALL ELEVATION TABLE *		
LOCATION	EL. "A" (FT.)	EL. "B" (FT.)
ABUT. NO. 1 (EAST)	444.714.88	444.574.74
ABUT. NO. 1 (WEST)	444.94.5.11	444.774.94
ABUT. NO. 2 (EAST)	444.174.34	444.034.20
ABUT. NO. 2 (WEST)	444.404.57	444.234.40
ABUT. NO. 3 (EAST)	451.781.95	451.922.09
ABUT. NO. 3 (WEST)	452.022.18	452.122.29
ABUT. NO. 4 (EAST)	451.251.42	451.391.56
ABUT. NO. 4 (WEST)	451.491.65	451.591.76

* NOTE: ELEVATIONS SHOWN ARE ALONG THE FASCIA OF THE WINGWALL CAP.

SECTION F-F
N.T.S.

KEY:
N.F. -- NEAR FACE
F.F. -- FAR FACE
E.F. -- EACH FACE
▲ -- DENOTES BARS TO BE CUT IN FIELD

- NOTE:**
- FOR DETAILS OF BARRIER CURB REINFORCING SEE SHEET 42.
 - FOR LOCATION OF SECTIONS C-C, D-D, AND E-E AND VIEW B-B SEE SHEETS 29, 30, AND 31.

STATE OF VERMONT AGENCY OF TRANSPORTATION	
Town Of HARTFORD	Bridge No. 11N & 11S
Highway No. I-89 NB & SB	Log Sta.
I-89 NB & SB OVER WHITE RIVER, VT 14 & NECR	
TYPICAL ABUTMENT DETAILS (2 OF 2)	
Designed By S.M. HODGDON	Drawn By B.J. MASSE
Checked By T.S. BRYANT Date 9/98	Bridge Design Supervisor C.D. BAKER Date 9/98
PROJECT HARTFORD	PROJECT NO. IR 089-1(13)
VHB Cad Filename 50699DT2	
Bridge Sheet No. 33	Sheet 33 of 101

VANASSE HANGEN BRUSTLIN, INC.