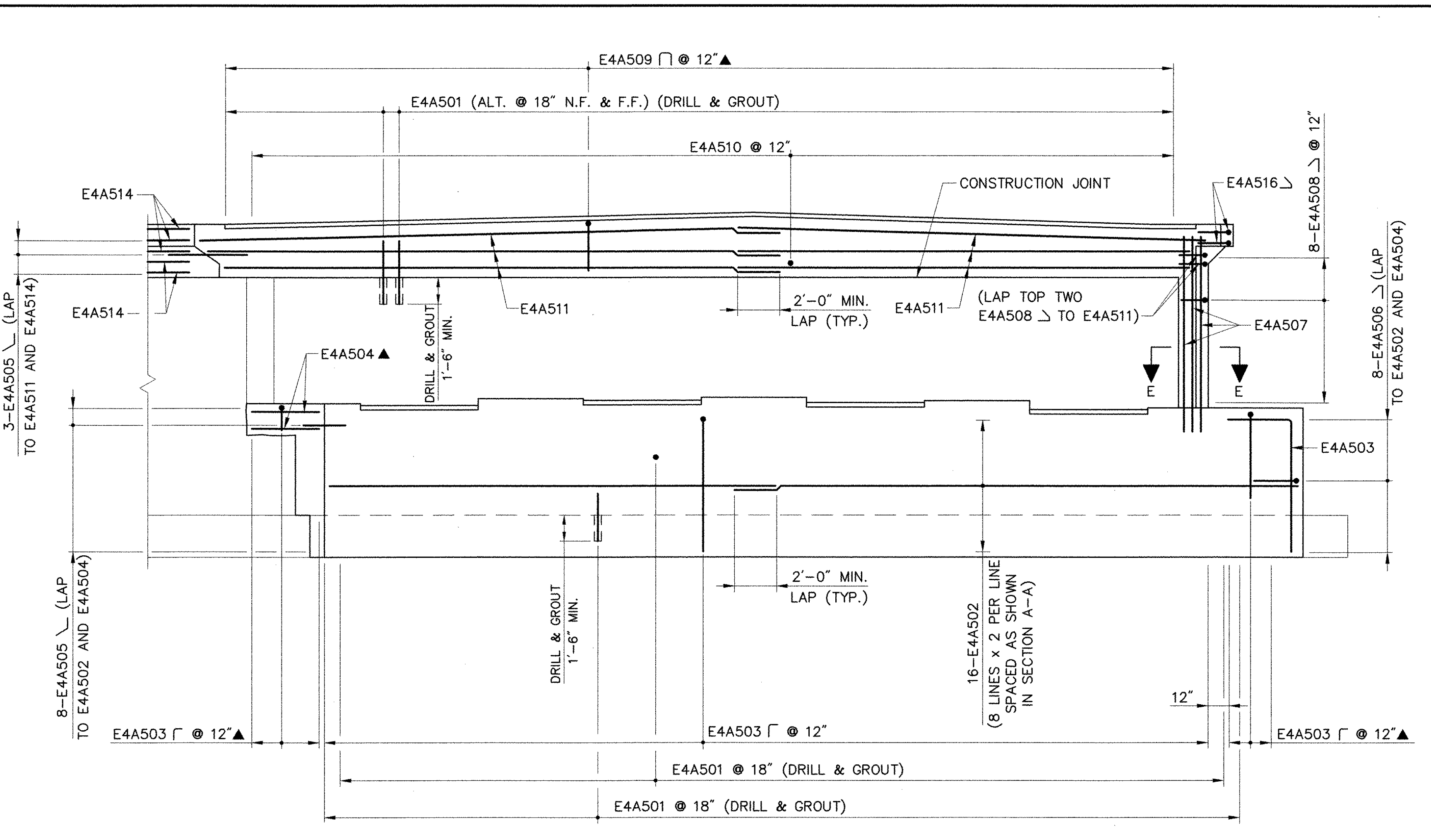
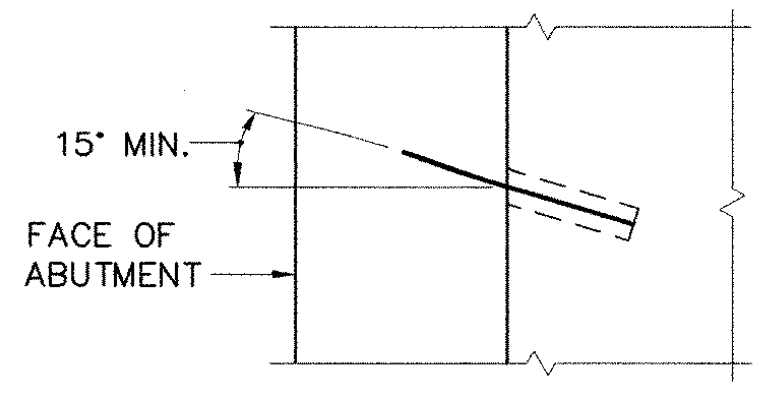


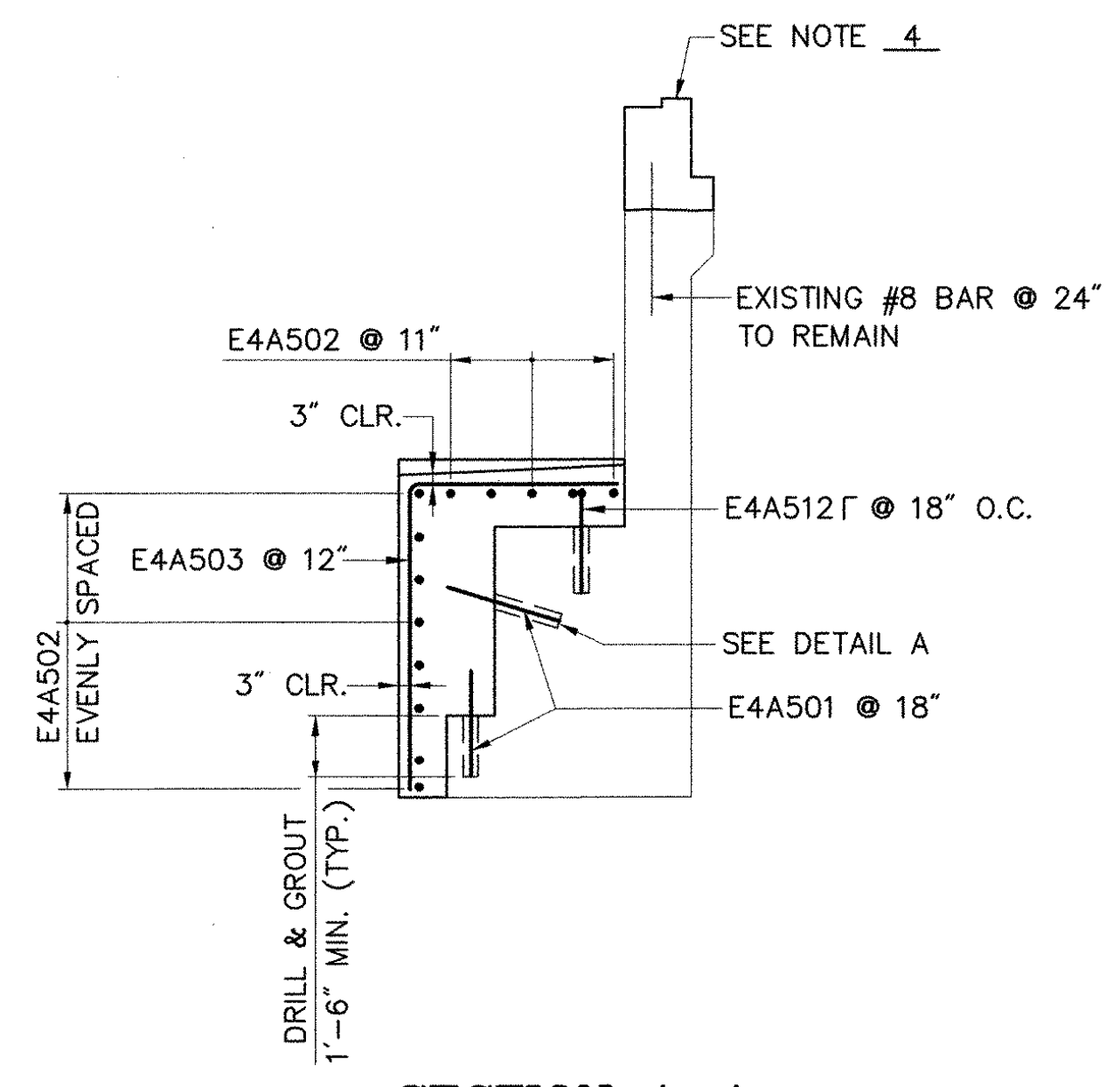
PLAN
SCALE: 1/4" = 1'-0"



ELEVATION (NORMAL TO BACKWALL)
SCALE: 1/4" = 1'-0"



DETAIL A
N.T.S.



SECTION A-A
SCALE: 1/4" = 1'-0"

KEY:
N.F. - NEAR FACE
F.F. - FAR FACE
E.F. - EACH FACE
▲ - DENOTES BARS TO BE CUT IN FIELD

- NOTES:**
- FOR TOP OF WINGWALL ELEVATIONS SEE TABLE ON SHEET 33.
 - FOR DETAILS OF VIEW B-B, SECTION C-C, SECTION D-D, AND SECTION E-E, SEE SHEET 33.
 - DRILLING AND GROUTING OF DOWELS SHALL BE PAID UNDER ITEM 507.16, "DRILLING AND GROUTING DOWELS".
 - FOR DETAILS OF REINFORCEMENT IN BACKWALL, SEE BACKWALL/ APPROACH SLAB REINFORCEMENT DETAIL ON SHEET 32.

STATE OF VERMONT AGENCY OF TRANSPORTATION			
Town Of	HARTFORD	Bridge No.	11N
Highway No.	I-89 NB	Log Sta.	
		Surv. Sta.	
I-89 NB OVER WHITE RIVER, VT 14 & NECR			
ABUTMENT 4 REINFORCEMENT			
Designed By	S.M. HODGDON	Drawn By	B.J. MASSE
Checked By	T.S. BRYANT	Date	9/98
		Bridge Design Supervisor	C.D. BAKER Date 9/98
PROJECT	HARTFORD	PROJECT NO.	IR 089-1(13)
VHB Cad Filename 50699A4R		Bridge Sheet No. 31	
		Sheet 31 of 101	

VANASSE HANGEN BRUSTLIN, INC.