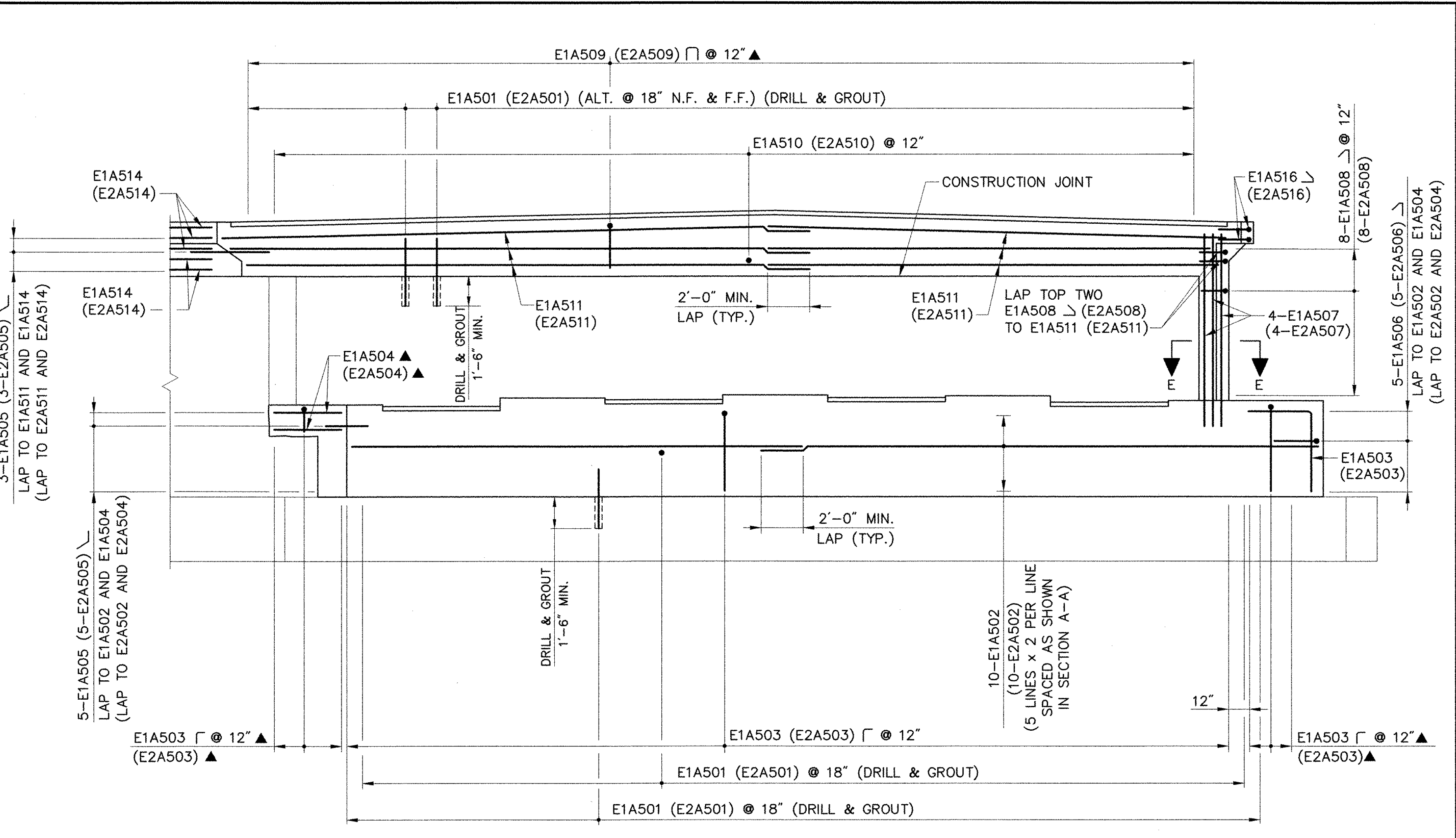


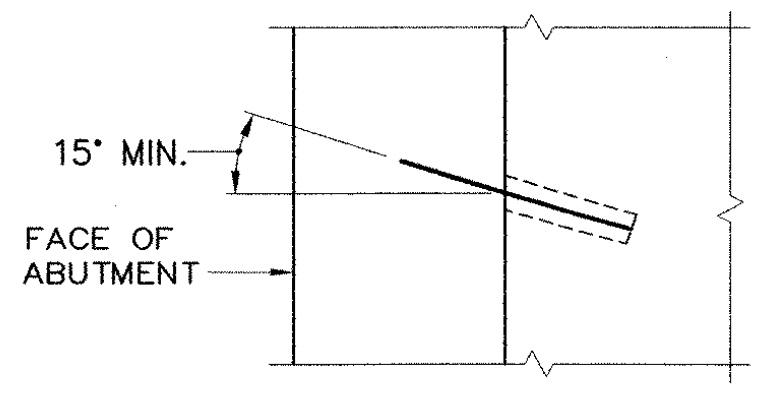
PLAN
SCALE: 1/4" = 1'-0"



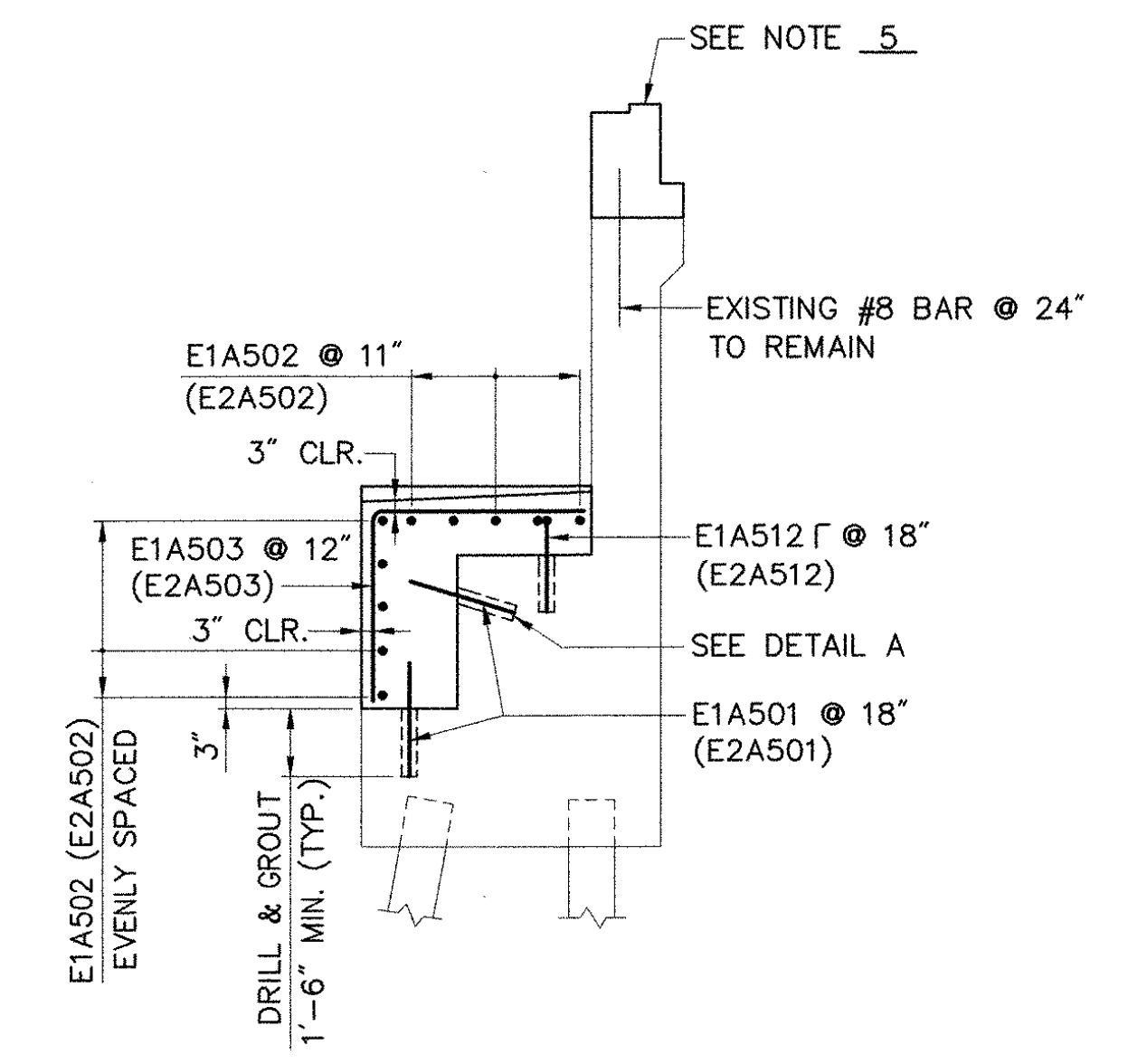
ELEVATION (NORMAL TO BACKWALL)
SCALE: 1/4" = 1'-0"

- KEY:**
- N.F. - NEAR FACE
 - F.F. - FAR FACE
 - E.F. - EACH FACE
 - ▲ - DENOTES BARS TO BE CUT IN FIELD

- NOTES:**
1. ABUTMENT 1 SHOWN, ABUTMENT 2 IS SIMILAR.
 2. FOR TOP OF WINGWALL ELEVATIONS SEE TABLE ON SHEET 33.
 3. FOR DETAILS OF VIEW B-B, SECTION C-C, SECTION D-D, AND SECTION E-E, SEE SHEET 33.
 4. DRILLING AND GROUTING OF DOWELS SHALL BE PAID UNDER ITEM 507.16, "DRILLING AND GROUTING DOWELS".
 5. FOR DETAILS OF REINFORCEMENT IN BACKWALL, SEE BACKWALL/ APPROACH SLAB REINFORCEMENT DETAIL ON SHEET 32.



DETAIL A
N.T.S.



SECTION A-A
SCALE: 1/4" = 1'-0"

VANASSE HANGEN BRUSTLIN, INC.

STATE OF VERMONT AGENCY OF TRANSPORTATION			
Town Of	HARTFORD	Bridge No.	11N & 11S
Highway No.	1-89 NB & SB	Log Sta.	
		Surv. Sta.	
1-89 NB & SB OVER WHITE RIVER, VT 14 & NECR			
ABUTMENT 1 & 2 REINFORCEMENT			
Designed By	S.M. HODGDON	Drawn By	B.J. MASSE
Checked By	Date	Bridge Design Supervisor	
T.S. BRYANT	9/98	C.D. BAKER	Date 9/98
PROJECT	HARTFORD	PROJECT NO.	IR 089-1(13)
VHB Cad Filename 50699A1R		Bridge Sheet No. 29	
		Sheet 29 of 101	