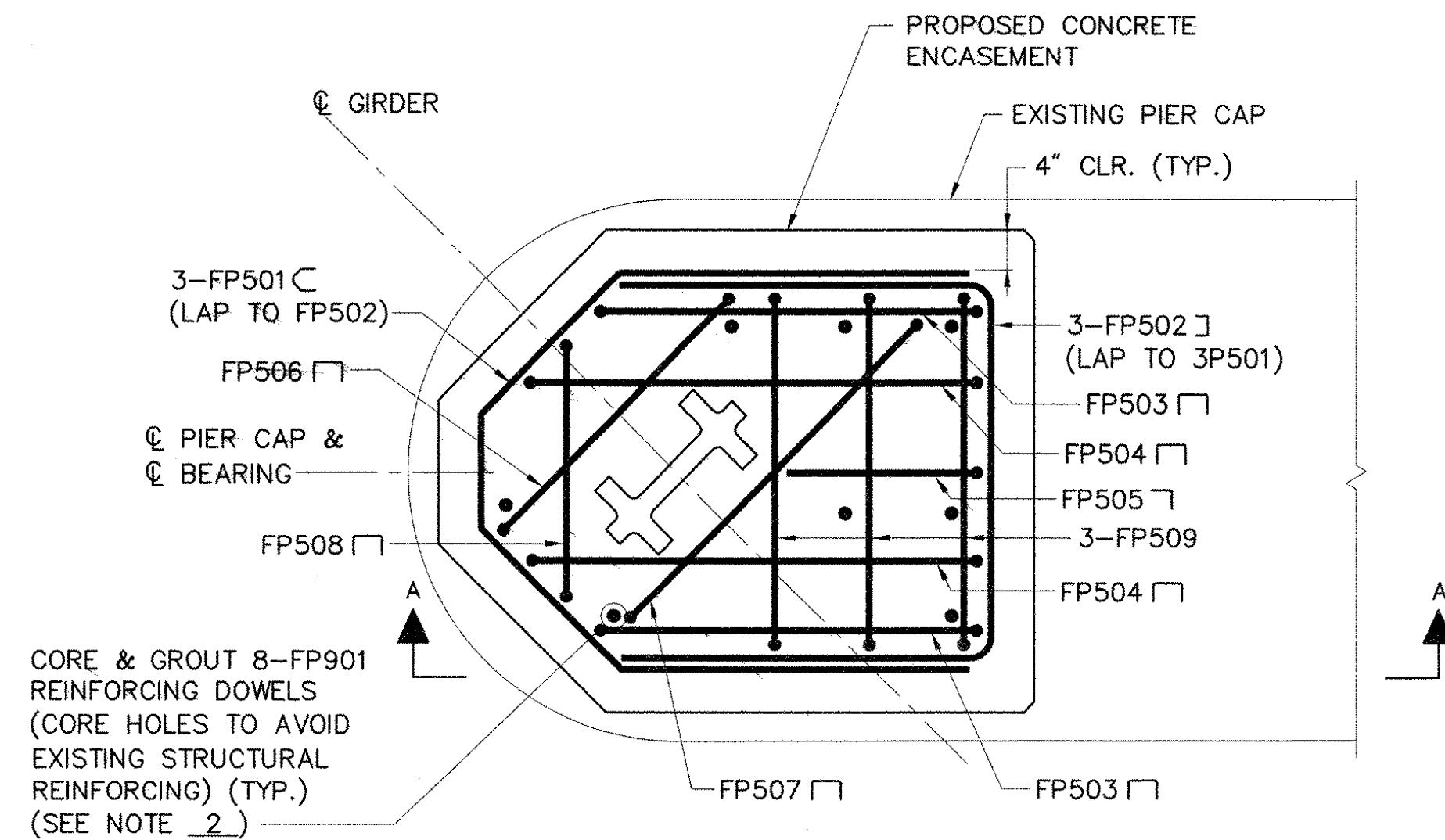


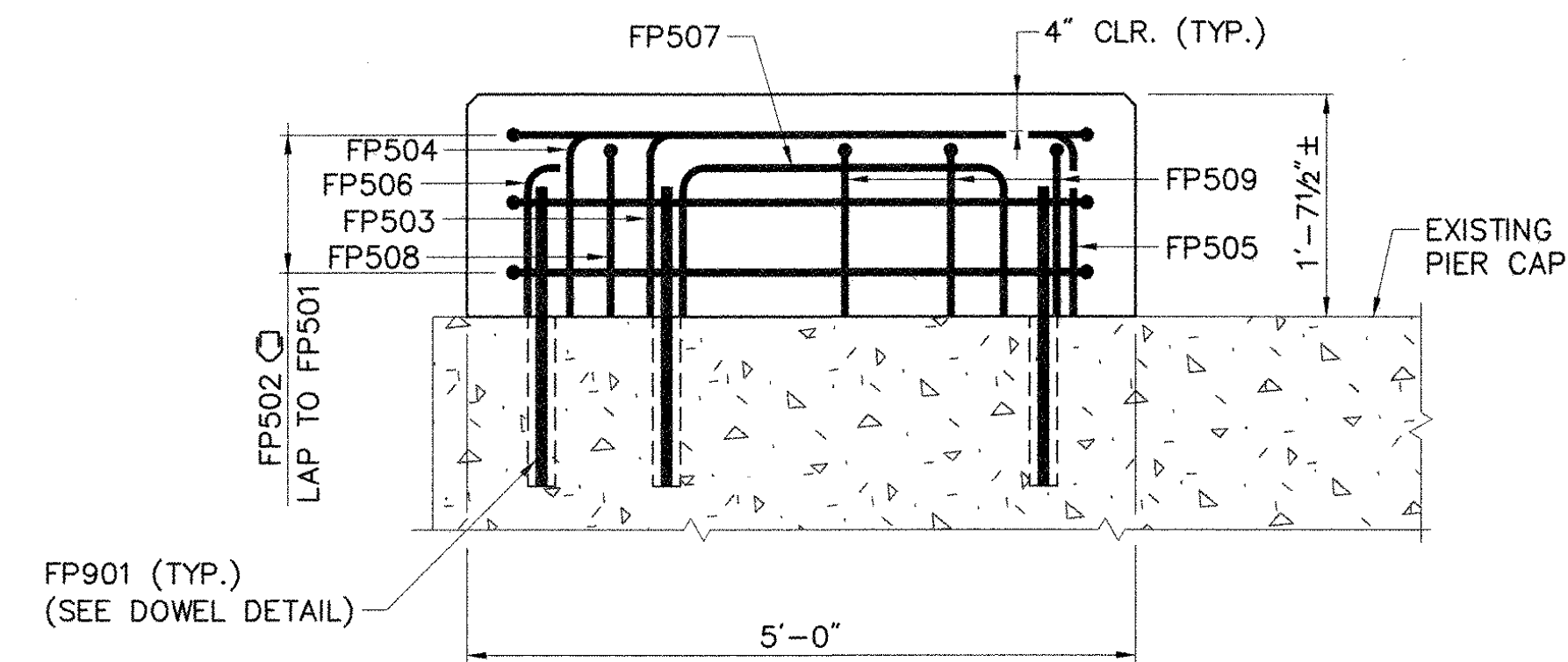
MASONRY PLAN



REINFORCING PLAN

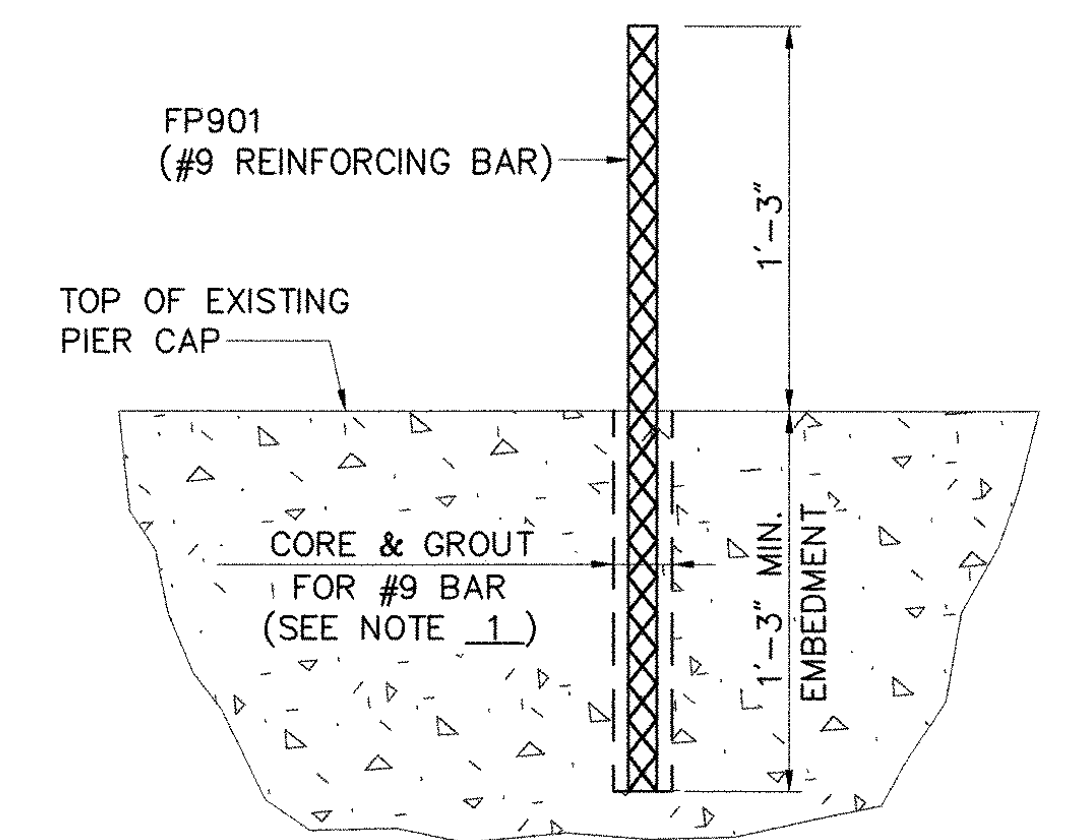
TYPICAL CONCRETE ENCASEMENT DETAILS AT FASCIA GIRDERS

SCALE: 3/4" = 1'-0"



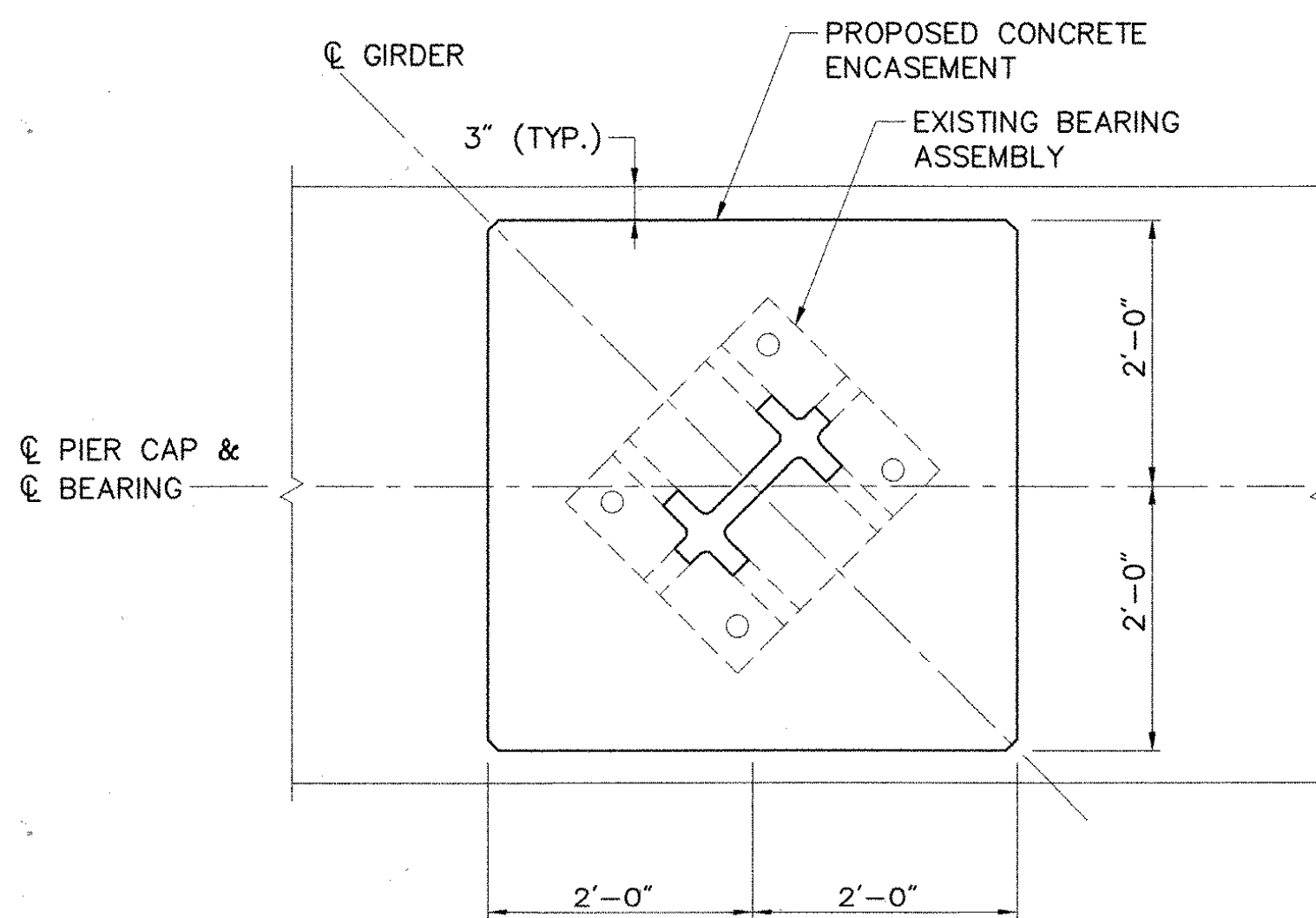
* EXISTING BEARING ASSEMBLY NOT SHOWN FOR CLARITY.

SECTION A-A*

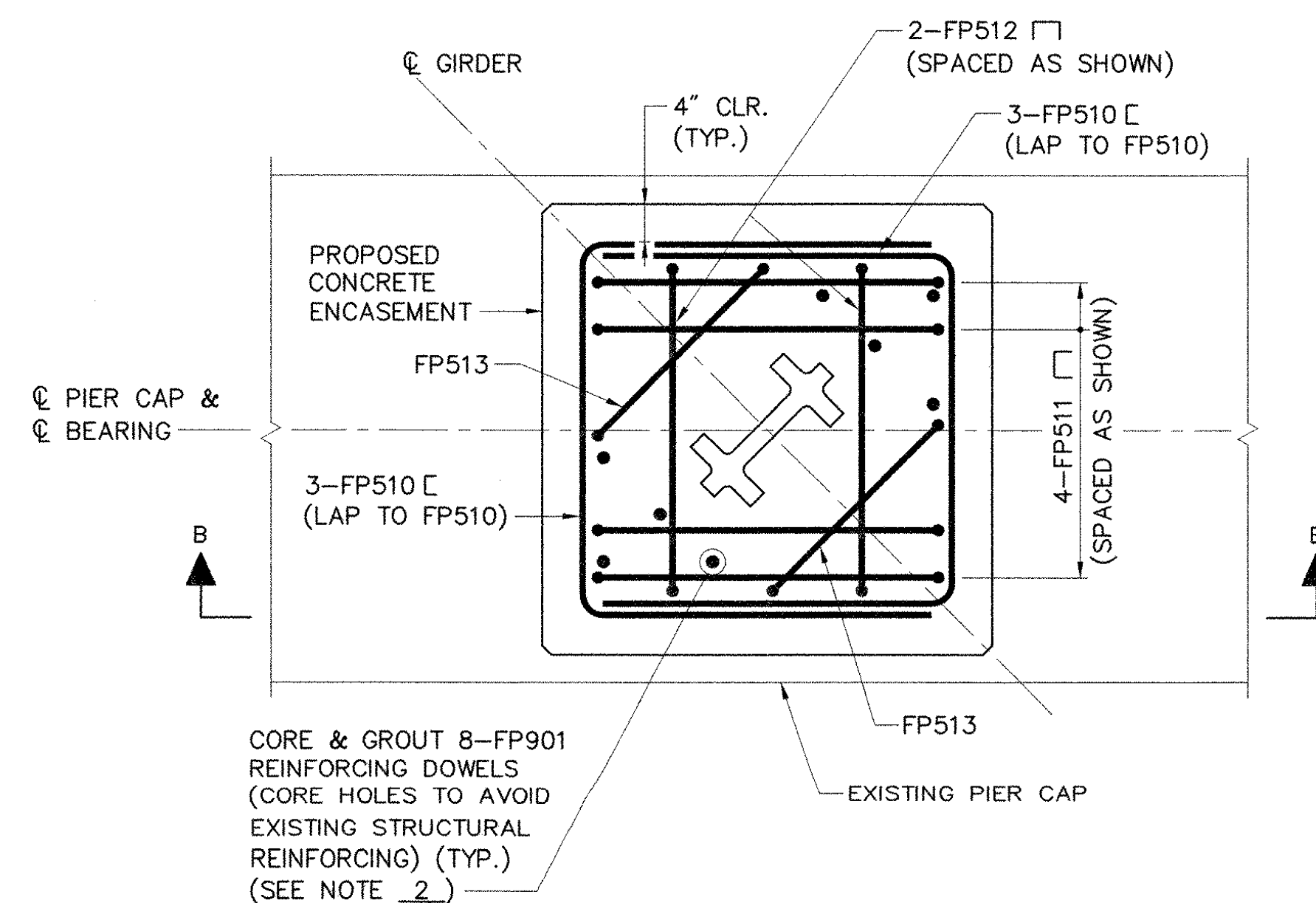


DOWEL DETAIL

SCALE: 1 1/2" = 1'-0"



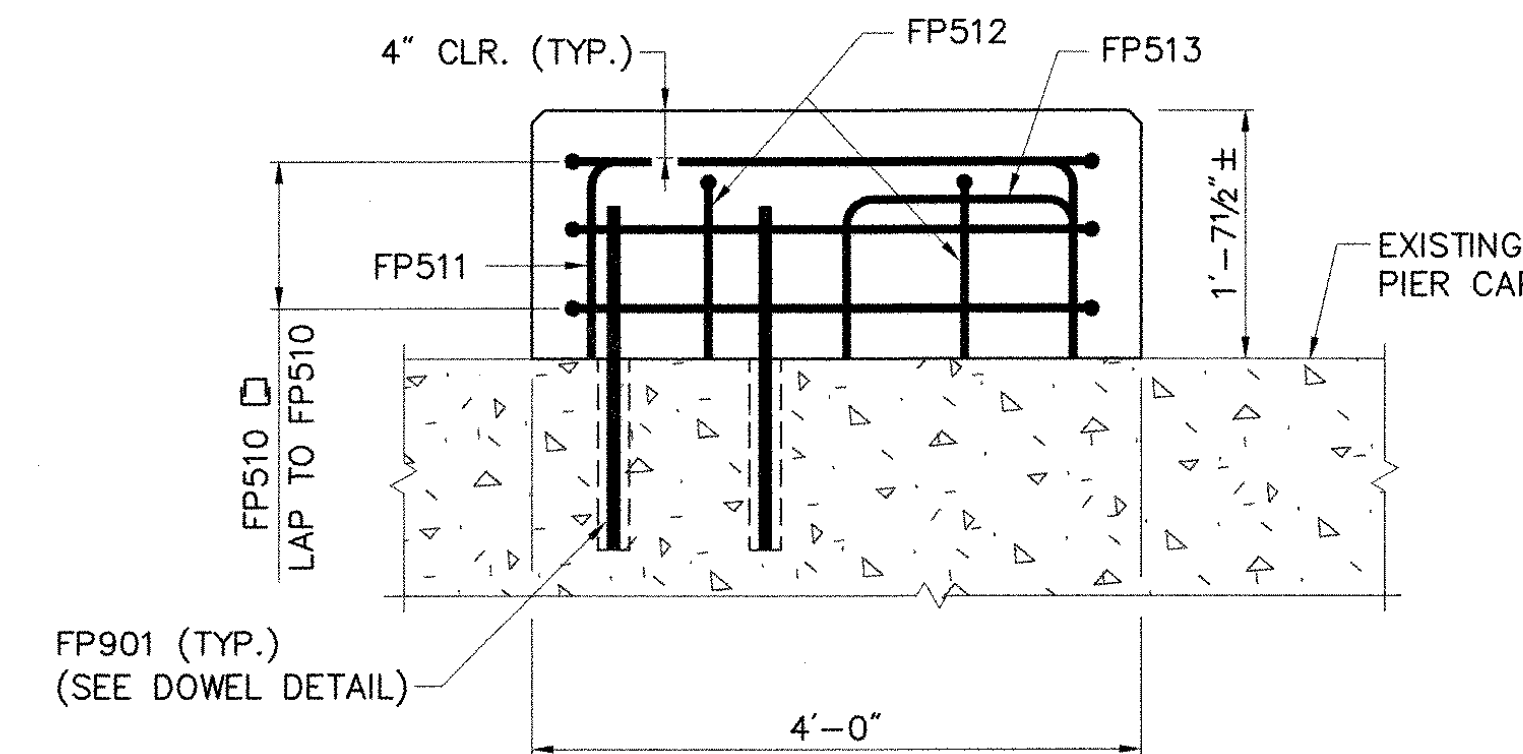
MASONRY PLAN



REINFORCING PLAN

TYPICAL CONCRETE ENCASEMENT DETAILS AT INTERIOR GIRDERS

SCALE: 3/4" = 1'-0"



* EXISTING BEARING ASSEMBLY NOT SHOWN FOR CLARITY.

SECTION B-B*

SHEET NOTES:

1. SEE FIXED BEARING RETROFIT NOTES ON SHEET 20.
2. DOWELS SHALL BE SPACED NOT LESS THAN 6" FROM A MASONRY EDGE OR ANOTHER REINFORCING DOWEL.
3. REINFORCING BARS SHOWN ARE FOR ONE ENCASEMENT ONLY.

STATE OF VERMONT AGENCY OF TRANSPORTATION			
Town Of	HARTFORD	Bridge No.	11N & 11S
Highway No.	1-89 NB & SB	Log Sta.	
		Surv. Sta.	
1-89 NB & SB OVER WHITE RIVER, VT 14 & NECR			
FIXED BEARING RETROFIT DETAILS (2 OF 2)			
Designed By	S.M. HODGDON	Drawn By	B.J. MASSE
Checked By	T.S. BRYANT	Date	9/98
		Bridge Design Supervisor	C.D. BAKER Date 9/98
PROJECT	HARTFORD	PROJECT NO.	IR 089-1(13)
VHB Cad Filename	50699FB2	Bridge Sheet No.	21
		Sheet	21 of 101

VANASSE HANGEN BRUSTLIN, INC.