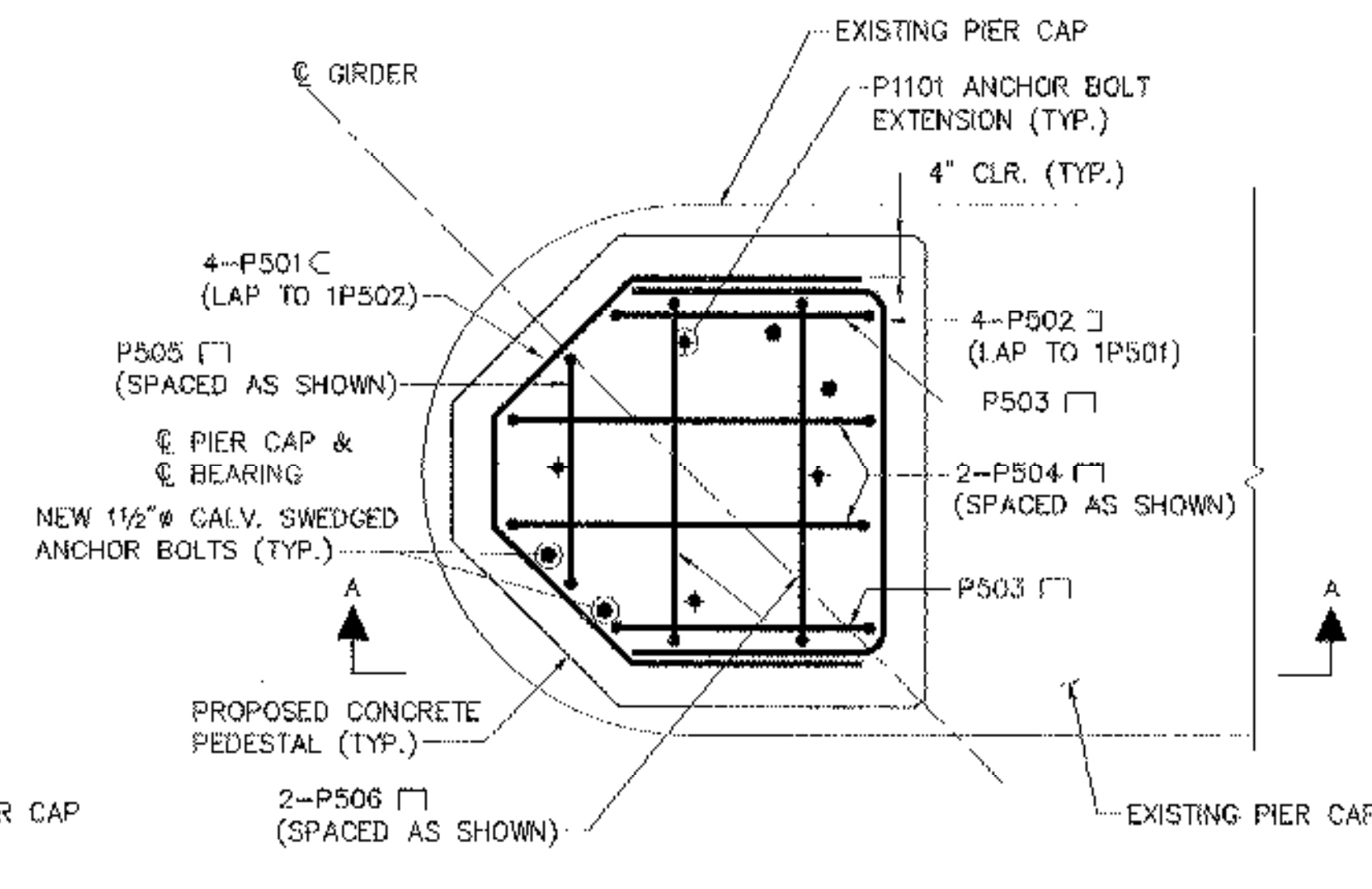


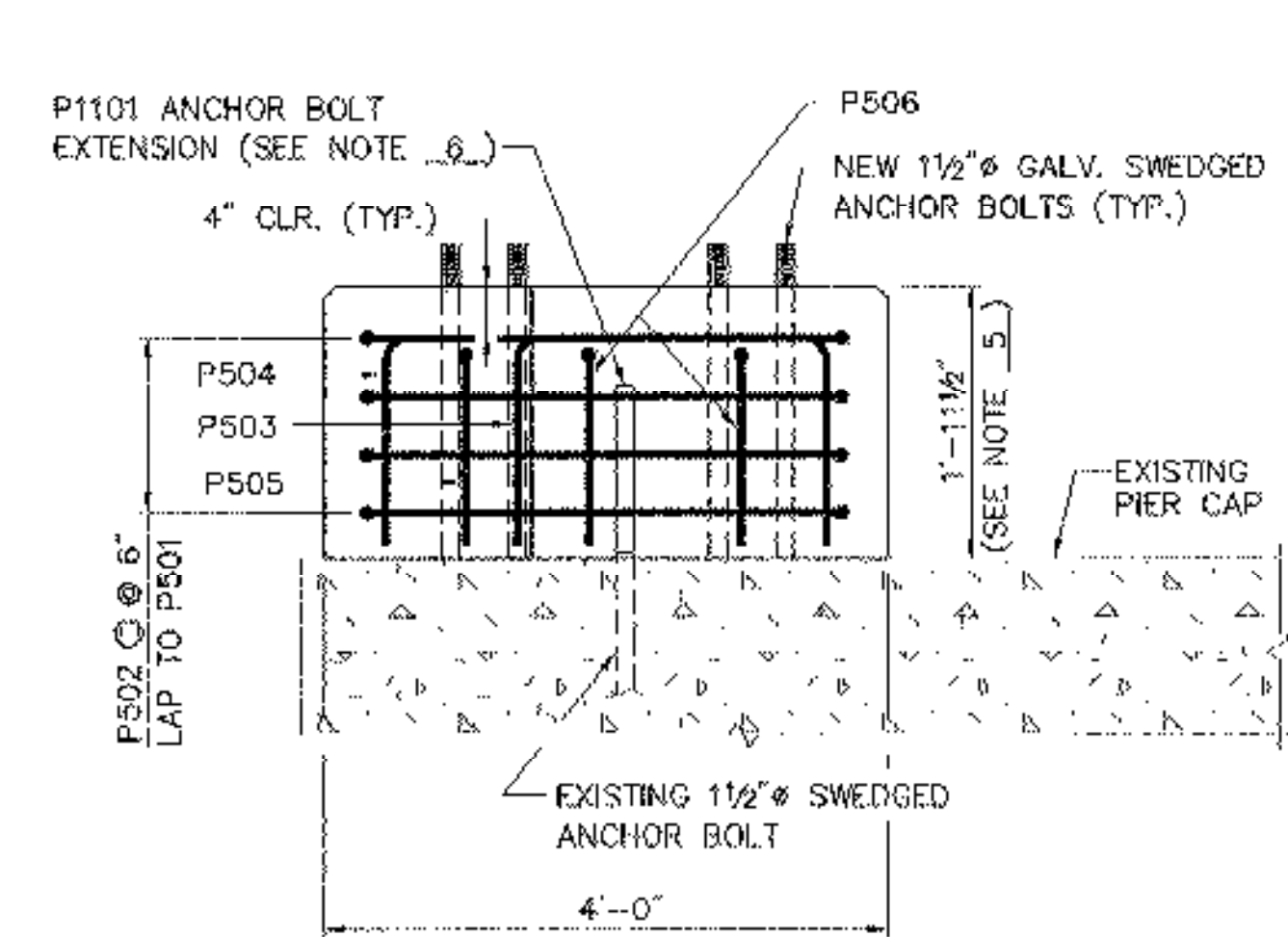
MASONRY PLAN



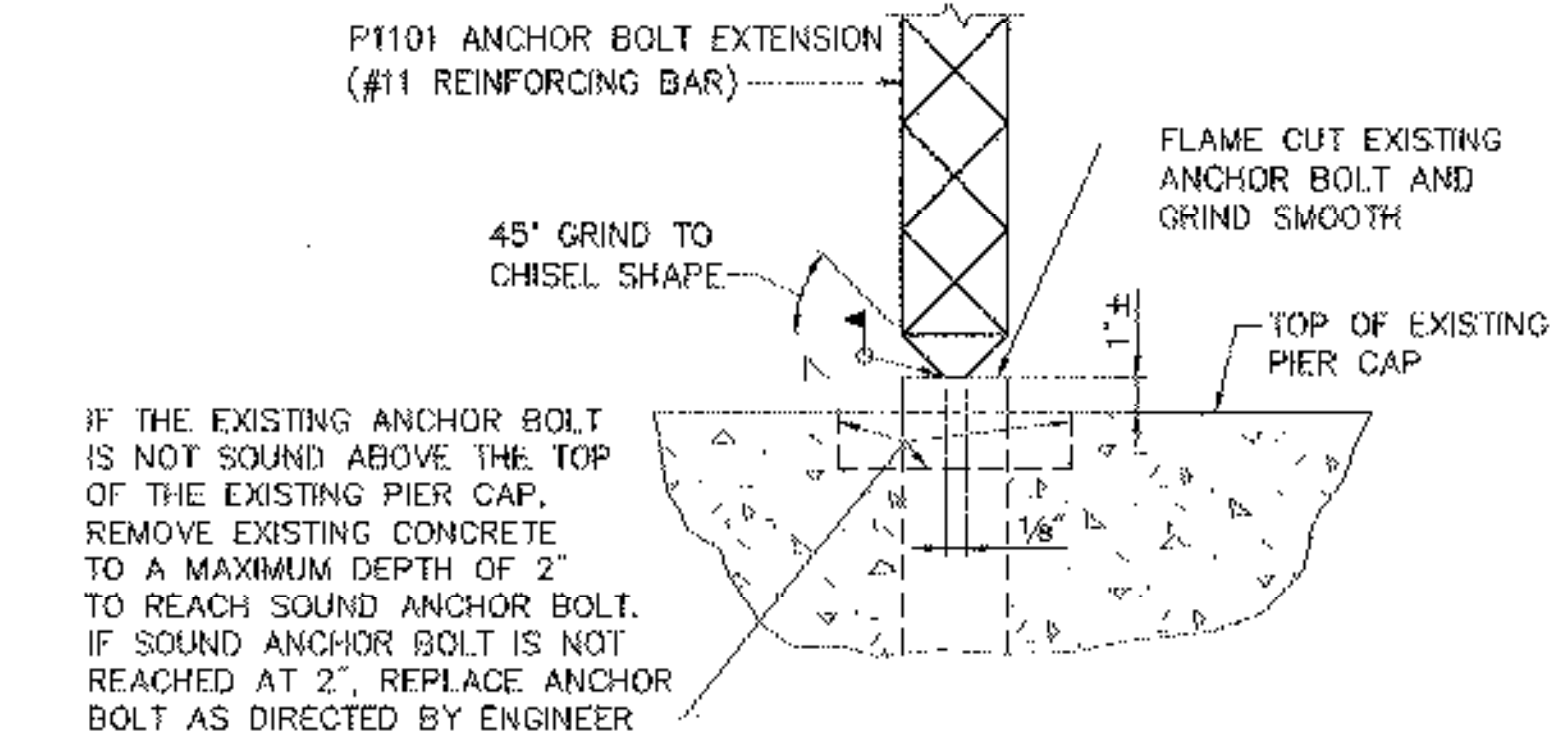
REINFORCING PLAN

TYPICAL FASCIA GIRDER PEDESTAL AT EXPANSION PIERS

SCALE: 3/4" = 1'-0"



SECTION A-A



WELDED ANCHOR BOLT EXTENSION DETAIL

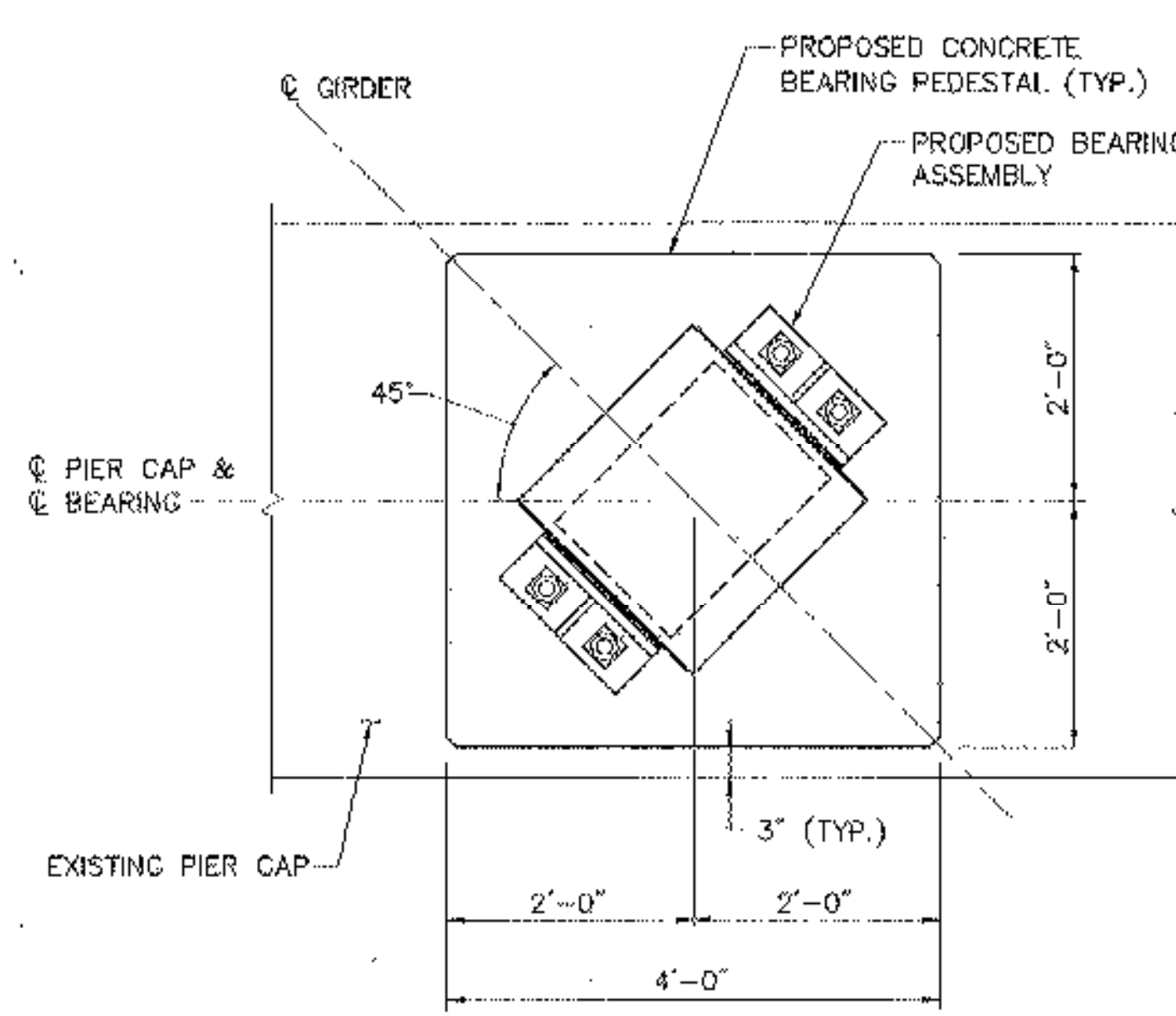
N.T.S.

NOTES:

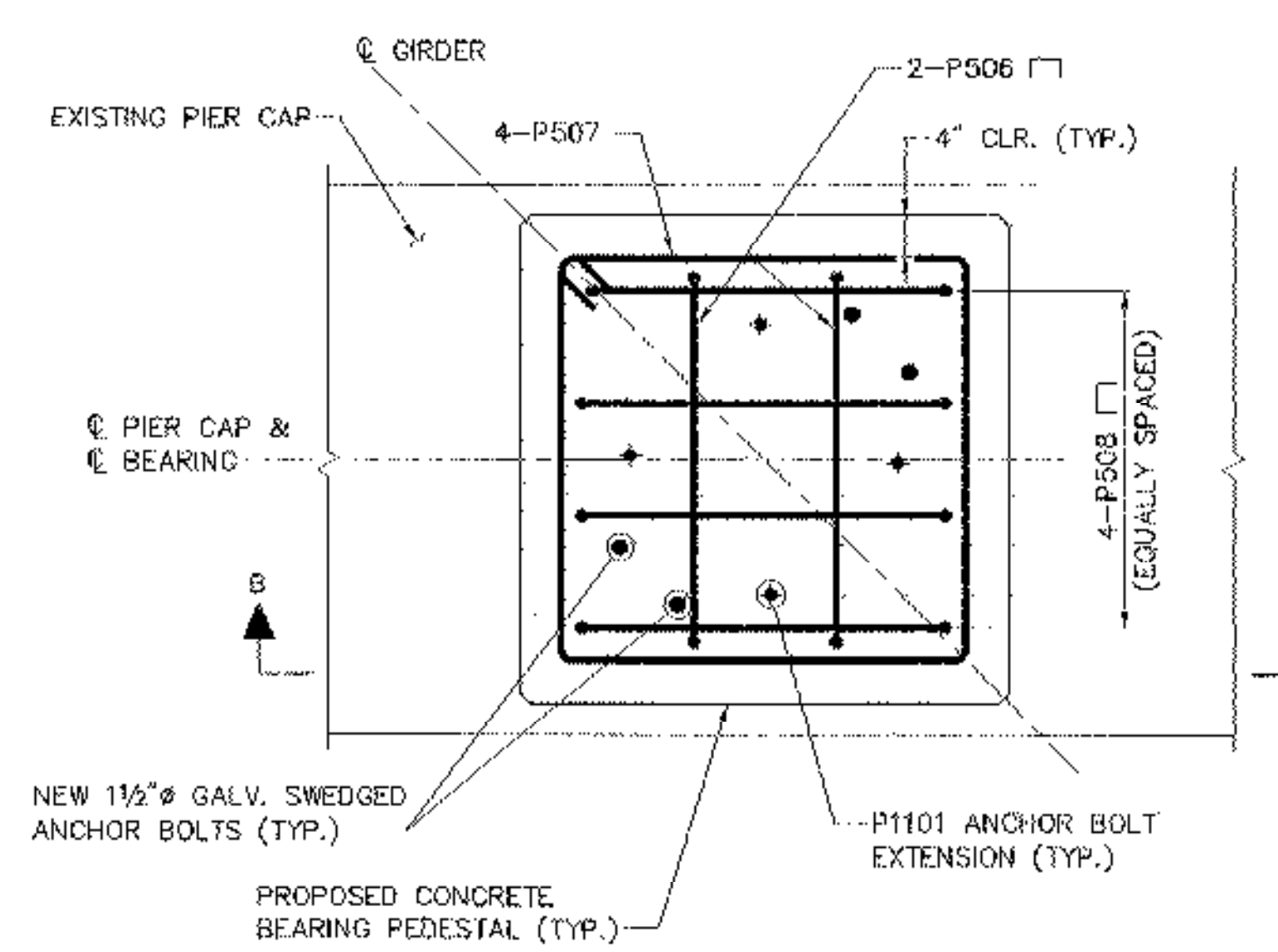
- THE DETAILS ON THIS SHEET APPLY TO ALL PIERS ON BOTH BRIDGES EXCEPT FOR THE FIXED PIERS, PIERS 5 AND 6.
- ALL CONCRETE IN THE PEDESTALS SHALL BE ITEM 501.22, "CONCRETE, CLASS A".
- THE BAR MARKS SHOWN ON THIS SHEET APPLY TO ALL EXPANSION PIERS.
- SEE SHEET 18 FOR DETAILS OF PROPOSED EXPANSION BEARINGS.
- THE PROPOSED PEDESTAL HEIGHT SHOWN ON THIS SHEET WAS CALCULATED AS FOLLOWS BASED ON THE EXISTING BEARING HEIGHT SHOWN IN THE ORIGINAL DESIGN PLANS:

32.5"	EXISTING BEARING AND 0.5" PAD HEIGHT
- 8.0"	ELASTOMERIC BEARING PAD HEIGHT
1.5625"	+ 4.3125" BEVELED SOLE PLATE THICKNESS AT BRG. @
+ 0.217"	+ 0.217" INSTANTANEOUS COMPRESSIVE DEFLECTION OF BEARING PAD DUE TO DEAD LOADS.
<hr/>	
23.4'	26.15'

THE CONTRACTOR SHALL DETERMINE THE EXISTING BOTTOM OF GIRDER AND TOP OF PIER CAP ELEVATIONS AT THE EXPANSION PIERS BY FIELD MEASUREMENTS AND/OR SURVEY. THE PROPOSED PEDESTAL HEIGHT SHOWN SHALL BE ADJUSTED AS NECESSARY TO MAINTAIN THE EXISTING BOTTOM OF GIRDER ELEVATIONS AT EACH PIER. THE BEARING MANUFACTURER'S ESTIMATED INSTANTANEOUS COMPRESSIVE DEFLECTION OF THE ELASTOMERIC BEARING PADS DUE TO DL, AS PROVIDED ON THE BEARING SHOP DRAWINGS, SHALL BE USED WHEN CALCULATING THE PEDESTAL HEIGHT INSTEAD OF THE VALUE SHOWN ABOVE.
- ALL OF THE EXISTING ANCHOR BOLTS SHALL BE EXTENDED. THE EXISTING ANCHOR BOLTS SHALL BE INSPECTED JOINTLY BY THE CONTRACTOR AND ENGINEER. ANCHOR BOLTS WHICH ARE IN GOOD CONDITION SHALL BE EXTENDED TO A MINIMUM OF 15 INCHES ABOVE THE EXISTING PIER CAP USING AN APPROVED MECHANICAL COUPLER THAT DEVELOPS 150% OF THE ANCHOR BOLT STRENGTH, OR BY WELDING AS SHOWN IN THE WELDED ANCHOR BOLT EXTENSION DETAIL ON THIS SHEET, AT THE CONTRACTOR'S OPTION. ANCHOR BOLTS EXHIBITING SIGNIFICANT SECTION LOSS SHALL BE CUT OFF BELOW THE AREA OF SECTION LOSS AND EXTENDED TO A MINIMUM OF 15 INCHES ABOVE THE EXISTING PIER CAP.
- ALL COSTS FOR EXTENDING EXISTING ANCHOR BOLTS BY EITHER METHOD SHALL BE SUBSIDIARY TO ITEM 531.10, "BEARING DEVICE ASSEMBLY (STEEL REINFORCED ELASTOMERIC)".



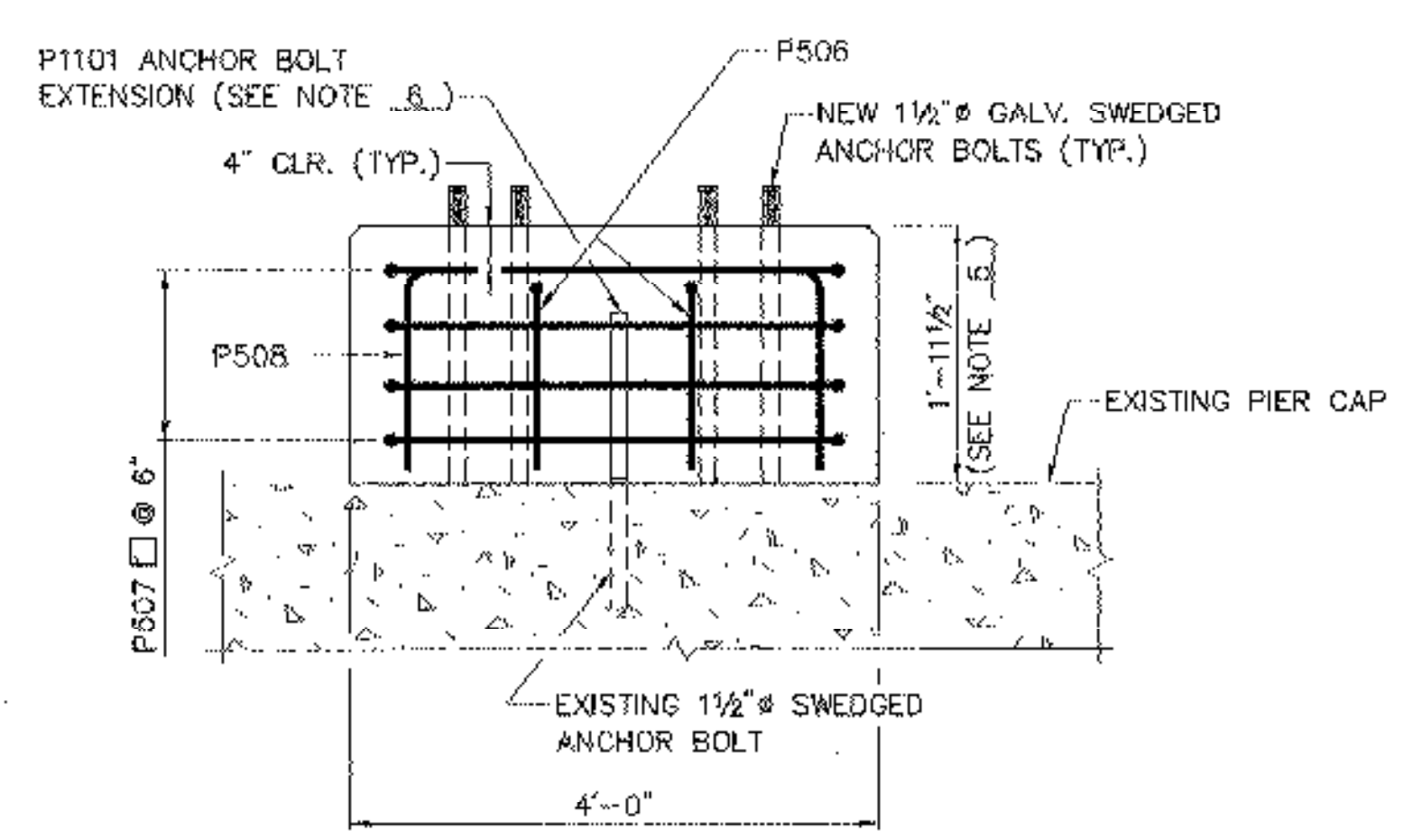
MASONRY PLAN



REINFORCING PLAN

TYPICAL INTERIOR GIRDER PEDESTAL AT EXPANSION PIERS

SCALE: 3/4" = 1'-0"



SECTION B-B

VANASSE HANGEN BRUSTLIN, INC.

STATE OF VERMONT	
AGENCY OF TRANSPORTATION	
Town Of HARTFORD	Bridge No. 11N & 11S
Highway No. 1-89 NB & SB	Log Sta.
1-89 NB & SB OVER WHITE RIVER, VT 14 & NECR	
EXPANSION BEARING DETAILS (2 OF 2)	
Designed By S.M. HODGDON	Drawn By B.J. MASSE
Checked By T.S. BRYANT	Date 9/98
Bridge Design Supervisor C.D. BAKER	Date 9/98
PROJECT HARTFORD	PROJECT NO. IR 089-1(13)
VHB Cad Filename 50699PCM	
Bridge Sheet No. 19	Sheet 19 of 101