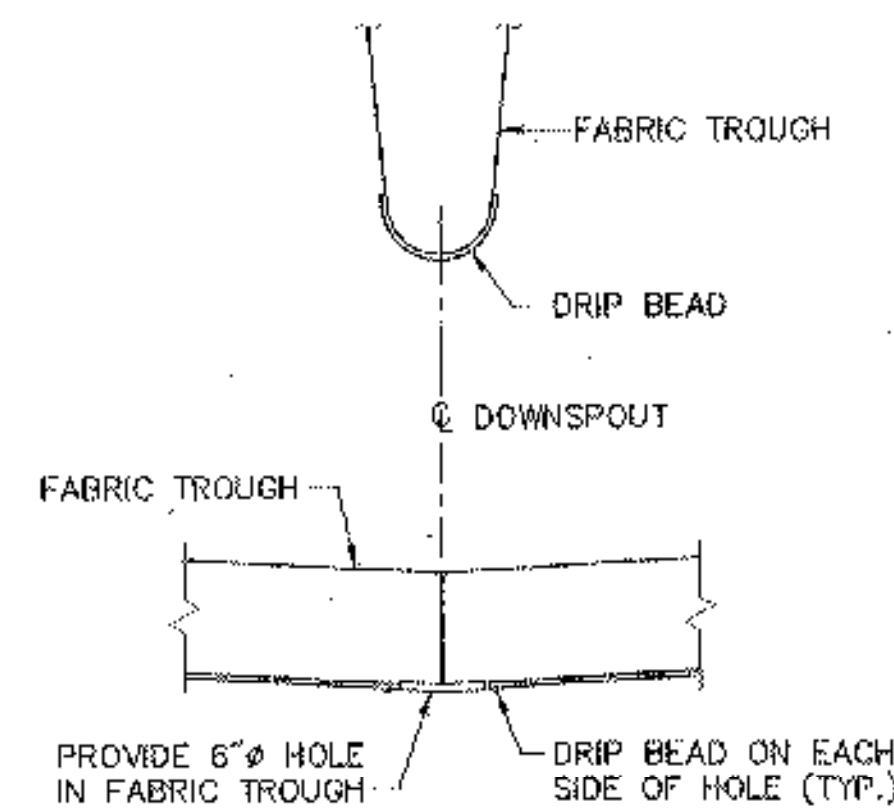
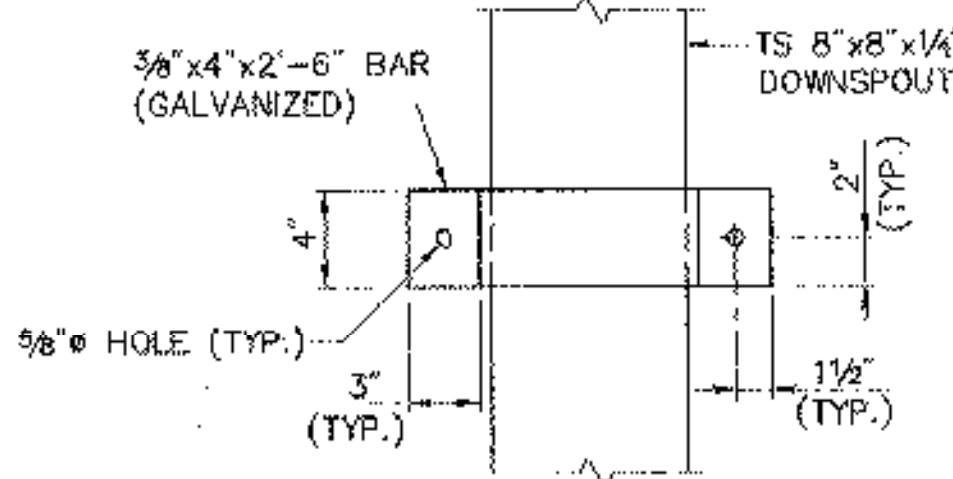


**FRONT ELEVATION**  
SCALE: 3/8" = 1'-0"

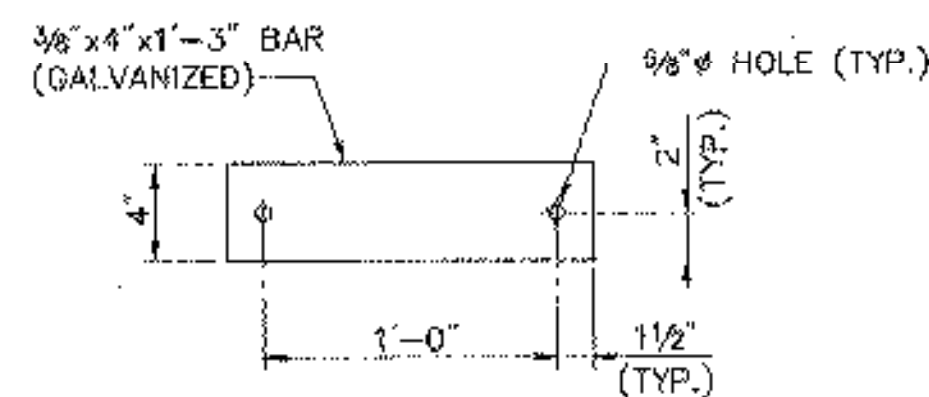


**DRIP BEAD DETAIL**  
N.T.S.

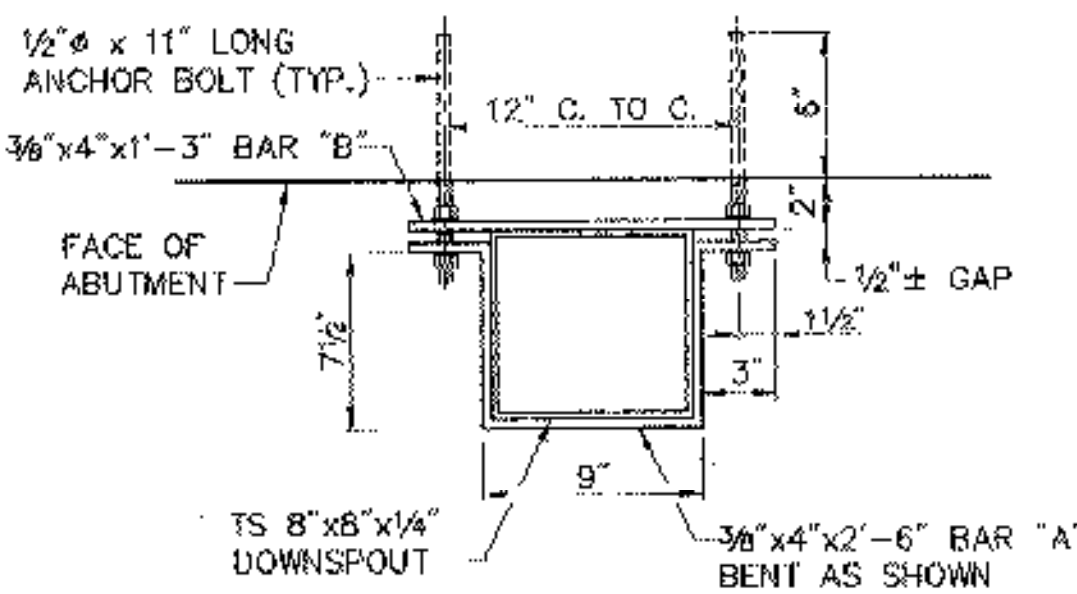
A DRIp BEAD OF POLYURETHANE JOINT SEALER IS TO BE APPLIED TO THE UNDERSIDE OF THE FABRIC TROUGH AS SHOWN WITH THE COST TO BE SUBSIDIARY TO ITEM 516.10, "BRIDGE EXPANSION JOINT".



**ELEVATION BAR "A"**

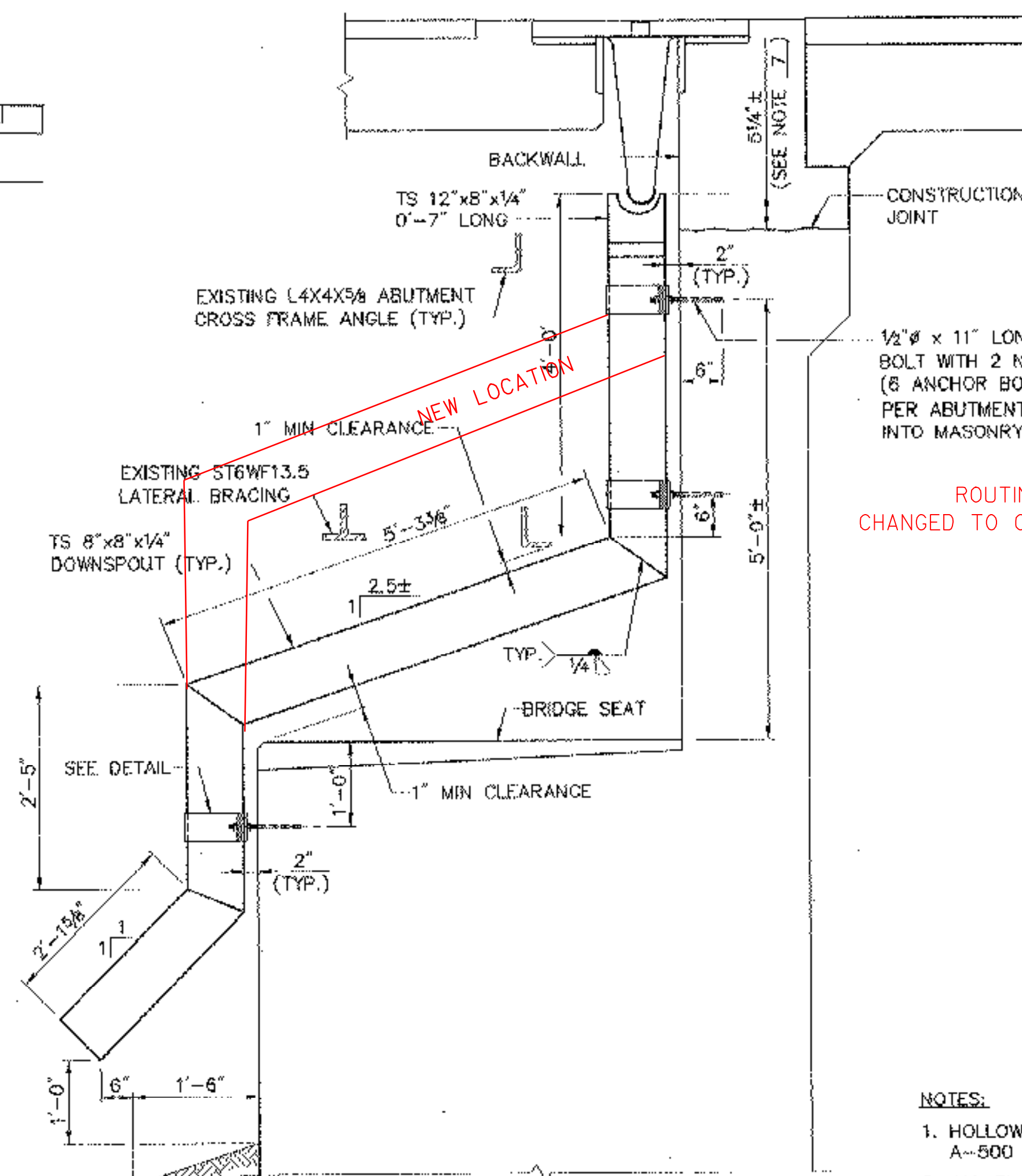


**ELEVATION BAR "B"**



**DOWNSPOUT TO ABUTMENT ATTACHMENT DETAIL**  
SCALE: 1 1/2" = 1'-0"

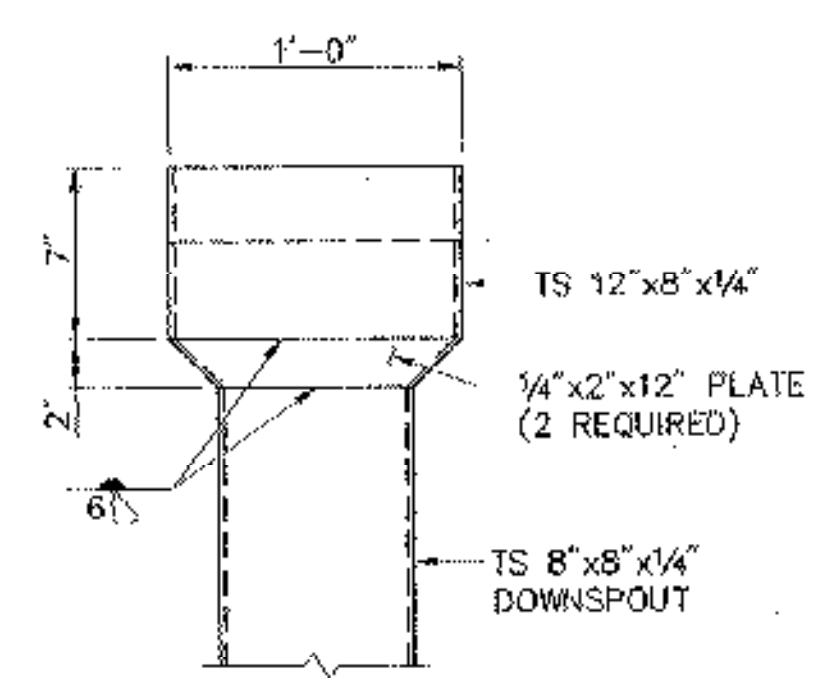
**BAR DETAILS**  
SCALE: 1 1/2" = 1'-0"



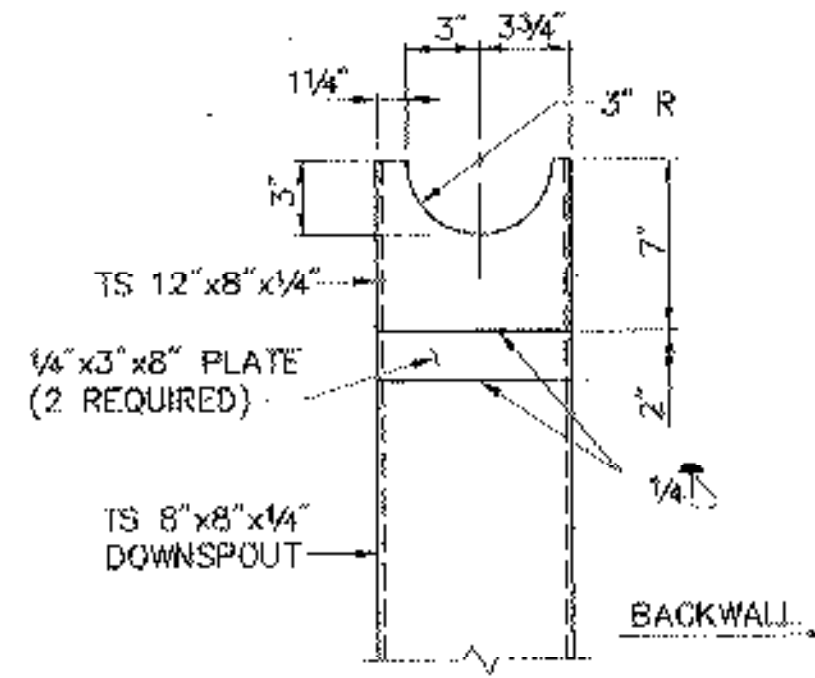
**SIDE ELEVATION**  
SCALE: 3/4" = 1'-0"

ROUTING OF DOWN SPOUT TUBE CHANGED TO CLEAR CROSS FRAME AND BRACING

- NOTES:**
- HOLLOW STRUCTURAL STEEL TUBING SHALL CONFORM TO A-500 OR A-501.
  - ALL PLATES, BARS, AND ANGLES SHALL CONFORM TO AASHTO M-270, GRADE 36.
  - DOWNSPOUTS AND BRACKETS SHALL BE GALVANIZED IN ACCORDANCE WITH ASTM A-153 AFTER FABRICATION.
  - ALL BOLTS AND RELATED HARDWARE SHALL BE ASTM A-307 AND SHALL BE GALVANIZED IN ACCORDANCE WITH ASTM A-153 (AASHTO M-232).
  - ANY PLACE WHERE THE GALVANIZING HAS BEEN REMOVED FROM THE DOWNSPOUT OR BRACKETS, EITHER BY CUTTING, BURRING, WELDING, PLACING, OR BY ANY OTHER MEANS, SHALL BE REPAIRED BY THOROUGHLY CLEANING THE DAMAGED AREAS WITH A WIRE BRUSH AND PAINTING THE AREAS WITH TWO COATS OF ZINC RICH PAINT.
  - PAYMENT FOR ALL MATERIALS AND LABOR RELATED TO THE DOWNSPOUT SHALL BE INCLUDED IN ITEM 506.60, "STRUCTURAL STEEL".
  - DIMENSIONS MAY VARY, ADJUST TOP OF HOPPER ELEVATION AS REQUIRED SO THAT BOTTOM OF TROUGH IS APPROXIMATELY 1 1/2"± BELOW THE HOPPER RIM @ 45° F.
  - CONCRETE SPLASH PAD SHALL BE PAID FOR AS ITEM 501.22, "CONCRETE, CLASS A". EXCAVATION AND BACKFILL REQUIRED TO PLACE SPLASH PAD SHALL BE SUBSIDIARY TO ITEM 501.22.



**ELEVATION**



**SIDE VIEW**

**HOPPER DETAILS**  
SCALE: 1/2" = 1'-0"

STATE OF VERMONT AGENCY OF TRANSPORTATION			
Town Of	HARTFORD	Bridge No.	11N & 11S
Highway No.	1-89 NB & SB	Log Sta.	
		Surv. Sta.	
1-89 NB & SB OVER WHITE RIVER, VT 14 & NECR			
DOWNSPOUT DETAILS			
Designed By	S.M. HODGDON	Drawn By	B.J. MASSE
Checked By	T.S. BRYANT	Bridge Design Supervisor	C.D. BAKER
Date	9/98	Date	9/98
PROJECT	HARTFORD	PROJECT NO.	IR 089-1(13)
VHB Cad Filename	50699DS	Bridge Sheet No.	17
		Sheet	17 of 101

VANASSE HANGEN BRUSTLIN, INC.