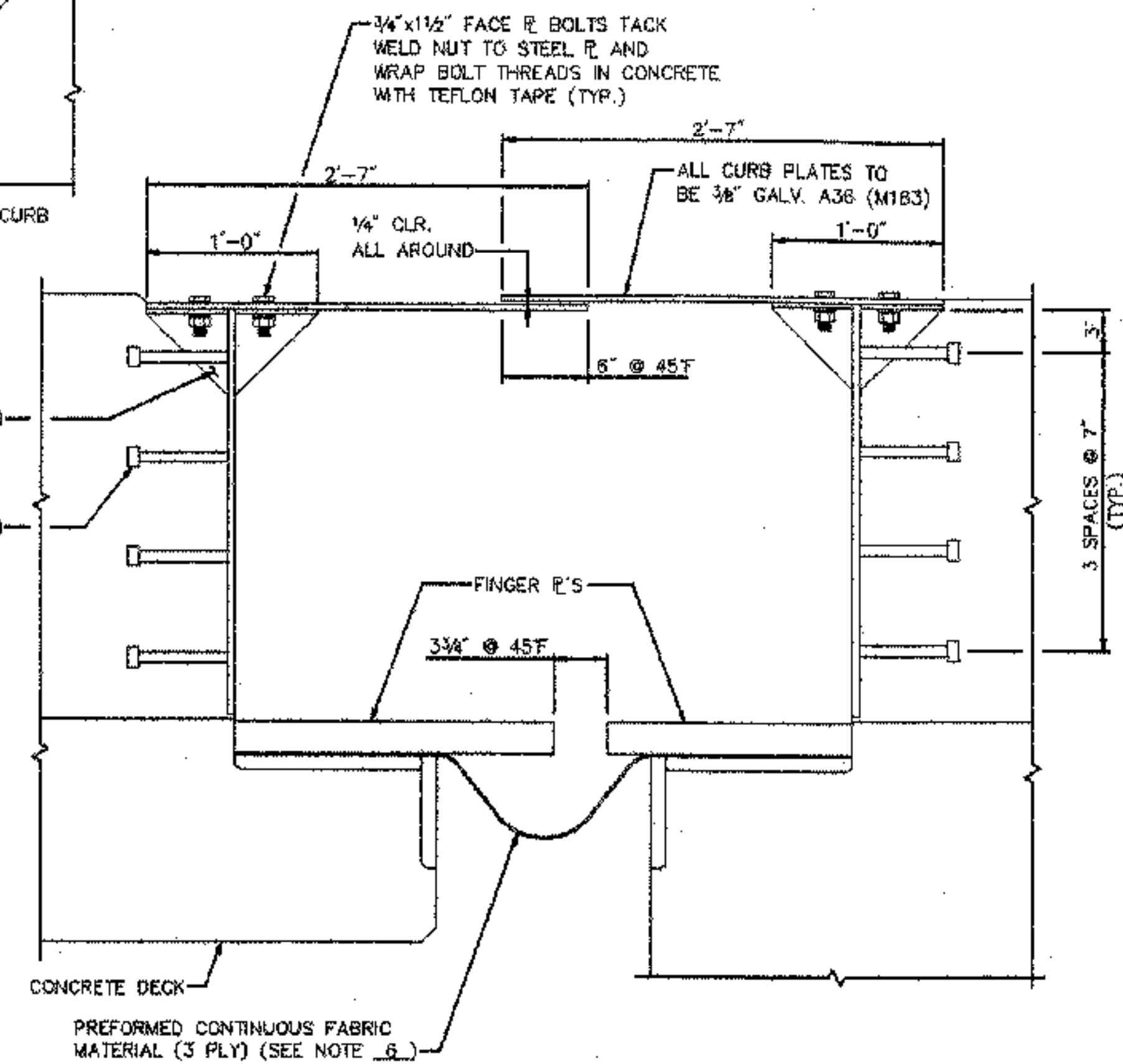
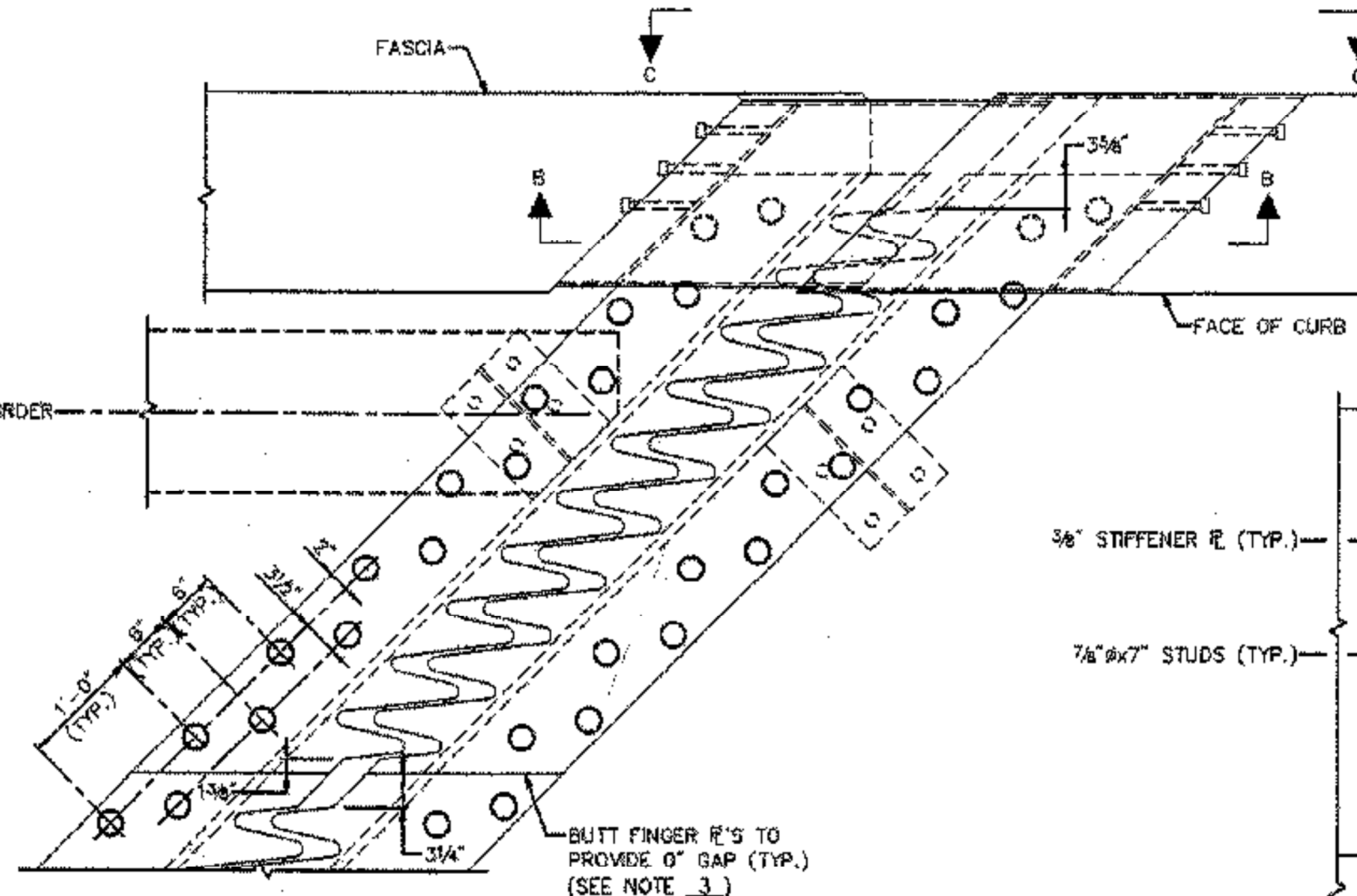


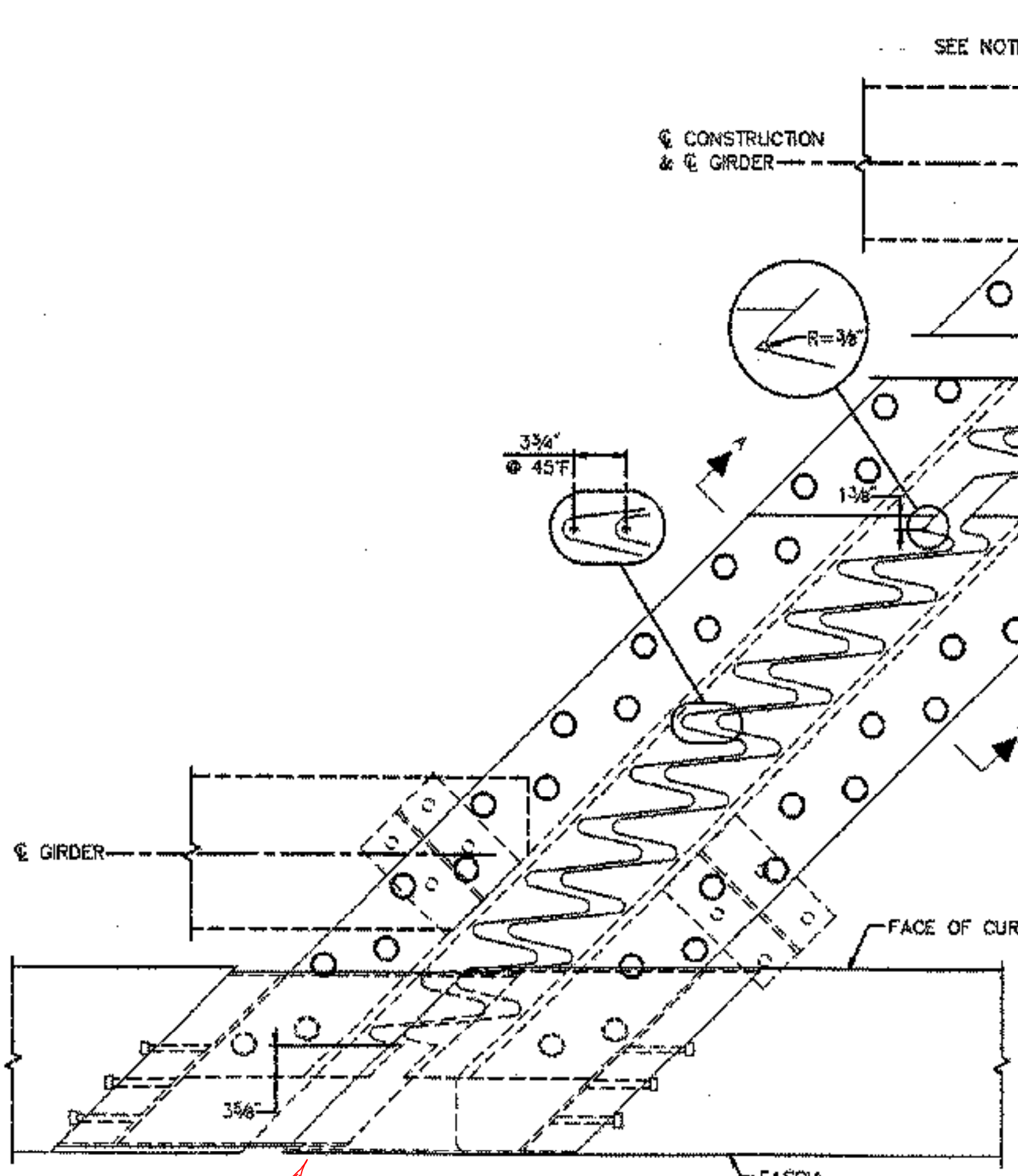
**VIEW C-C**  
SCALE: 1" = 1'-0"



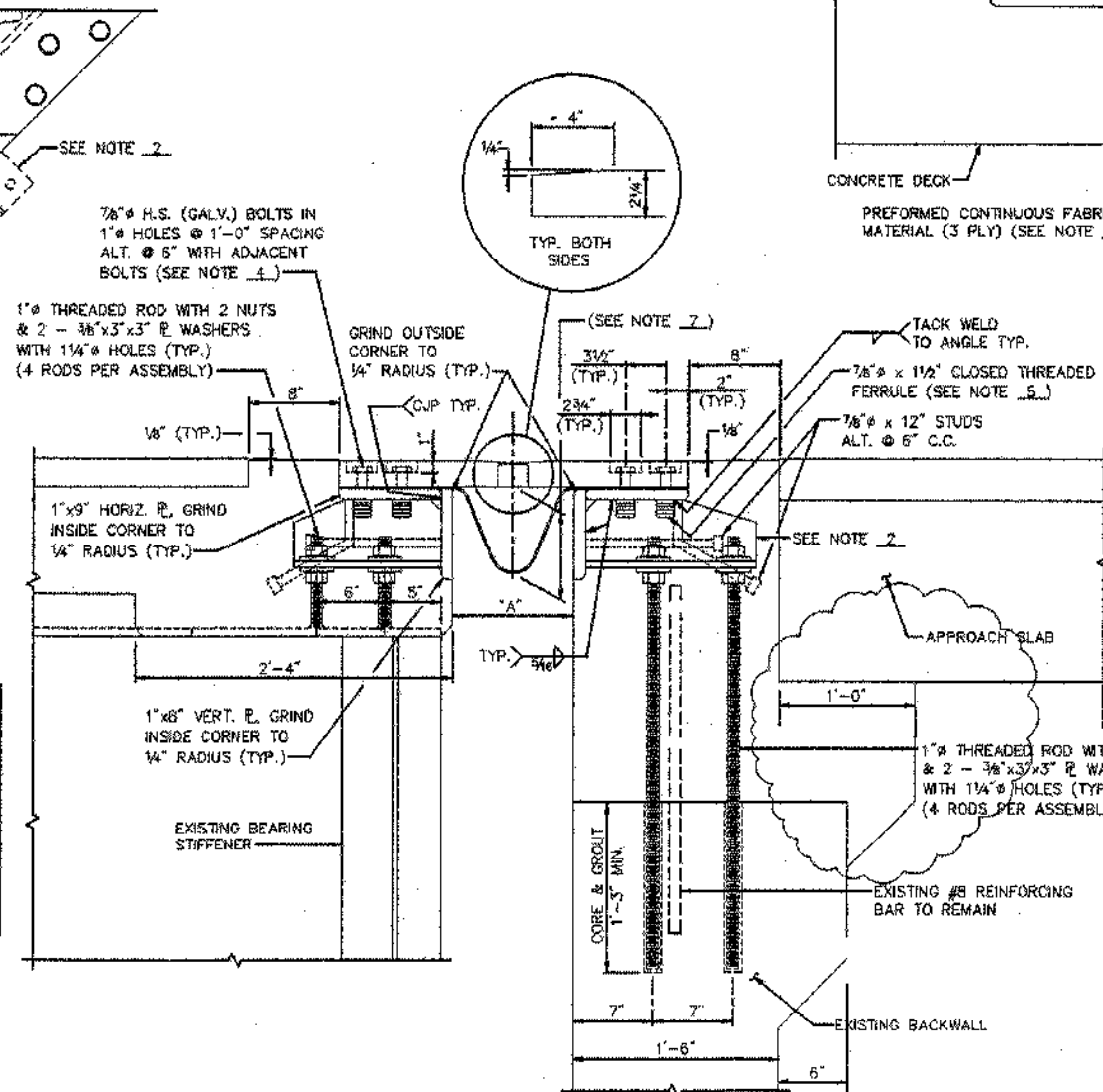
**SECTION B-B**  
SCALE: 1 1/2" = 1'-0"

**APPROACH SLAB REPLACEMENT REVISIONS 6/99**

- NOTES:**
1. SEE SHEET 16 FOR EXPANSION JOINT NOTES.
  2. SEE SHEET 16 FOR BRACKET DETAILS.
  3. SEE SHEET 16 FOR LOCATION OF FINGER PLATE JOINTS.
  4. SEE PARTIAL PLAN VIEW ON THIS SHEET FOR ADDITIONAL SPACING DETAILS. UNDER EACH LINE OF BOLTS THERE SHALL BE A CONTINUOUS STRIP OF 1/16" x 3" WIDE BUTYL RUBBER TAPE CONFORMING TO SUBSECTION 707.12.
  5. SEE SHEET 16 FOR FERRULE DETAIL.
  6. SEE SHEET 16 FOR DETAIL OF FABRIC TROUGH.
  7. SEE EXPANSION JOINT NOTE 2 ON SHEET 16.



**PARTIAL PLAN VIEW**  
SCALE: 1" = 1'-0"



**SECTION A-A**  
SCALE: 1 1/2" = 1'-0"

| TEMPERATURE ADJUSTMENT TABLE |         |
|------------------------------|---------|
| TEMPERATURE                  | "A"     |
| 0° F                         | 12"     |
| 15° F                        | 11 1/2" |
| 30° F                        | 11 1/8" |
| 45° F                        | 10 5/8" |
| 60° F                        | 10 1/4" |
| 75° F                        | 9 3/4"  |
| 90° F                        | 9 1/8"  |

**STATE OF VERMONT**  
**AGENCY OF TRANSPORTATION**

|   |              |                          |                      |
|---|--------------|--------------------------|----------------------|
| Town Of                                     | HARTFORD     | Bridge No.               | 11N & 11S            |
| Highway No.                                 | 1-89 NB & SB | Log Sta.                 |                      |
|   |              | Surv. Sta.               |                      |
| 1-89 NB & SB OVER WHITE RIVER, VT 14 & NECR |              |                          |                      |
| <b>EXPANSION JOINT DETAILS (1 OF 2)</b>     |              |                          |                      |
| Designed By                                 | S.M. HODGDON | Drawn By                 | B.J. MASSE           |
| Checked By                                  | T.S. BRYANT  | Date                     | 9/98                 |
|   |              | Bridge Design Supervisor | C.D. BAKER Date 6/99 |
| PROJECT                                     | HARTFORD     | PROJECT NO.              | IR 089-1(13)         |
| VHB Cad Filename 50699FJ1REV                |              | Sheet 15R of 101         |                      |
| Bridge Sheet No. 15R                        |              | PLOTTED 8/99             |                      |

VANASSE HANGEN BRUSTLIN, INC.