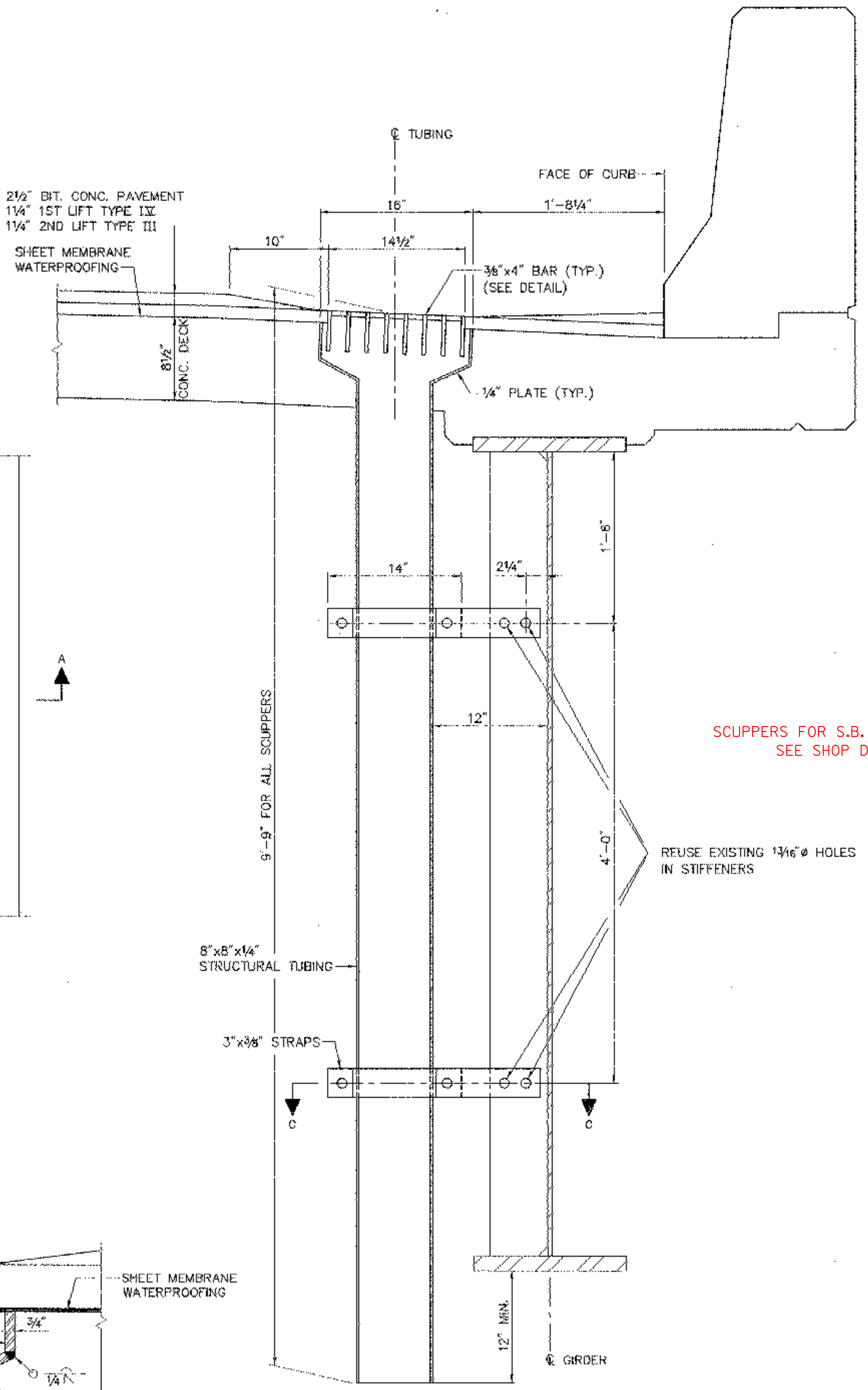
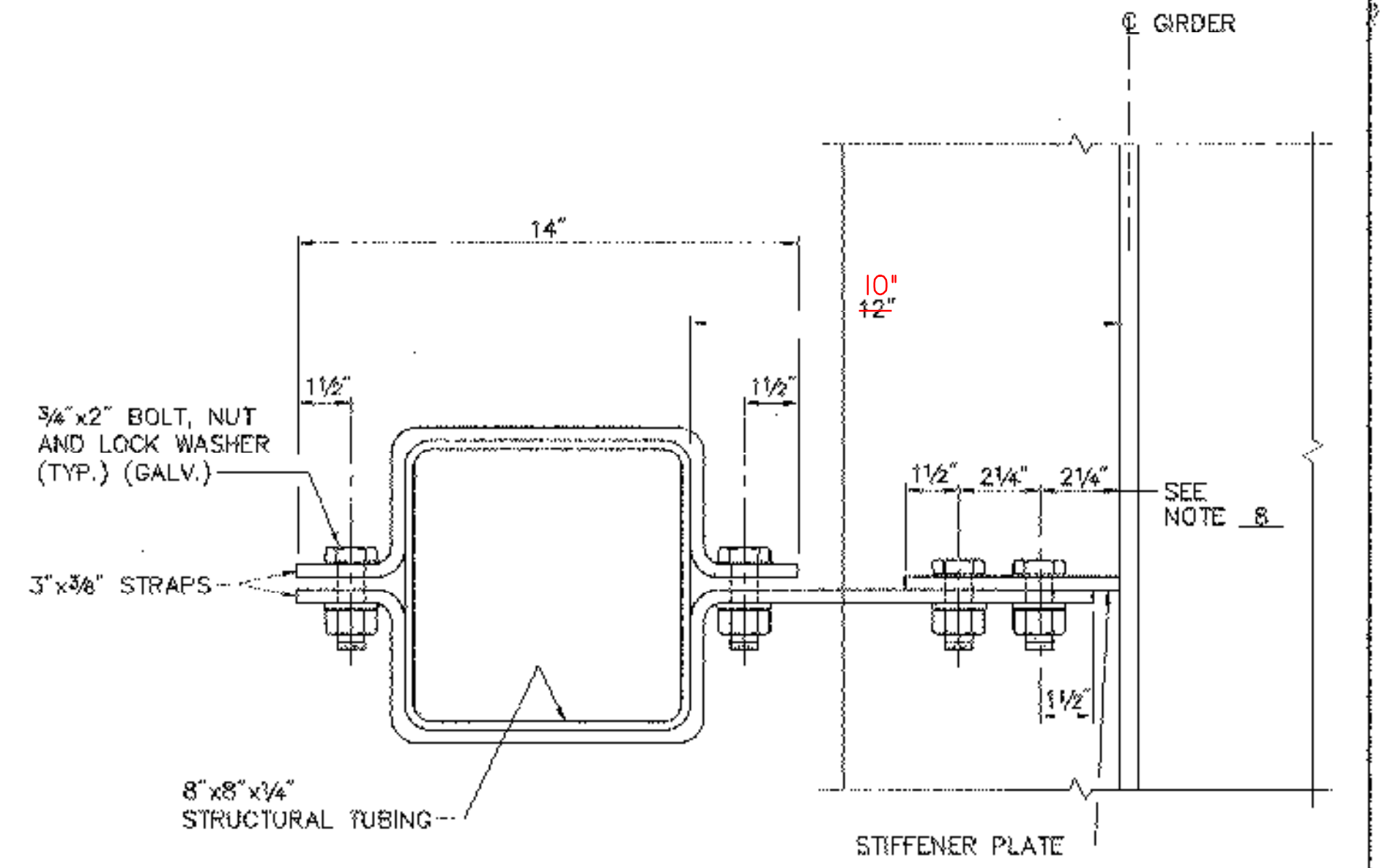


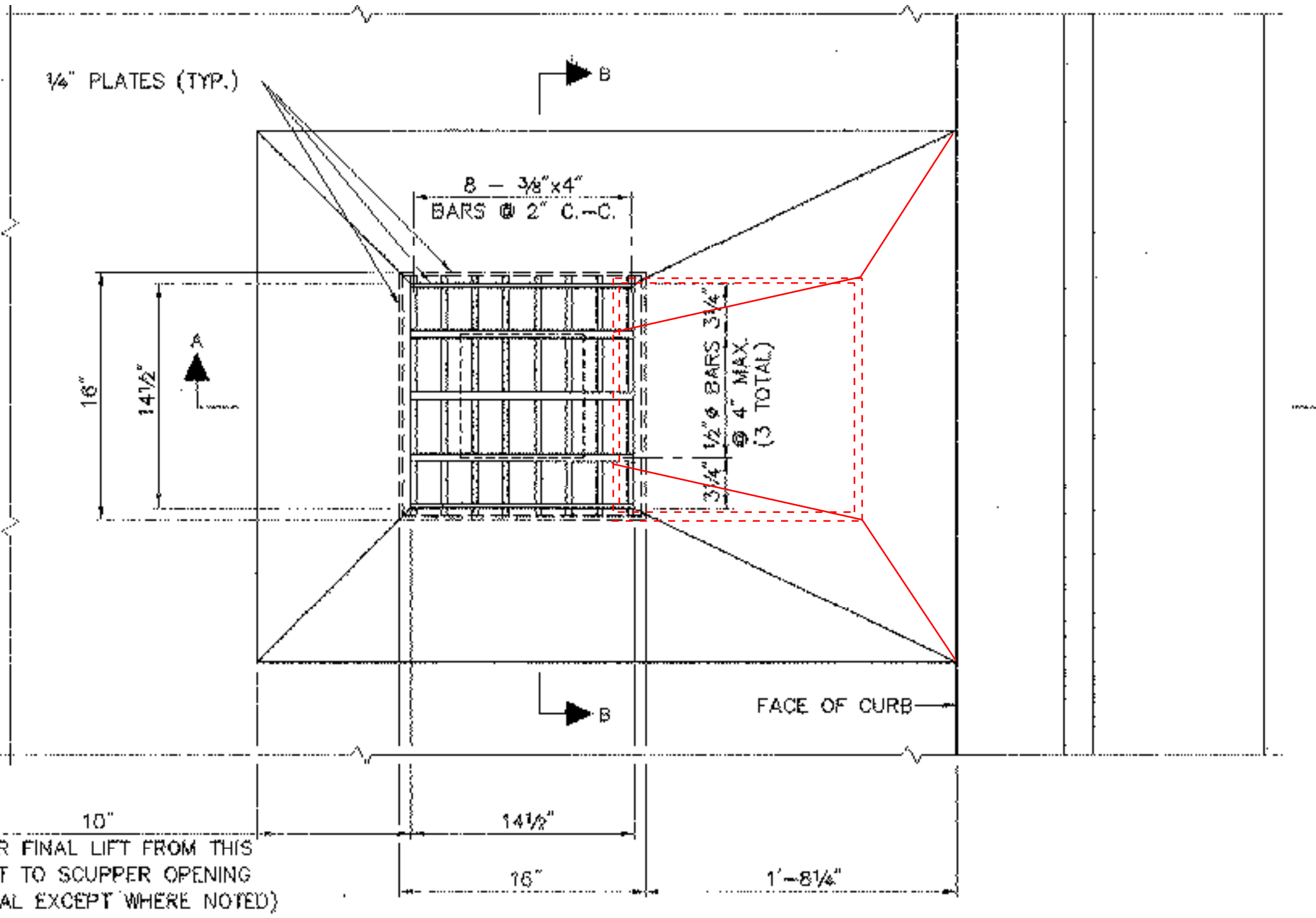
BAR DETAIL FOR GRATE
SCALE: 1 1/2" = 1'-0"



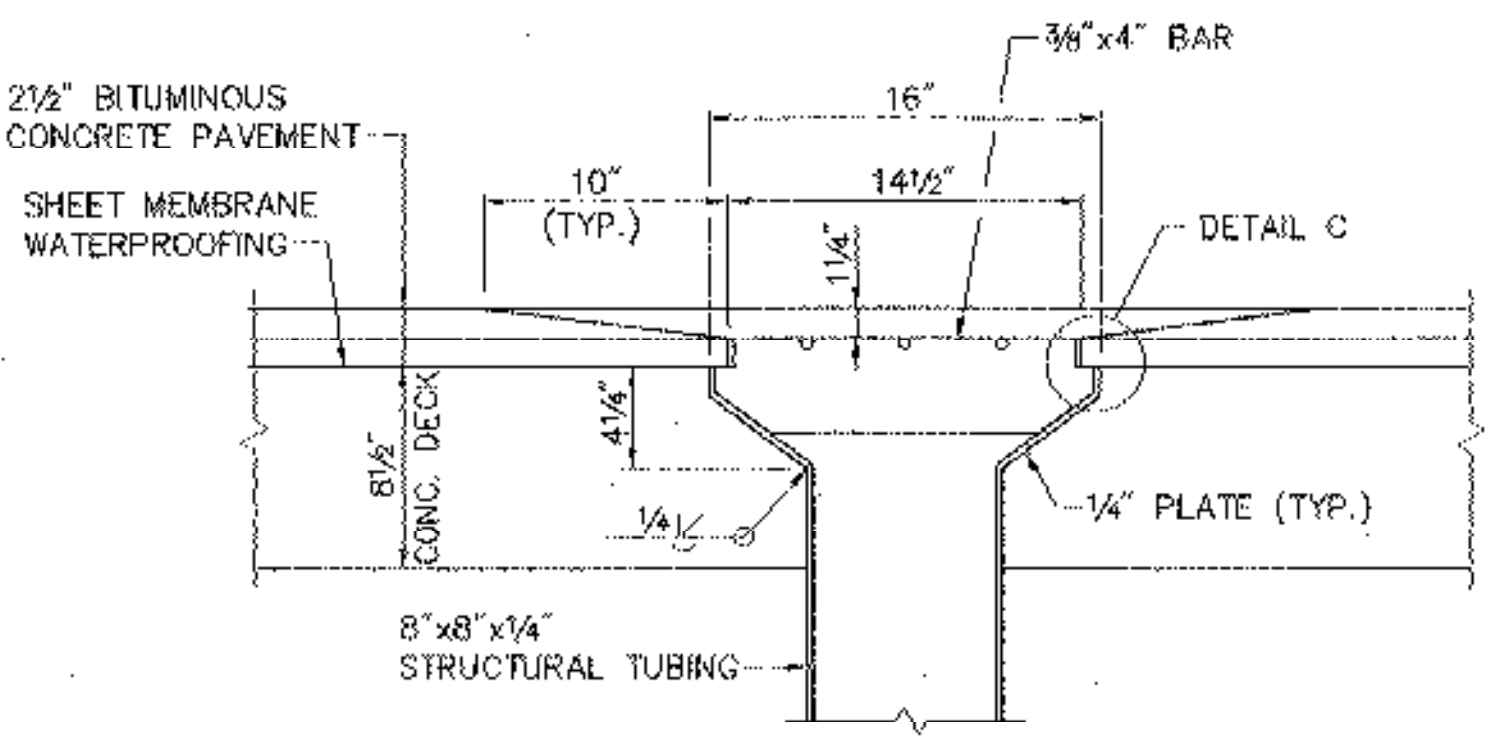
SECTION A-A
SCALE: 1 1/2" = 1'-0"



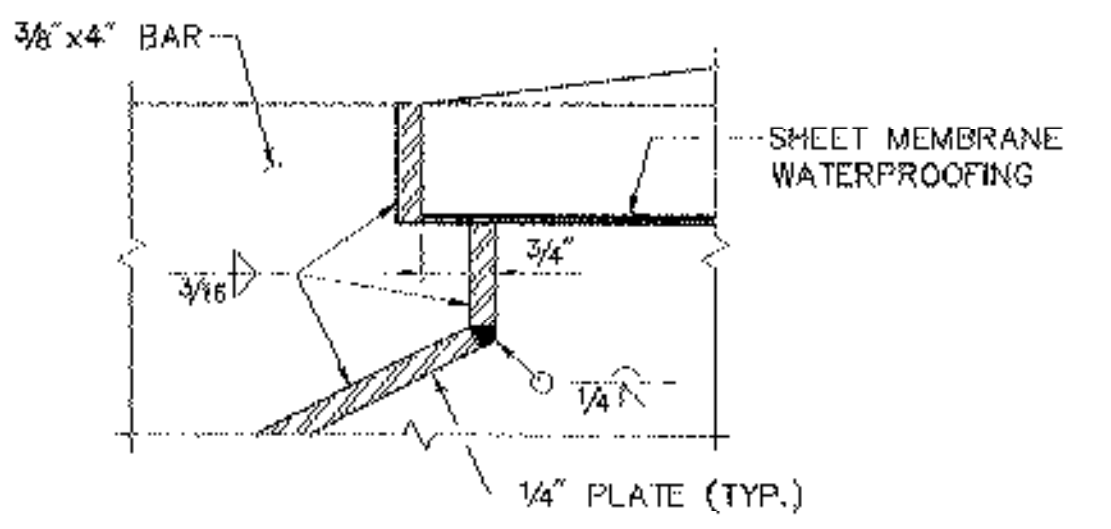
SECTION C-C
SCALE: 3" = 1'-0"



PLAN
SCALE: 1 1/2" = 1'-0"



SECTION B-B
SCALE: 1 1/2" = 1'-0"



DETAIL C
SCALE: 6" = 1'-0"

SCUPPERS FOR S.B. BRIDGE REVISED.
SEE SHOP DRAWINGS

SCUPPER NOTES:

1. ALL EXISTING SCUPPERS, INCLUDING THE STRAPS THAT ATTACH SCUPPERS TO GIRDER STIFFENERS, SHALL BE REMOVED. ALL COSTS FOR REMOVAL OF EXISTING SCUPPERS SHALL BE INCLUDED IN ITEM 529.20, "PARTIAL REMOVAL OF STRUCTURE".
2. NEW SCUPPERS, INCLUDING NEW STRAPS, SHALL BE INSTALLED AT ALL EXISTING SCUPPER LOCATIONS AS SHOWN ON THIS SHEET. NEW SCUPPERS SHALL BE PAID FOR UNDER ITEM 506.60, "STRUCTURAL STEEL".
3. HOLLOW STRUCTURAL STEEL TUBING SHALL CONFORM TO ASTM A-500 OR A-501.
4. ALL PLATES, BARS, STRAPS, AND ANGLES SHALL CONFORM TO AASHTO M 270, GRADE 36.
5. ALL SCUPPERS SHALL BE GALVANIZED IN ACCORDANCE WITH ASTM A-123 (AASHTO M 111) AFTER FABRICATION.
6. THE TOP SURFACE OF SCUPPER SHALL BE SLOPED TO MATCH ROADWAY SLOPE AND GRADE.
7. THE BAR AND GRATE SECTION MAY BE PREFABRICATED PROVIDING THE GEOMETRY AND SECTION PROPERTIES ARE EQUIVALENT TO THE DETAILS SHOWN.
8. SCUPPERS SHALL BE LOCATED AS SHOWN ON SHEETS 9 & 10. THE SCUPPER LOCATIONS SHOWN WERE OBTAINED FROM THE ORIGINAL SHOP DRAWINGS. THE CONTRACTOR SHALL FIELD VERIFY THE LOCATIONS OF ALL SCUPPERS, AND THE LOCATIONS AND DIMENSIONS OF THE ATTACHMENT BOLT HOLES IN THE VERTICAL STIFFENERS, AND MAKE ADJUSTMENTS TO THE SCUPPER ATTACHMENT DETAILS AS NECESSARY.

STATE OF VERMONT AGENCY OF TRANSPORTATION	
Town Of HARTFORD	Bridge No. 11N & 11S
Highway No. 1-89 NB & SB	Log Sta.
1-89 NB & SB OVER WHITE RIVER, VT 14 & NECR	
SCUPPER DETAILS	
Designed By J.A. ROUILLARD	Drawn By B.J. MASSE
Checked By T.S. BRYANT	Date 9/98
Bridge Design Supervisor C.D. BAKER Date 9/98	
PROJECT HARTFORD	PROJECT NO. IR 089-1(13)
VHB Cad Filename 50699SCP	
Bridge Sheet No. 14	Sheet 14 of 101

VANASSE HANGEN BRUSTLIN, INC.