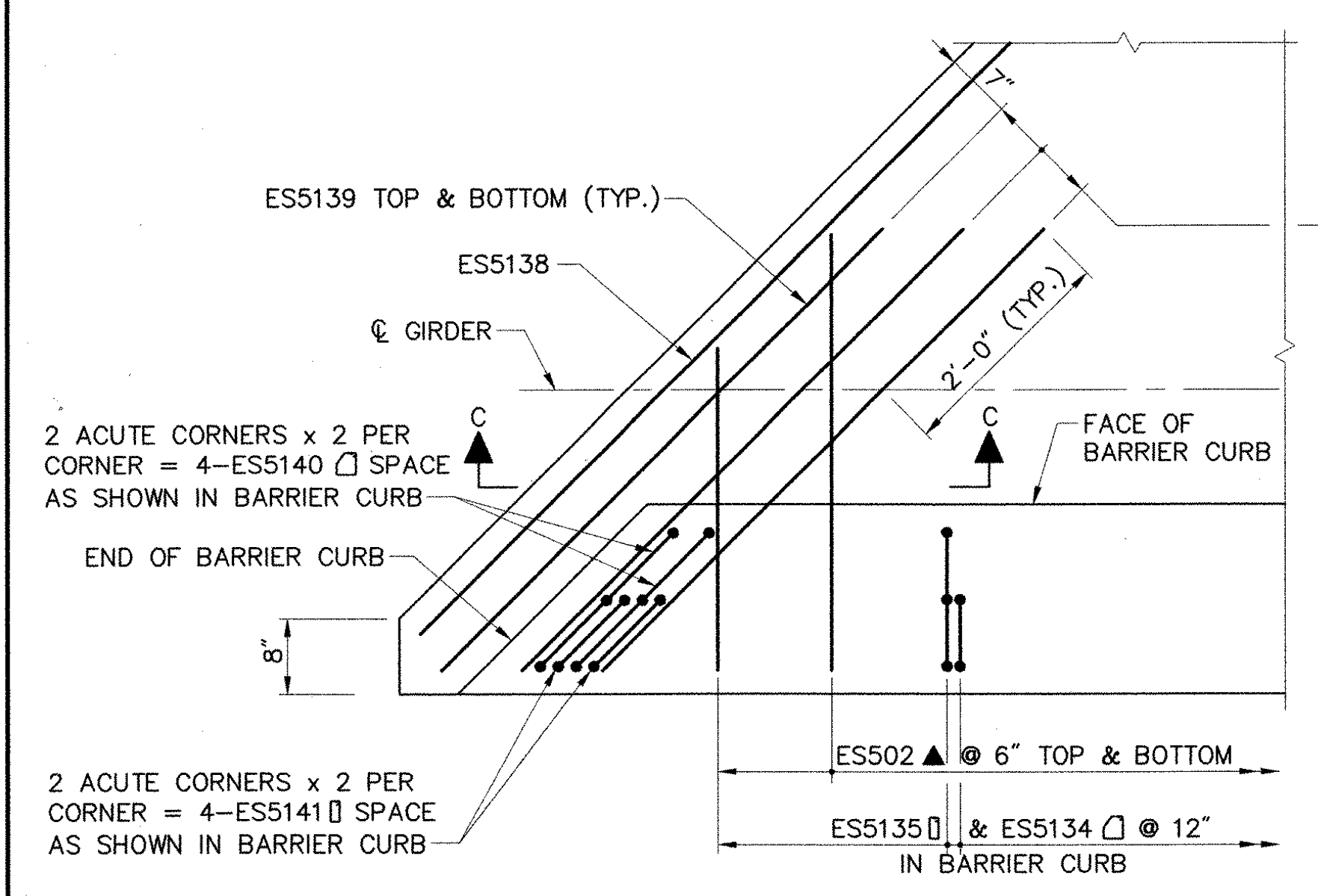
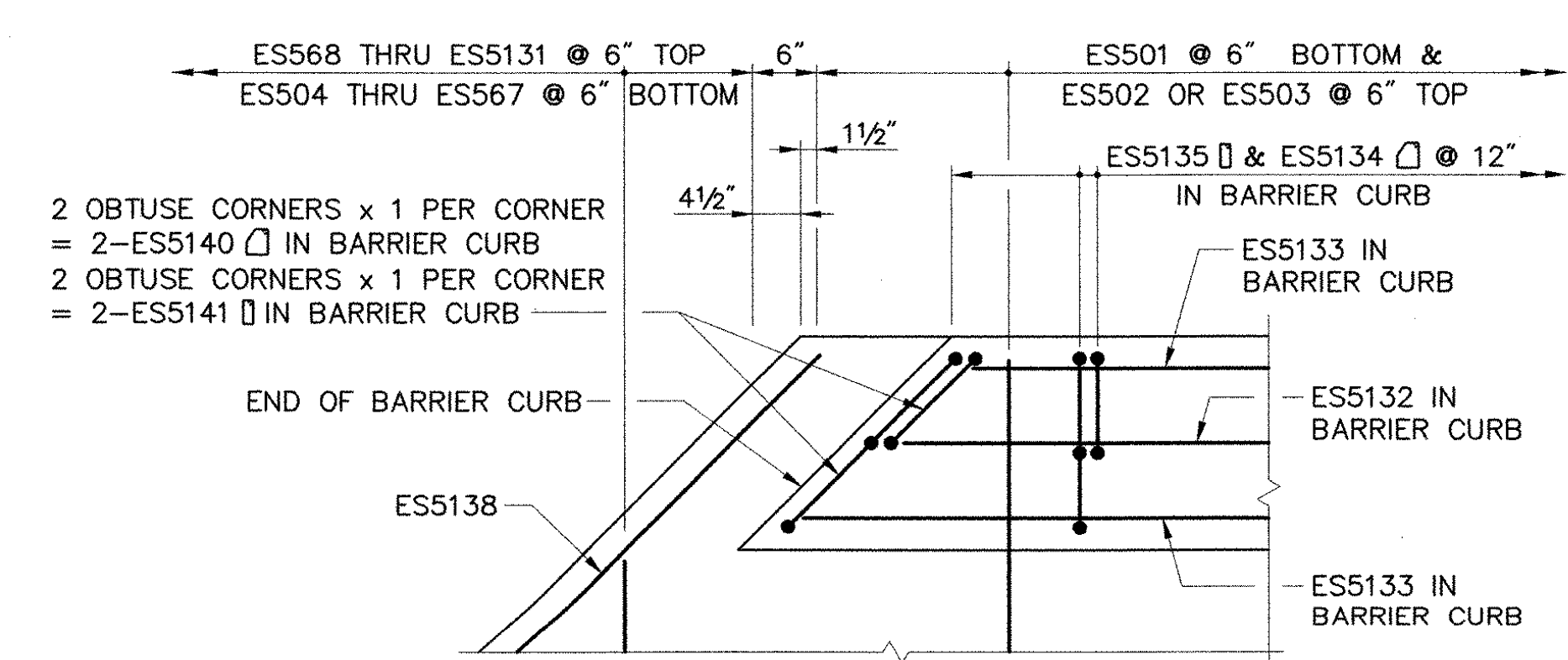


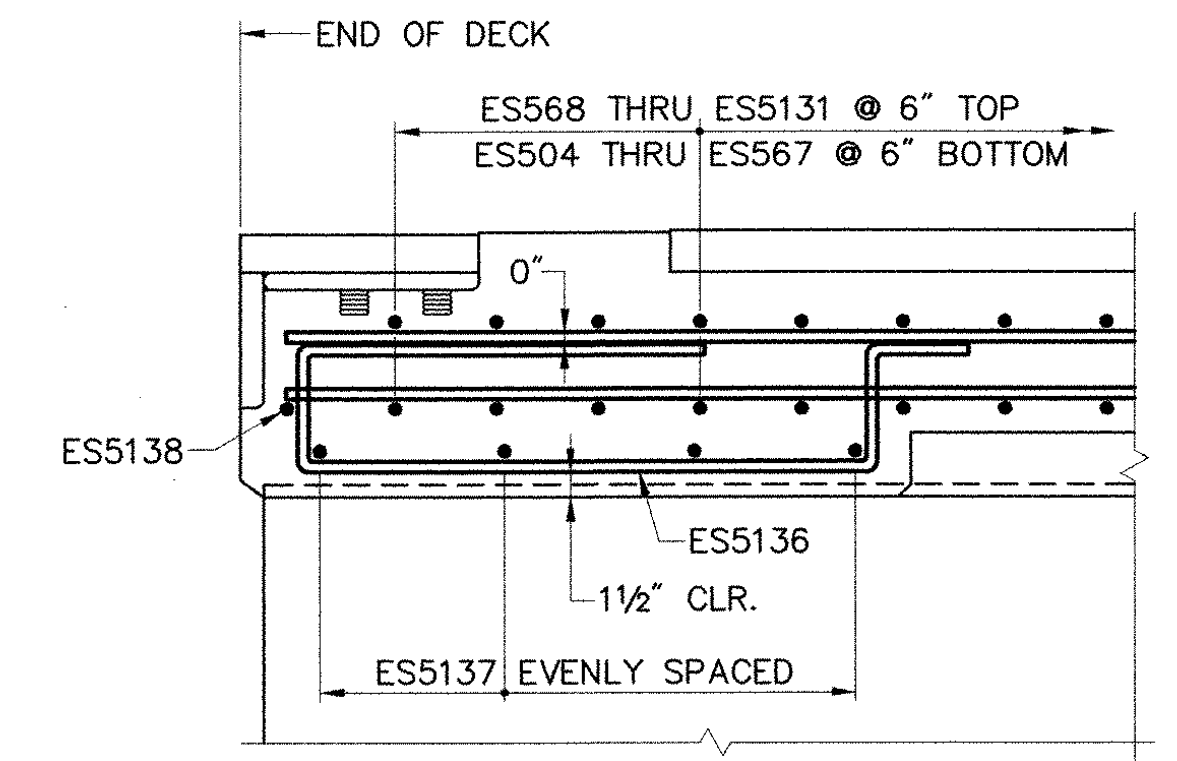
SPACE AS SHOWN IN SECTION A-A
SPAN 1 DECK REINFORCING PLAN
 SCALE: 1/8" = 1'-0"



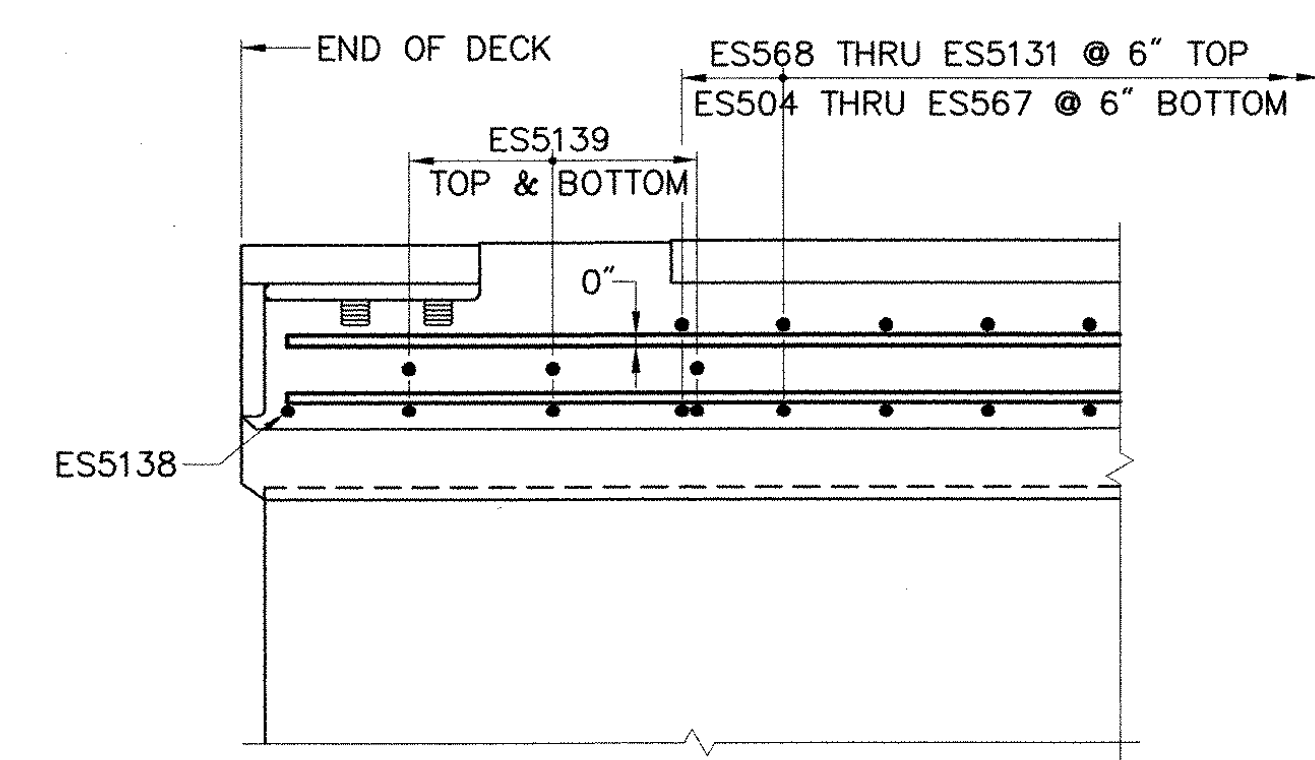
DETAIL A
 SCALE: 3/4" = 1'-0"



DETAIL B
 SCALE: 3/4" = 1'-0"



SECTION B-B
 SCALE: 1" = 1'-0"



SECTION C-C
 SCALE: 1" = 1'-0"

- NOTES:**
1. REINFORCING STEEL LAYOUT IS SYMMETRICAL ABOUT THE ϕ OF BEARING AT THE CENTER PIER, PIER 5. THE LAYOUT SHOWN IS FOR BRIDGE 11S. THE LAYOUT FOR BRIDGE 11N IS SIMILAR.
 2. NUMBER OF REINFORCING BARS SHOWN ARE TOTALS FOR ALL SPANS IN BRIDGE 11S ONLY.
 3. SEE SHEET 6 FOR SECTION A-A.
 4. ALL REINFORCING STEEL IN THE DECK AND CONCRETE BRIDGE BARRIER CURB SHALL BE EPOXY COATED.
 5. ALL EPOXY COATED BARS CUT IN THE FIELD SHALL BE SAW CUT AND THE EXPOSED ENDS SHALL BE TREATED AS SPECIFIED IN SECTION 507.04.

STATE OF VERMONT AGENCY OF TRANSPORTATION	
Town Of HARTFORD	Bridge No. 11N & 11S
Highway No. 1-89 NB & SB	Log Sta. Surv. Sta.
1-89 NB & SB OVER WHITE RIVER, VT 14 & NECR	
DECK REINFORCEMENT (2 OF 3)	
Designed By J.A. ROUILLARD	Drawn By B.J. MASSE
Checked By T.S. BRYANT	Date 9/98 Bridge Design Supervisor C.D. BAKER Date 9/98
PROJECT HARTFORD	PROJECT NO. IR 089-1(13)
VHB Cad Filename 50699DR2	Bridge Sheet No. 7
Sheet 7 of 101	

VANASSE HANGEN BRUSTLIN, INC.