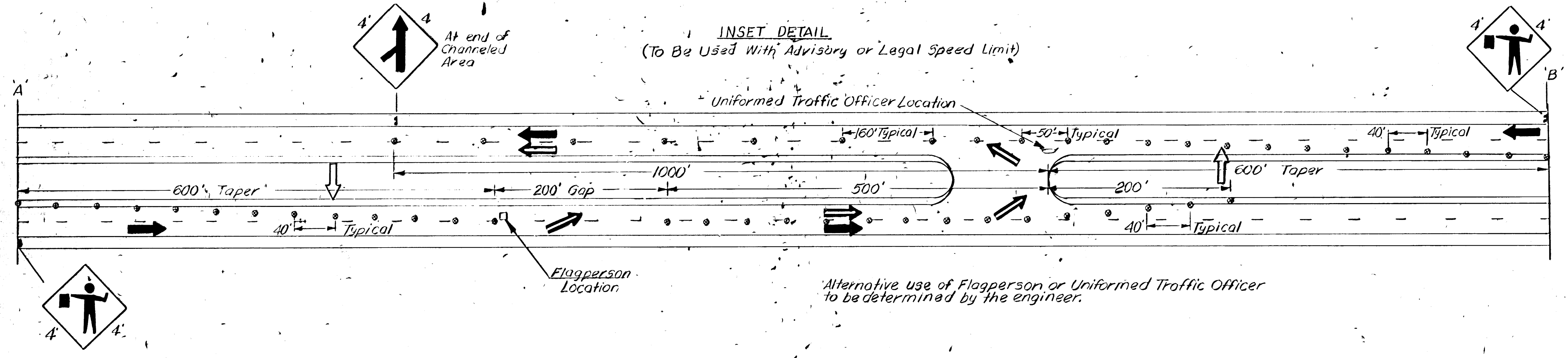


**LEGEND**  
 ——— Solid Sign Symbol = Use With Advisory Speed Limit  
 - - - - Dashed Sign Symbol = Use With Legal Speed Limit  
 (000') = Total Distance From Reference Point



Alternative use of Flagperson or Uniformed Traffic Officer to be determined by the engineer.

\* Legal Speed Limit Reductions must be approved by the STATE TRAFFIC COMMITTEE prior to sign erection. Requests may be made prior to the Preconstruction Conference.

When signing for this operation interferes with that for work on the mainline, revisions may be made. The Resident Engineer will establish the appropriate sign requirements.

DATUM	DATE 7/17/85
VERTICAL	FLASHING PANEL
HORIZONTAL	

**LEGEND**  
 → = Through Traffic  
 → = Construction Vehicles  
 ⊙ = Channelizing Device  
 → = FLASHING ARROW PANEL  
 NOT TO SCALE

TRAFFIC CONTROL TYPICAL FOR CONSTRUCTION VEHICLE TURNING		SURVEYED BY _____ DATE _____
		DRAWN BY <u>JB</u> DATE <u>3-15-85</u>
		TRACED BY _____ DATE _____
		SPRINGFIELD-HARTFORD
		IR 091 -1(20)
		PROJ. NO. _____
		TRAFFIC SHEET NO. _____ SHEET 50 OF 133