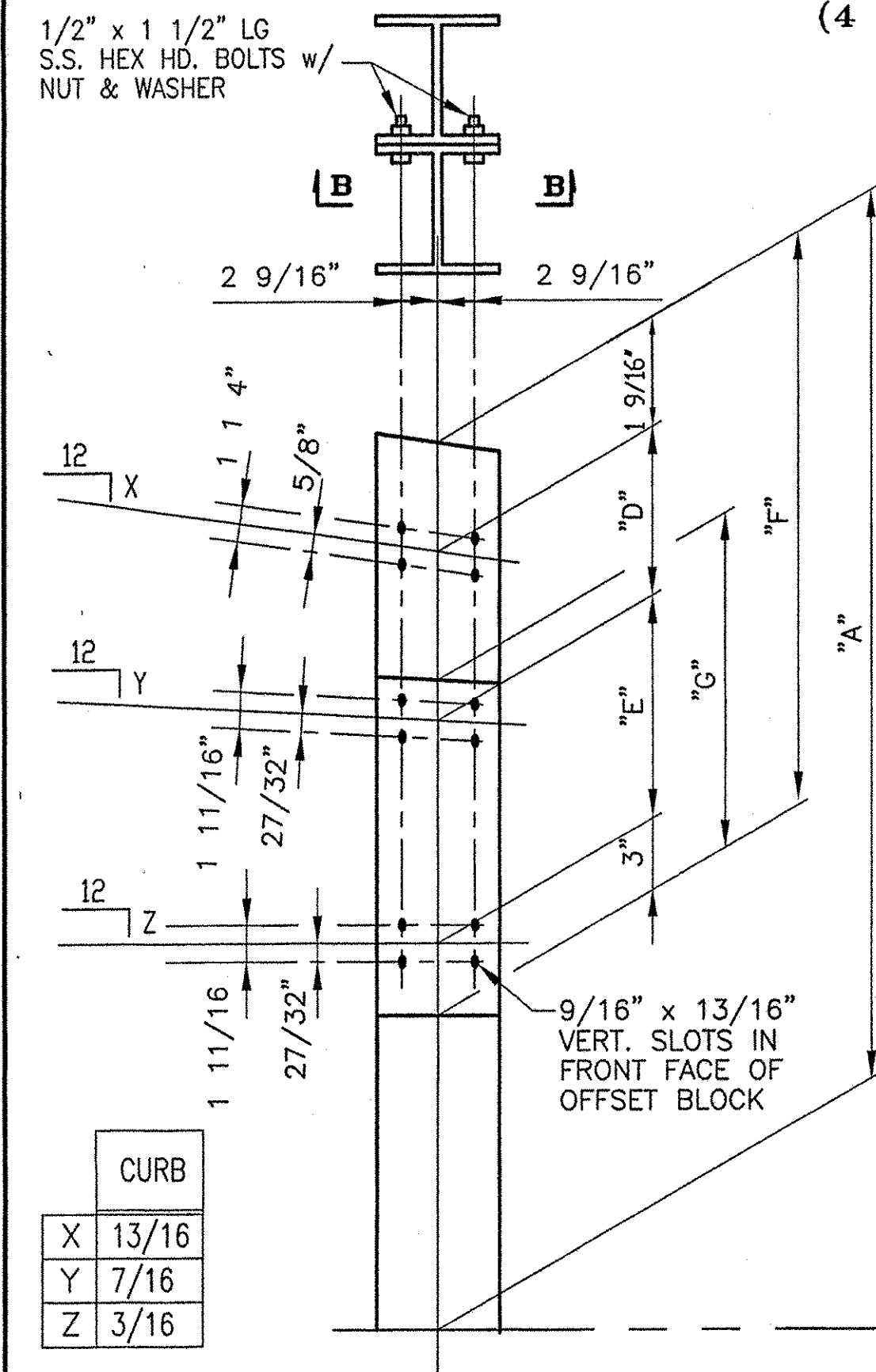


①	SS-12-A1
②	SS-03-G1
③	SS-03-G2

TYPICAL INSIDE ELEVATION

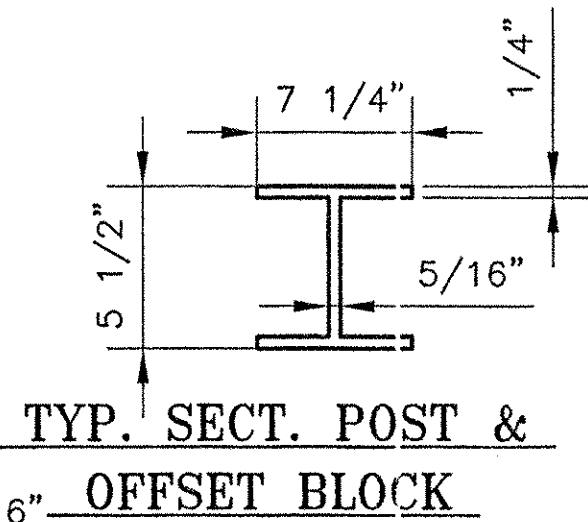
(4 REQ'D. ~ AS SHOWN)
(4 REQ'D. ~ OPP. HAND)



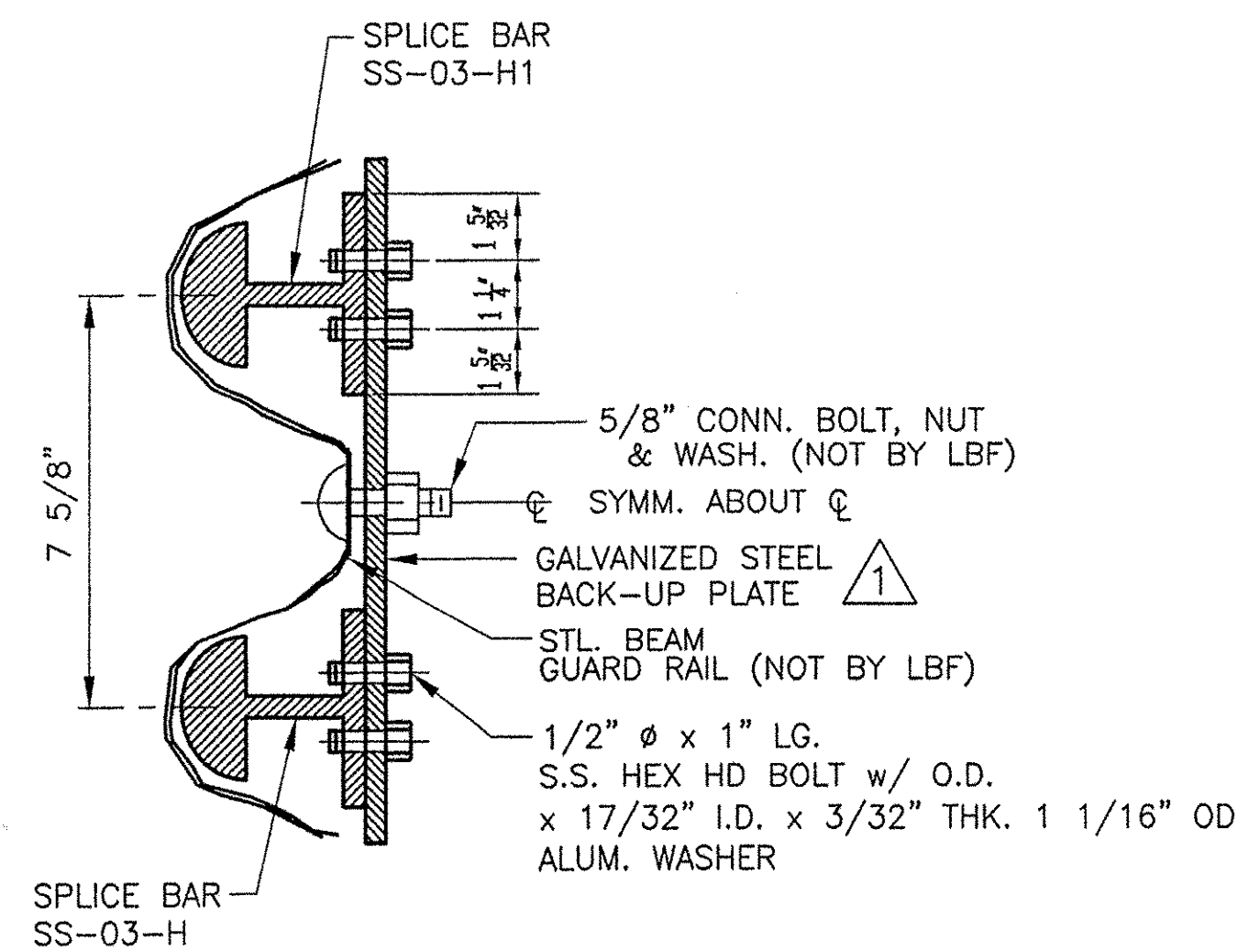
CURB	
X	13/16
Y	7/16
Z	3/16

CURB CONDITION

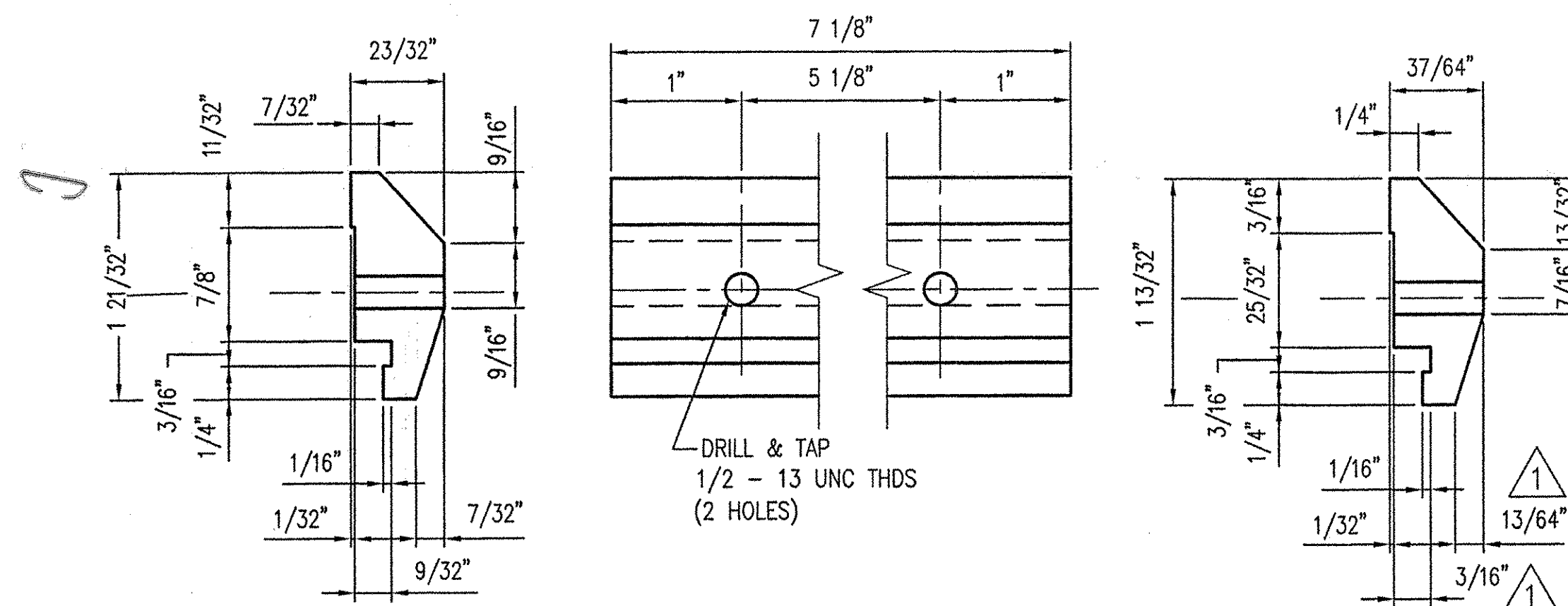
RAIL HEIGHT DIMENSIONS		OFFSET BLOCK DIMENSIONS						
POST No.	QTY.	A	B	C	D	E	F	G
1	4R 4L	3'-9 7/8"	3'-0 3/16"	1'-11 5/8"	10 3/16"	1'-0 9/16"	2'-3 5/16"	---
2	4R 4L	3'-7 3/8"	2'-10 7/8"	1'-11"	8 15/16"	11 7/8"	2'-1 3/8"	---
3	4R 4L	3'-4 13/16"	2'-9 9/16"	1'-10 3/8"	7 11/16"	11 3/16"	1'-11 7/16"	---
4	4R 4L	3'-2 5/16"	2'-8 5/16"	1'-9 3/4"	6 7/16"	10 9/16"	1'-9 9/16"	---
5	4R 4L	---	2'-6 9/16"	1'-8 15/16"	---	9 5/8"	---	1'-2 5/8"
6	4R 4L	---	2'-4 7/8"	1'-8 1/8"	---	8 3/4"	---	1'-2 5/8"
7	4R 4L	---	2'-3 1/8"	1'-7 1/4"	---	7 7/8"	---	1'-0 7/8"



④	SS-03-H1
⑤	SS-03-H2

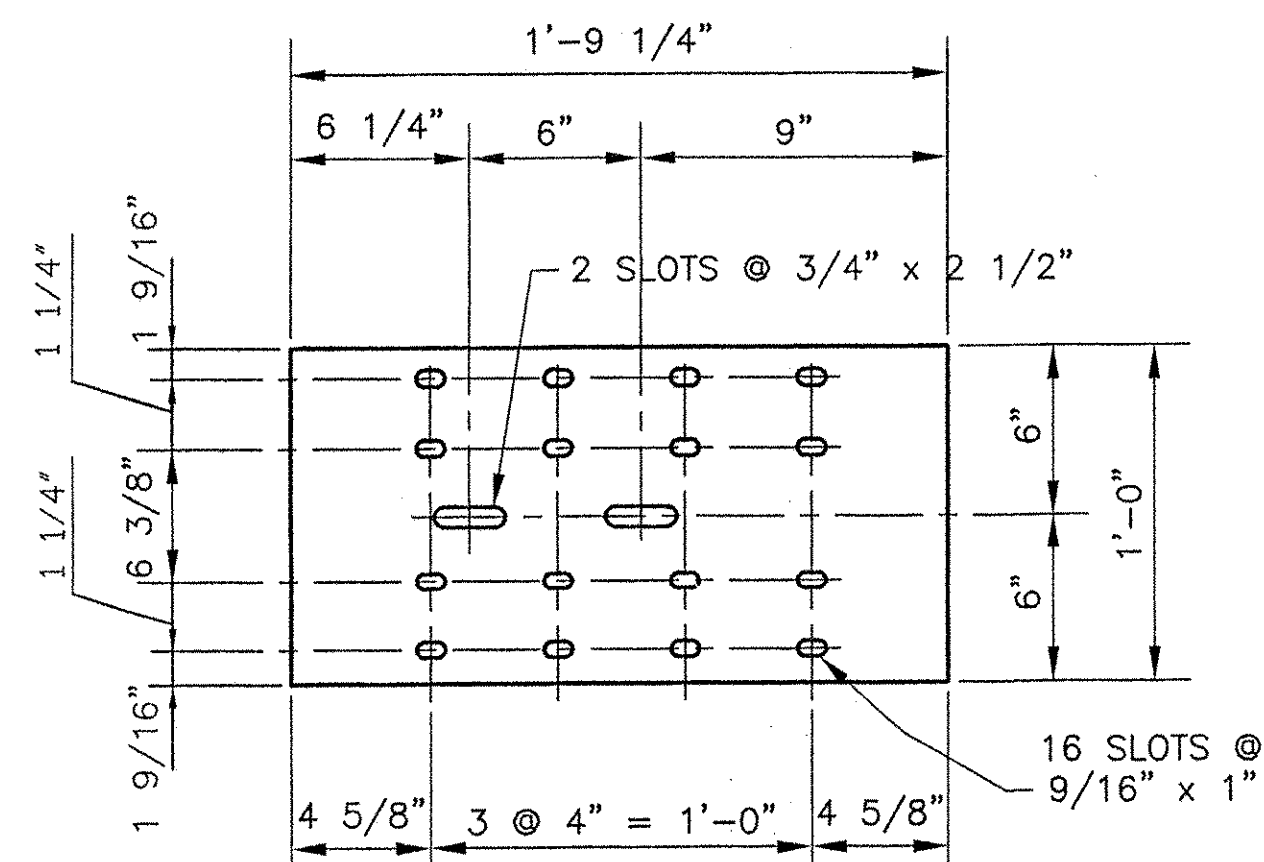


SECTION A-A



224 ~ REQ'D CLAMP BARS CB-03-A
(BARRIER RAIL)

64 ~ REQ'D CLAMP BARS CB-01-H
(HANDRAIL)



8 REQ'D. ~ BACK-UP PLATE
(1/4" THK. PLATE ~ A36 - GALV.)

GENERAL NOTES

ALL MATERIAL AND WORKMANSHIP SHALL BE IN ACCORDANCE WITH THE VERMONT AGENCY OF TRANSPORTATION STANDARD SPECIFICATIONS FOR ROAD AND BRIDGE CONSTRUCTION, DATED 1990.

DESCRIPTION	ASTM	ALLOY/GR.	REMARKS
RAILS, POSTS, SPLICES, PINS, CLAMP BARS & OFFSET BLOCKS	B221	6061-T6 OR 6351-T5	MIN. YIELD STRENGTH Fy = 35,000 psi.
HEX HEAD BOLTS	A193	GR. B8	
ALUMINUM WASHERS	B209	2024-T4	ALCLAD
STN. STL. NUTS	A276	TYPE 304	
END CAPS (SAND CAST)	B26	356-F	DRIVE TYPE GALV. A123
BACK-UP PLATES	A36		
ELECTRODES FOR WELDING	AWS A5.10	ER5356	

ENDS OF TUBE SECTIONS SHALL BE SAWED OR MILLED AND GRIND ALL CUT EDGES SMOOTH.

THE SPLICE BAR SHALL BE ATTACHED TO THE RAIL ELEMENT AS FOLLOWS:

THE RAIL SPLICE AT THE BRIDGE EXPANSION JOINT SHALL BE FASTENED ON BOTH SIDES OF THE RAIL SPLICE USING THE PARTIALLY THREADED BOLTS, WITH EITHER THE EXTRUDED WASHER OR THE WELDED WASHER, TIGHTENED SECURELY TO THE END OF THREADS, AND LEAVING A 1/8" GAP, THIS ALLOWS EXPANSION ON BOTH SIDES OF THE JOINT.

ALL THREADS TO BE UNC CLASS 2A/2B.

ALL EXTRUSION TOLERANCES NOT SHOWN SHALL BE IN ACCORDANCE WITH ASTM B221.

NOTE:

- RAIL LENGTHS DO NOT INCLUDE END CAPS AND/OR GAPS.
- LENGTH OF APPROACH RAILING ON THIS SHEET IS 200 LF PAY LENGTH.
- SEE LB2 FOR BILL OF MATERIAL.

BRIDGE Nos: 10 (MM 6.5) & 21 (MM 17.5)
PROJ. No: IM IR 089-1(8) ITEM No: 621.74

APPROVED: _____ REC'D APPROVAL _____
DRAWING _____

L.B. FOSTER COMPANY
1016 GREENTREE ROAD
PITTSBURGH, PENNSYLVANIA 15220

FOR: F. R. LAFAYETTE, INCORPORATED
VERMONT AGENCY OF TRANSPORTATION
TOWN OF HARTFORD-SHARON-ROYALTON, WINDSOR COUNTY
HIGHWAY No. 189 ~ 3-LINE ALUMINUM APPROACH RAIL
GENERAL NOTES AND TYPICAL DETAILS

①	REVISIONS PER APPROVAL	Dd	03 28 01
REV.	DESCRIPTION	BY	DATE
			MADE Dd DATE 02/01/01 JOB No. A03701 CUST. No.
			CHECK DATE DRAWING LB1 REV. No. ONE