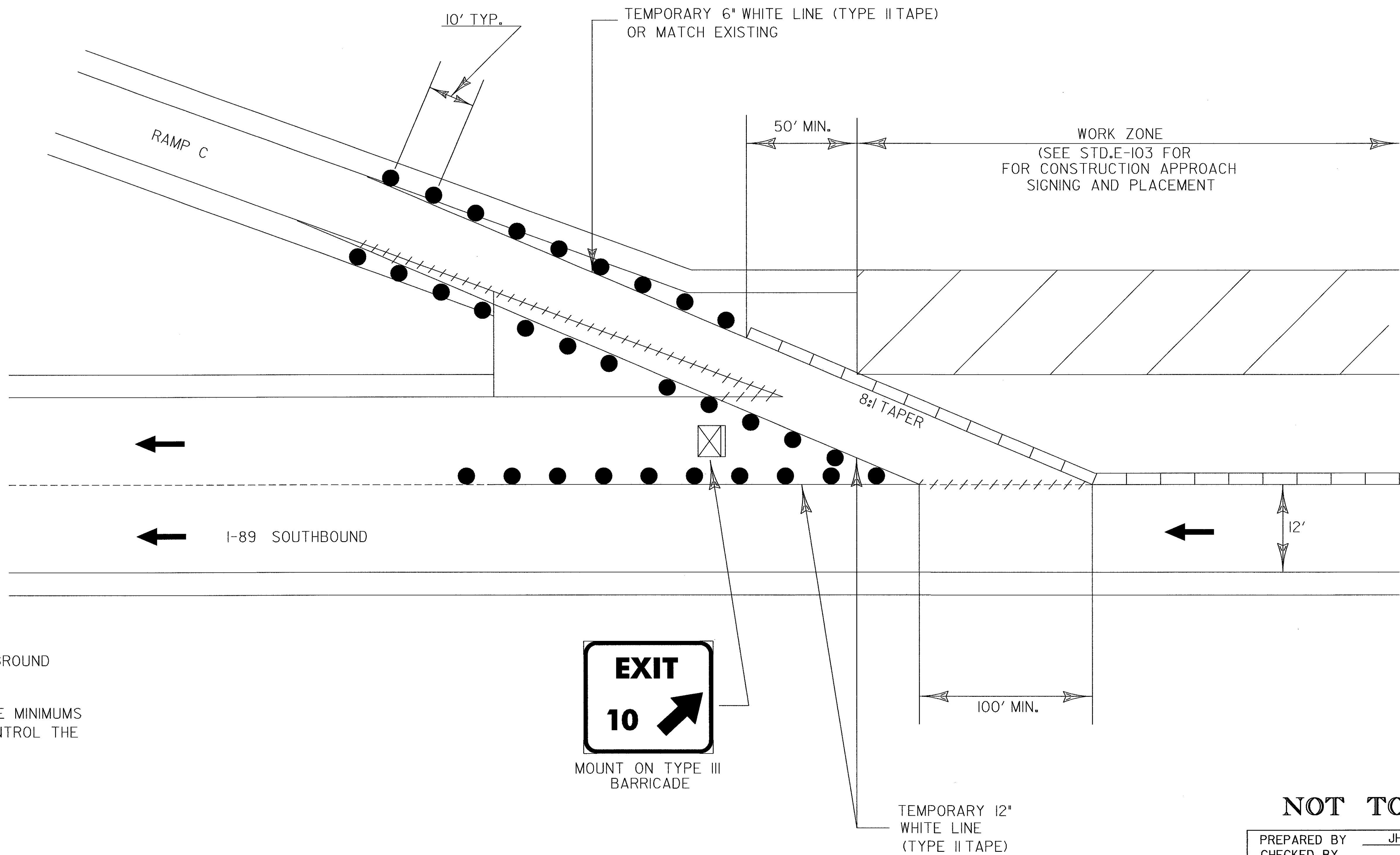


LEGEND:

- REFL.PLASTIC DRUMS
- PAVEMENT MARKING REMOVAL
- ← TRAFFIC FLOW
- ▨ WORK ZONE
- ⊠ TYPE III BARRICADE (MOD.)



NOTES:

1. EXIT SIGN SHALL BE MOUNTED A MINIMUM OF 3' ABOVE THE GROUND AND HIGH ENOUGH TO BE SEEN ABOVE CHANNELIZING DEVICES.
2. ALL DISTANCES ARE DESIRABLE MINIMUMS FIELD CONDITIONS SHALL CONTROL THE ACTUAL PLACEMENT



MOUNT ON TYPE III BARRICADE

**NOT TO SCALE**

PREPARED BY JHK DATE 4/99  
 CHECKED BY \_\_\_\_\_ DATE \_\_\_\_\_  
 DESIGN SUPERVISOR ABK DATE 4/99  
 PROJ. HARTFORD-SHARON-ROYALTON  
 IM IR 089-1(8)

PLOTTED: 21-NOV-2000  
 SHEET 183 OF 260 SHEETS

**TRAFFIC CONTROL PLAN  
 FOR INTERCHANGE 10 RAMP C**

traf/87a008/ta008tc.i  
 traf/87a008/ta008tc.dgn