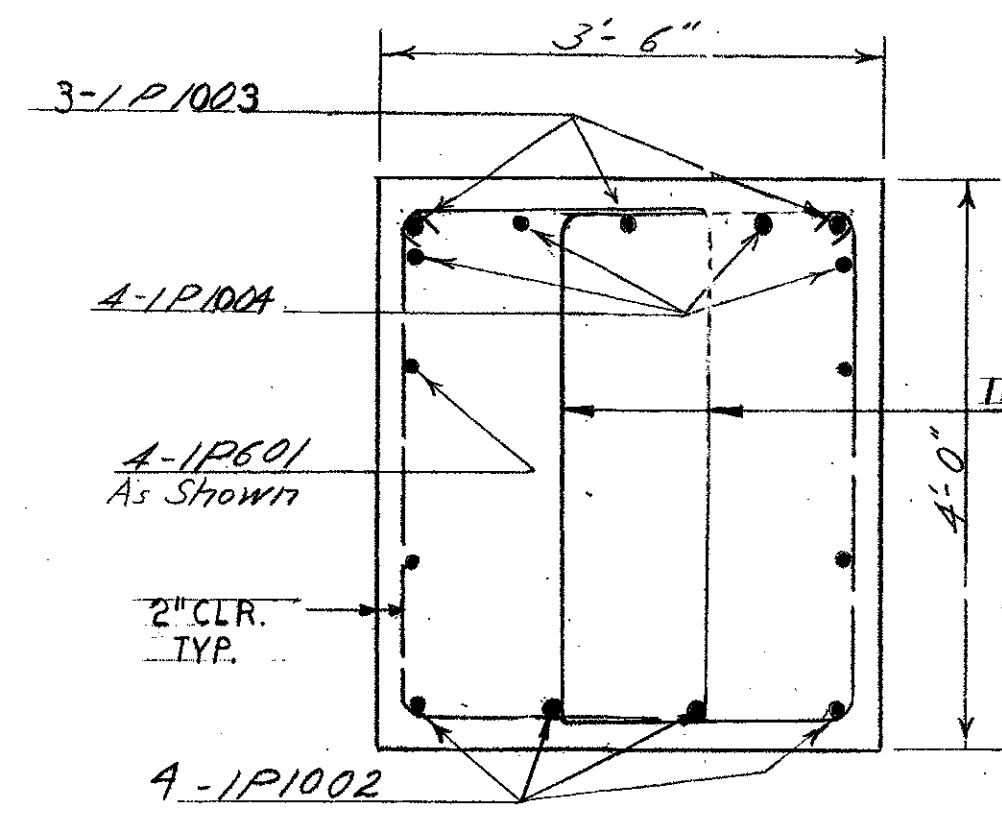
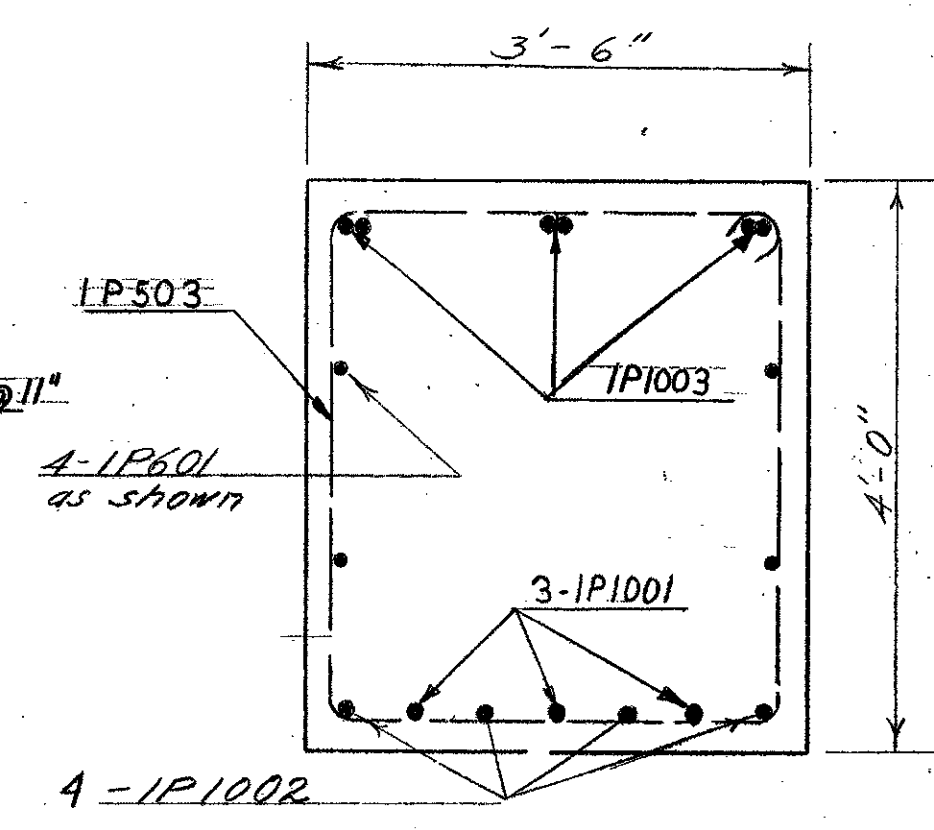


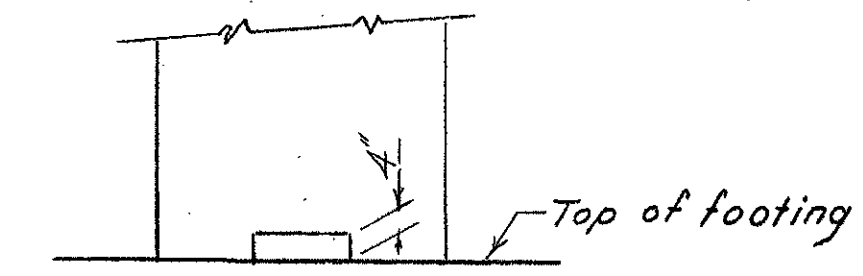
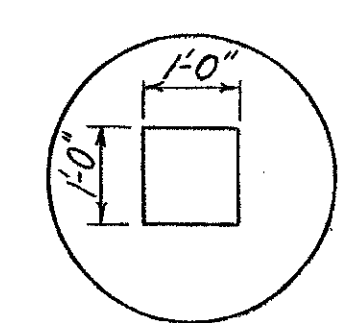
PLAN
Scale: 3/8" = 1'-0"



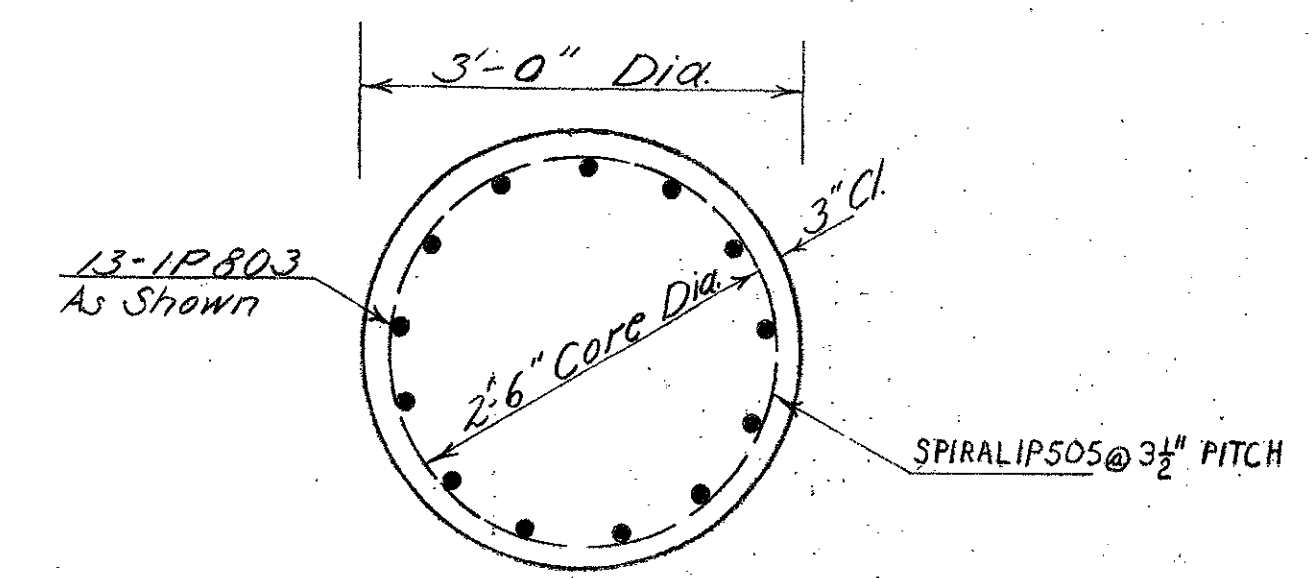
SECTION B-B
Scale: 3/4" = 1'-0"



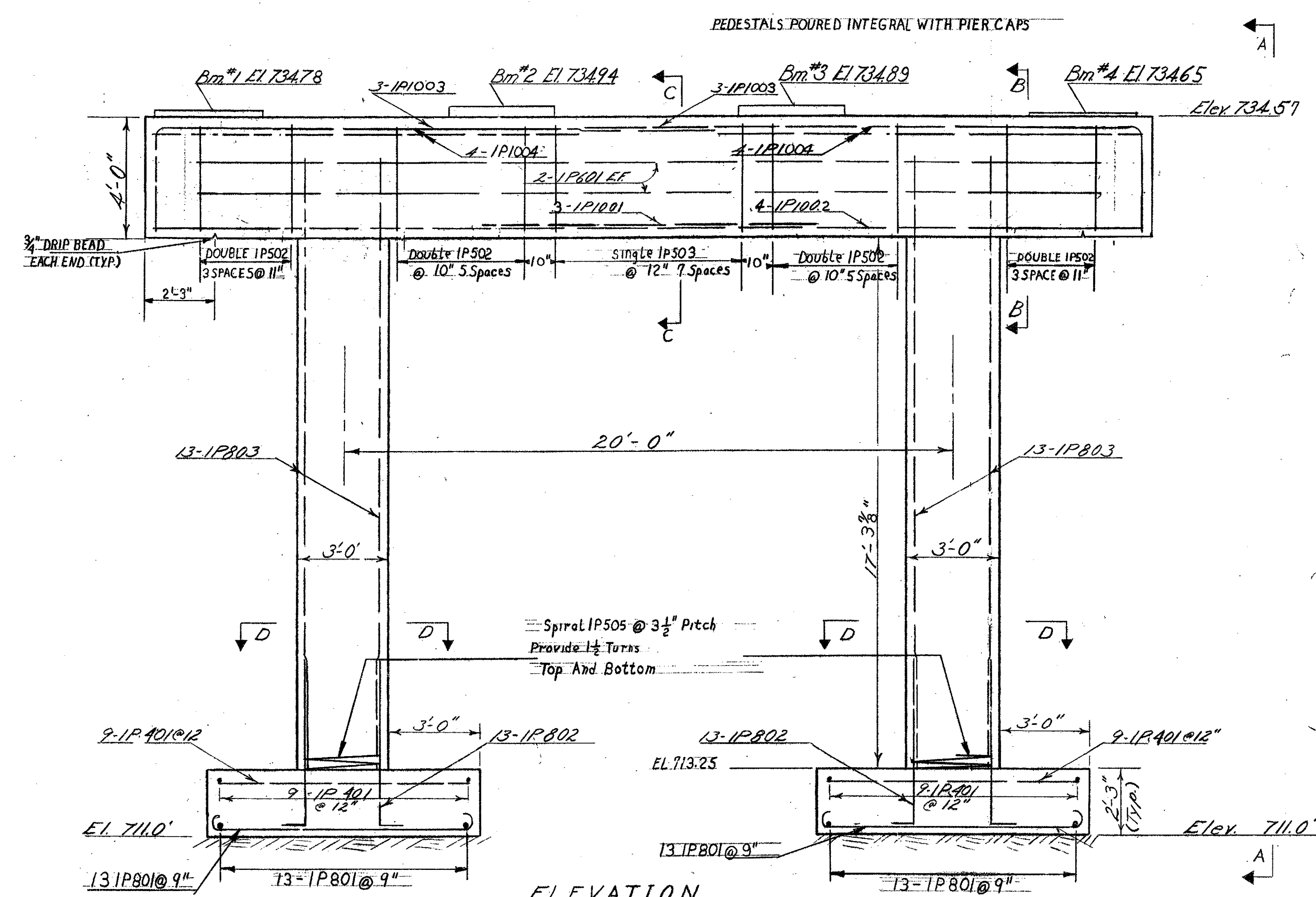
SECTION C-C
Scale: 3/4" = 1'-0"



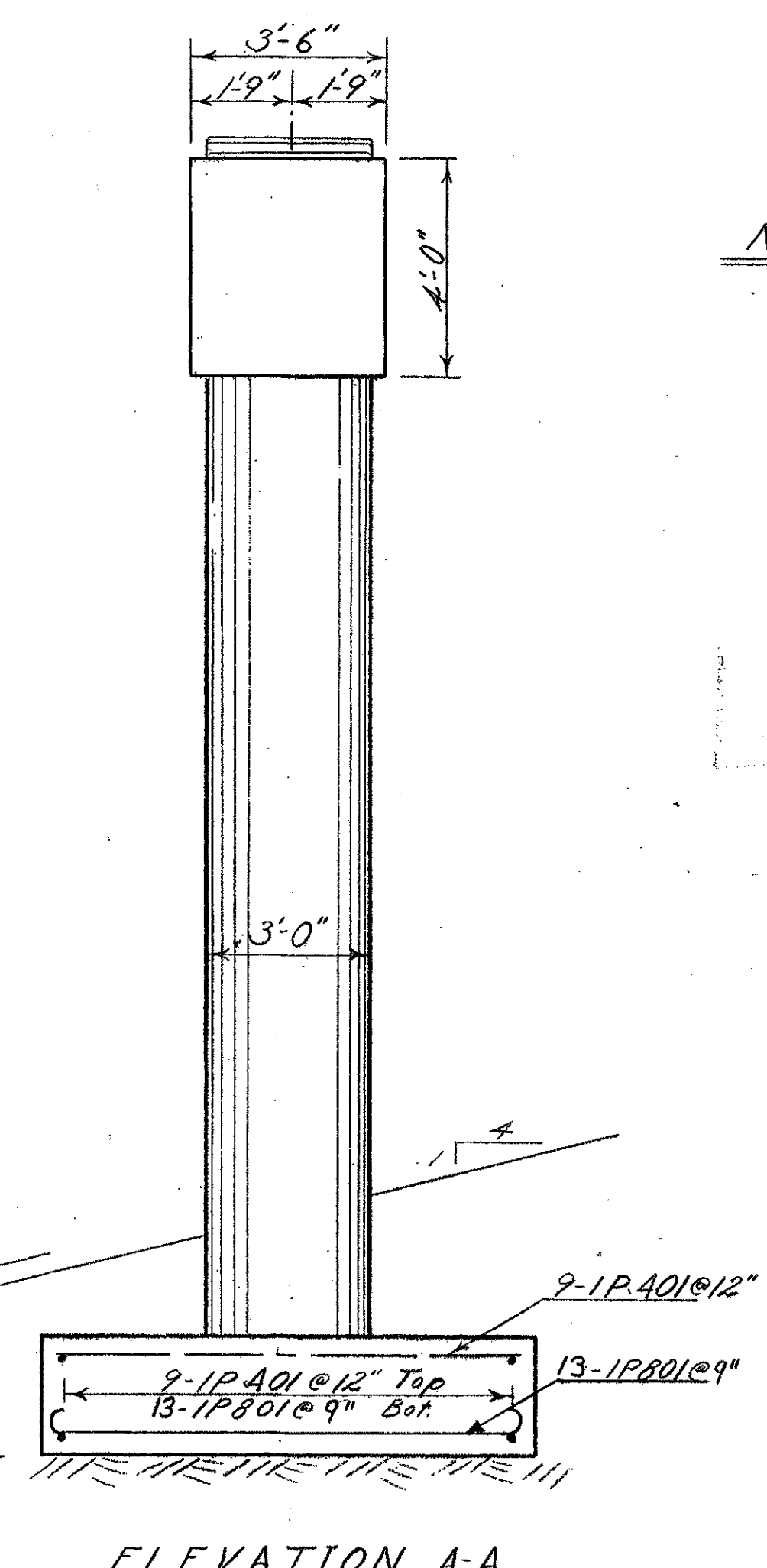
CONSTRUCTION JOINT DETAIL
Scale: 1/2" = 1'-0"



SECTION D-D
Scale: 3/4" = 1'-0"



ELEVATION
Scale: 3/8" = 1'-0"



ELEVATION A-A
Scale: 3/8" = 1'-0"

NOTES

1. For General Notes, see BR. 100.
2. All concrete in footing shall be Class B. All concrete in Columns and Cap shall be Class A-A.
3. The sides, ends, and bottom of the Pier Cap shall be coated with Item 440, Water Repellent.
4. All Spiral Reinforcement shall conform to AASHTO Designation M32-60 cold drawn steel wire for concrete Reinforcing Steel and shall be paid for under item 402 reinforcing Steel.
5. PIER FOOTINGS ARE DESIGNED FOR A BEARING PRESSURE OF 4 TONS/SQ FT.

THIS SHEET IS FOR INFORMATION PURPOSES ONLY
HARTFORD-SHARON-ROYALTON IM IR 009-1(c)

STATE OF VERMONT	
DEPARTMENT OF HIGHWAYS	
PROJECT	ROYALTON
TOWN OF	
ROUTE No	189 STA. 233+28
I 89 UNDER TOWN HIGHWAY #13	
PIER #1	
SCALE	As Shown
IN CHARGE	W. M. Smith