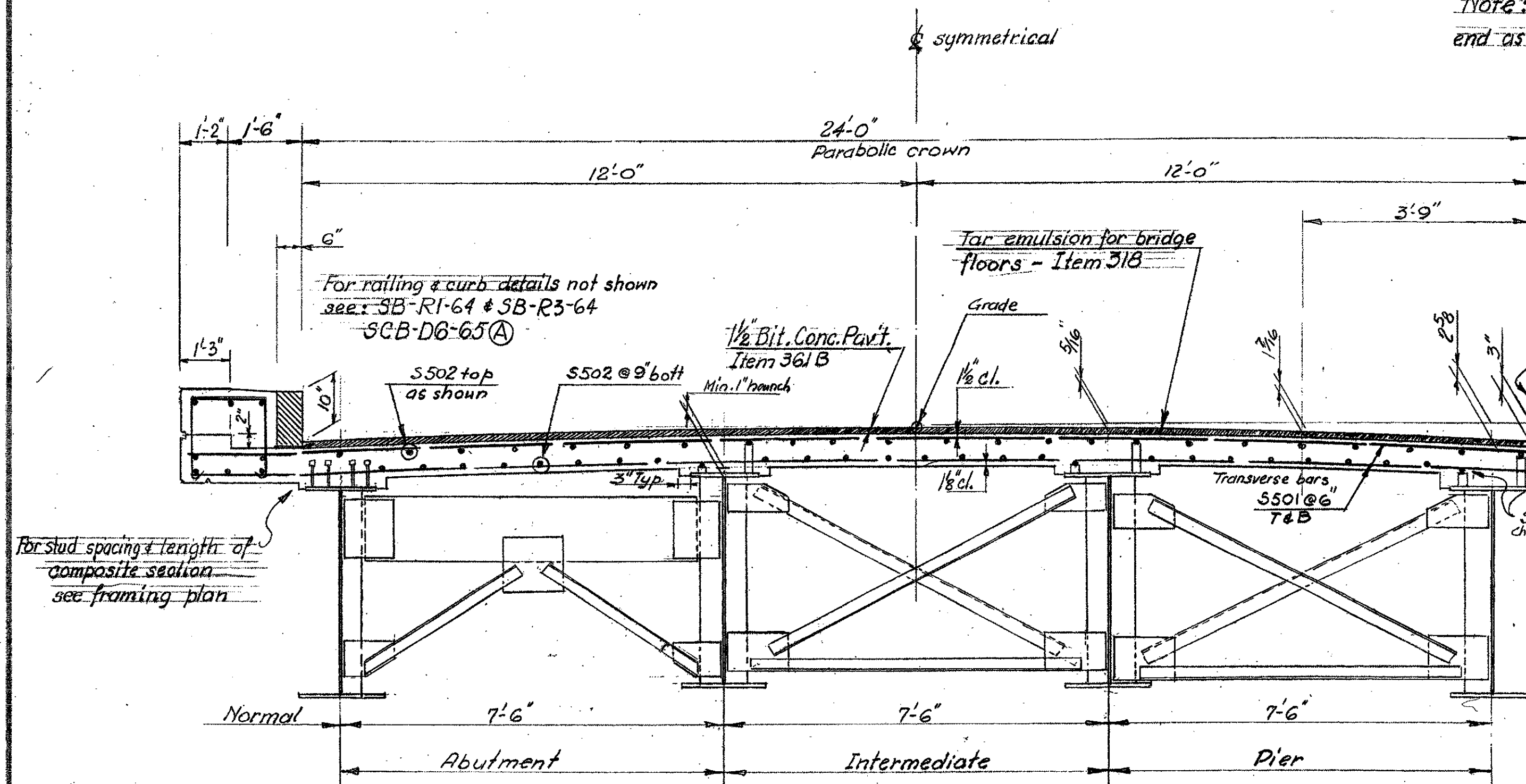
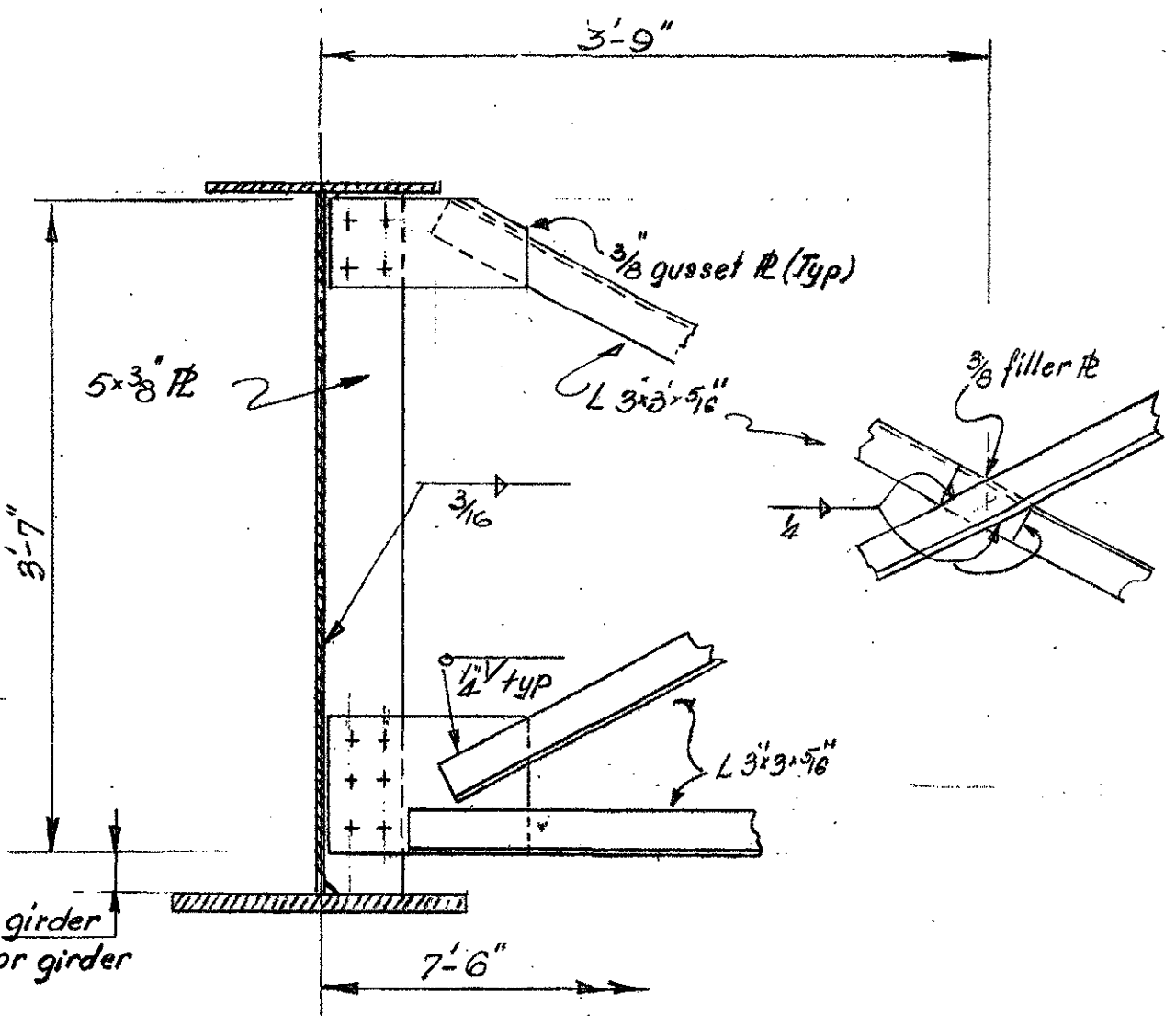


Note: Cut S501 transverse bars at skew end as required & use pieces on opposite end

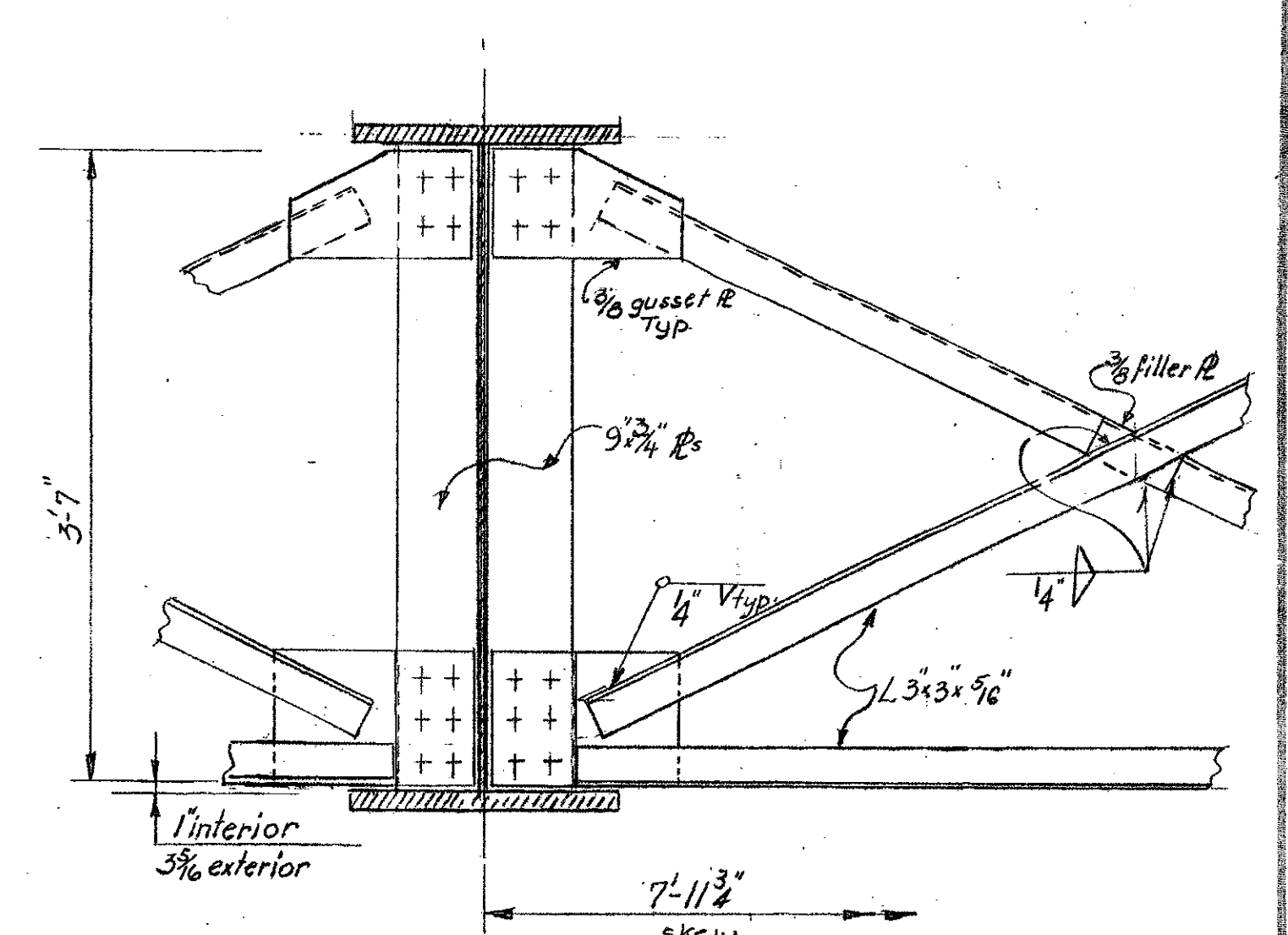


SECTION scale 1/2"=1ft.

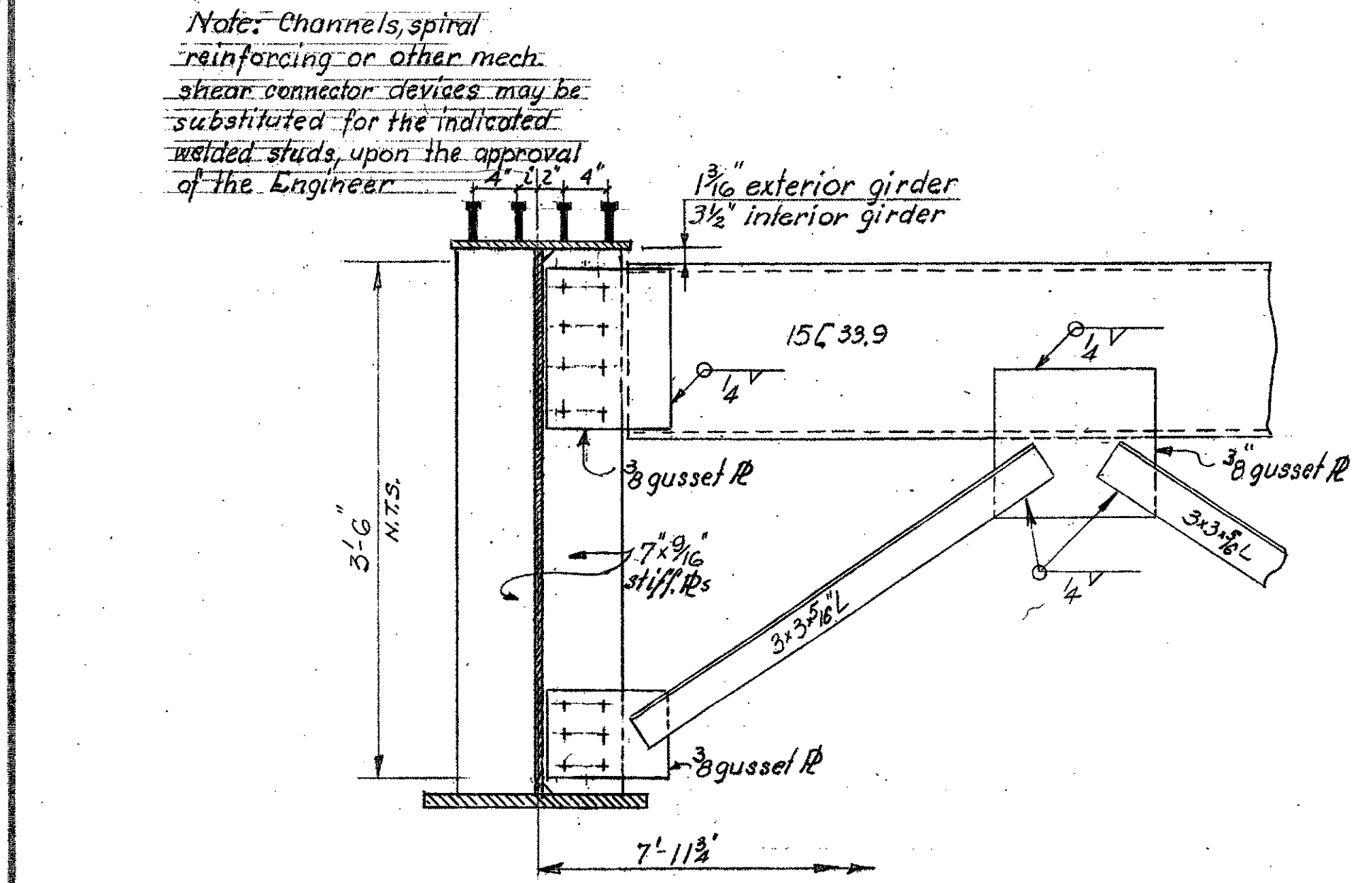
NOTE ①
 1/16" x 1/2" slots in R, 3/16" holes in L for 1/4" bolts @ 6'-0". Tack weld nut to bott. of L. Remove bolts after corner has taken initial set, and fill holes with hot poured rubber or polymer.



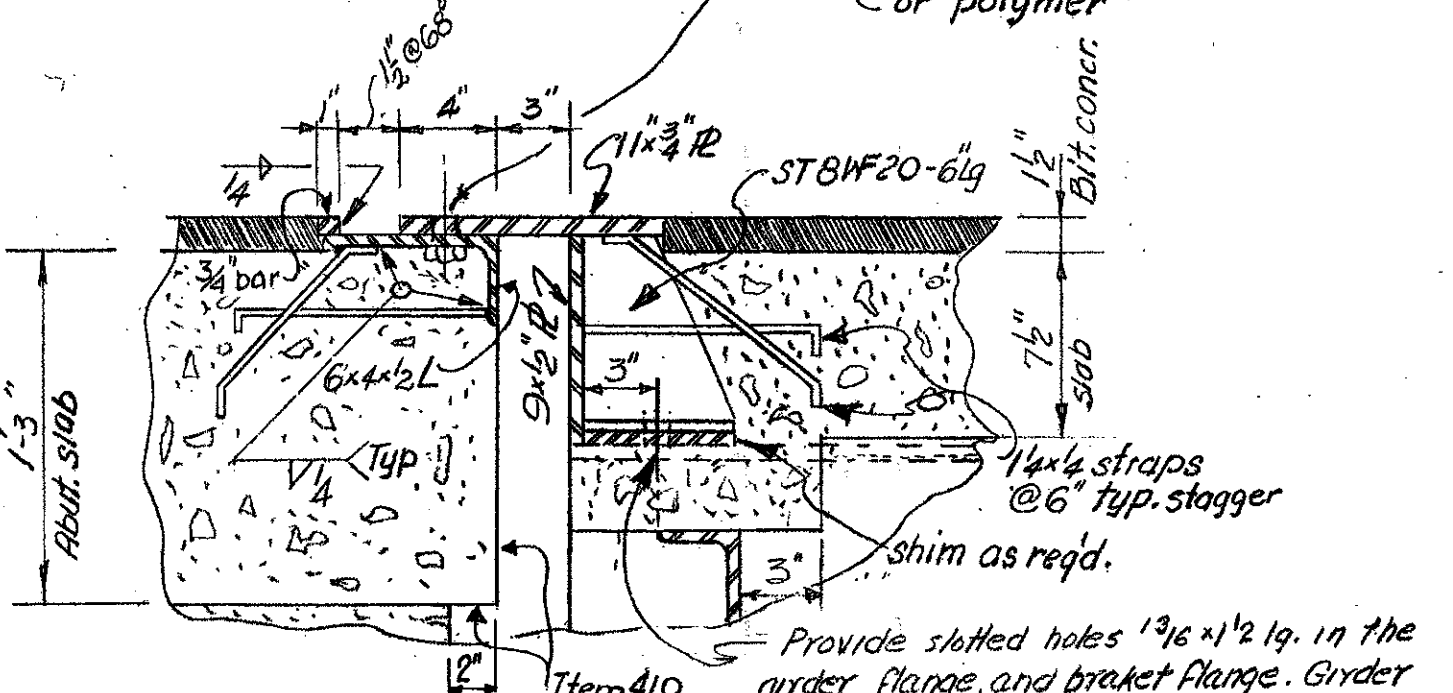
CROSS FRAME DETAILS scale 1/2"=1ft.



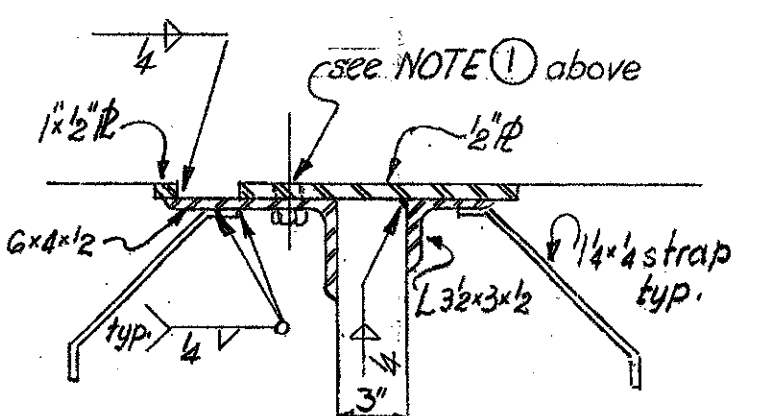
PIER



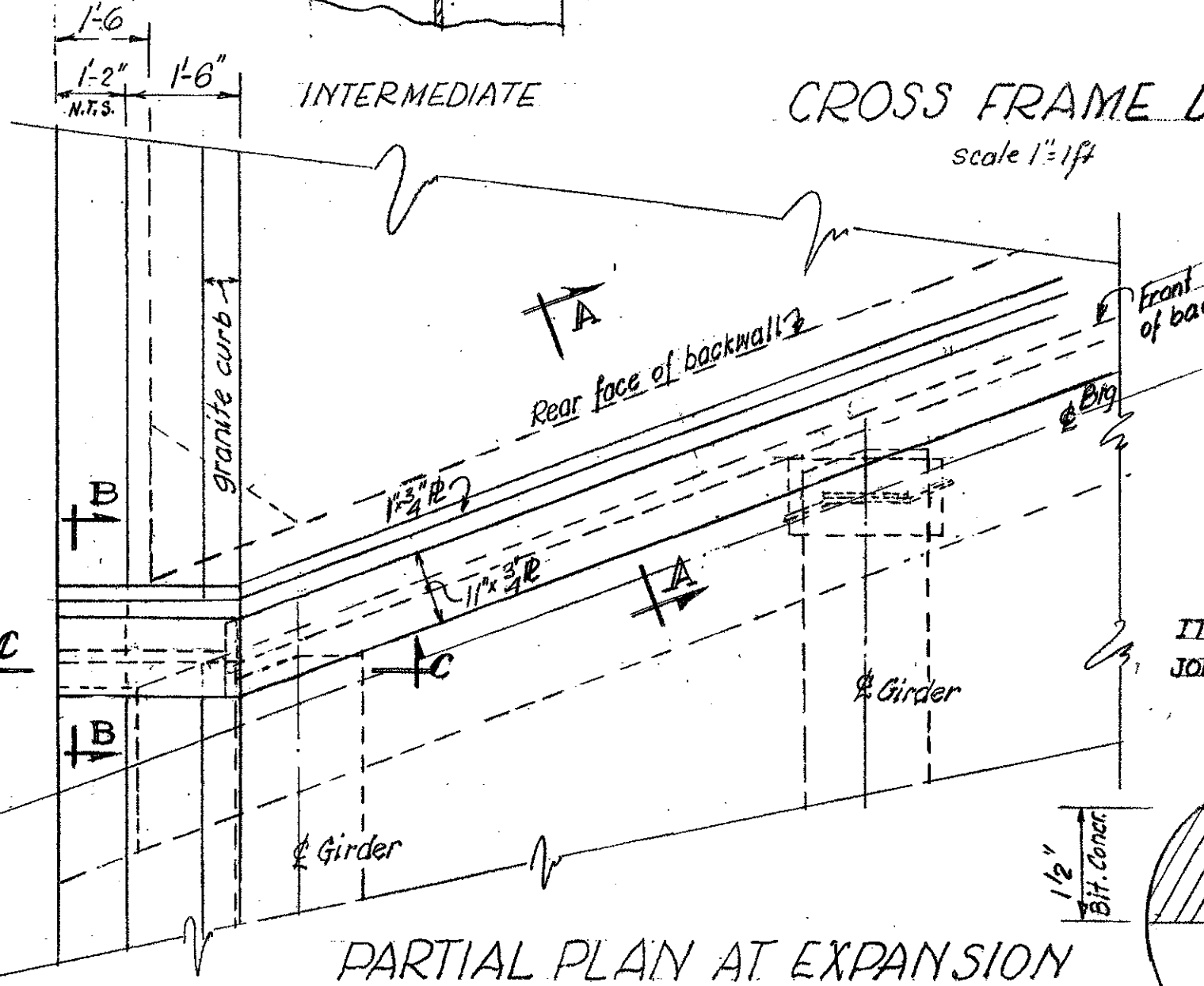
END DIAPHRAGM-ABUTMENTS scale 1/2"=1ft.



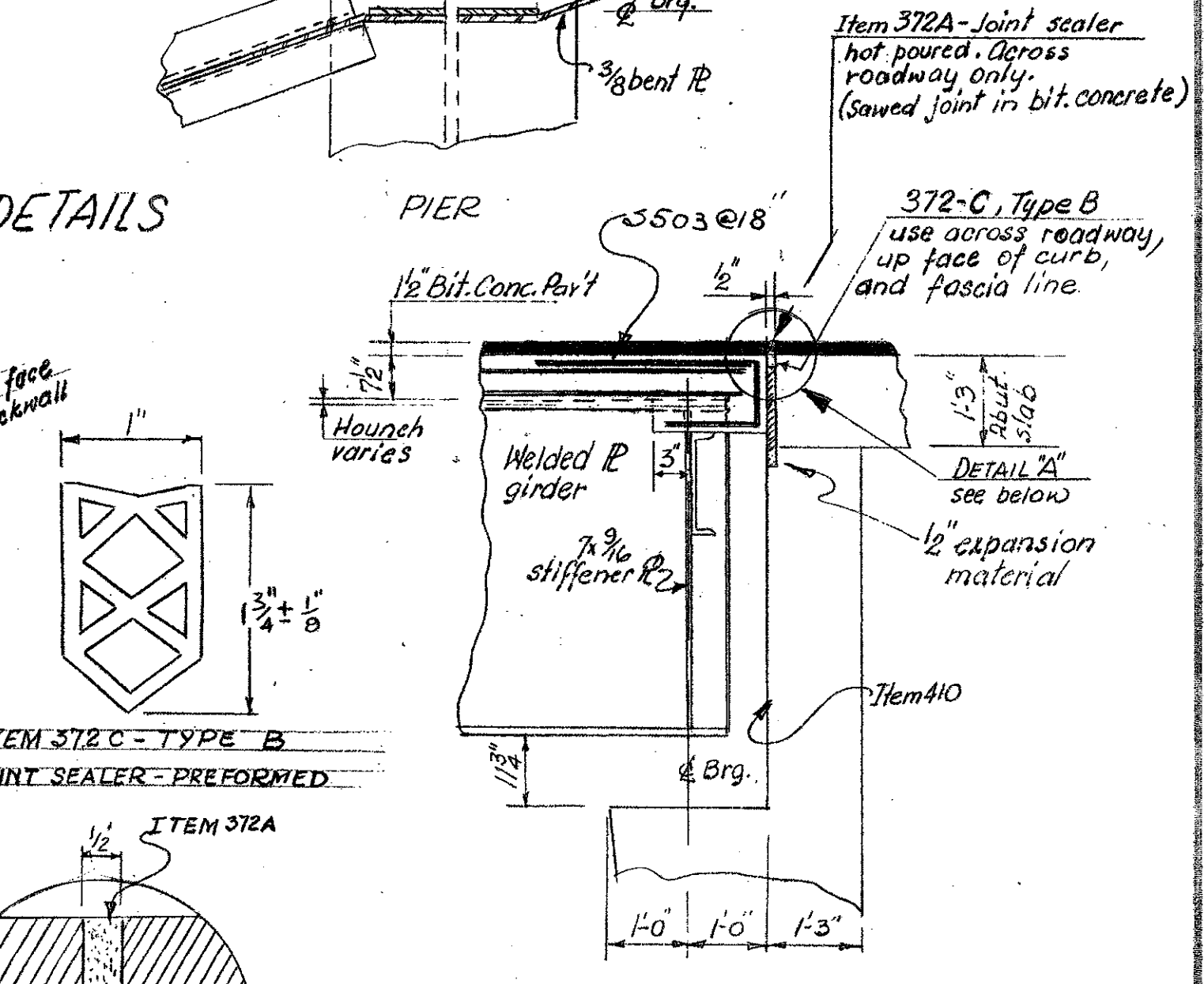
SECTION A-A scale 1/2"=1ft.



SECTION B-B scale 1/2"=1ft.



PARTIAL PLAN AT EXPANSION DAM- ABUTMENT 2 scale 1/2"=1ft.



FIXED ABUTMENT scale 1/2"=1ft.

Stage 1 Construction

Note: Channels, spiral reinforcing or other mech. shear connector devices may be substituted for the indicated welded studs, upon the approval of the Engineer.

Item 372A-Joint sealer hot poured. Across roadway only. (Sawed joint in bit. concrete)

372-C, Type B use across roadway, up face of curb, and fascia line.

BR #10

ITEM NO.	ITEM	UNIT	NET	TOTAL	FINAL
	CHAN. EXCAV. OF EARTH	C. Y.			
	CHAN. EXCAV. OF ROCK	C. Y.			
	UNCLASS. CHAN. EXCAV.	C. Y.			
	STRUCT. EXCAV.	C. Y.			
	CONC. CLASS AA (MOD.)	C. Y.			
	CONC. CLASS B (MOD.)	C. Y.			
	REINF. STEEL	LBS.			
	ASPHALTIC-ASB. COATING	S. Y.			
	TREATED TIMBER PILING	L. F.			
	SPLICES FOR STEEL PILING	EA.			
	STEEL PILING	L. F.			

THIS SHEET IS FOR INFORMATION PURPOSES ONLY
 HARTFORD-SHARON-ROYALTON I-79, RR. 089-108

STATE OF VERMONT
 DEPARTMENT OF HIGHWAYS

TOWN OF HARTFORD

ROUTE NO. 36 OVER INTERSTATE 89 STA.

TYP. SUPERSTRUCTURE DETAILS

SCALE: As noted