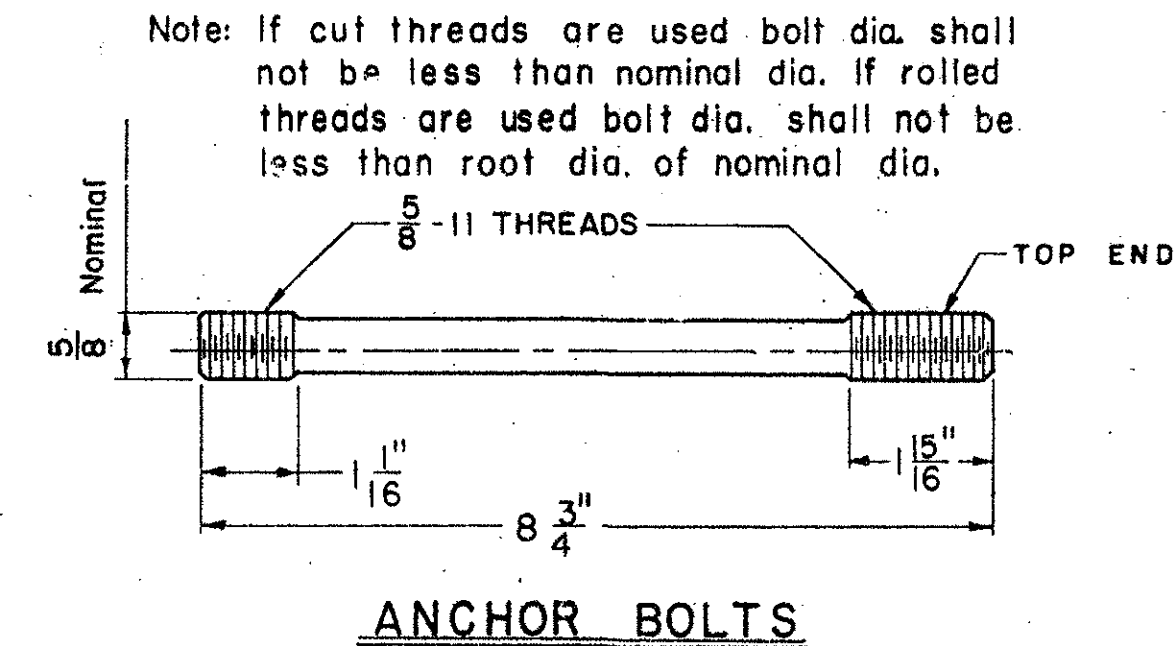
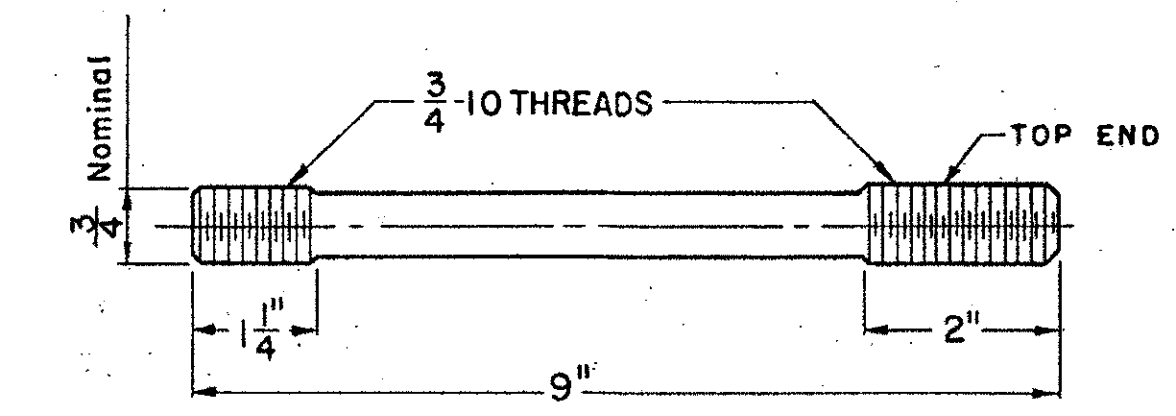
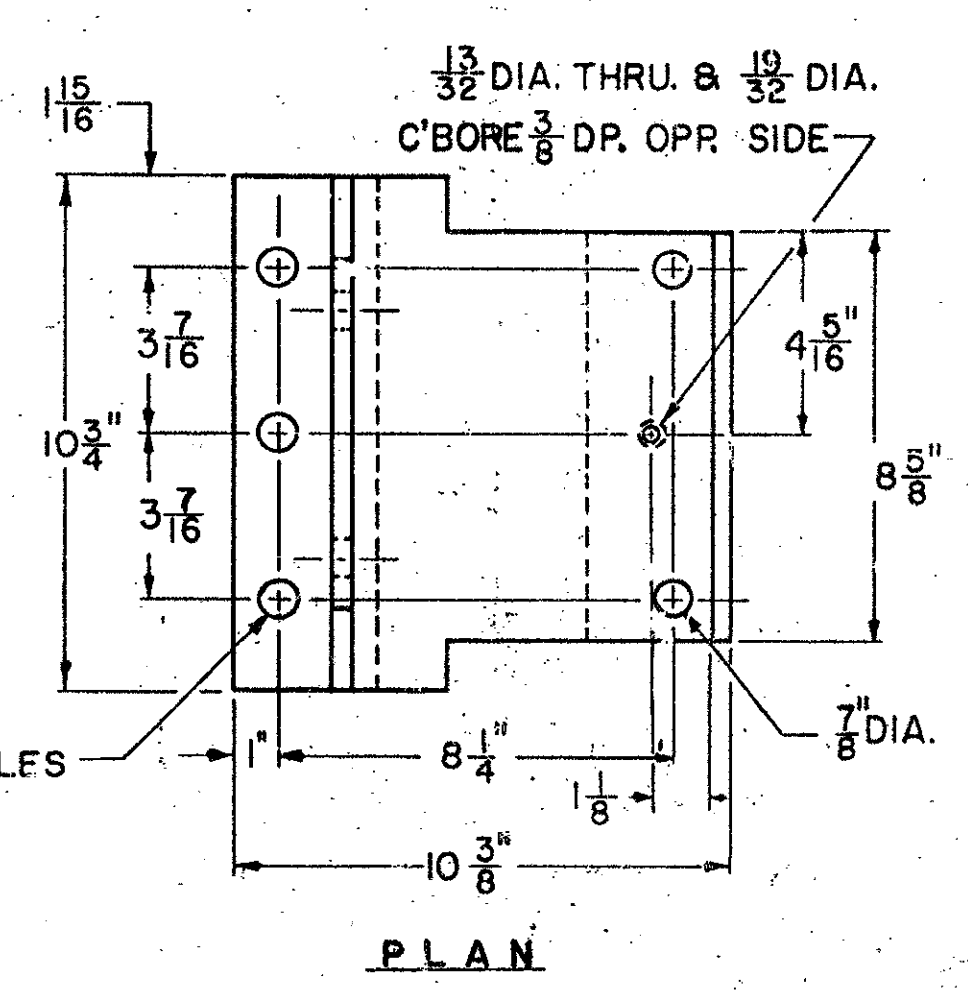
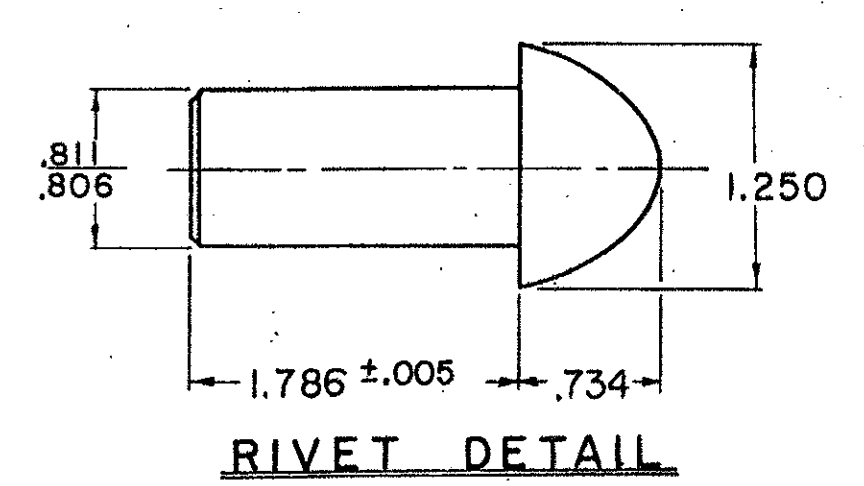
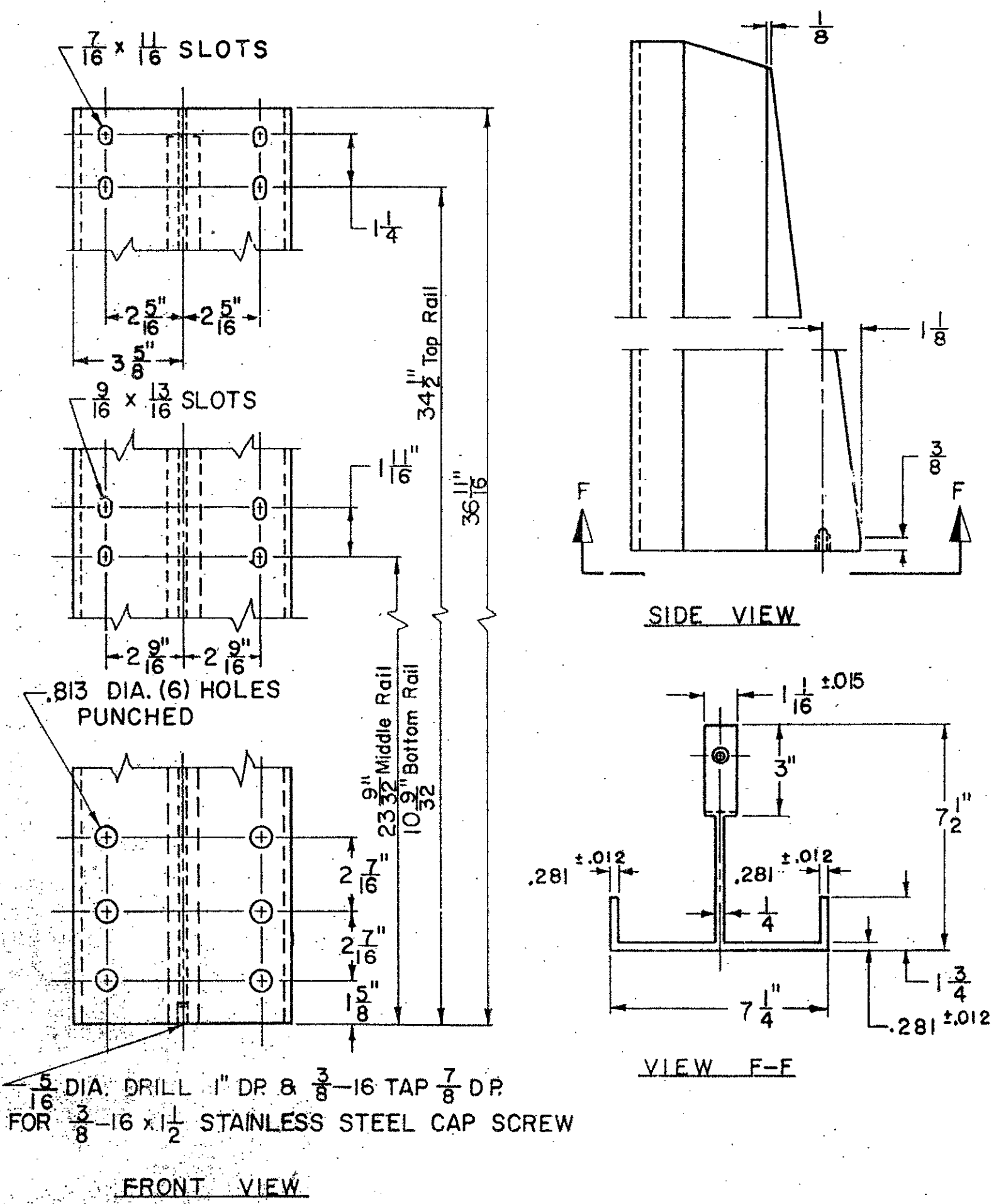


BARRIER RAIL SPLICE DETAILS

BARRIER RAIL END CAP

BARRIER RAIL SECTION

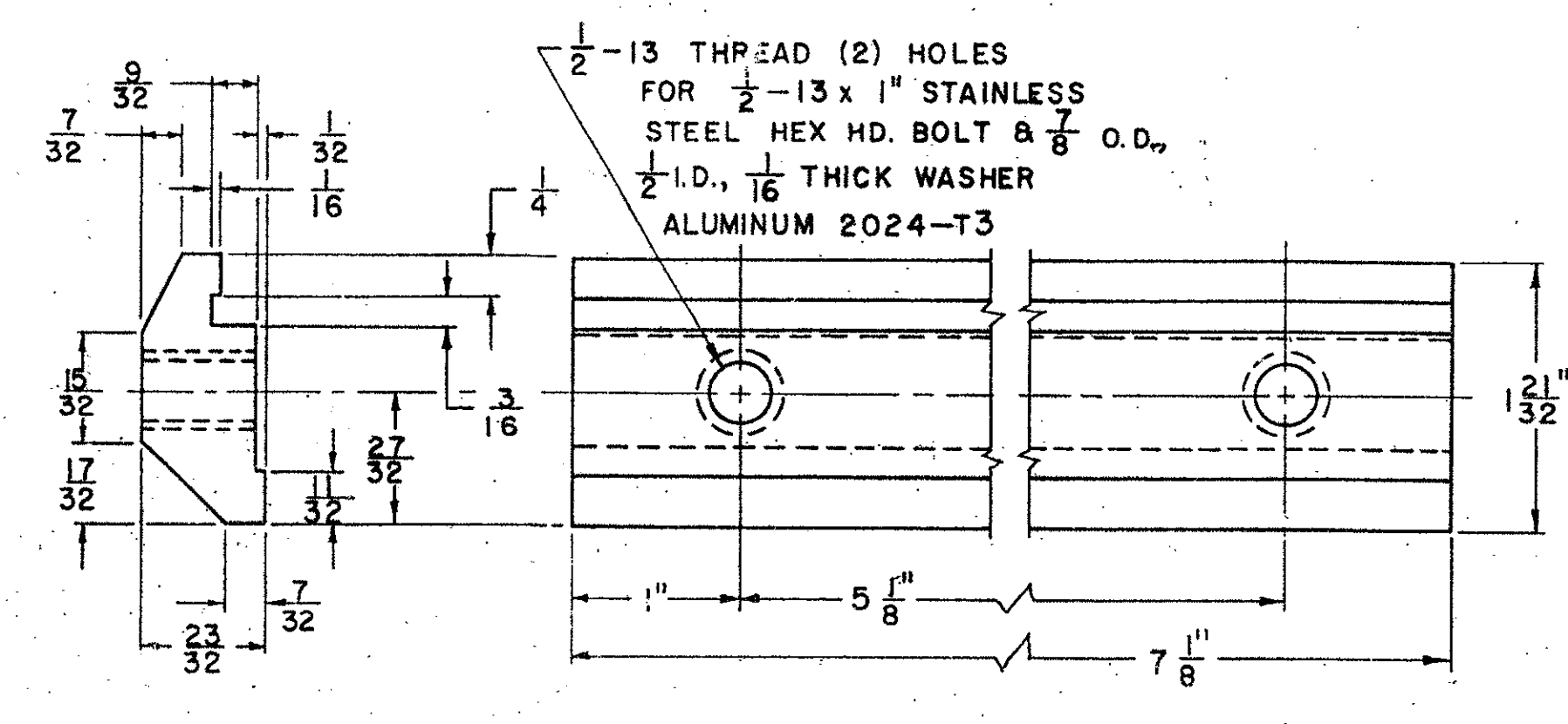
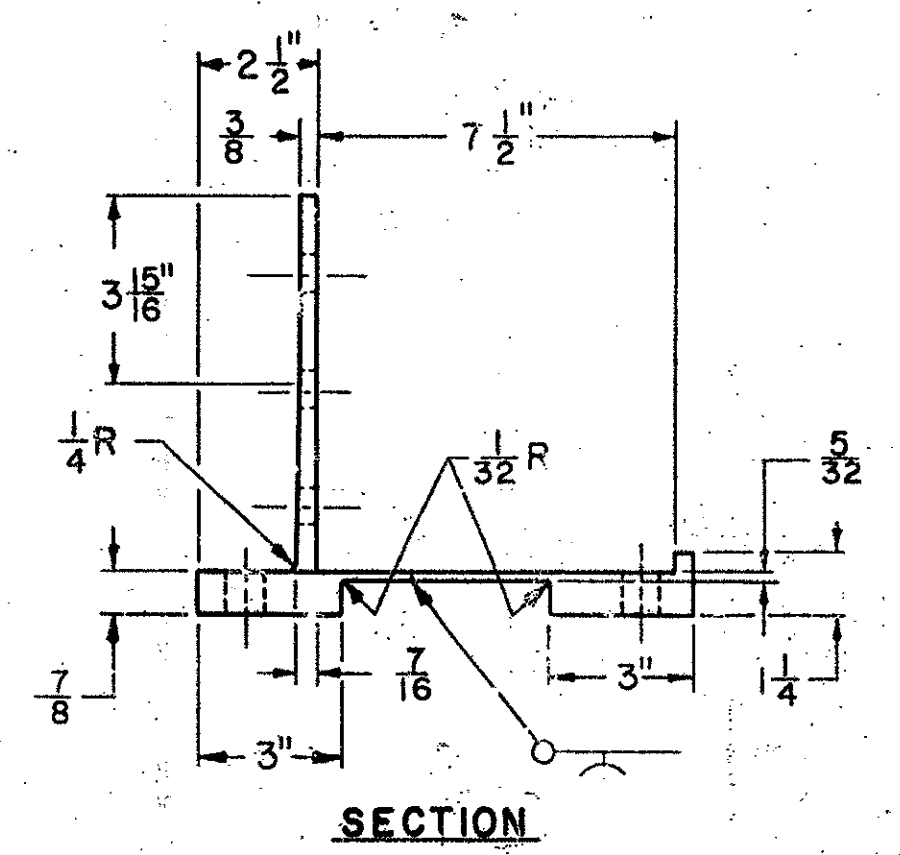
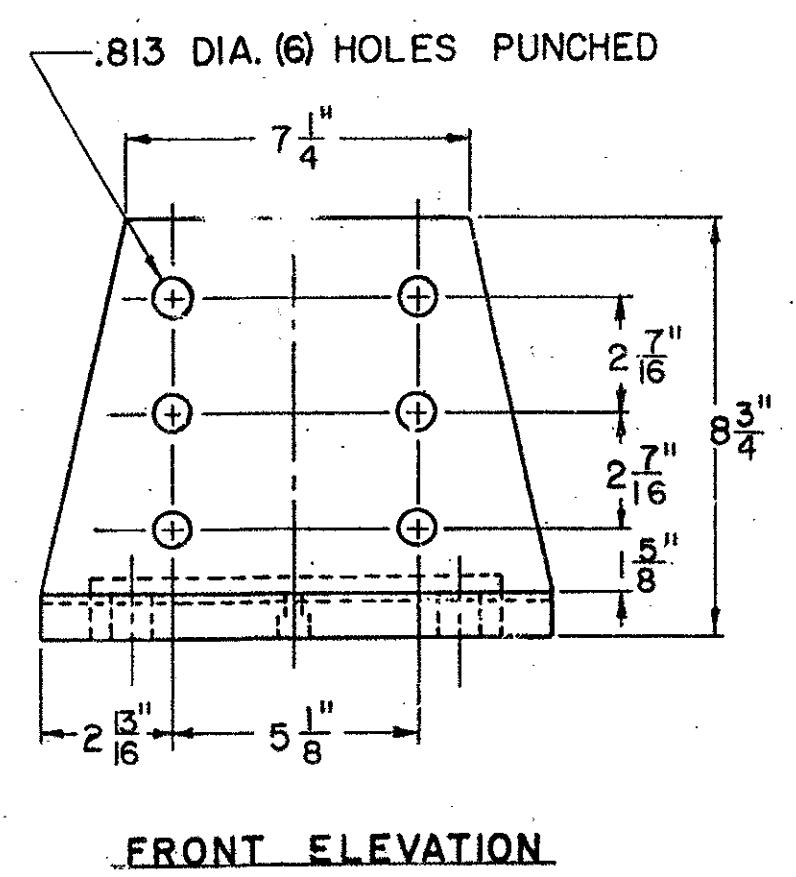
ANCHOR CHANNEL BARS



Note: If cut threads are used bolt dia. shall not be less than nominal dia. If rolled threads are used bolt dia. shall not be less than root dia. of nominal dia.

Notes for Anchor Bolt Nuts and Loose Washers

- 3/4 & 5/8 American Standard Finished Hexagon Steel Nuts on bottom end.
- 3/4 & 5/8 American Standard Finished Hexagon Thick Aluminum Nuts on top end.
- 3/4 & 5/8 American Standard Finished Hexagon Steel Jam Nuts on top of Anchor Channel Bars.



POST BASE DETAILS

POST CONNECTION

- Revisions & Corrections**
- Barrier Rail Depth increased to 4" for 8'-0" Post Spacing, Nov. 25, 1964, W.B.T.
 - Aluminum alloys revised to current ASTM Standards, Jan. 12, 1965, W.B.T.
 - Minor corrections to conform to manufacturer's current tooling practices, Jan. 28, 1965, W.B.T.
 - Post base anchor bolt hole size increased, Dec. 30, 1965, W.B.T.
 - " " " " " revised, Nov. 8, 1966, W.M.S.

Drawn By: WBT Oct. 1964
 Traced By: WBT Oct. 1964
 Checked By: WMS Oct. 1964
 Recommended for Approval: Louis M. Brien Bridge Engineer, 10/25/64, Date
 Recommended for Approval: R.H. Connors Assistant Chief Engineer, 10/25/64, Date
 Approved: A.D. [Signature] Chief Engineer, 10/30/64, Date

ALUMINUM BRIDGE RAILING DETAILS

HARTFORD - SHARON - ROYALTON
 1M IR 08Q - (B)
 THIS SHEET IS FOR INFORMATION PURPOSES ONLY

STATE OF VERMONT
 DEPARTMENT OF HIGHWAYS
 STANDARD STRUCTURES

SB-RI-64 Sheet 2 of 2