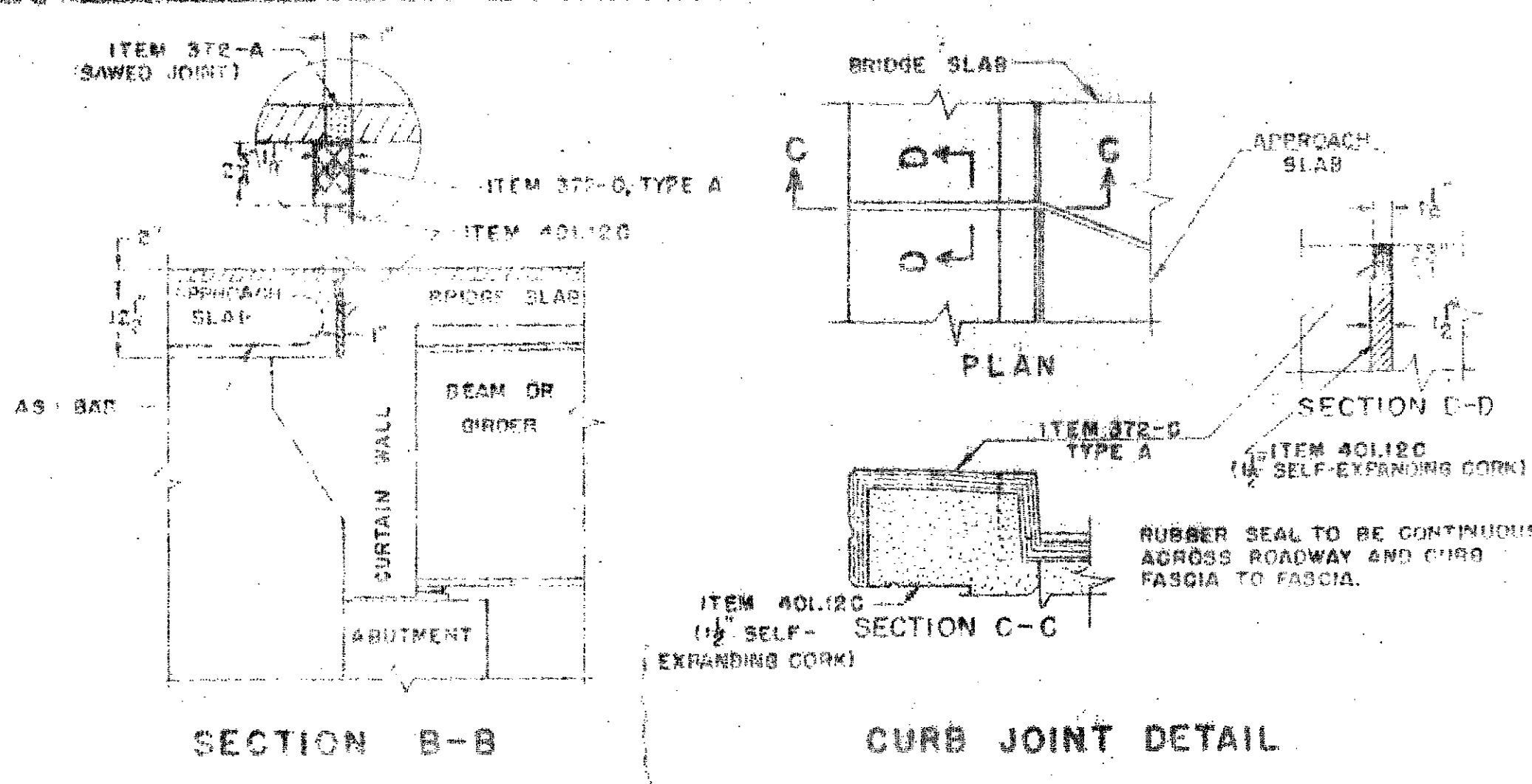
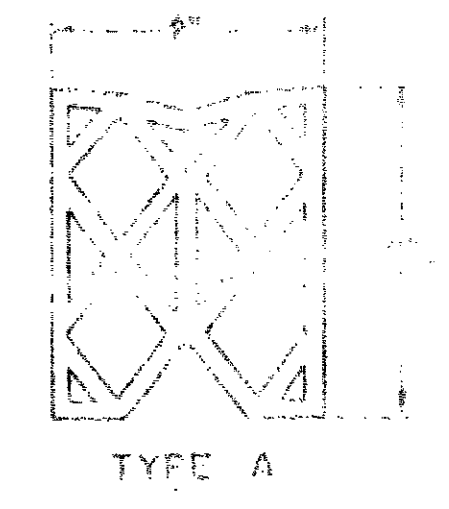


DETAIL "A" - SQUARE    DETAIL "B" - "L" LESS THAN 35'    DETAIL "C" - "L" GREATER THAN 35'

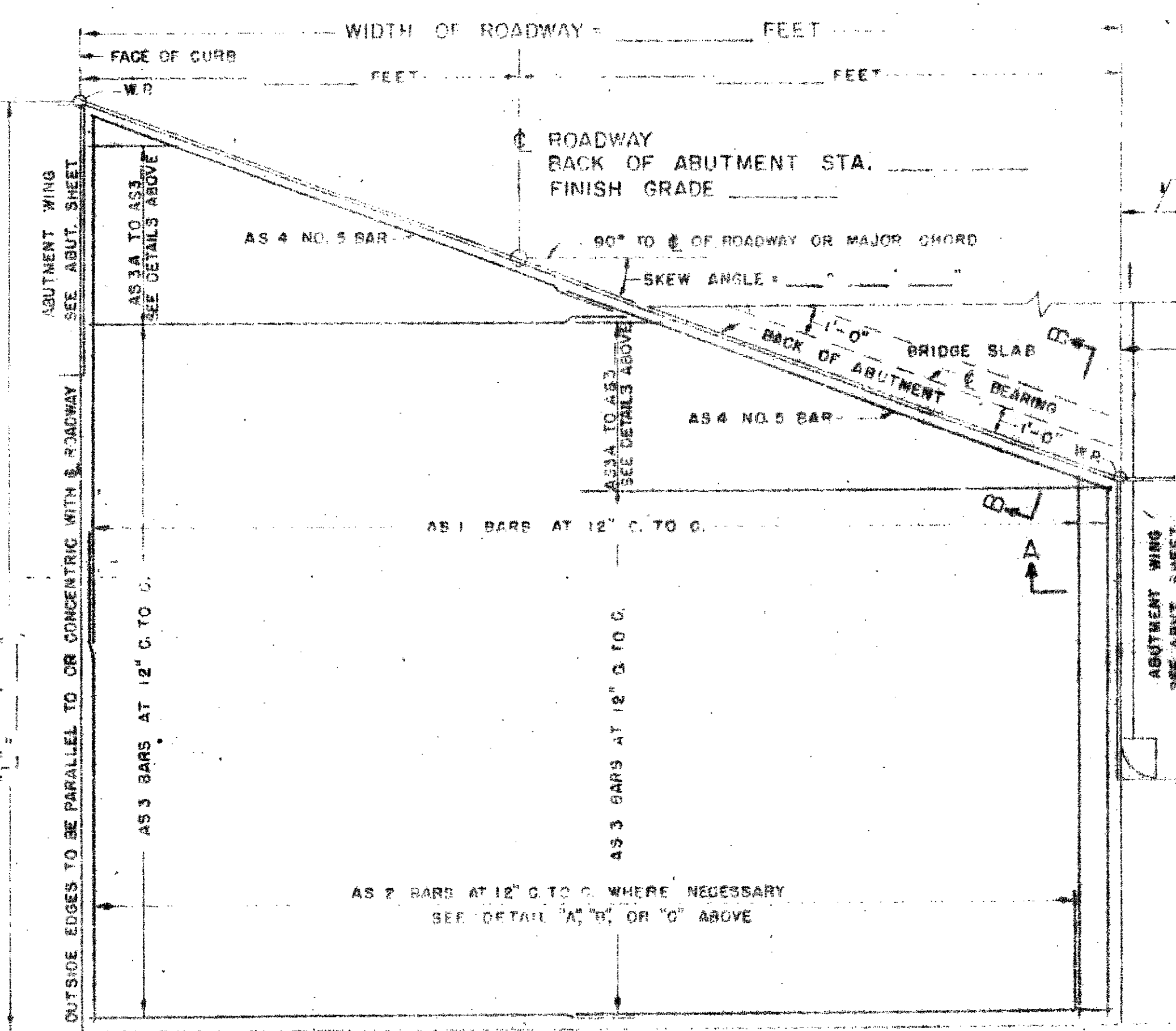
AS 2 TO AS 2 AT 12" TO BE USED WHEN "L" IS GREATER THAN 30'



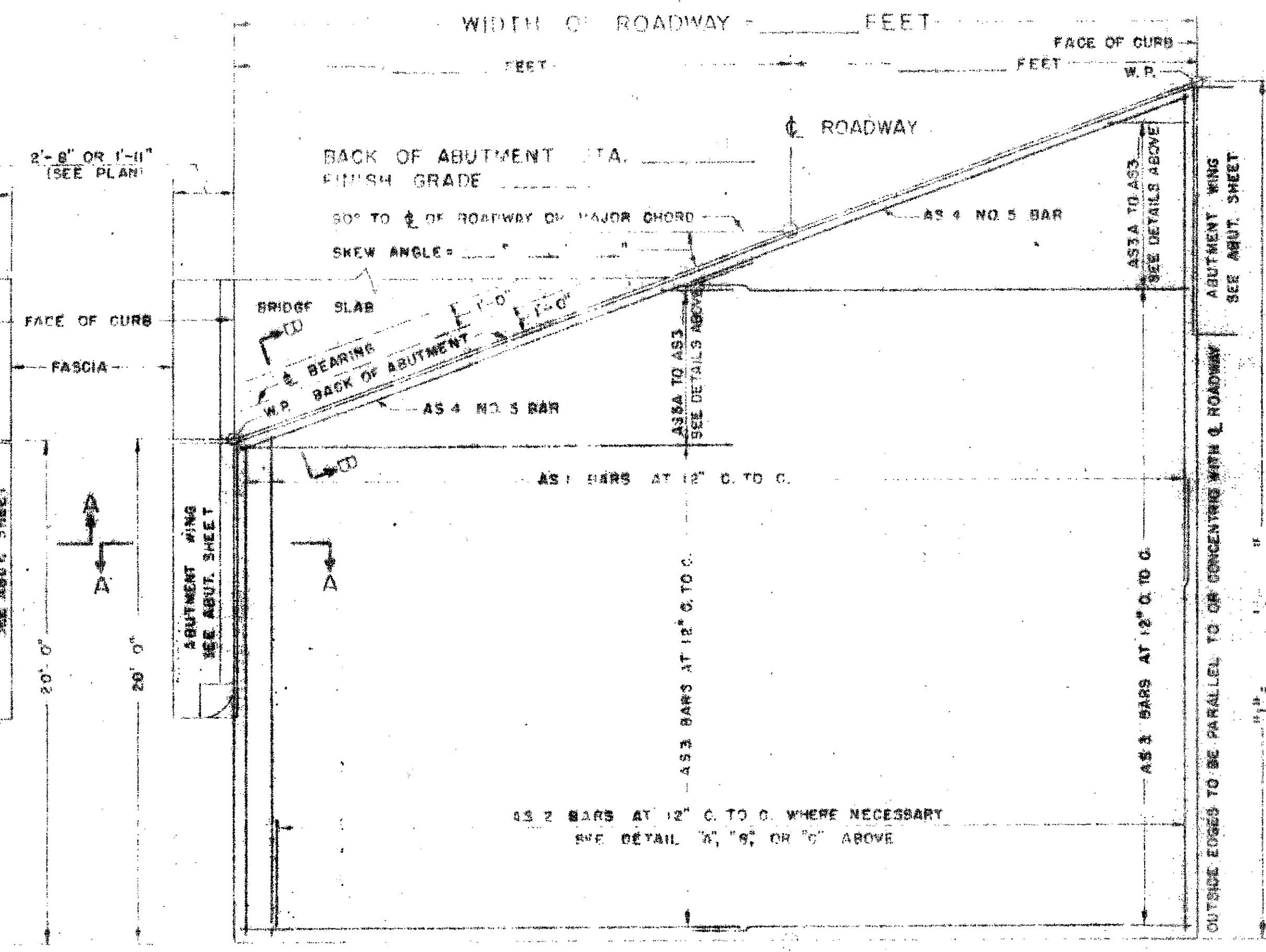
SECTION B-B    CURB JOINT DETAIL



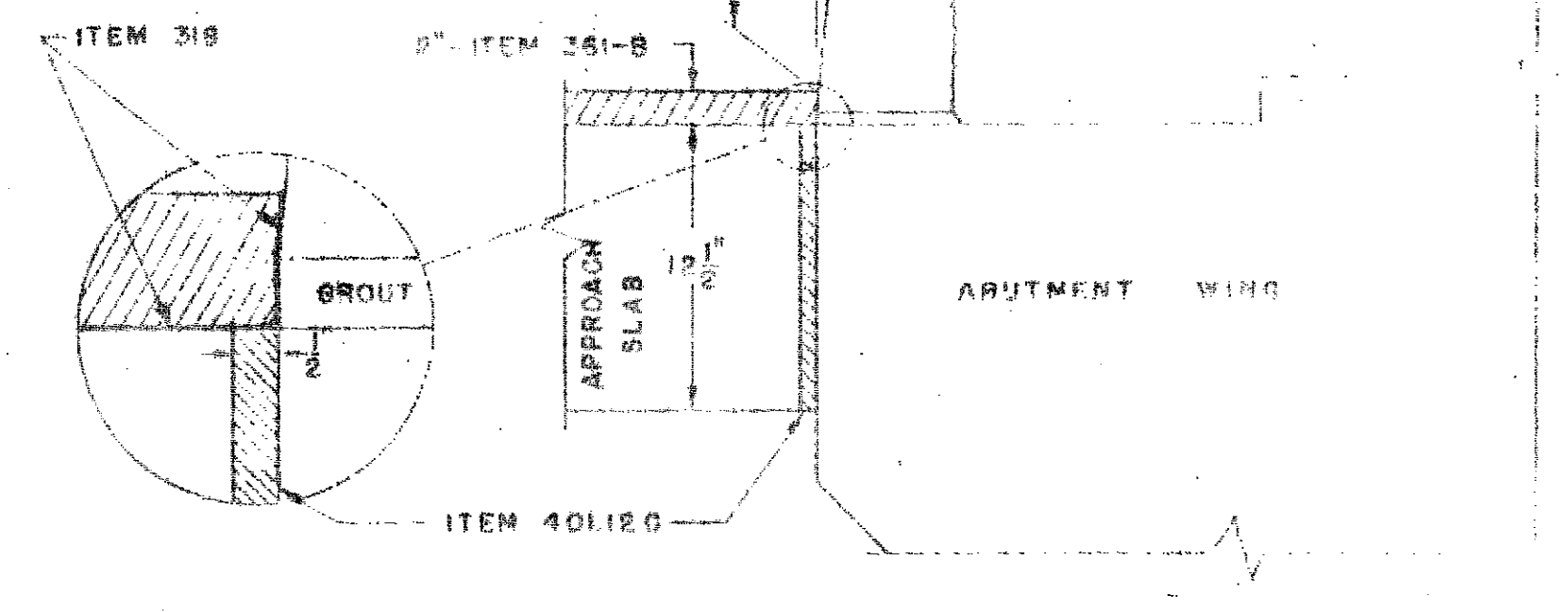
DETAILS - ITEM 372-C JOINT SEALER - PREPARED  
MATERIAL TO BE PREPARED ACCORDING TO OTHER SPECIFICATIONS THAT MAY BE REQUIRED.



PLAN VIEW TYPE 1



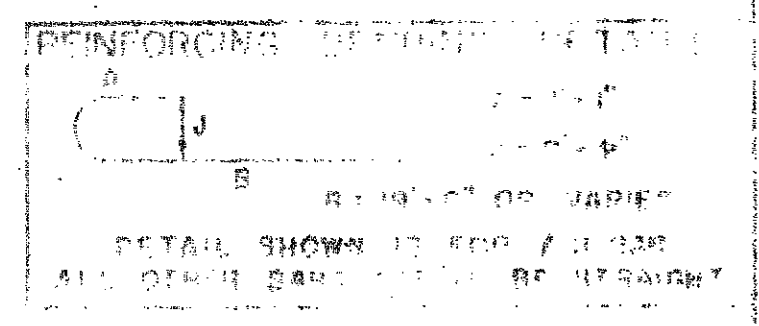
PLAN VIEW TYPE 2



SECTION A-A

GENERAL NOTES

1. ALL WORK AND MATERIALS SHALL CONFORM TO THE STATE OF VERMONT, DEPARTMENT OF HIGHWAYS, STANDARD SPECIFICATIONS FOR HIGHWAY AND BRIDGE CONSTRUCTION DATED APRIL 1964, AND THE A.A.S.H.O. SPECIFICATIONS DATED 1961, DESIGNED FOR HS 20-44 LOADINGS.
2. ALL REINFORCING STEEL SHALL BE DETAILED ON THE REINFORCING STEEL SCHEDULE. ALL BARS SHALL BE A MINIMUM OF 40 BAR DIAMETERS.

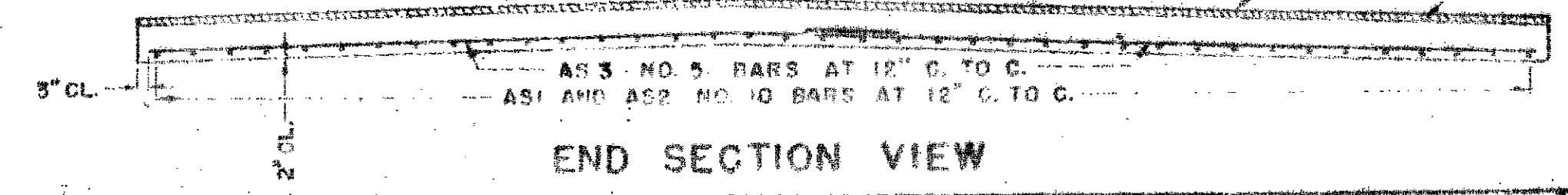


LIST OF QUANTITIES

| ITEM NO. | ITEM                            | UNIT |
|----------|---------------------------------|------|
| 318      | TAR EMULSION FOR BRIDGE FLOORS  | GAL. |
| 361-B    | BITUMINOUS CONCRETE PAVEMENT    | TONS |
| 372-A    | JOINT SEALER - HOT Poured       | L.F. |
| 372-G    | JOINT SEALER - PREPARED, TYPE A | L.F. |
| 400-B    | CONCRETE CLASS B                | CY.  |
| 408      | REINFORCING STEEL               | L.B. |

PROJECT \_\_\_\_\_  
TOWN OF \_\_\_\_\_  
ROUTE NO. \_\_\_\_\_ STA. \_\_\_\_\_

CROSS SLOPE OF APPROACH SLAB TO BE SAME AS BRIDGE



END SECTION VIEW

REVISIONS AND CORRECTIONS  
1. DIMENSIONS OF JOINT SEALER TYPE A REVISED 4/15/85 W.B.T.  
2. DIMENSIONS OF JOINT SEALER TYPE B REVISED 6/23/85 W.B.T.  
3. JOINT BETWEEN CURB AND SLAB REVISED, BITUMINOUS CONCRETE REVISED TO 2", QUANTITY TOTALS REMOVED. 12/7/85. W.B.T.

DRAWN BY: W.B.T. Jan. 1965  
TRACED BY: W.B.T. Jan. 1965  
CHECKED BY: W.M.S. Feb. 1965  
RECOMMENDED FOR APPROVAL: [Signature] 2/4/65  
RECOMMENDED FOR APPROVAL: [Signature] 2/4/65  
APPROVED BY: [Signature] 2/4/65

DETAILS OF APPROACH SLAB FOR \_\_\_\_\_ FOOT BRIDGE  
TO BE USED FOR BRIDGE AT STATION \_\_\_\_\_ LOCATION \_\_\_\_\_  
THIS SHEET IS FOR INFORMATION PURPOSES ONLY  
HARTFORD-SHARON-ROYALTON 1M IR 089-1(6)

STATE OF VERMONT  
DEPARTMENT OF HIGHWAYS  
STANDARD STRUCTURE  
SB-AS-€

Bridge Sheet No. 22113 Sheet 120 of 260