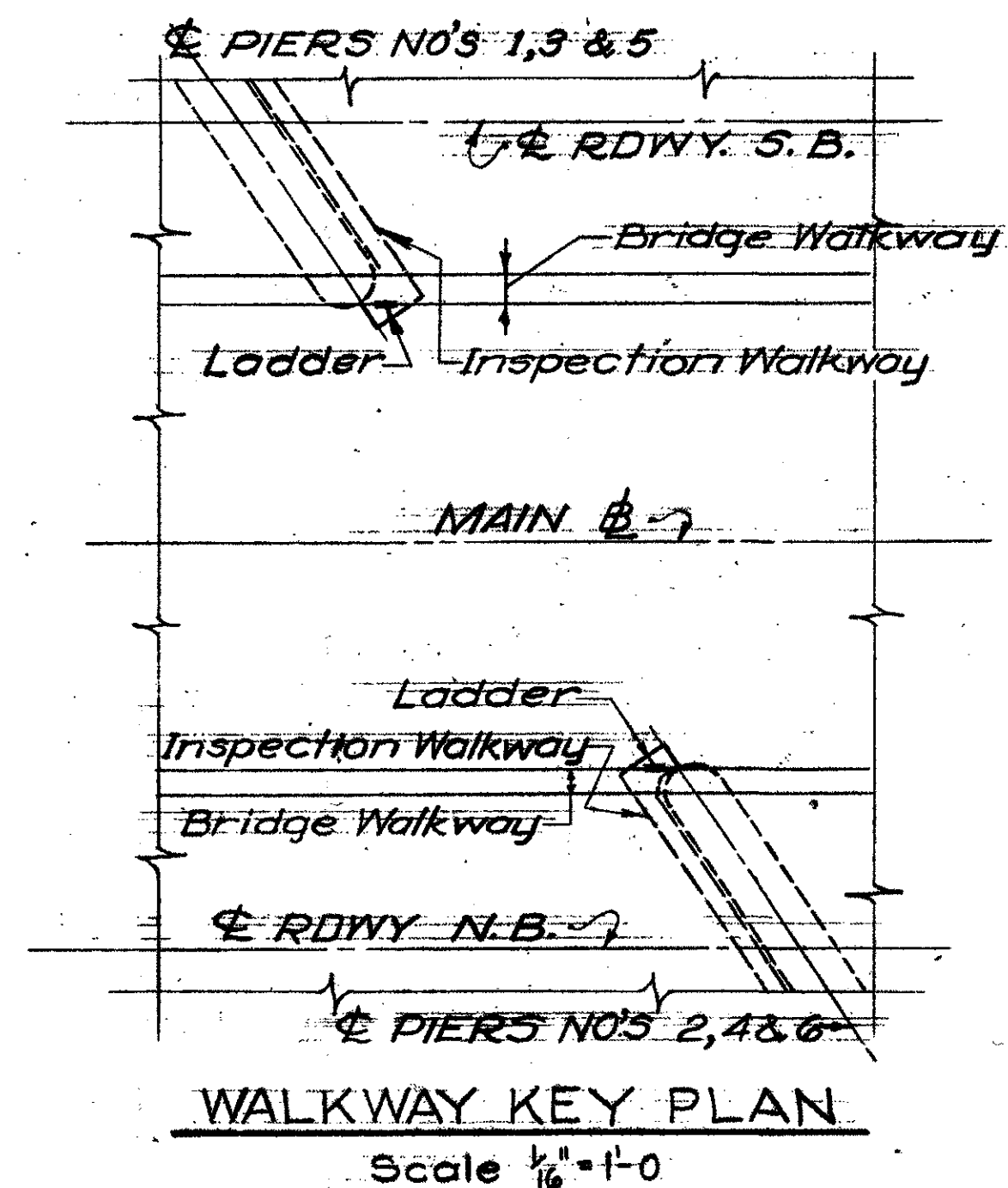
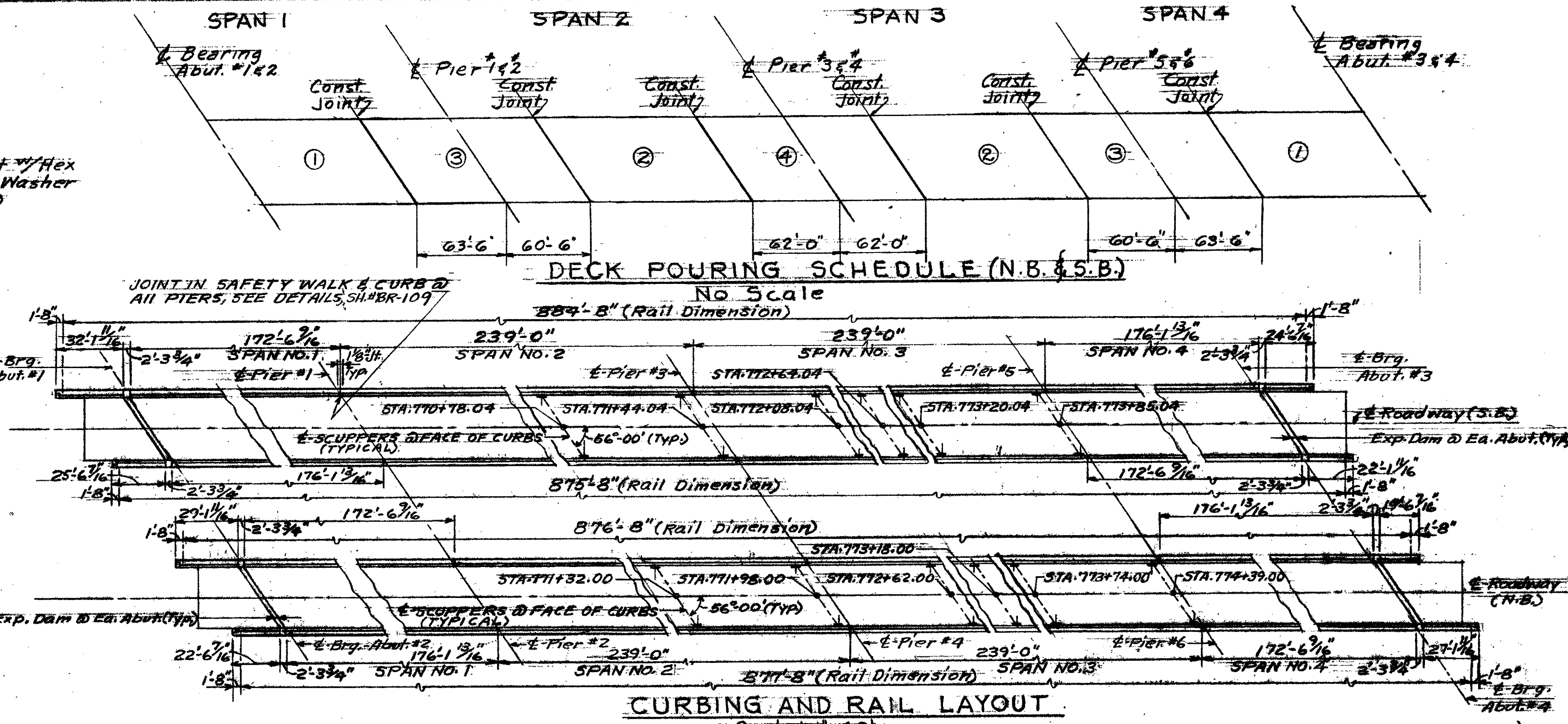
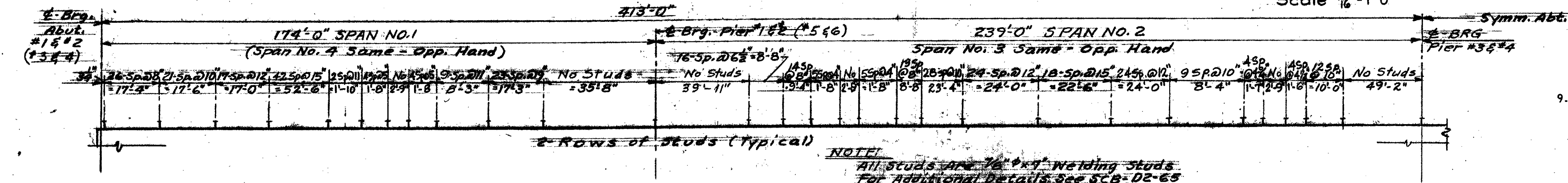


**NOTE:** Provide one (1) Ladder At Each Pier And Attachments Ladder to Alum. (6061-T6) or Alternate Lightweight Aluminum Alloys As Approved By The Engineer. Attachments to be A-36 Steel Galvanized to ASTM A-123. Length of Ladders To Be Determined in the Field And As Directed by the Engineer. Ladders Are To Extend From Top of Bridge Rail, as shown, to Deck of Walkways Below.

All walkway members shall be ASTM A-36 Steel, Galvanized after fabrication to ASTM A-123. Walkways are reqd. on PIERS 1 thru 6 incl. Payment For These Items: Walkway, Supports Grating, Ladder & Rails To Be Included in Structural Steel Item #404-B



- NOTES**
- FOR GENERAL NOTES SEE SH. # BR-100.
  - ALL RAILS TO BE SPLICED AT EXPANSION JOINTS WITH A 4" GAP AT THE SPLICE.
  - FOR RAILING DETAILS SEE STD. SH. # SB-R1-64 SH. 1 & 2 AND SB-R2-65.
  - FOR TYPICAL SLAB SECTION SEE SH. # BR-109.
  - ALL WALKWAY MEMBERS SHALL BE ASTM A-36. WALKWAYS ARE REQUIRED ON PIERS #1 THRU 6 INCLUSIVE.
  - STRAIGHT SECTIONS OF CURB SHALL BE FURNISHED IN RANDOM LENGTHS FROM 4 TO 10 FEET.
  - DETAILED DRAWINGS FOR THE LAYOUT OF THE GRANITE CURB, ITEM 556-C, SHALL BE SUBMITTED IN TRIPlicate TO THE STATE FOR APPROVAL PRIOR TO FABRICATION OR SHIPMENT.
  - ALL GALVANIZING TO MEET ASTM A-123 REQUIREMENTS.



9. SCUPPER LOCATIONS MAY BE ADJUSTED AS REQUIRED.

STATE OF VERMONT  
DEPARTMENT OF HIGHWAYS

PROJECT SHARON  
TOWN OF SHARON

ROUTE No. 1-89 STA. 772 + 00  
1-89 OVER VT. #14 & WHITE RIVER

PIER WALKWAY & MISCELLANEOUS DETAILS-N.B. & S.B.

SCALE AS SHOWN  
IN CHARGE ARNOLD KATZ

THIS SHEET IS FOR INFORMATION PURPOSES ONLY  
HARTFORD-SHARON-ROYALTON IM IR 089-11(8)