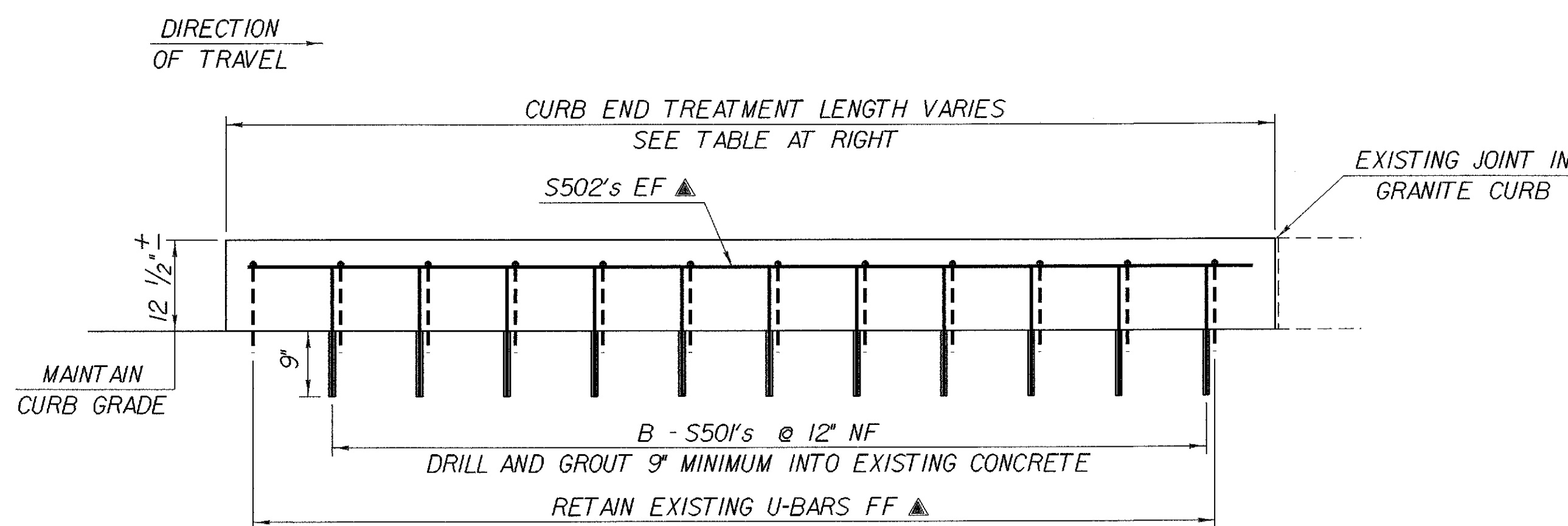


**CURB END TREATMENT PLAN
FOR 2'-8" WIDE CURBS**

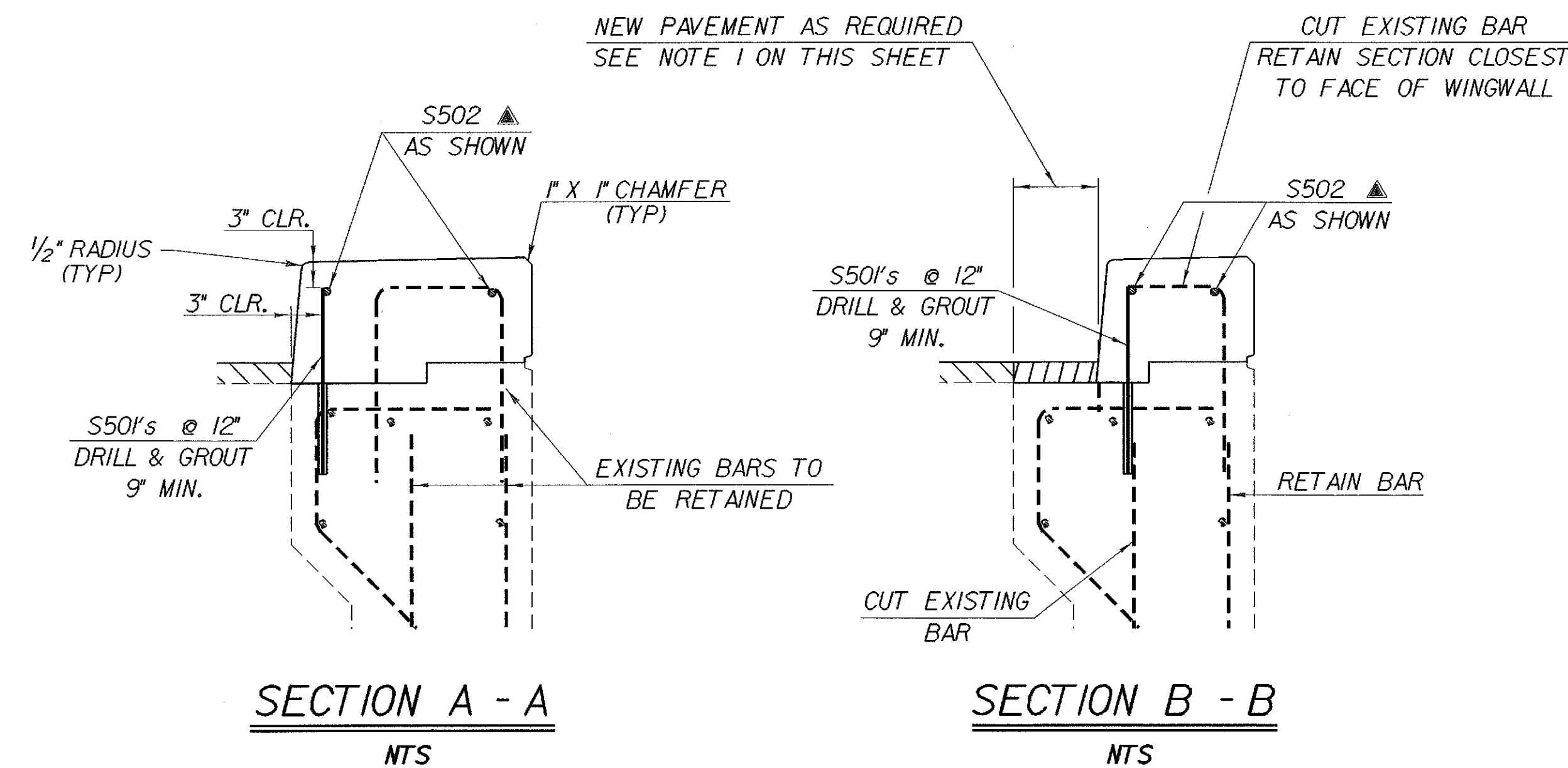
SCALE: 3/4" = 1'-0"



**TYPICAL CURB END
TREATMENT ELEVATION**

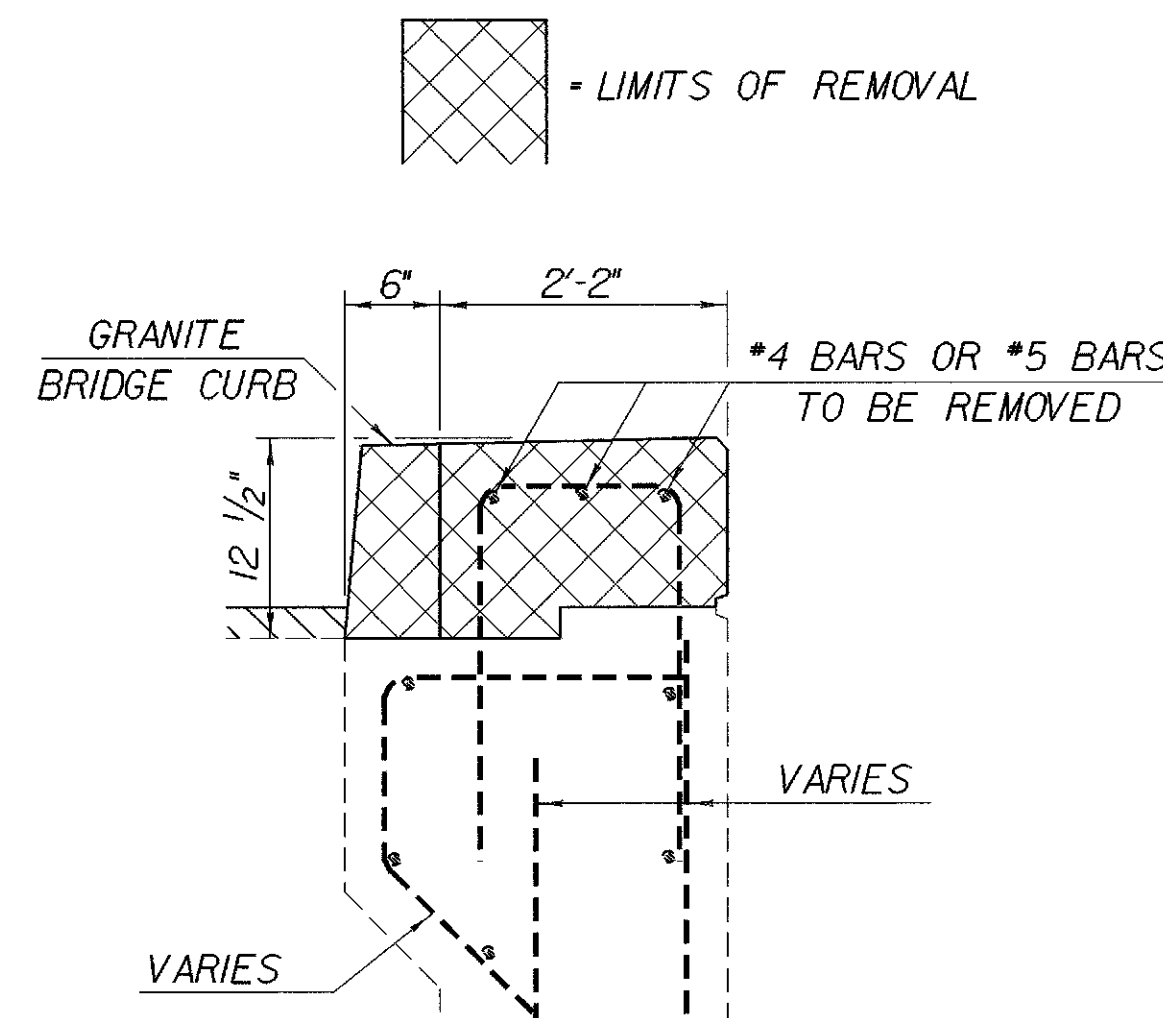
SCALE: 3/4" = 1'-0"

BRIDGE	CURB	A	B
21 (TH13)	W.B.LT.	9'-4 3/4"	10
21 (TH13)	W.B.RT.	9'-0"	10
21 (TH13)	E.B.LT.	9'-3 5/8"	10
21 (TH13)	E.B.RT.	9'-10 3/4"	10



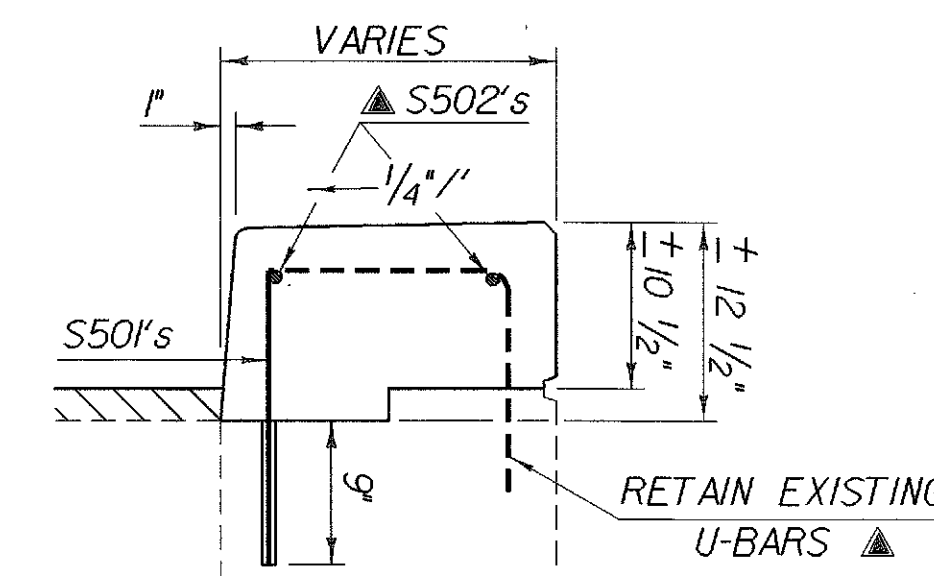
SECTION A - A
NTS

SECTION B - B
NTS



**ELEVATION VIEW OF
EXISTING CURB END**

NTS



**TYPICAL CURB END
TREATMENT SECTION**

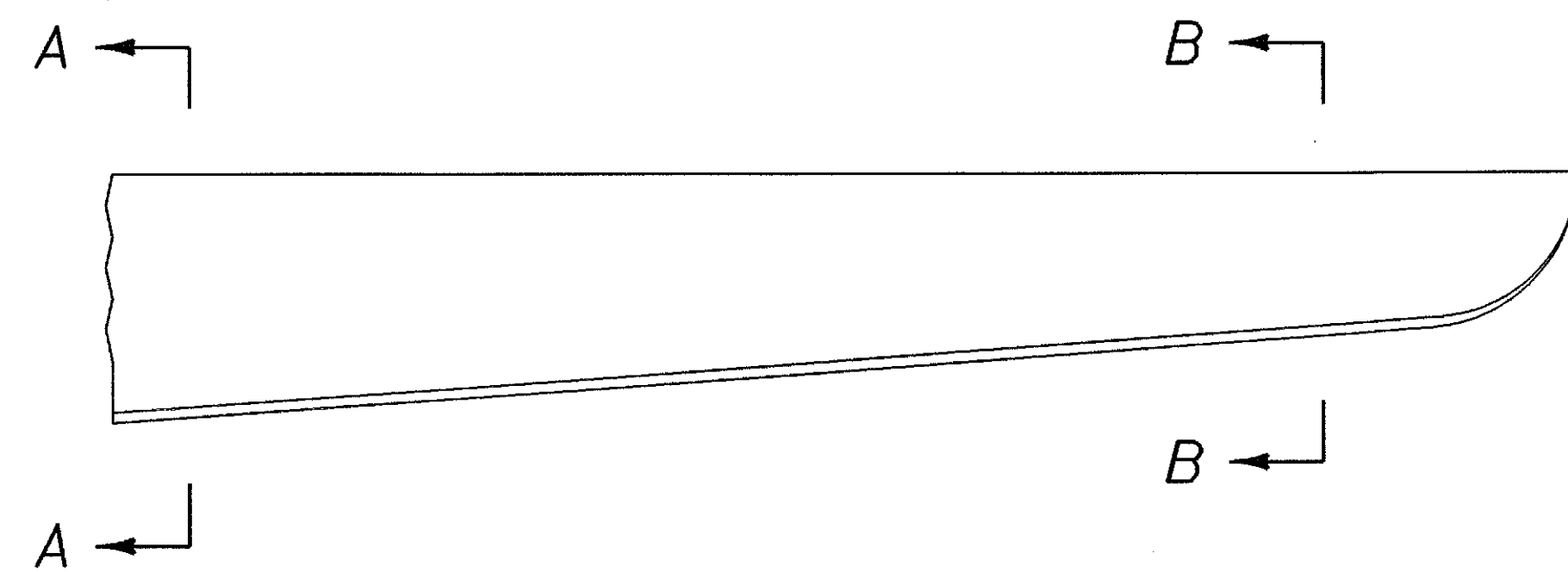
SCALE: 1" = 1'-0"

NOTE:

- NF = NEAR FACE
- FF = FAR FACE
- EF = EACH FACE
- ▲ = CUT TO FIT IN FIELD
- 3" CLEAR UNLESS OTHERWISE SPECIFIED

NOTES:

1. AREAS OF THE EXISTING WINGWALL OR APPROACH SLABS THAT BECOME EXPOSED AS A RESULT OF THE CONSTRUCTION OF THE NEW CURB END TREATMENTS WILL BE COATED WITH A LIQUID MEMBRANE PER SECTION 519 AND THEN PAVED.
2. ALL EXPOSED REINFORCING STEEL SHALL BE SAND BLASTED CLEAN. THE EXISTING CONCRETE AND ALL REINFORCING STEEL SHALL BE THOROUGHLY WETTED AND THE CONCRETE COATED WITH NEAT CEMENT GROUT APPLIED AS PER SUBSECTION 501.3(b) OF THE STANDARD SPECIFICATIONS. PAYMENT FOR THE WORK WILL BE SUBSIDIARY TO ITEM 501.60, "SILCA FUME CONCRETE".
3. REINFORCING STEEL SHALL HAVE 3" CLEAR COVER EVERYWHERE UNLESS OTHERWISE NOTED.



**TYPICAL CURB END
TREATMENT PLAN**

**STATE OF VERMONT
AGENCY OF TRANSPORTATION**

Town Of HARTFORD-SHARON-ROYALTON	Bridge No. 21
Highway No. I-89	Log Sta. Surv. Sta.
CURB END DETAILS FOR BRIDGE 21 (MM 17.5) T.H. 13 OVER I-89	
Designed By C. MEUNIER	Drawn By S. MAGNAN
Checked By J.P. SPILAK	Bridge Design Supervisor G.S. ROGERS
Date 2/95	Date 2/95
PROJECT HARTFORD-SHARON-ROYALTON	PROJECT NO. IM IR 089-1(B)
I.G.C. \\\\cadd\fillingcabinet\87a008\Structures\sa008d11.dgn sa008ce61	
Bridge Sheet No. BR 133	Sheet 90 of 260