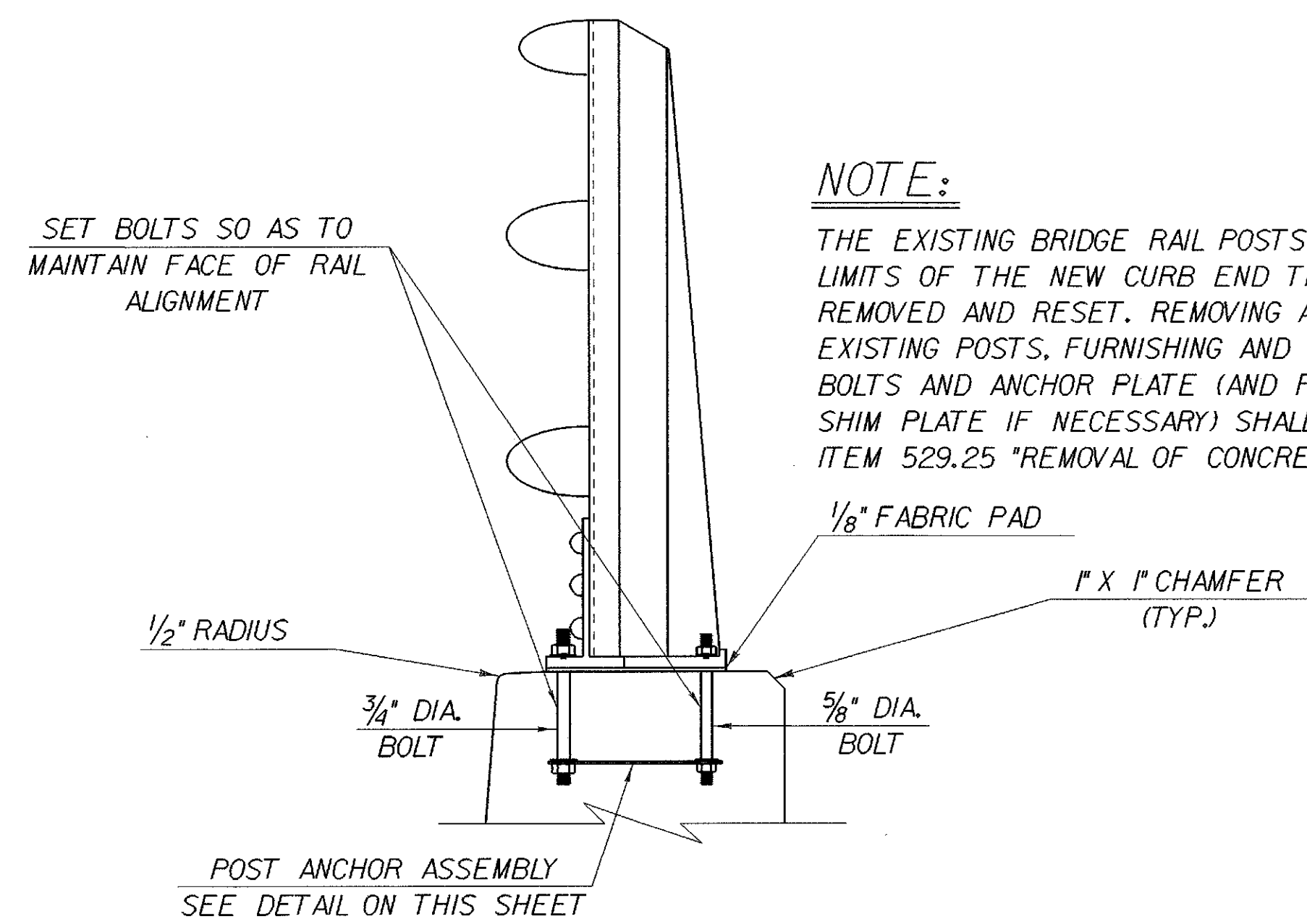


**END POST RELOCATION DETAIL**

N T S

BRIDGE	CURB	A	B	C	D	E
10 (TH 36)	N.W.COR.	1'-0"	2'-8"	9'-0"	1'-2"	2'-8"
10 (TH 36)	N.E.COR.	1'-1/4"	2'-8"	9'-1/4"	1'-2"	2'-8"
10 (TH 36)	S.W.COR.	1'-0"	2'-8"	9'-0"	1'-2"	2'-8"
10 (TH 36)	S.E.COR.	1'-0"	2'-8"	9'-0"	1'-2"	2'-8"
21 (TH 13)	S.W.COR.	1'-10 7/8"	2'-8"	6'-10 7/8"	1'-2"	2'-8"
21 (TH 13)	S.E.COR.	1'-8 3/8"	2'-8"	7'-9 5/8"	1'-2"	2'-8"
21 (TH 13)	N.W.COR.	1'-6"	2'-8"	6'-2 3/8"	1'-2"	2'-8"
21 (TH 13)	N.E.COR.	1'-8 3/8"	2'-8"	7'-10 7/8"	1'-2"	2'-8"

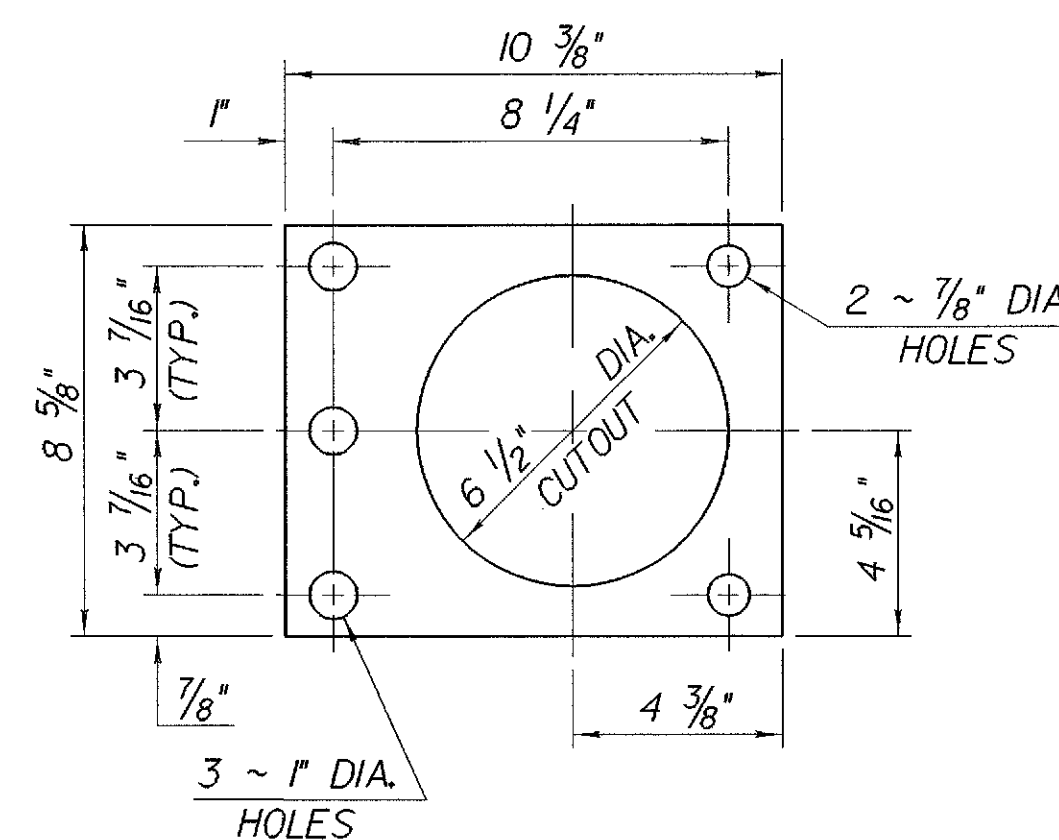


**NOTE:**

THE EXISTING BRIDGE RAIL POSTS THAT ARE WITHIN THE LIMITS OF THE NEW CURB END TREATMENT SHALL BE REMOVED AND RESET. REMOVING AND RESETTING THE EXISTING POSTS, FURNISHING AND INSTALLING NEW ANCHOR BOLTS AND ANCHOR PLATE (AND FABRIC PAD AND ALUMINUM SHIM PLATE IF NECESSARY) SHALL BE SUBSIDIARY TO THE ITEM 529.25 "REMOVAL OF CONCRETE OR MASONRY".

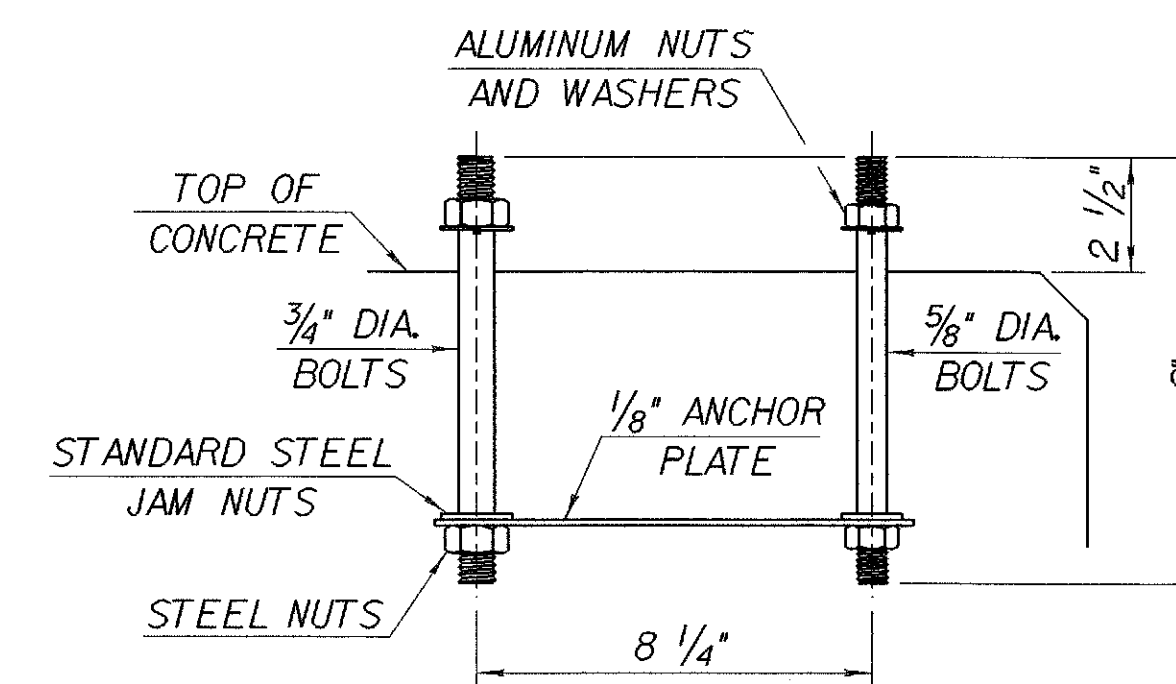
**TYPICAL POST RESET IN NEW CURB END TREATMENT**

N T S



**ANCHOR PLATE**

SCALE: 3" = 1'-0"



**POST ANCHOR ASSEMBLY**

SCALE: 3" = 1'-0"

**STATE OF VERMONT  
AGENCY OF TRANSPORTATION**

Town Of **HARTFORD-SHARON-ROYALTON** Bridge No. <sup>10 (TH 36) &</sup> <sub>21 (TH 13)</sub>

Highway No. **189** Log Sta. \_\_\_\_\_

Surv. Sta. \_\_\_\_\_

**CURB END DETAILS FOR BRIDGES 10 & 21**

**T.H. 36 OVER I-89 AND T.H. 13 OVER I-89**

Designed By **C. MEUNIER** Drawn By **M. PELOQUIN**

Checked By **J.P. SPILAK** Date **2/95** Bridge Design Supervisor **G.S. ROGERS** Date **2/95**

PROJECT **HARTFORD-SHARON-ROYALTON** PROJECT NO. **IM IR 089-(K8)**

I.G.C. <sup>\\661\_cadd\11\ingcabinet\87a008\Structures\sa008d1.dgn</sup> sa008ce5J

Bridge Sheet No. **BR 132** Sheet **89** of **260**