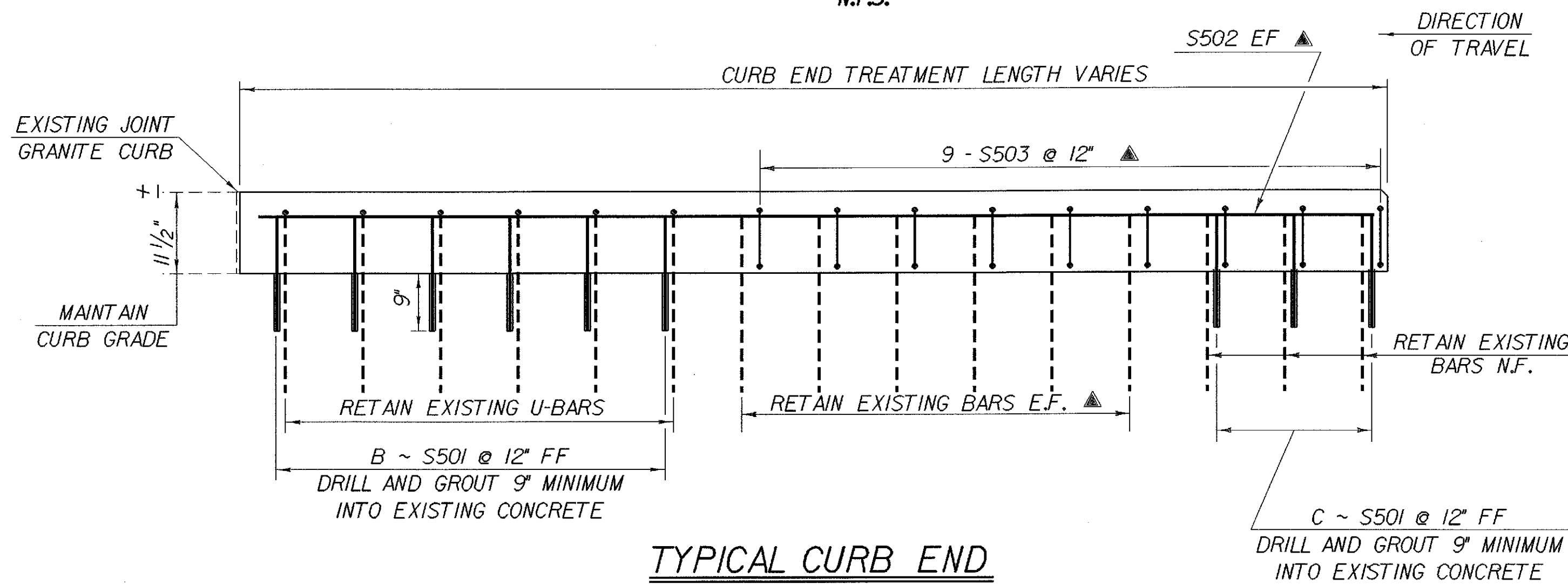
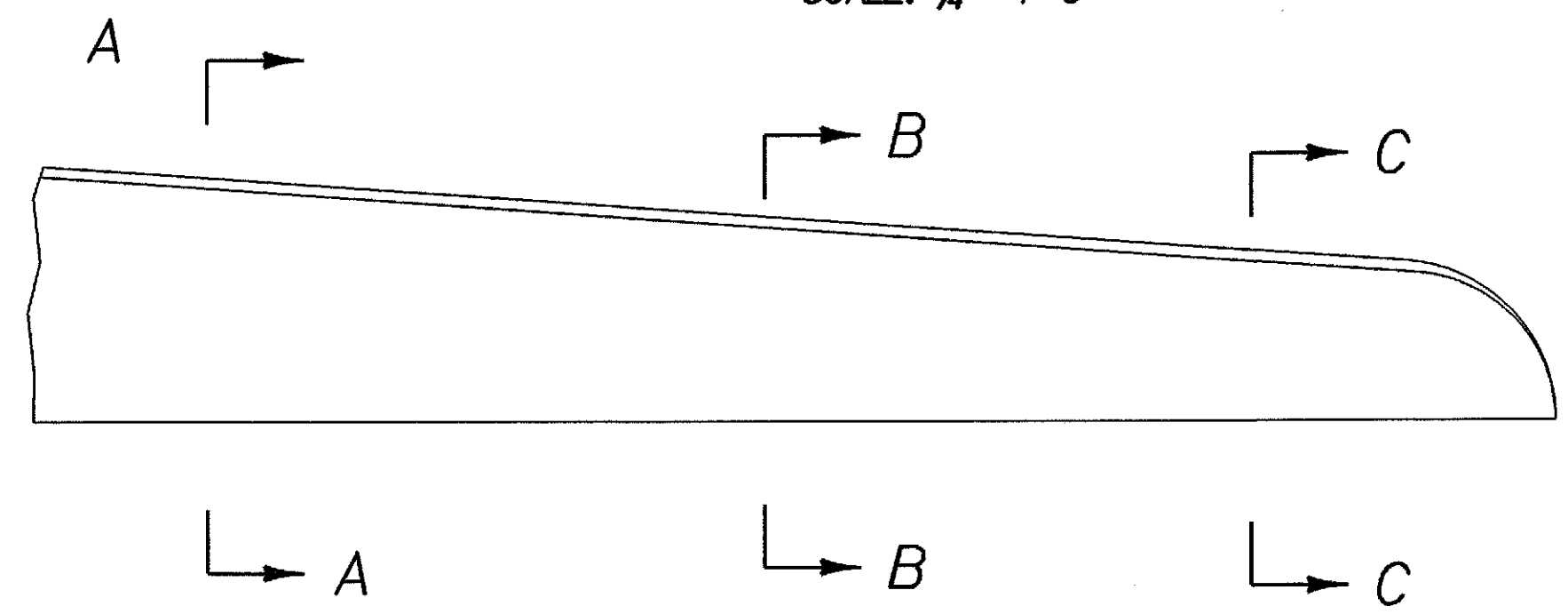


CURB END TREATMENT PLAN FOR 2'-8" WIDE CURB (BR 10)
N.T.S.



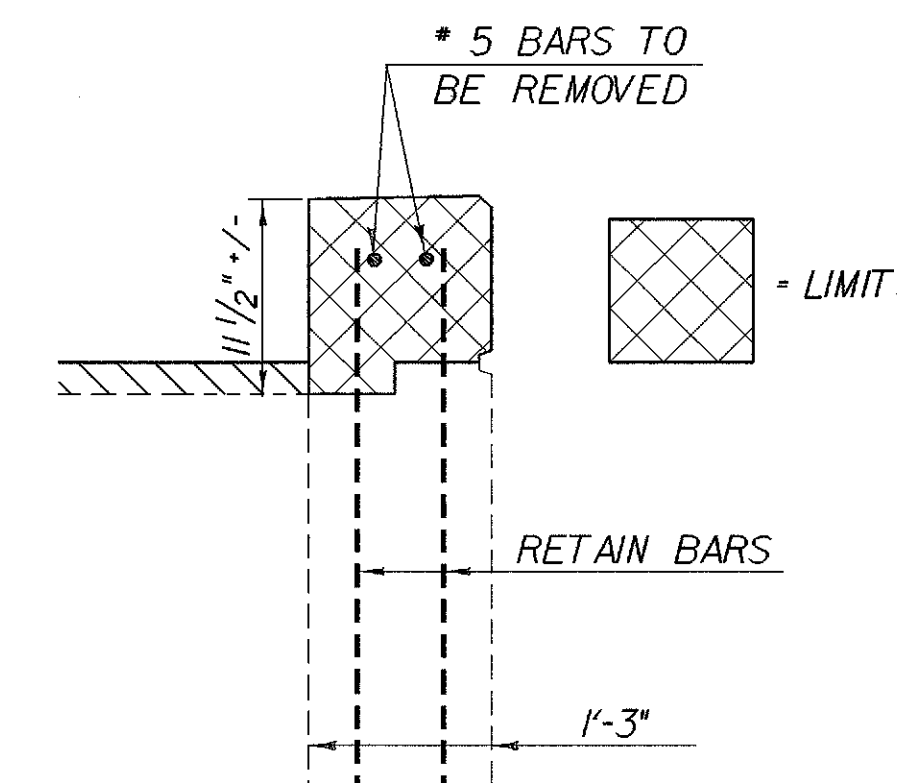
TYPICAL CURB END TREATMENT ELEVATION
SCALE: 3/4" = 1'-0"



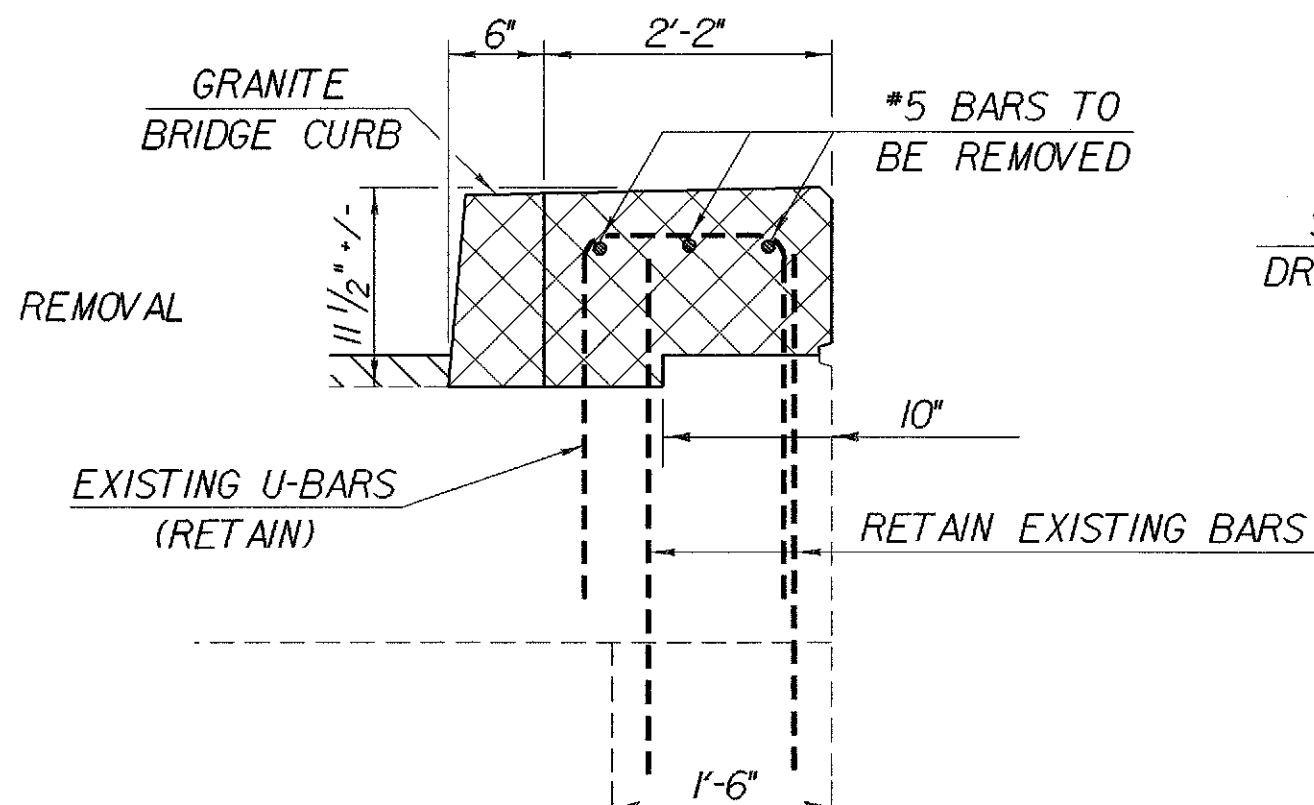
TYPICAL CURB END TREATMENT PLAN

NOTE:
NF = NEAR FACE
FF = FAR FACE
EF = EACH FACE
▲ = CUT TO FIT IN FIELD
3" CLEAR UNLESS OTHERWISE SPECIFIED

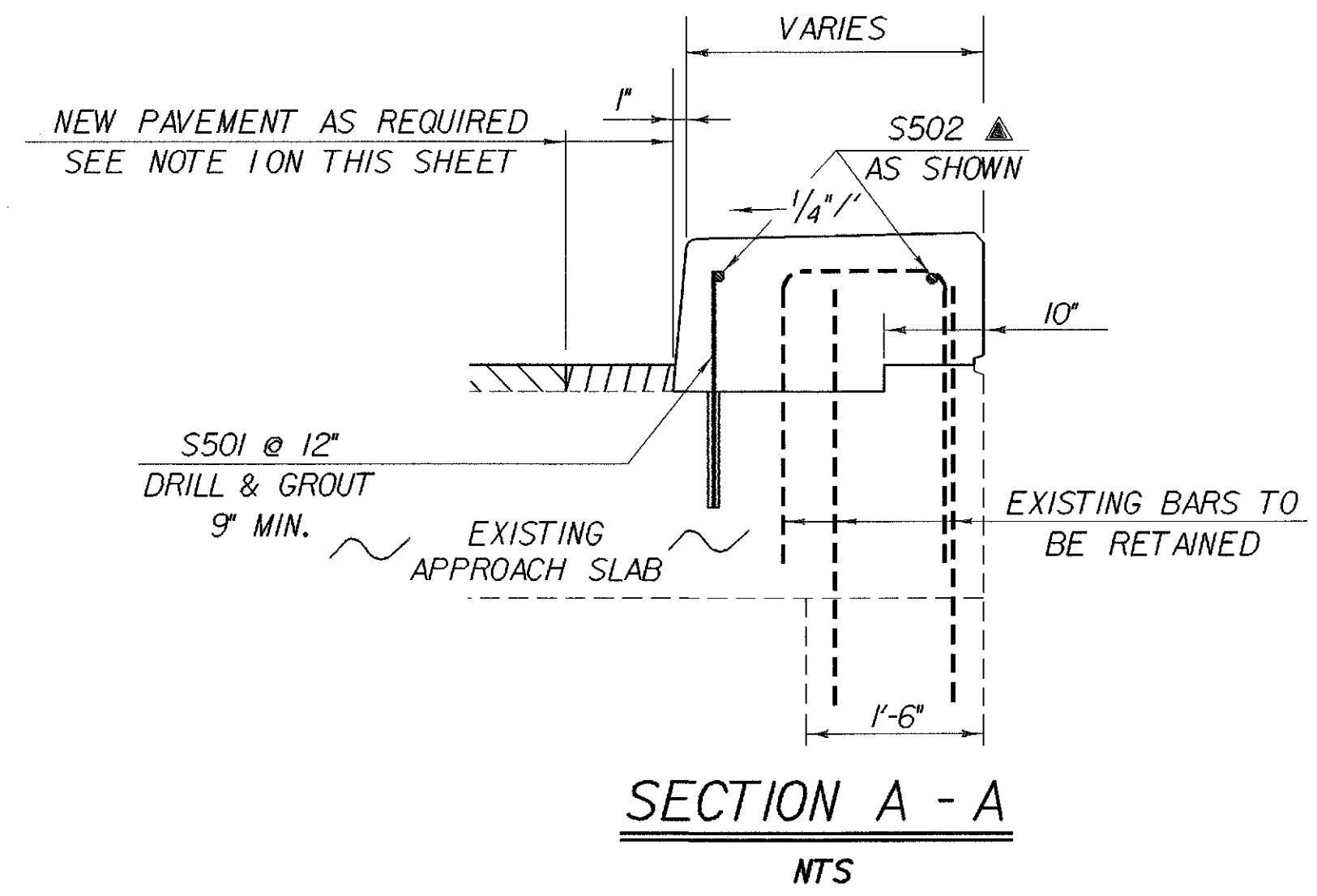
| BRIDGE | CURB | A | B | C |
|------------|------|-------------|----|---|
| 10 (TH 36) | N.W. | 17'-9 5/8" | 10 | 4 |
| 10 (TH 36) | N.E. | 17'-6" | 10 | 4 |
| 10 (TH 36) | S.W. | 13'-10 3/4" | 6 | 3 |
| 10 (TH 36) | S.E. | 14'-7 1/4" | 7 | 3 |



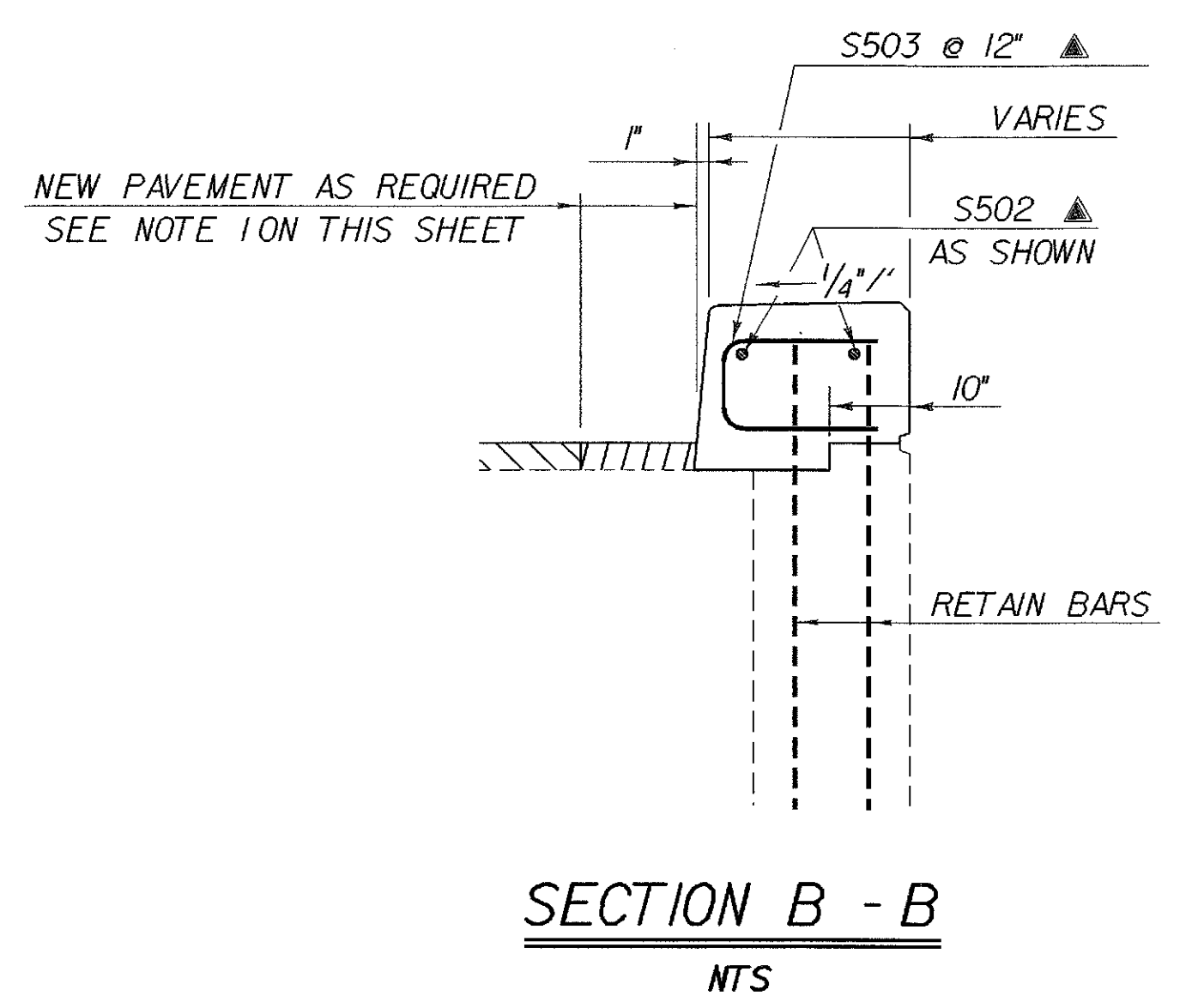
ELEVATION VIEW OF EXISTING CURB END (1'-3")
N.T.S.



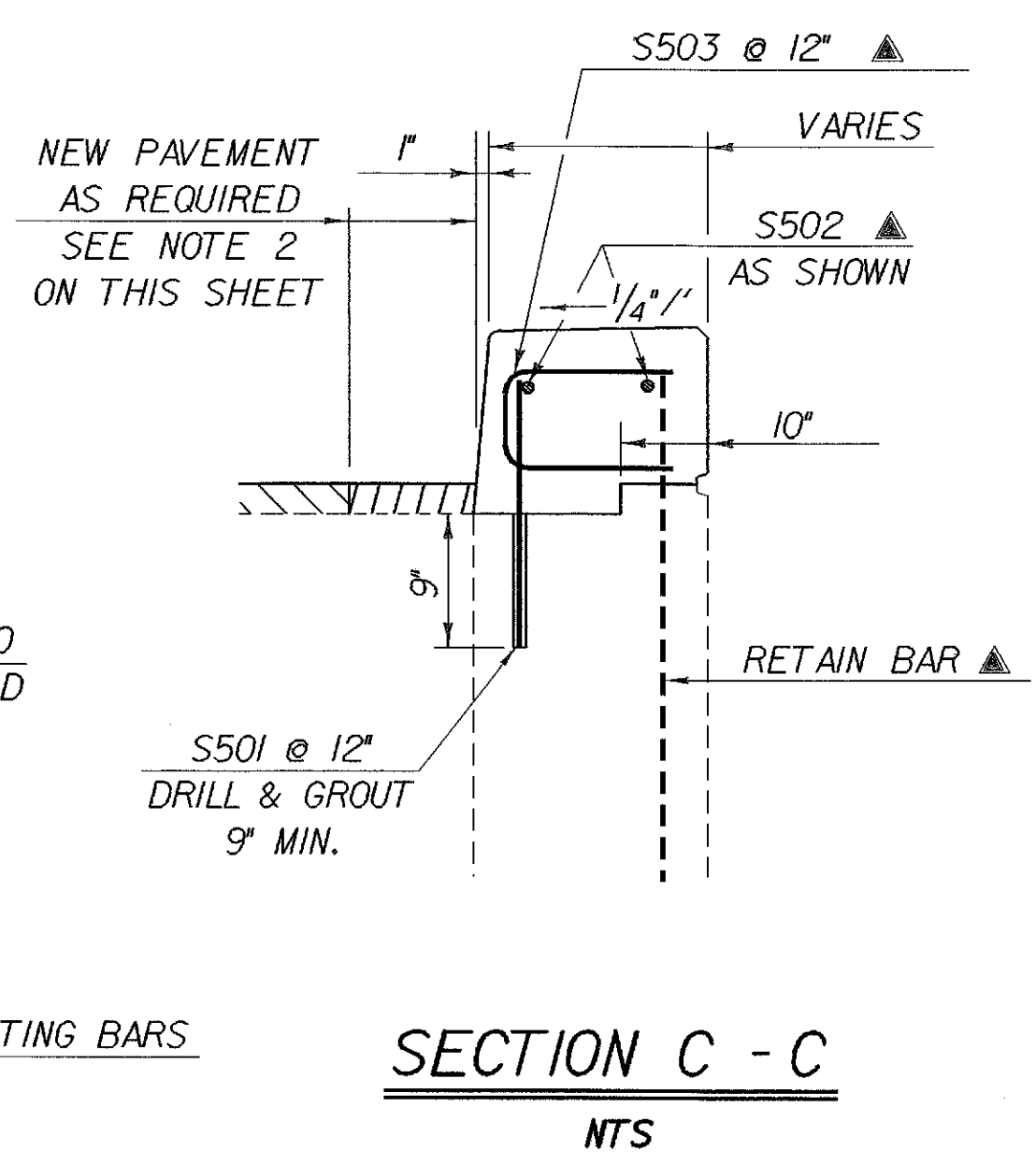
ELEVATION VIEW OF EXISTING CURB END (2'-8")
N.T.S.



SECTION A - A
N.T.S.



SECTION B - B
N.T.S.



SECTION C - C
N.T.S.

NOTES:

- AREAS OF THE EXISTING WINGWALL OR APPROACH SLABS THAT BECAME EXPOSED AS A RESULT OF THE CONSTRUCTION OF THE NEW CURB END TREATMENTS WILL BE COATED WITH A LIQUID MEMBRANE PER SECTION 519 AND THEN PAVED.
- ALL EXPOSED REINFORCING STEEL SHALL BE SAND BLASTED CLEAN. THE EXISTING CONCRETE AND ALL REINFORCING STEEL SHALL BE THOROUGHLY WETTED AND THE CONCRETE COATED WITH NEAT CEMENT GROUT APPLIED AS PER SUBSECTION 501J.3(b) OF THE STANDARD SPECIFICATIONS. PAYMENT FOR THE WORK WILL BE SUBSIDIARY TO ITEM 501.60, "SILICA FUME CONCRETE".

STATE OF VERMONT AGENCY OF TRANSPORTATION

Town Of **HARTFORD-SHARON-ROYALTON** Bridge No. **10**
 Highway No. **189** Log Sta. _____
 Surv. Sta. _____

CURB END DETAILS FOR BRIDGE 10 (MM 6.5) T.H. 36 OVER I-89

Designed By **C. MEUNIER** Drawn By **S. MAGNAN/P.T. LONSDALE**
 Checked By _____ Date _____ Bridge Design Supervisor
 C.W. MEUNIER 10/96 G.S. ROGERS Date 10/96

PROJECT **HARTFORD-SHARON-ROYALTON** PROJECT NO. **IM IR 089-1(8)**
 I.G.C. \work\cadd\11\incabinet\87\008\Structures\sa008d1.dgn sa008ce4j

Bridge Sheet No. **BR 131** Sheet **88** of **260**