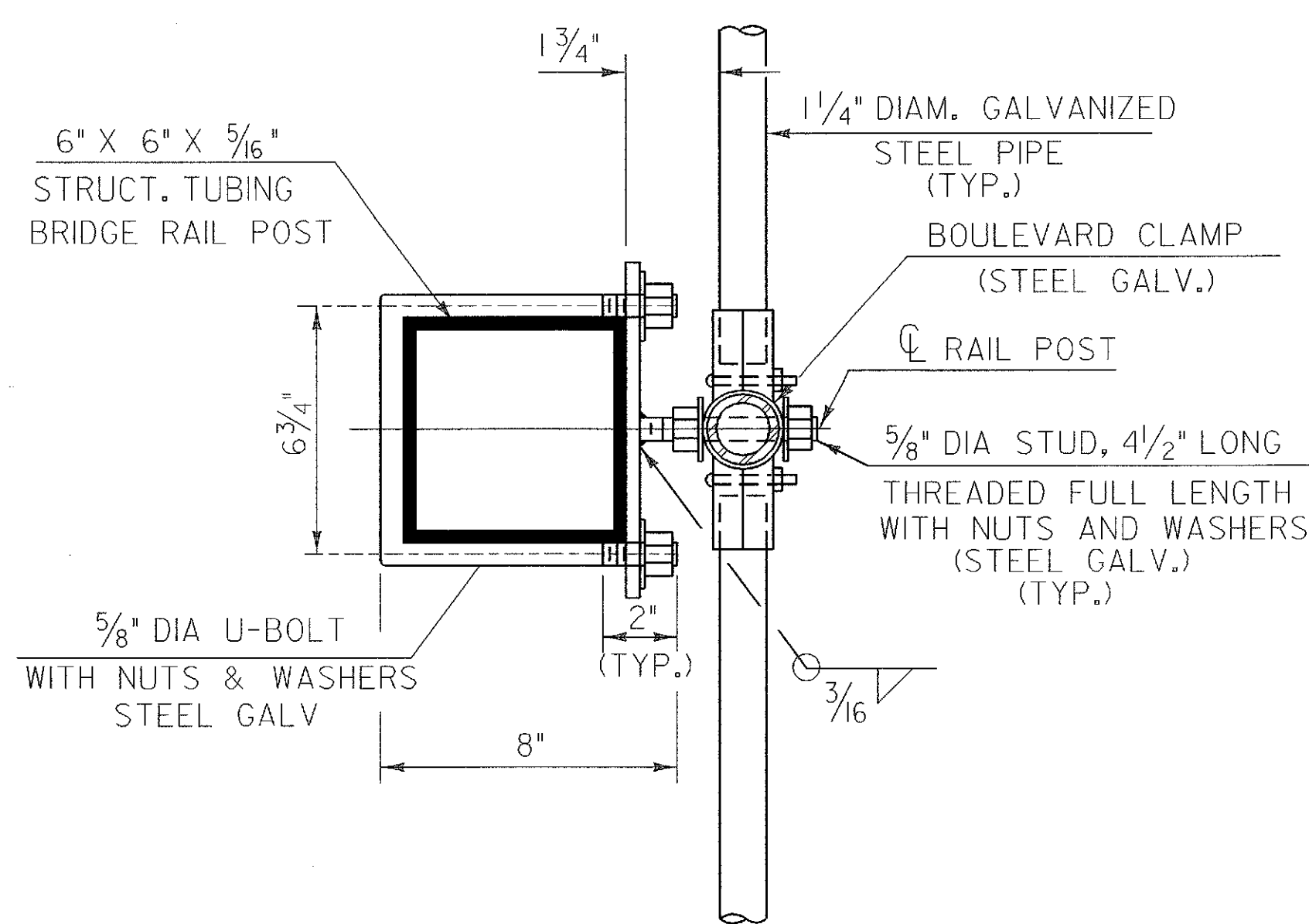
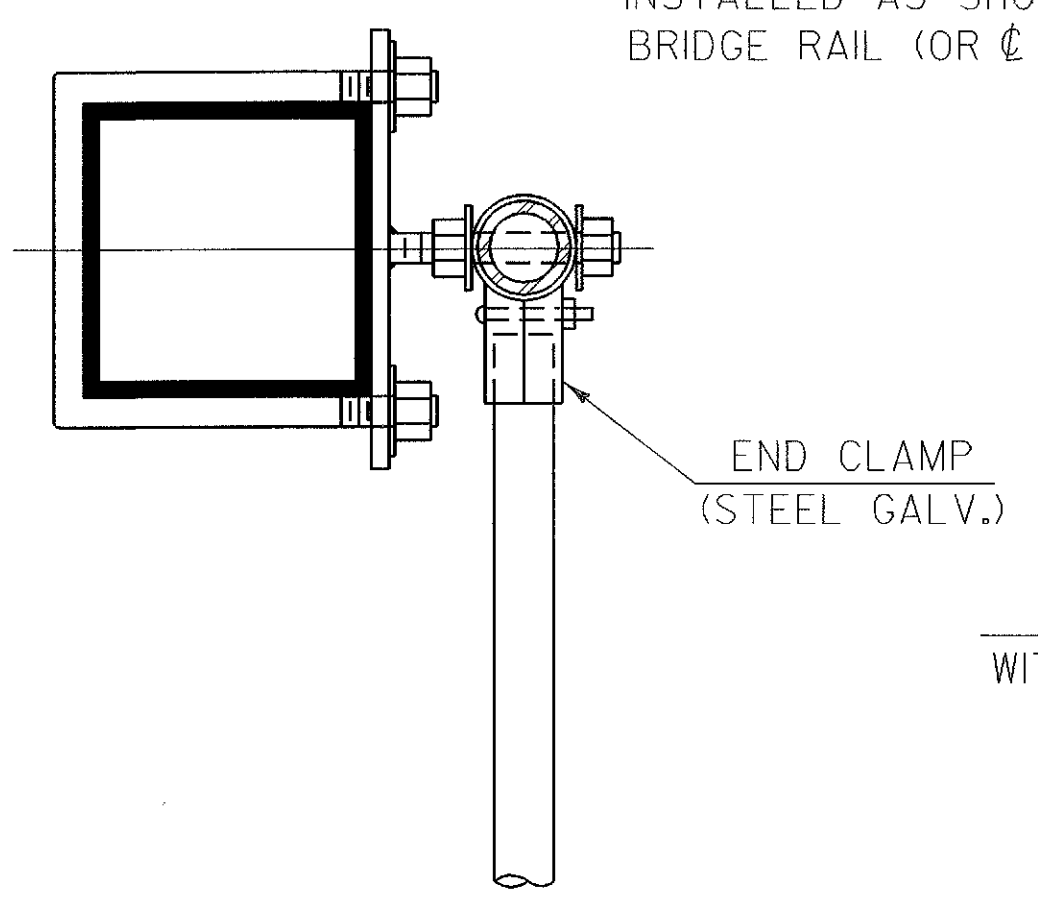


SNOW FENCE DETAILS (FOR USE IN CONJUNCTION WITH GALVANIZED BOX BEAM)



SECTION A-A



PLAN VIEW AT END POST

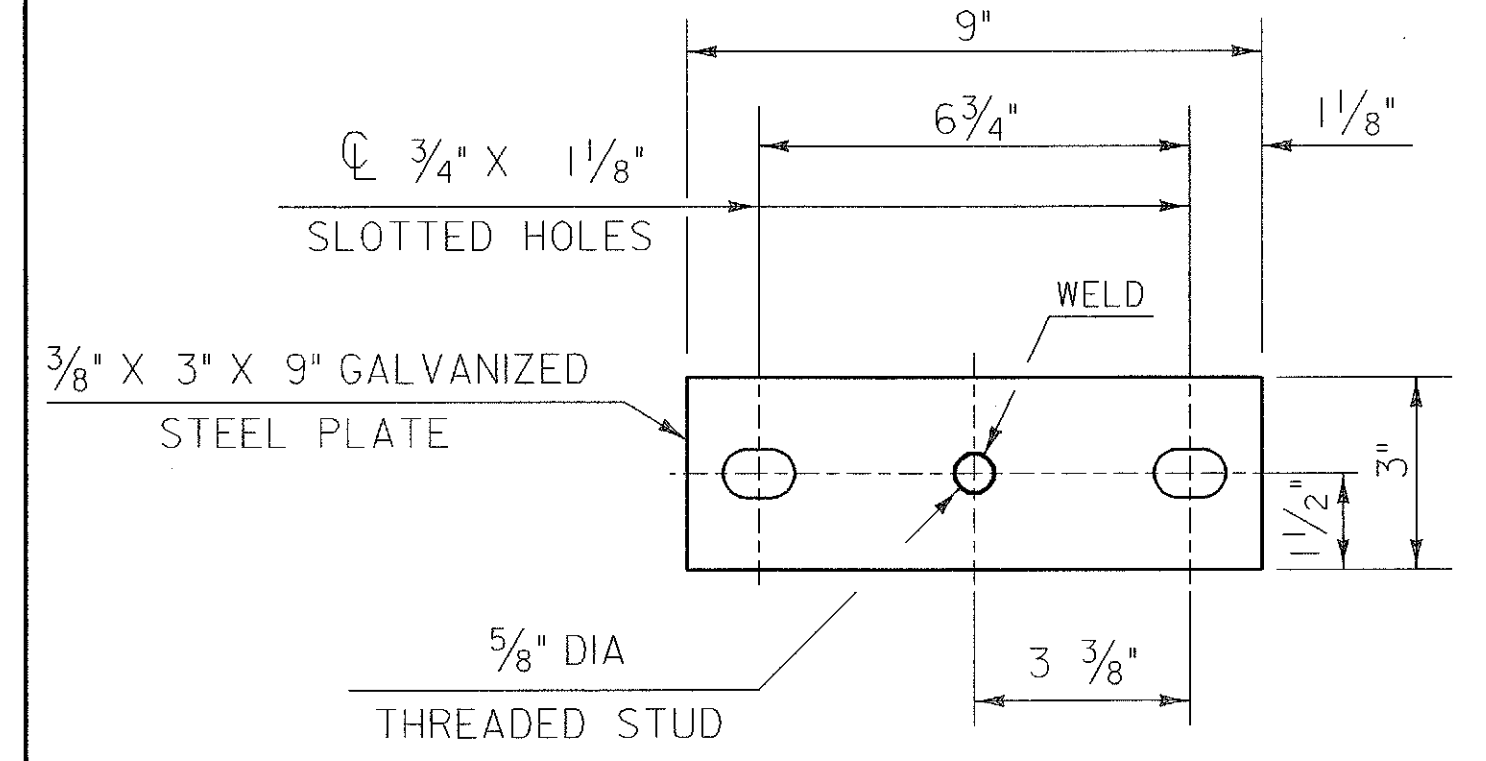
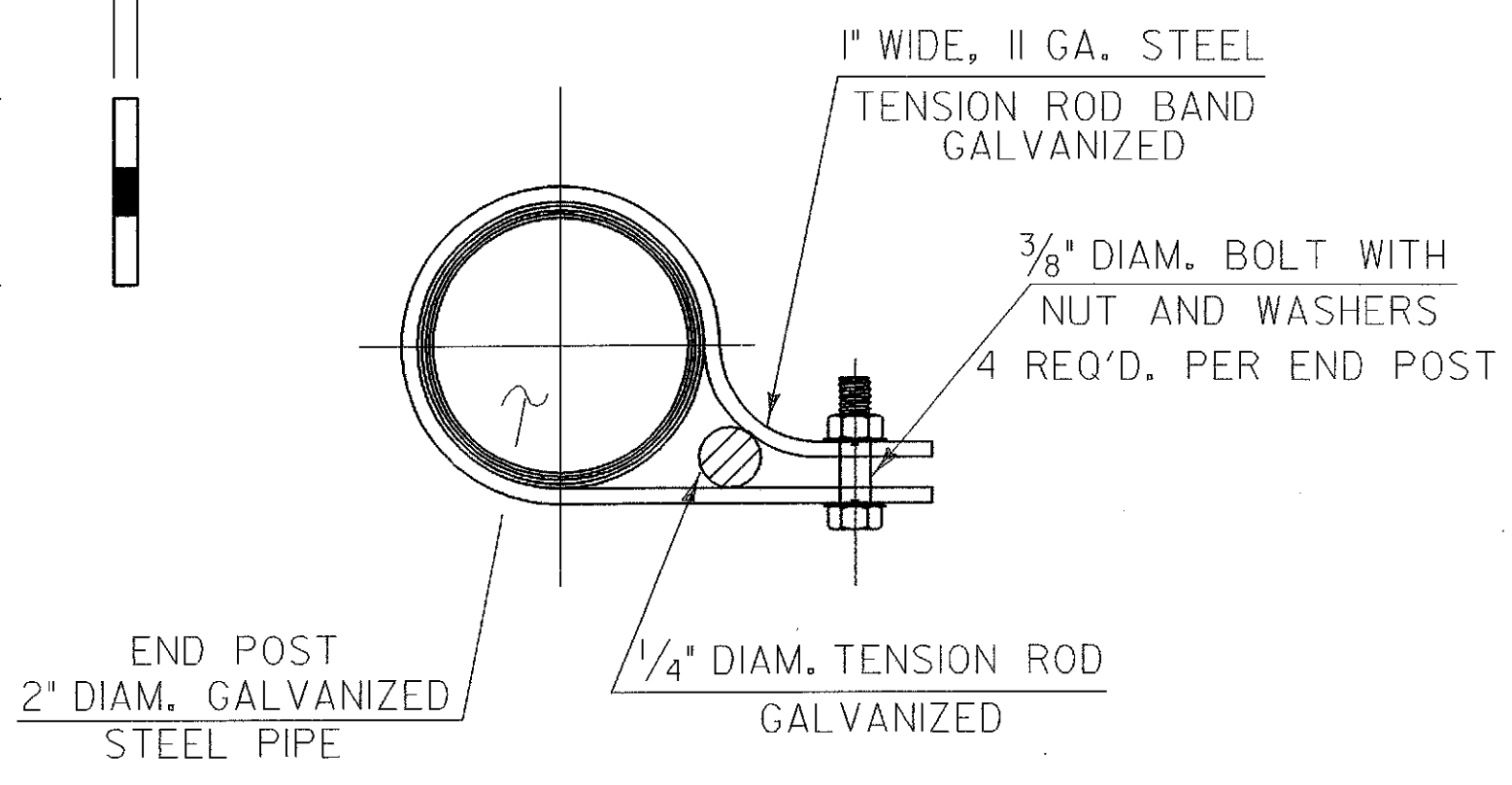
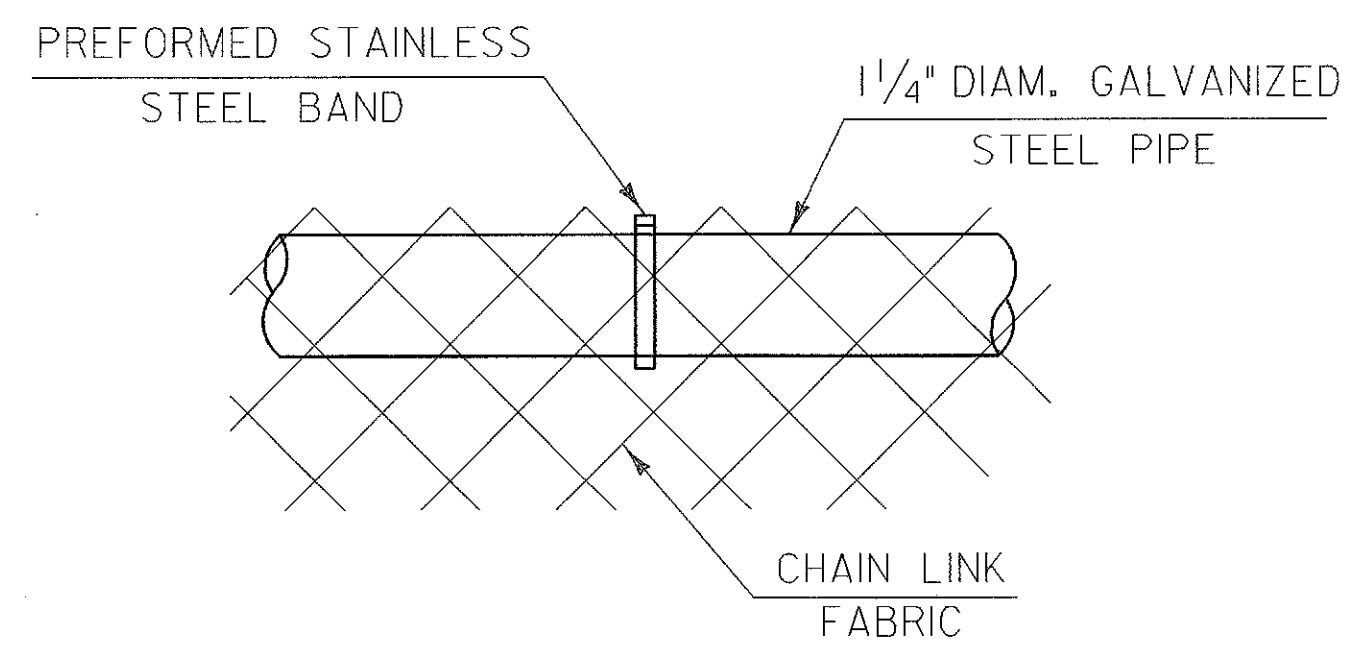


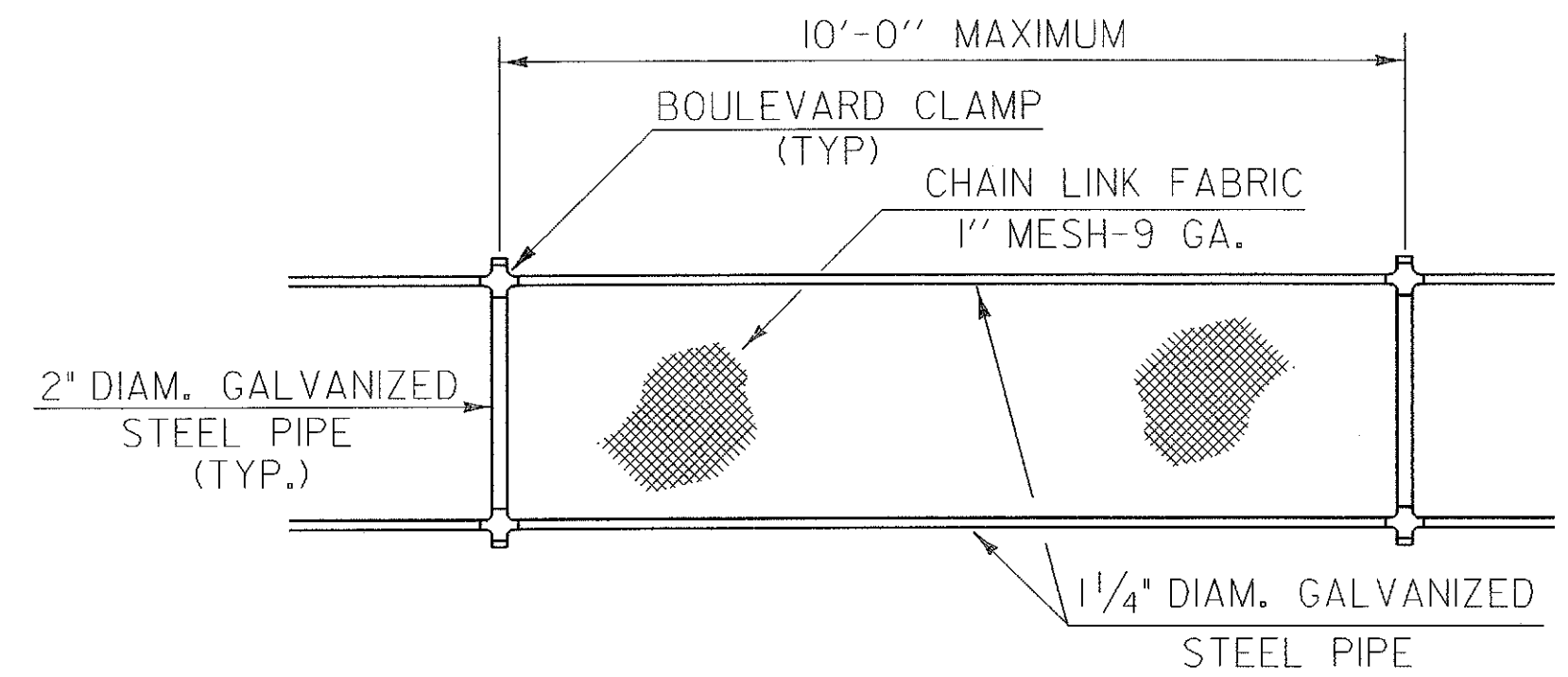
PLATE DETAILS



TENSION ROD BAND

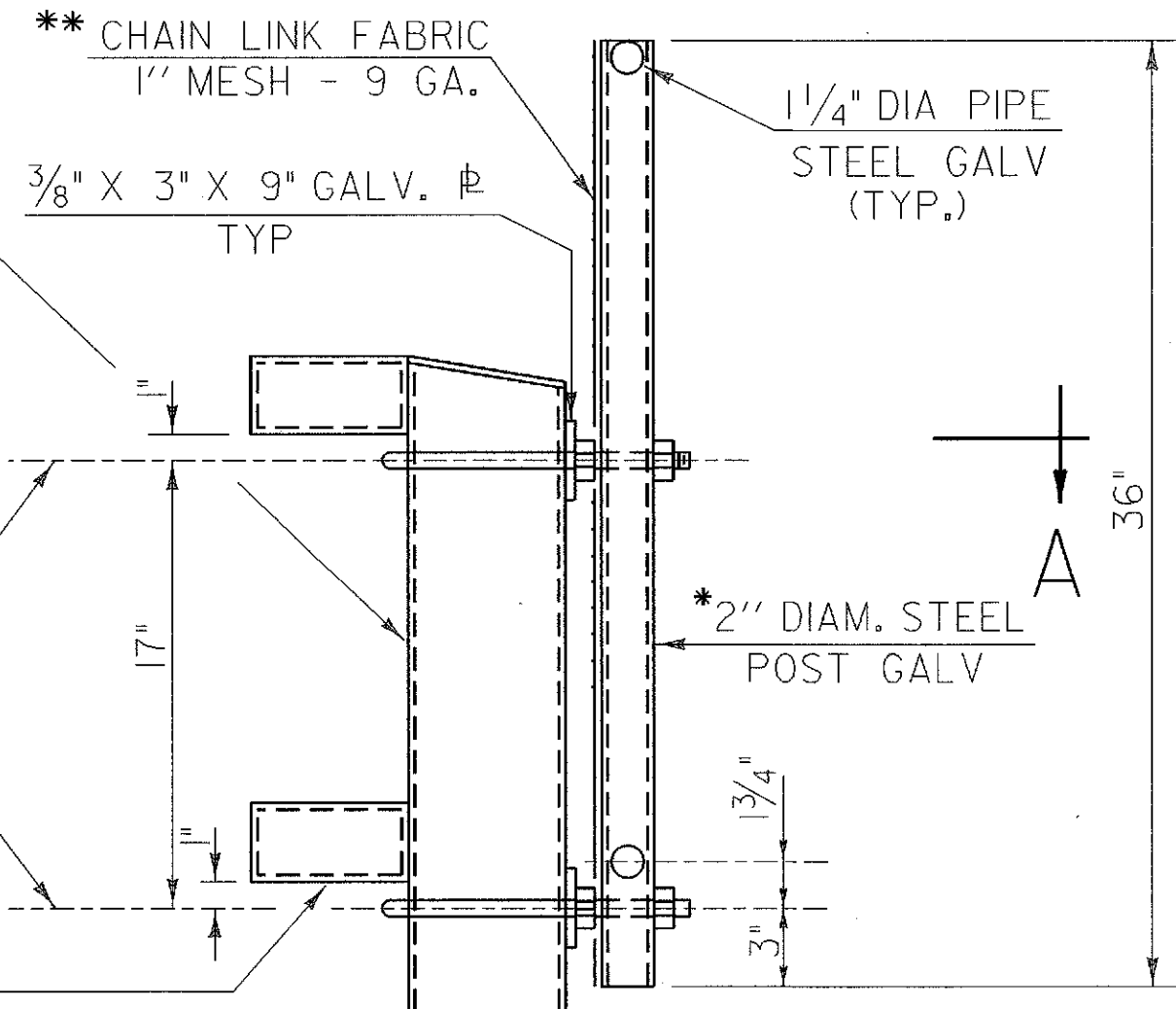


DETAIL A



ELEVATION SNOW BARRIER

** THE CHAIN LINK FABRIC MESH IS TO BE INSTALLED AS SHOWN, WHICH IS ON THE BRIDGE RAIL (OR ϕ) SIDE OF THE ASSEMBLY. (TYP.)

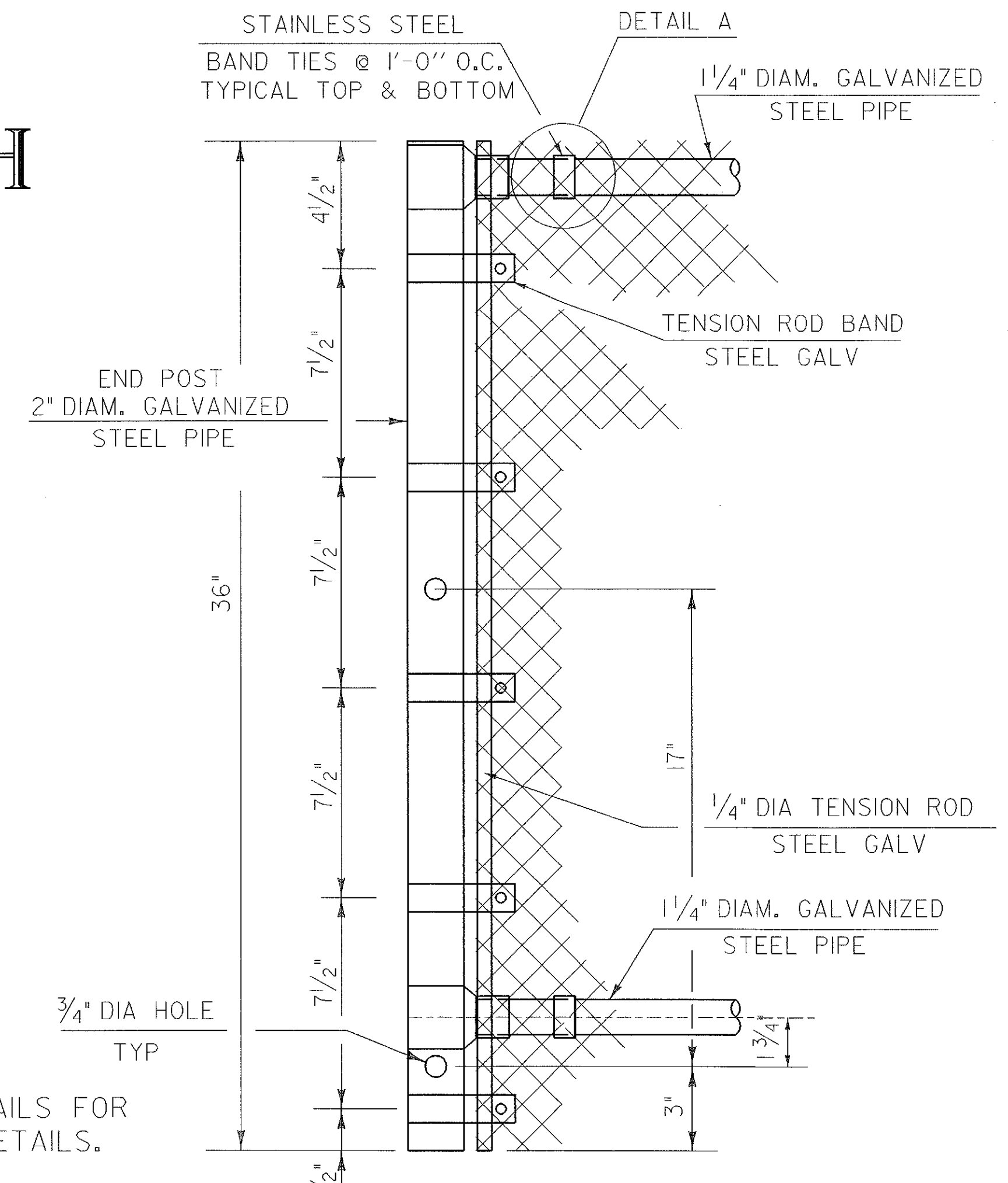


TYPICAL SECTION

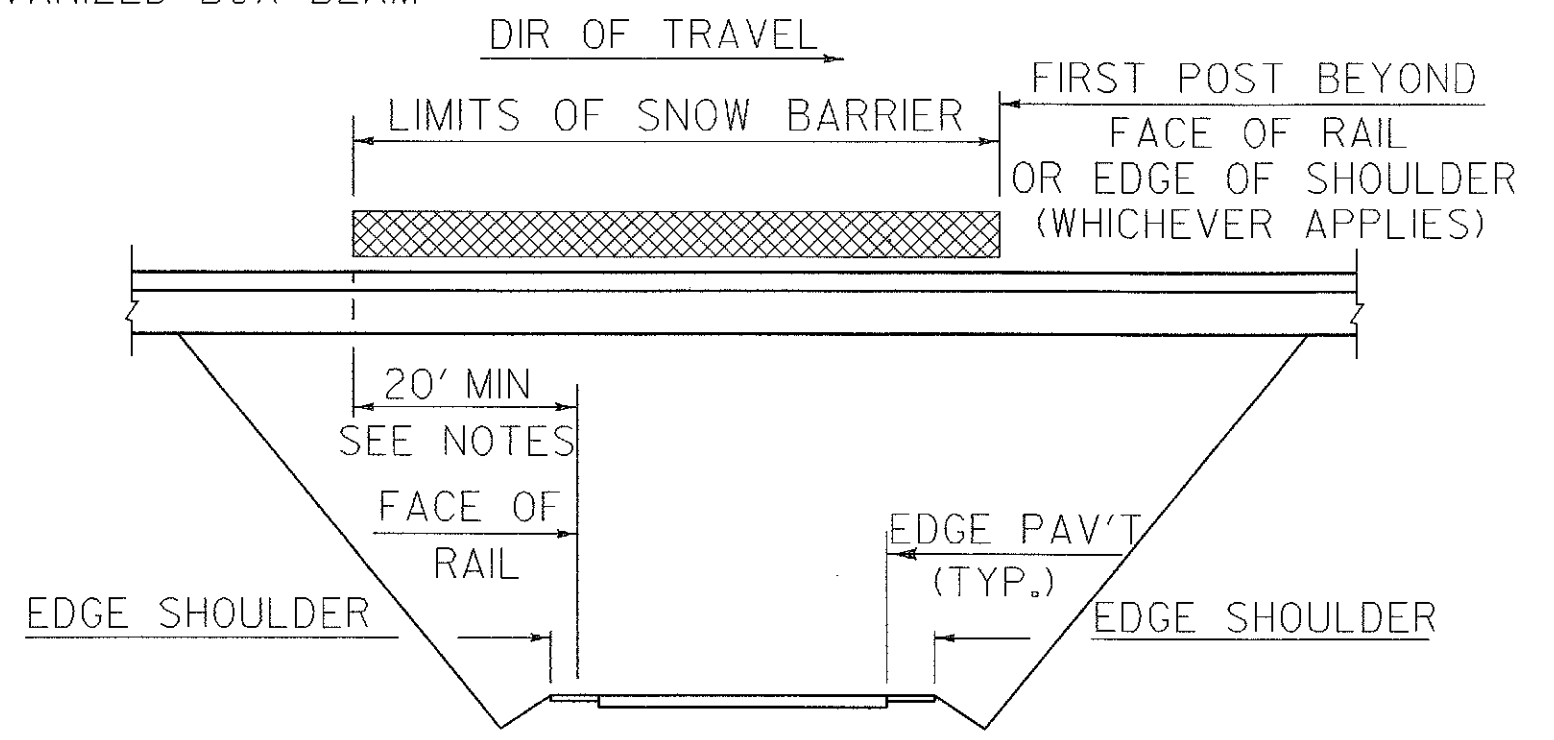
* SEE END POST DETAILS FOR ADDITIONAL POST DETAILS.
SEE STD. SHEETS SB-R4A-82 AND SB-R4B-82 FOR ADDITIONAL DETAILS RELATIVE TO BRIDGE RAILING - TWO RAIL GALVANIZED BOX BEAM

GENERAL NOTES

1. THREADS OF STUDS AND U-BOLTS TO BE 5/8-11 UNC.
2. ALL CONNECTION PLATES TO BE GALVANIZED AFTER FABRICATION.
3. 1 1/4" PIPE LENGTH SHALL BE FIELD CUT TO FIT POST SPACING.
4. CHAIN LINK FABRIC TO BE KNUCKLED TOP AND BOTTOM.
5. ALL BOLTS, NUTS AND WASHERS SHALL CONFORM TO THE SPECIFICATIONS FOR ASTM A307, ASTM A536 AND ASTM F436, RESPECTIVELY.
6. ALL STEEL PLATES SHALL CONFORM TO THE SPECIFICATION FOR AASHTO M270 GRADE 36.
7. ALL GALVANIZING SHALL CONFORM TO THE REQUIREMENTS OF AASHTO M-181 WITH HARDWARE AND FITTINGS CONFORMING TO THE REQUIREMENTS OF AASHTO M-III OR AASHTO M-232 WHICHEVER IS APPLICABLE. ALL BOLTS, NUTS AND WASHERS SHALL BE EITHER HOT-DIP GALVANIZED IN ACCORDANCE WITH THE ABOVE AASHTO REQUIREMENTS OR MECHANICALLY GALVANIZED USING A MECHANICALLY DEPOSITED PROCESS CONFORMING TO THE REQUIREMENTS OF AASHTO M-298, CLASS II.
8. GALVANIZED CHAIN-LINK FABRIC SHALL BE TYPE I (ZINC) CLASS D AS SPECIFIED IN AASHTO M-181.
9. SNOW BARRIER SHALL BEGIN AT THE BRIDGE RAIL POST WHICH WILL PROVIDE A MIN. DISTANCE OF 20' (AS SHOWN) OR AS DIRECTED BY THE ENGINEER.
10. ALL REFERENCES TO THE DIAMETERS OF GALVANIZED STEEL PIPE SHALL REFER TO THE OUTSIDE DIAMETER (O. D.).



END POST DETAILS



SCHEMATIC SNOW BARRIER LIMITS

DETAILS ON THIS SHEET NOT TO SCALE
ALL DIMENSIONS IN INCHES UNLESS OTHERWISE NOTED

STATE OF VERMONT AGENCY OF TRANSPORTATION			
Town Of HARTFORD-SHARON-ROYALTON	Bridge No.		
Highway No. I-89	Log Sta.		
		Surv. Sta.	
SNOW FENCE DETAILS FOR BOX BEAM RAIL (BR 3 (MM 0.5))			
Designed By C. MEUNIER	Drawn By VAOT		
Checked By C. MEUNIER	Date 11/98	Bridge Design Supervisor G. S. ROGERS	Date 11/98
PROJECT HARTFORD-SHARON-ROYALTON		PROJECT NO. IM IR 089-1(B)	
I:\C:\work\cadd\11\incobnet\87a008\Structures\sa008d11.dgn		sa008r06.j	
Bridge Sheet No. BR 130	Sheet 87		of 260