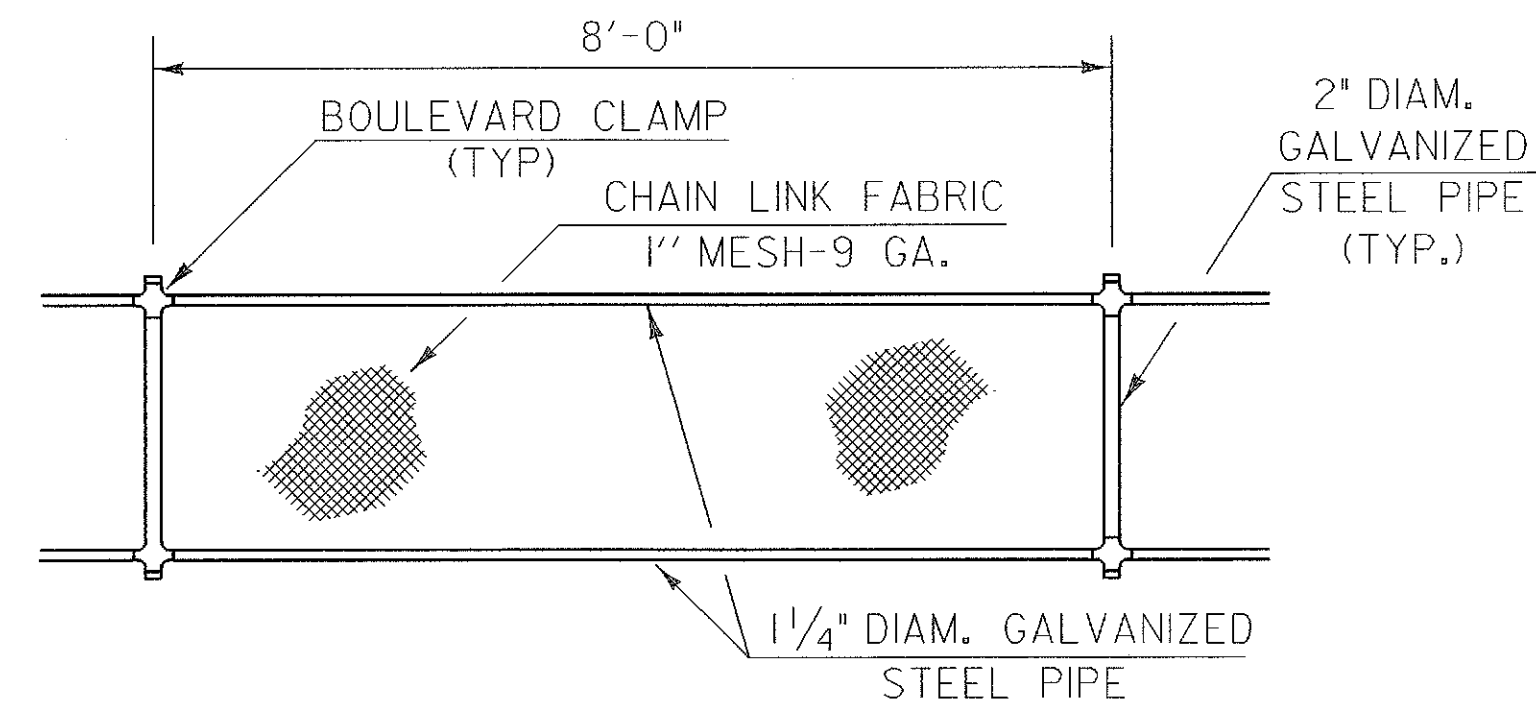


SNOW FENCE DETAILS (FOR USE IN CONJUNCTION WITH 3 RAIL ALUMINUM BRIDGE RAILING)

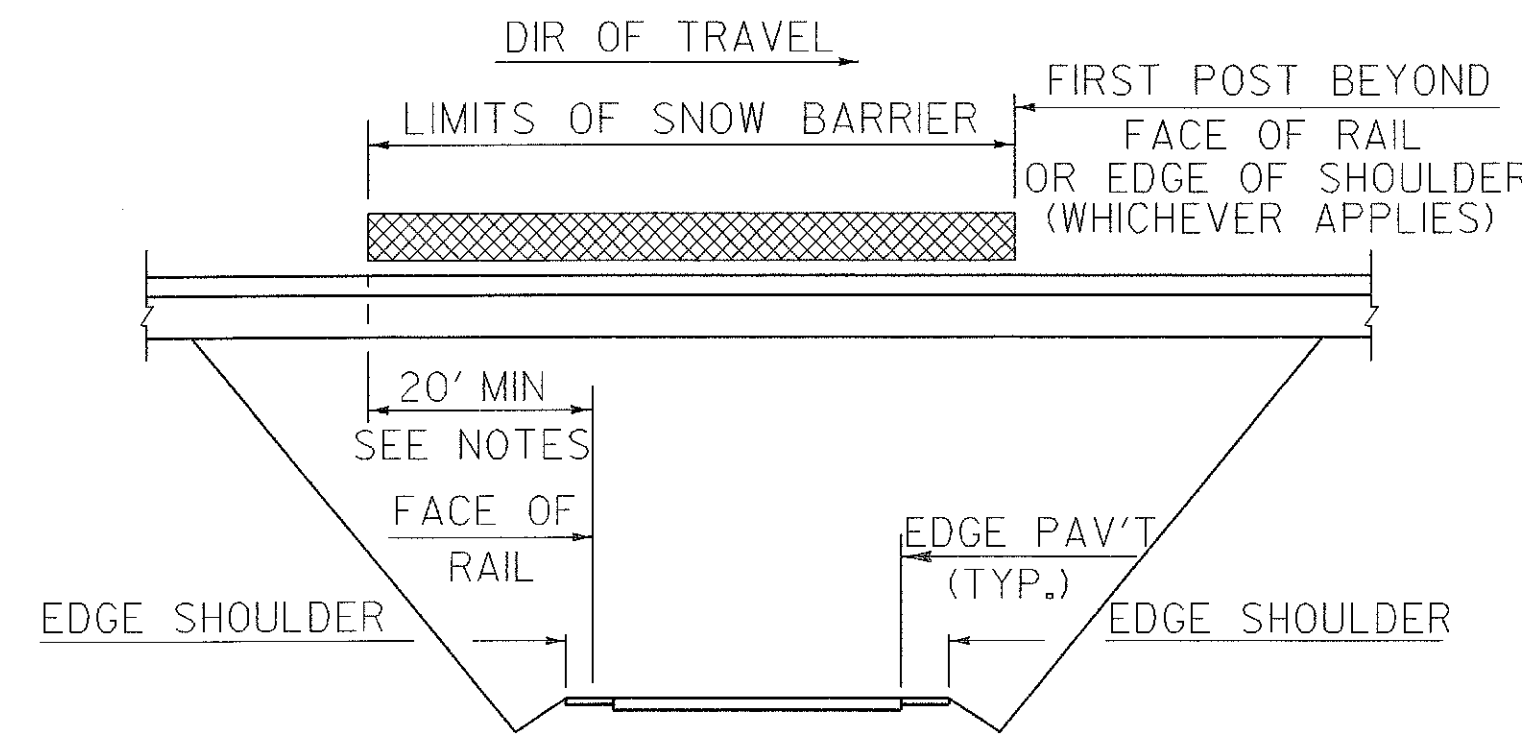
GENERAL NOTES

1. THREADS OF STUDS AND U-BOLTS TO BE 5/8-II UNC.
2. ALL CONNECTION PLATES TO BE GALVANIZED AFTER FABRICATION.
3. 1/4" PIPE LENGTH SHALL BE FIELD CUT TO FIT POST SPACING.
4. CHAIN LINK FABRIC TO BE KNUCKLED TOP AND BOTTOM.
5. ALL BOLTS, NUTS AND WASHERS SHALL CONFORM TO THE SPECIFICATIONS FOR ASTM A307, ASTM A563 AND ASTM F436, RESPECTIVELY.
6. ALL STEEL PLATES SHALL CONFORM TO THE SPECIFICATION FOR AASHTO M270 GRADE 36.
7. ALL GALVANIZING SHALL CONFORM TO THE REQUIREMENTS OF AASHTO M-181 WITH HARDWARE AND FITTINGS CONFORMING TO THE REQUIREMENTS OF AASHTO M-III OR AASHTO M-232 WHICHEVER IS APPLICABLE. ALL BOLTS, NUTS AND WASHERS SHALL BE EITHER HOT-DIP GALVANIZED IN ACCORDANCE WITH THE ABOVE AASHTO REQUIREMENTS OR MECHANICALLY GALVANIZED USING A MECHANICALLY DEPOSITED PROCESS CONFORMING TO THE REQUIREMENTS OF AASHTO M-298, CLASS II.
8. GALVANIZED CHAIN-LINK FABRIC SHALL BE TYPE I (ZINC) CLASS D AS SPECIFIED IN AASHTO M-181.
9. SNOW BARRIER SHALL BEGIN AT THE BRIDGE RAIL POST WHICH WILL PROVIDE A MINIMUM DISTANCE OF 20' (AS SHOWN) OR AS DIRECTED BY THE ENGINEER.
10. SEE SHEET BR 129 FOR DETAILS OF THE END POST, TENSION ROD BAND AND U-BOLT ASSEMBLIES.
11. ALL REFERENCES TO THE DIAMETERS OF GALVANIZED STEEL PIPE SHALL REFER TO THE OUTSIDE DIAMETER (O. D.).
12. ALL DIMENSIONS ON THIS SHEET ARE IN INCHES UNLESS OTHERWISE NOTED.



ELEVATION SNOW BARRIER

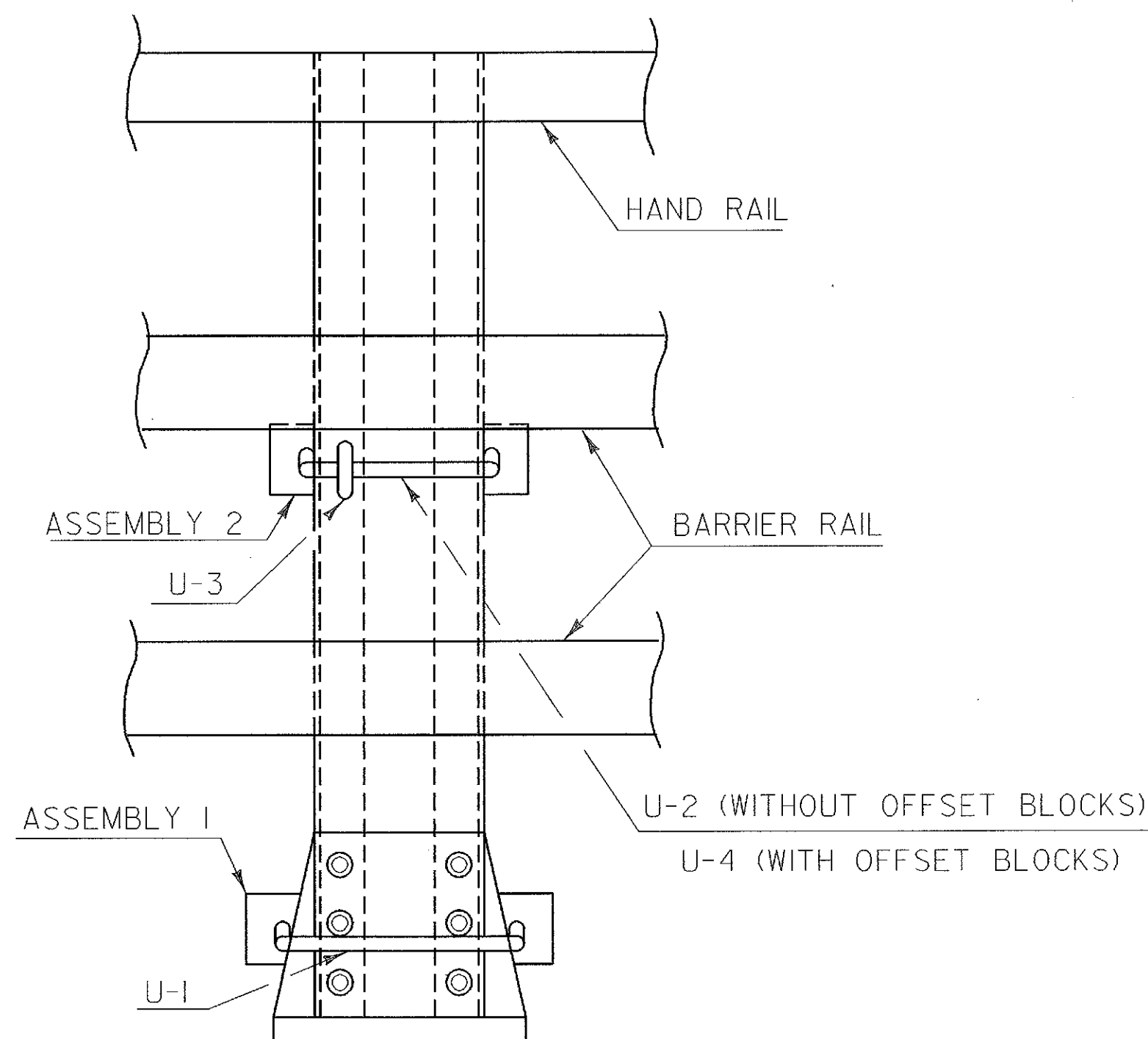
N.T.S.



SCHEMATIC SNOW BARRIER LIMITS

N.T.S.

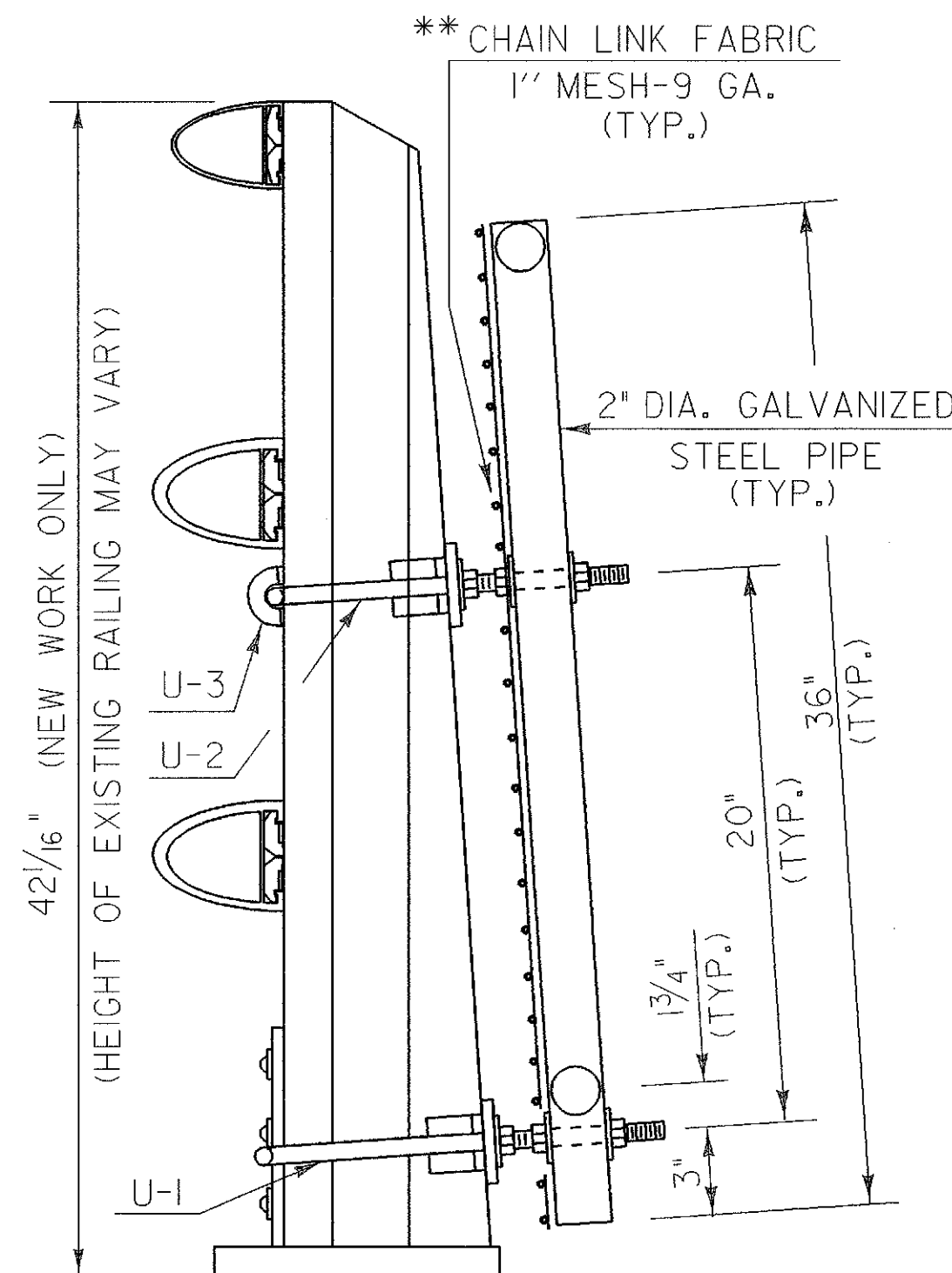
** THE CHAIN LINK FABRIC MESH IS TO BE INSTALLED AS SHOWN, WHICH IS ON THE BRIDGE RAIL (OR \emptyset) SIDE OF THE ASSEMBLY.
(TYP.)



ELEVATION VIEW

(SNOWFENCE NOT SHOWN FOR PURPOSES OF CLARITY)

N.T.S.



3-RAIL ALUMINUM WITHOUT OFFSET BLOCKS

N.T.S.

STATE OF VERMONT AGENCY OF TRANSPORTATION

Town of HARTFORD-SHARON-ROYALTON	Bridge No.
Highway No. 189	Log Sta.
	Surv. Sta.

SNOW FENCE DETAILS FOR 3 - RAIL ALUMINUM BRIDGE RAIL

Designed By C. MEUNIER	Drawn By D.W. NEWTON	Date 8-98
Checked By C. MEUNIER	Bridge Design Supervisor G.S. ROGERS	Date 8-98

PROJECT HARTFORD-SHARON-ROYALTON	PROJECT NO. IM IR 089-1(B)
--	--------------------------------------

I.G.C. <small>\\nrc\cadd\111ngcabnet\87a008\Structures\sa008d1.dgn</small>	sa008d41
Bridge Sheet No. BR 128	Sheet 85 of 260