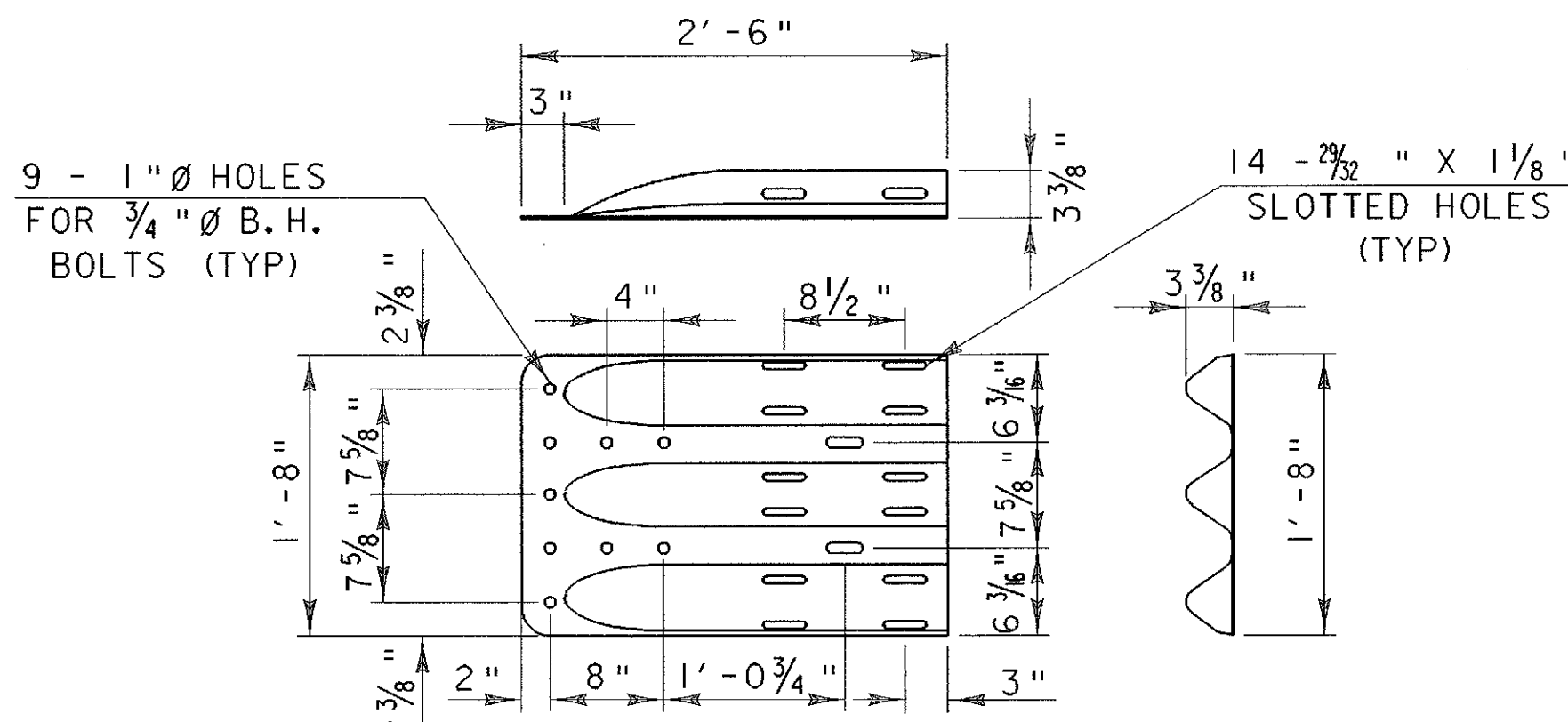


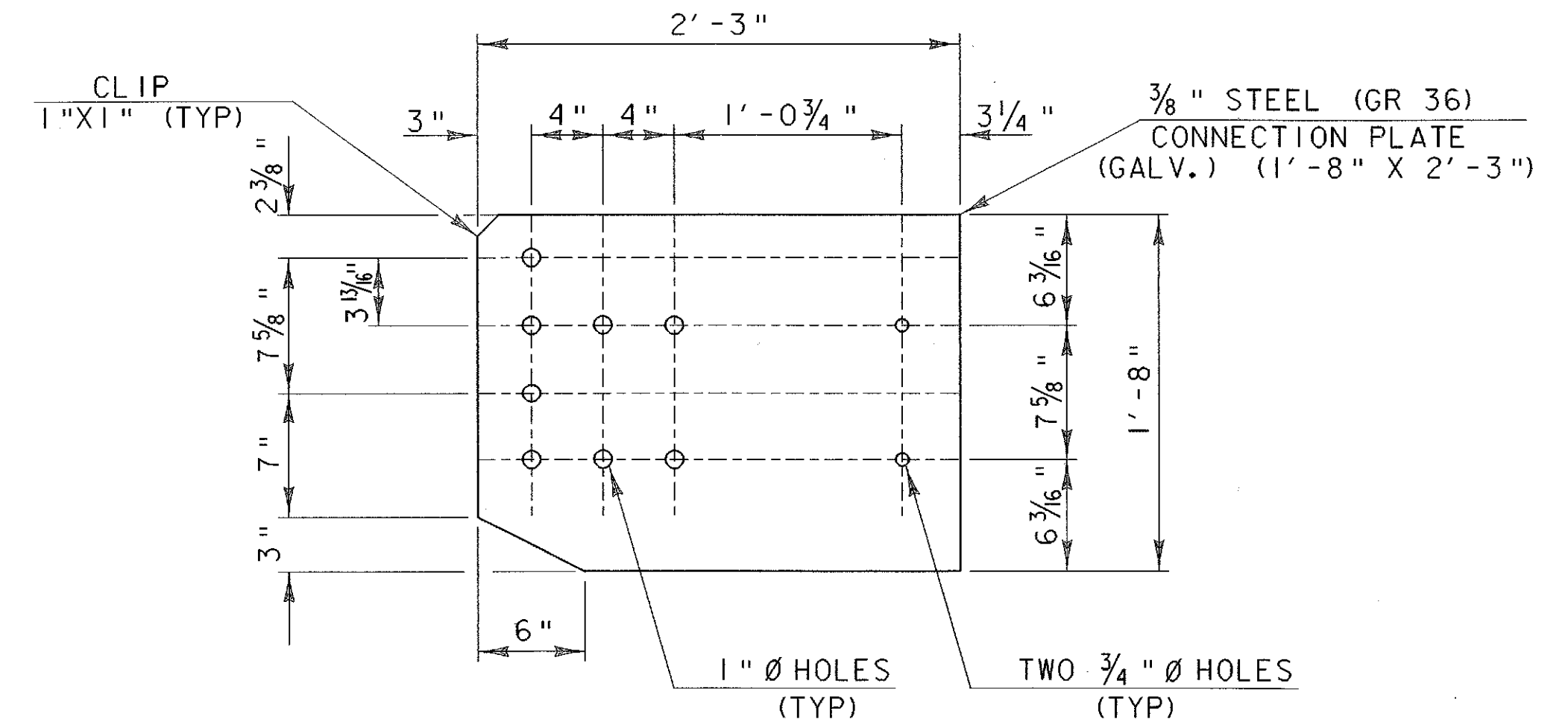
SECTION B-B (POST RAIL ASSEMBLY)

SCALE 1" = 1'-0"  
1 9 6 3 0



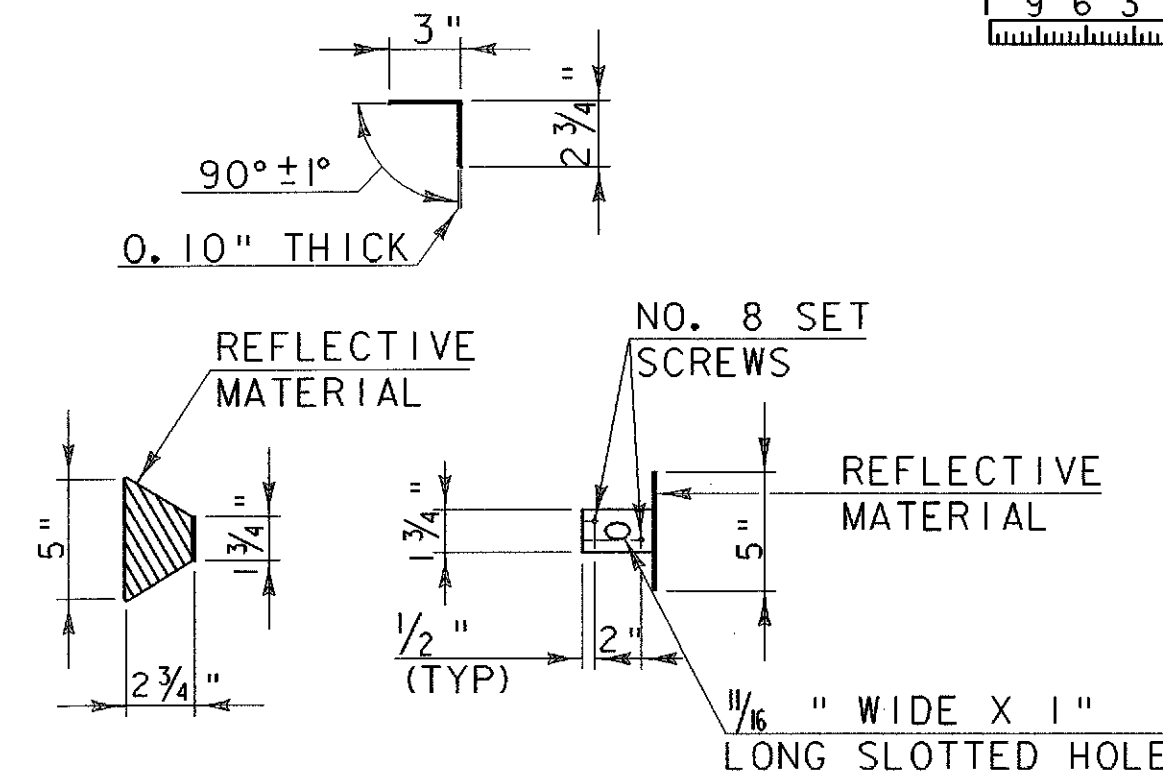
THREE-BEAM TERMINAL CONNECTOR

SCALE 1" = 1'-0"  
1 9 6 3 0



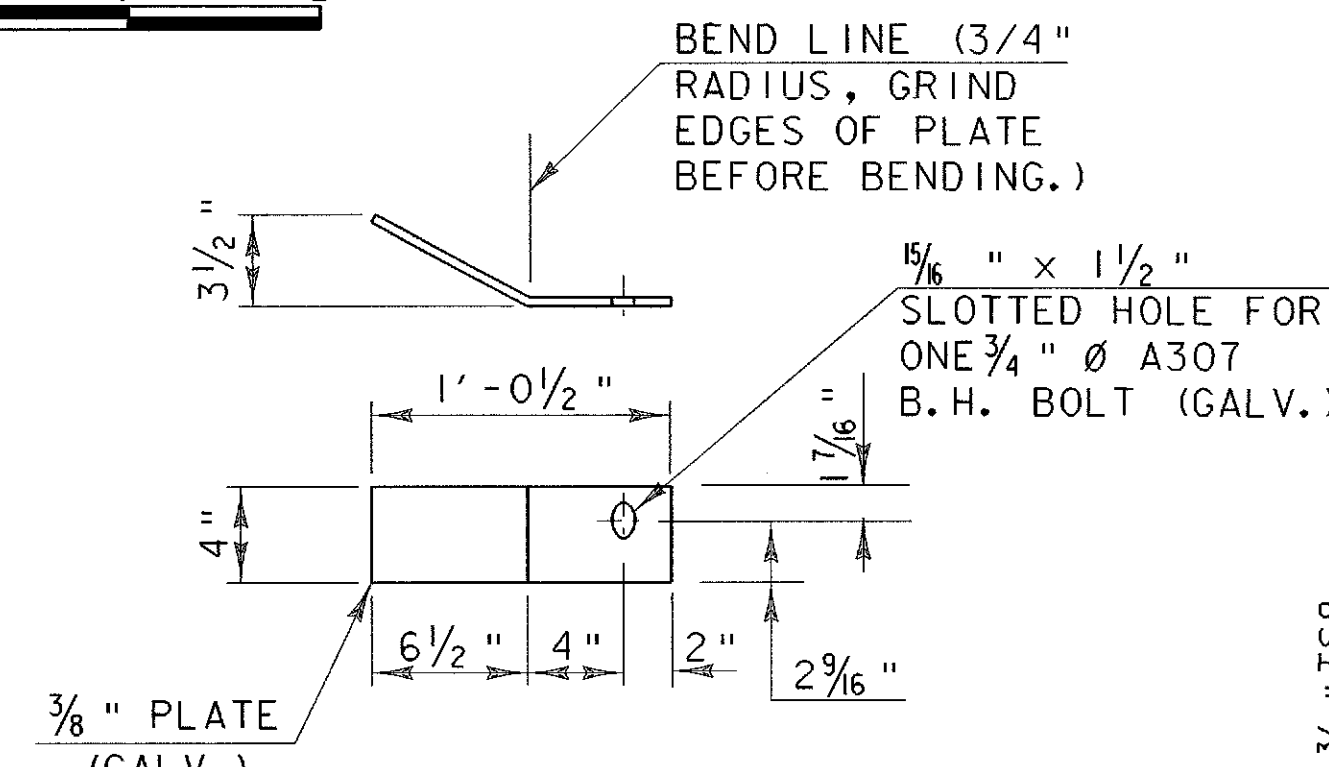
CONNECTION PLATE

SCALE 1 1/2" = 1'-0"  
1 9 6 3 0



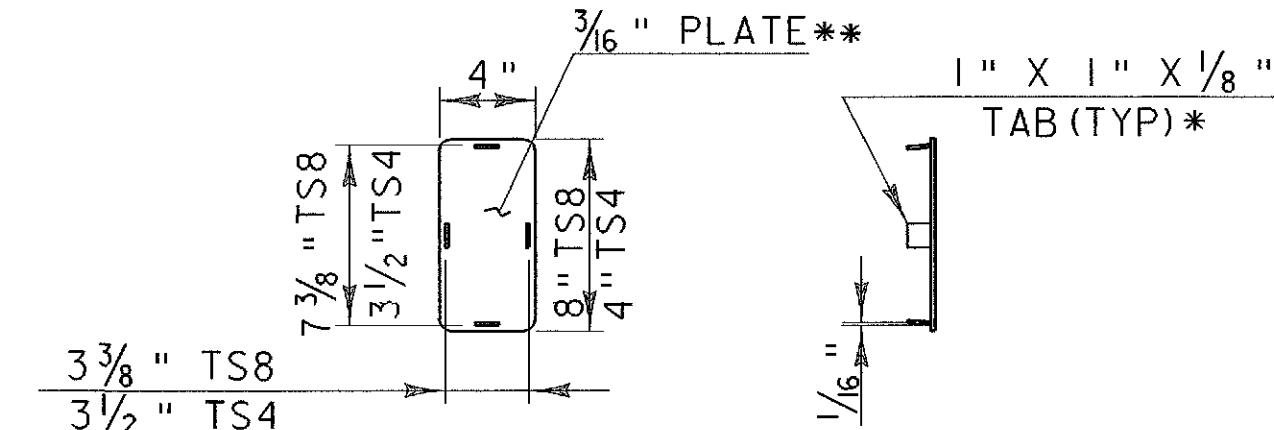
DELINEATION DEVICE DETAILS

SCALE 1 1/2" = 1'-0"  
1 9 6 3 0



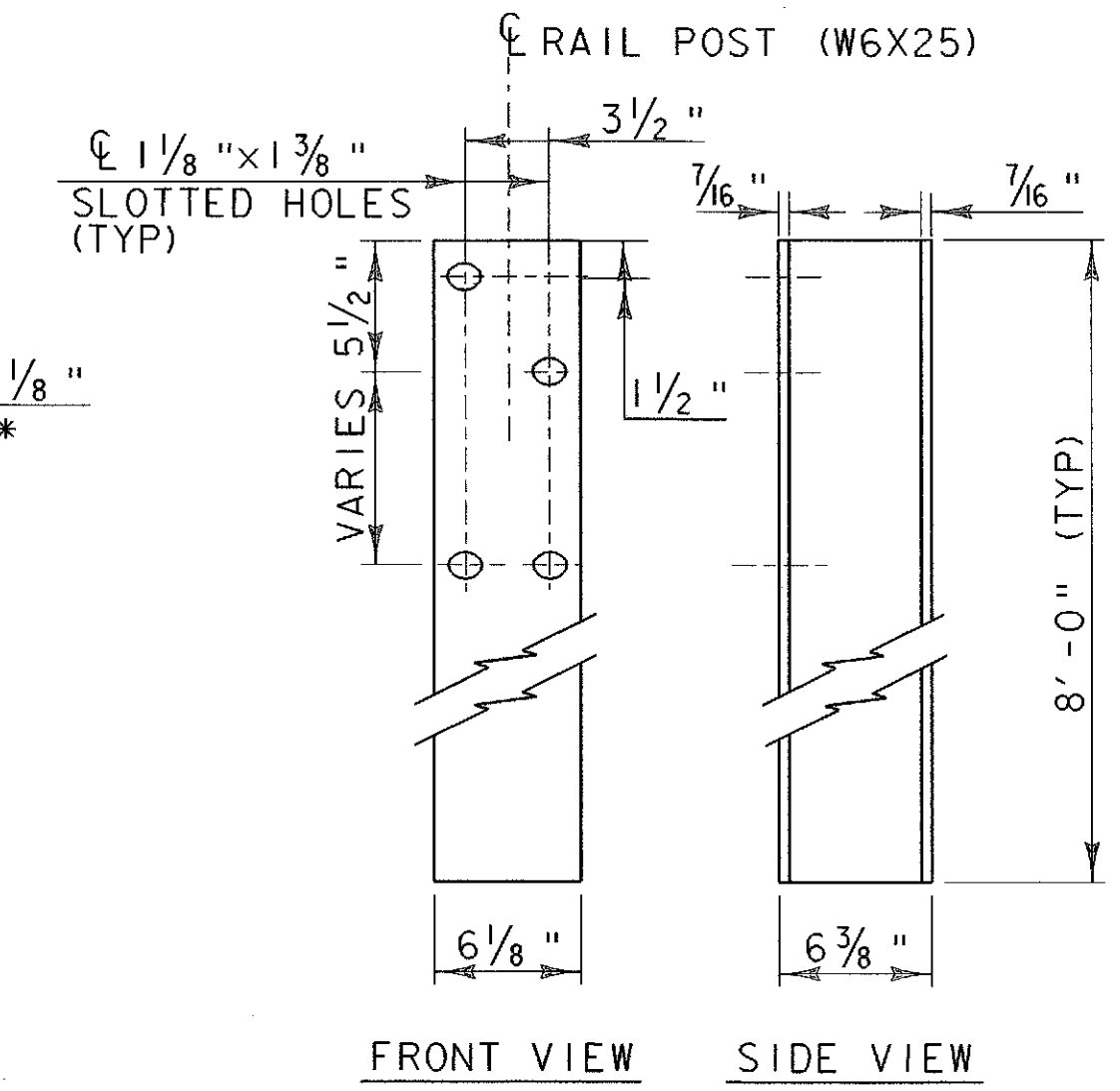
DEFLECTOR PLATE DETAIL

SCALE 1 1/2" = 1'-0"  
1 9 6 3 0



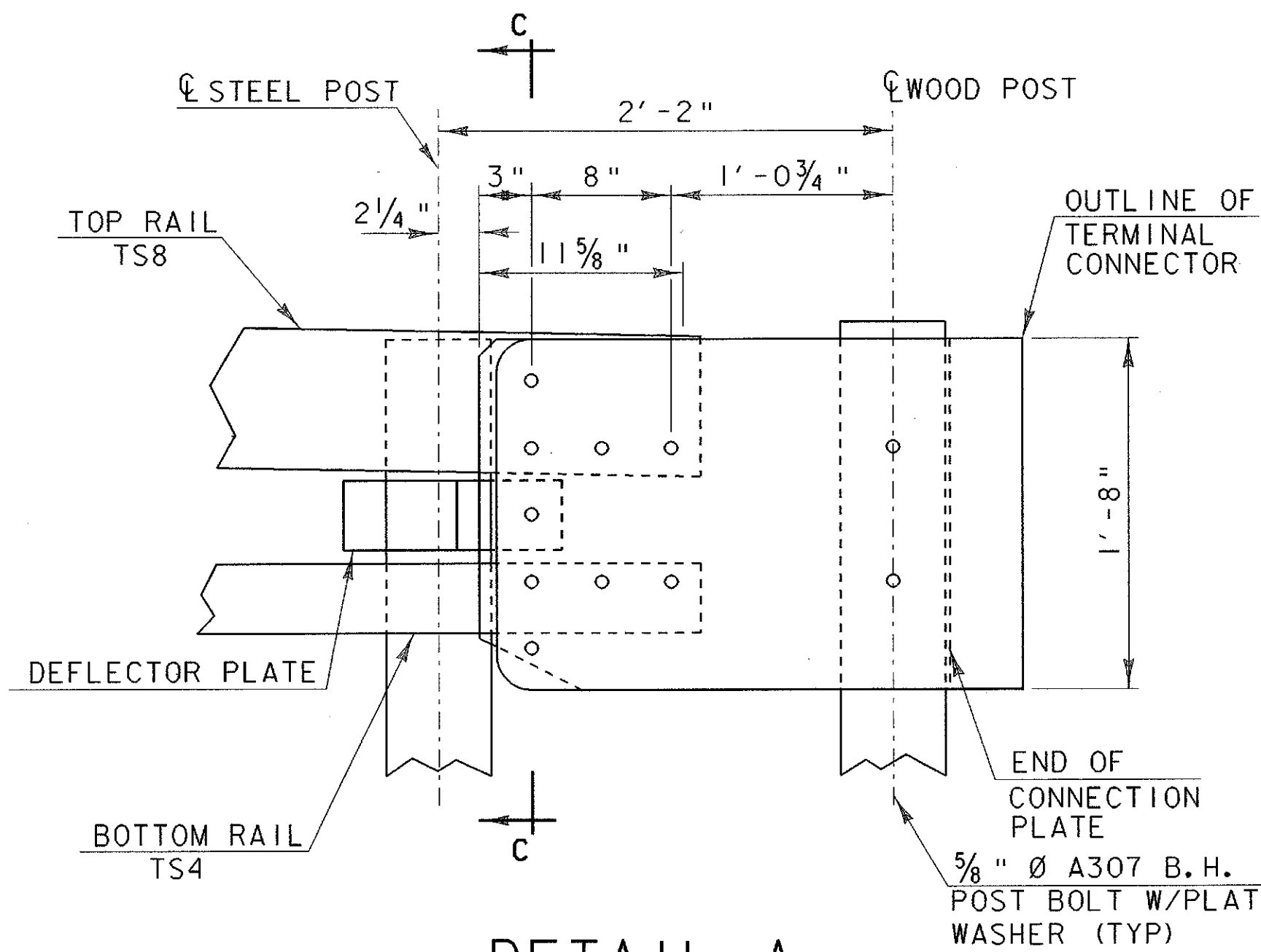
END CAP DETAIL

SCALE 1 1/2" = 1'-0"  
1 9 6 3 0



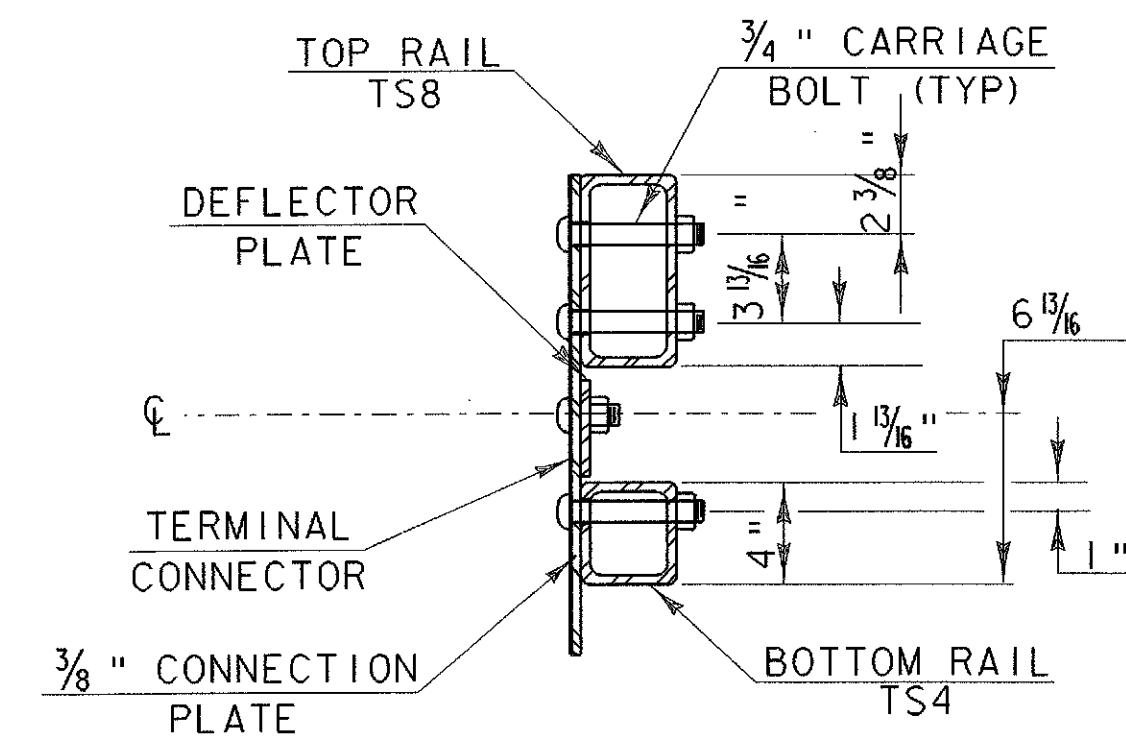
RAIL POST

SCALE 1 1/2" = 1'-0"  
1 9 6 3 0



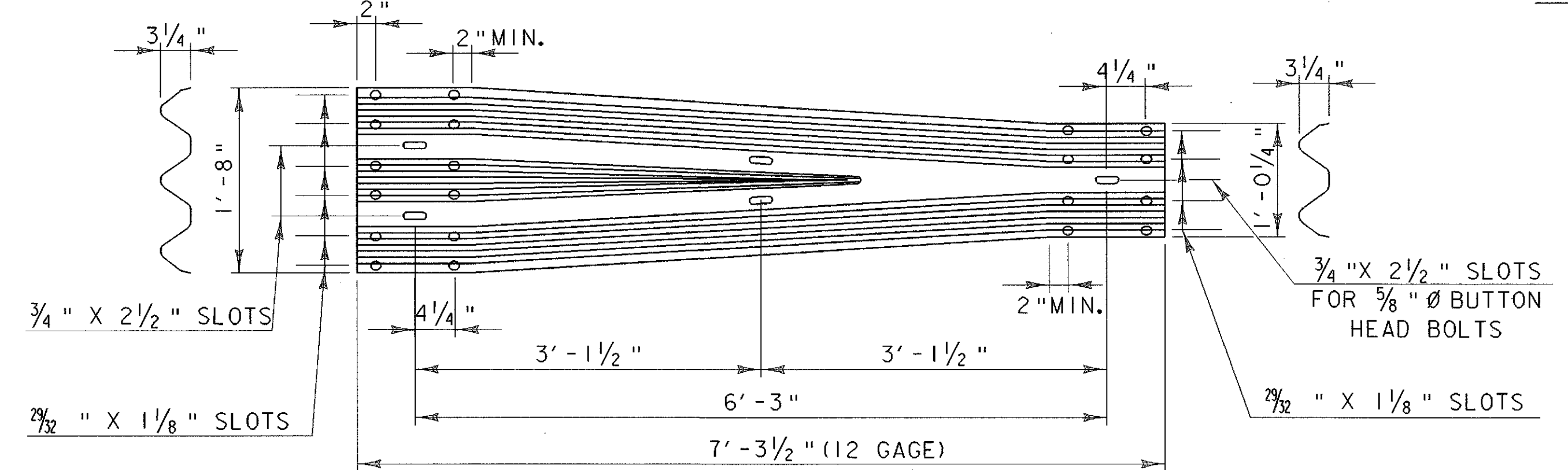
DETAIL A

SCALE 1 1/2" = 1'-0"  
1 9 6 3 0



SECTION C-C (CONNECTION PLATE)

SCALE 1 1/2" = 1'-0"  
1 9 6 3 0



THREE-BEAM TO HDSB TRANSITION SECTION

SCALE 1" = 1'-0"  
1 9 6 3 0

\* WELD TABS TO END CAP PLATE IN TAPERED POSITION SO CAP CAN BE JAMMED INTO END OF RAIL TUBE.  
\*\* ROUND CORNERS 1/2" RADIUS (TYP)

<b>STATE OF VERMONT AGENCY OF TRANSPORTATION</b>	
Town Of <b>HARTFORD-SHARON-ROYALTON</b>	Bridge No.
Highway No. <b>I-89</b>	Log Sta.
	Surv. Sta.
<b>GUARD RAIL APPROACH SECTION NETC 2 RAIL (SHEET 2 OF 2)</b>	
Designed By <b>C.P. WILLIAMS</b>	Drawn By <b>D.G. BASSETT</b>
Checked By <b>C. MEUNIER</b> Date <b>11/98</b>	Bridge Design Supervisor <b>G. S. ROGERS</b> Date <b>11/98</b>
PROJECT <b>HARTFORD-SHARON-ROYALTON IM IR 089-1(B)</b>	PROJECT NO.
I.G.C. \\fsr\cadd\111\ngc\brnet\st\008\Structures\sa008d11.dgn sa008r10J	
Bridge Sheet No. <b>BR 1268</b>	Sheet <b>83B</b> of <b>260</b>