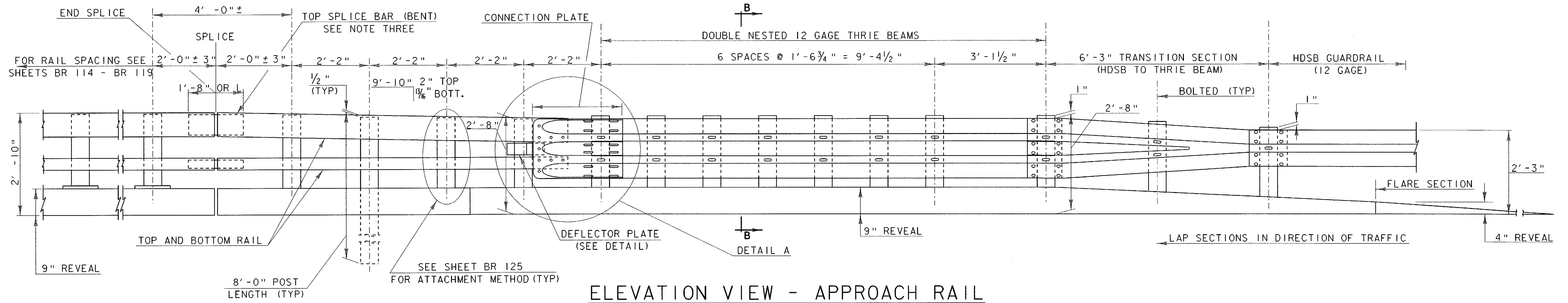


PLAN VIEW - APPROACH RAIL

SCALE 3/4" = 1'-0"



ELEVATION VIEW - APPROACH RAIL

SCALE 3/4" = 1'-0"

NOTES:

- 1) ALL BRIDGE APPROACH RAIL MATERIALS, DIMENSION SIZES, AND NOTES SHALL BE THE SAME AS THOSE OF THE BRIDGE RAIL UNLESS OTHERWISE NOTED.
- 2) CARRIAGE BOLTS SHALL BE ASTM A307 AND NUTS SHALL BE ASTM A563 GRADE A OR BETTER (GALVANIZED).
- 3) WELD TOP SPLICE BAR TO FIT BEND. USE COMPLETE PENETRATION WELD (B-U2).
- 4) REFER TO SHEETS BR 125 & BR 126B FOR ADDITIONAL DETAILS, NOTES, AND MATERIALS SPECIFICATIONS.
- 5) THE REFLECTORIZED ALUMINUM DELINEATION IS TO BE ERECTED EVERY 30' (OR THE CLOSEST POST) WITH 2 NO. 8 X 3/4" SELF TAPPING SCREWS. DELINEATORS SHALL MEET SPECIFICATION REQUIREMENTS FOR ASTM B209 ALLOY 5052-H32.
- 6) REFLECTIVE MATERIAL SHALL MEET REQUIREMENTS OF SUBSECTION 750.08 AND SHALL BE ENCAPSULATED LENS SILVER OR AMBER. AMBER IS TO BE INSTALLED ON THE DRIVERS LEFT AND SILVER ON THEIR RIGHT.
- 7) THE CONCRETE CURB WILL BE PAID FOR AS ITEM 616.28, "CAST-IN-PLACE CONCRETE CURB, TYPE B."

STATE OF VERMONT
AGENCY OF TRANSPORTATION

Town Of HARTFORD-SHARON-ROYALTON	Bridge No.
Highway No. I-89	Log Sta.
	Surv. Sta.
GUARD RAIL APPROACH SECTION	
NETC 2 RAIL (SHEET 1 OF 2)	
Designed By C.P. WILLIAMS	Drawn By D.G. BASSETT
Checked By C. MEUNIER Date 11/98	Bridge Design Supervisor G. S. ROGERS Date 11/98
PROJECT HARTFORD-SHARON-ROYALTON	PROJECT NO. IM IR 089-1(8)
I.G.C. \code\111\ingcab\net\87\008\Structures\sa008d1\dgn sa008rd91	
Bridge Sheet No. BR 126A	Sheet 83A of 260