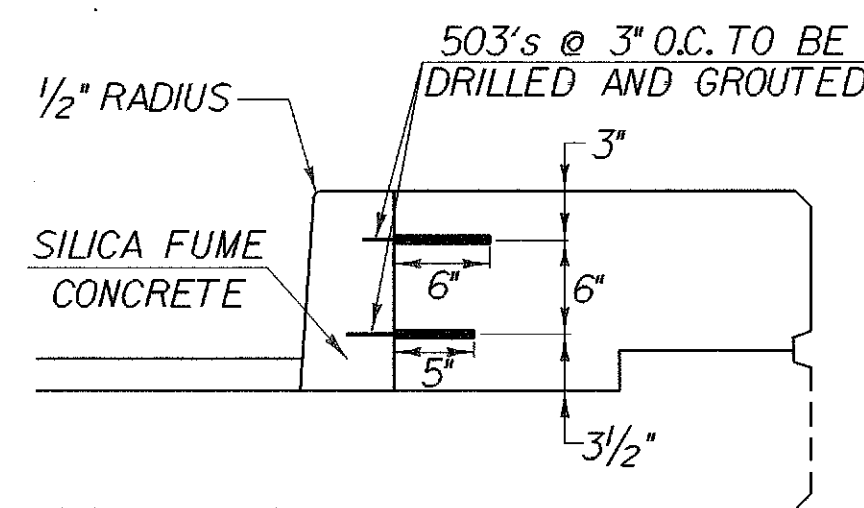
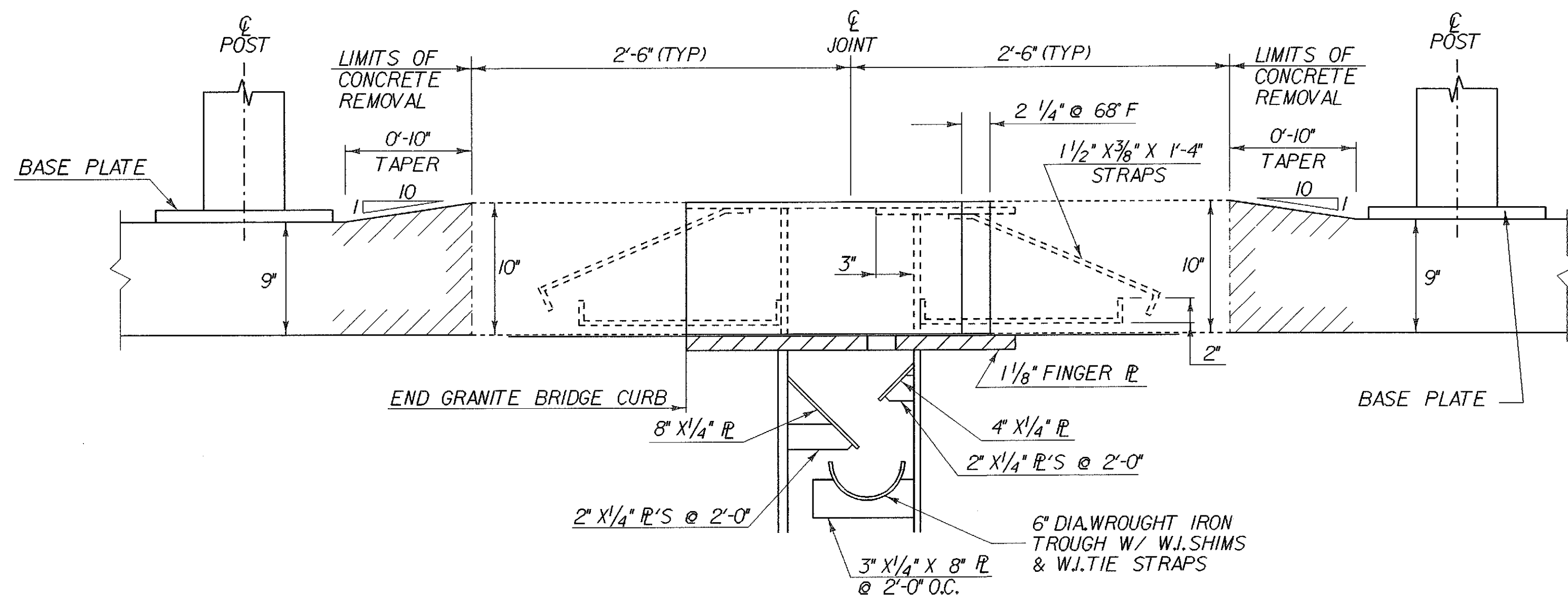


FINGER PLATE DETAIL

SCALE: 1" = 1'-0"

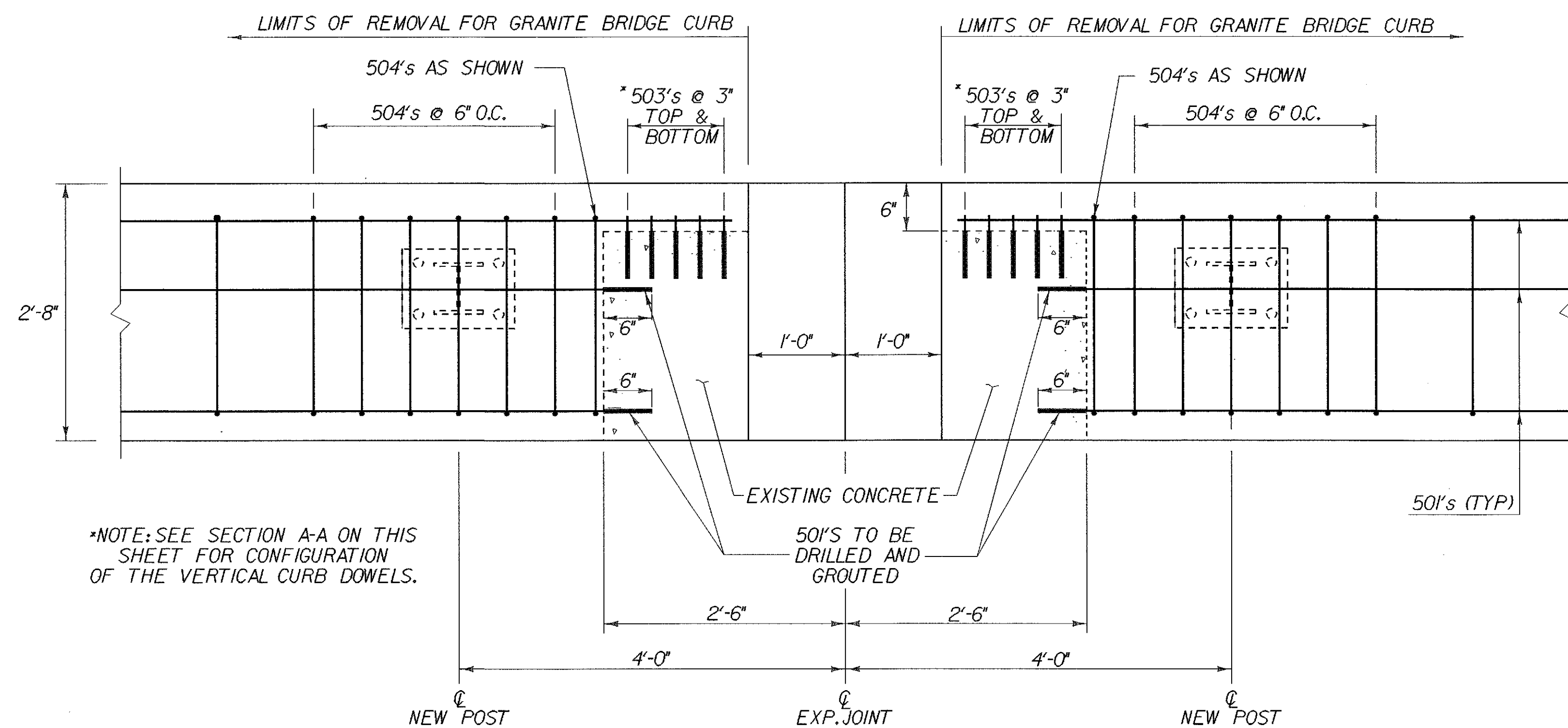


SECTION A-A
NO SCALE



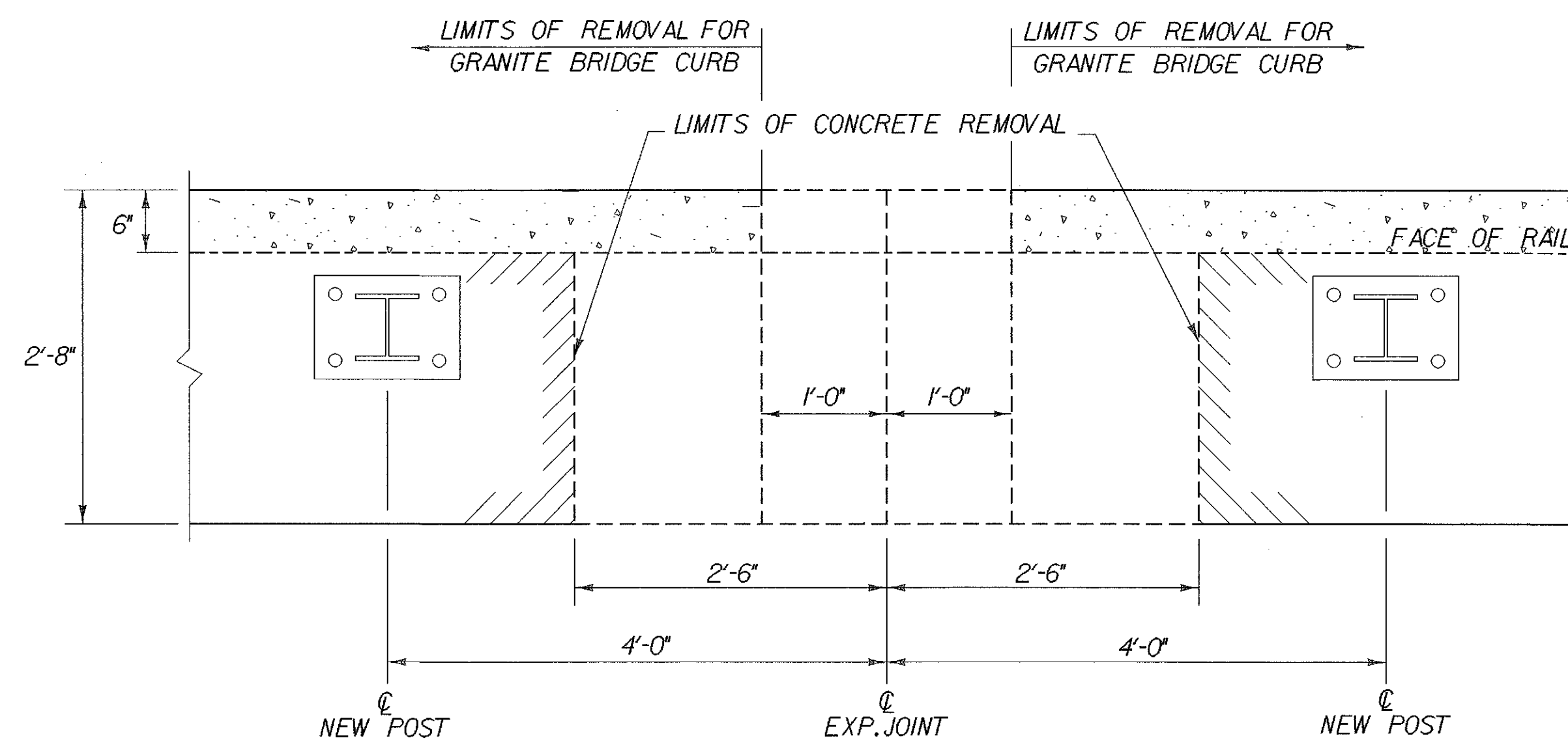
SECTION B-B

SCALE: 1 1/2" = 1'-0"



DETAIL OF REINFORCING FOR NETC RAIL POSTS AT THE FINGER PLATE EXPANSION JOINTS

SCALE: 1" = 1'-0"



DETAIL OF POST SPACING FOR FINGER PLATE EXPANSION JOINT

SCALE: 1" = 1'-0"

NOTES

1. ALL OF THE EXISTING CURB CONCRETE DOWN TO THE SCOREMARK WILL BE REMOVED TO WITHIN 2'-6" OF THE CENTERLINE OF THE FINGER PLATE JOINT.
2. ALL OF THE VERTICAL GRANITE CURB ON THE BRIDGES WILL BE REMOVED AND REPLACED WITH SILICA FUME CONCRETE.
3. IN THE AREAS WHERE THE VERTICAL CURB IS REMOVED BEYOND THE LIMITS OF THE CONCRETE REMOVAL, THE VERTICAL GRANITE CURB WILL BE REPLACED WITH SILICA FUME CONCRETE. SEE SECTION A-A ON THIS SHEET FOR DETAILS.
4. CARE WILL BE TAKEN IN THE AREAS OF THE FINGER PLATE EXPANSION TO ENSURE THAT NO DAMAGE IS DONE TO THE FINGER PLATE EXPANSION DEVICE OR THE STRAPS THAT ANCHOR THE DEVICE.
5. SEE REFERENCE SHEETS BR 153 (BRIDGE 16) AND SHEET BR 157 (BRIDGE 17) FOR ADDITIONAL DETAILS.
6. IF THERE IS CONCRETE SPALLING OF THE CURB AND/OR DECK AREA AT THE FINGER PLATE EXPANSION JOINT THEN ALL CONCRETE WILL BE REMOVED TO THE CURB PLATE AND REPLACED WITH ITEM 501.60 "SILICA FUME CONCRETE". THE CONTRACTOR WILL BE RESPONSIBLE FOR MAINTAINING THE POSITION OF THE EXPANSION JOINT PLATES IN THE CURB AS DIRECTED BY THE ENGINEER IN THE FIELD.

STATE OF VERMONT AGENCY OF TRANSPORTATION			
Town Of HARTFORD-SHARON-ROYALTON	Bridge No. 16N&S AND 17N&S		
Highway No. 189	Log Sta.		
	Surv. Sta.		
FINGER PLATE EXPANSION JOINT DETAILS			
BRIDGES 16 N & S AND 17 N & S			
Designed By C. MEUNIER	Date 11/98	Drawn By STRI	Bridge Design Supervisor G.S. ROGERS
PROJECT HARTFORD-SHARON-ROYALTON		PROJECT NO. IM IR 089-1(B)	
I.G.C. <small>\\vg001\cadd\111ngob\net\87\0008\Structures\sa008dfl.dgn</small> <small>sa008r.plt</small>			
Bridge Sheet No. BR 123	Sheet 80 of 260		