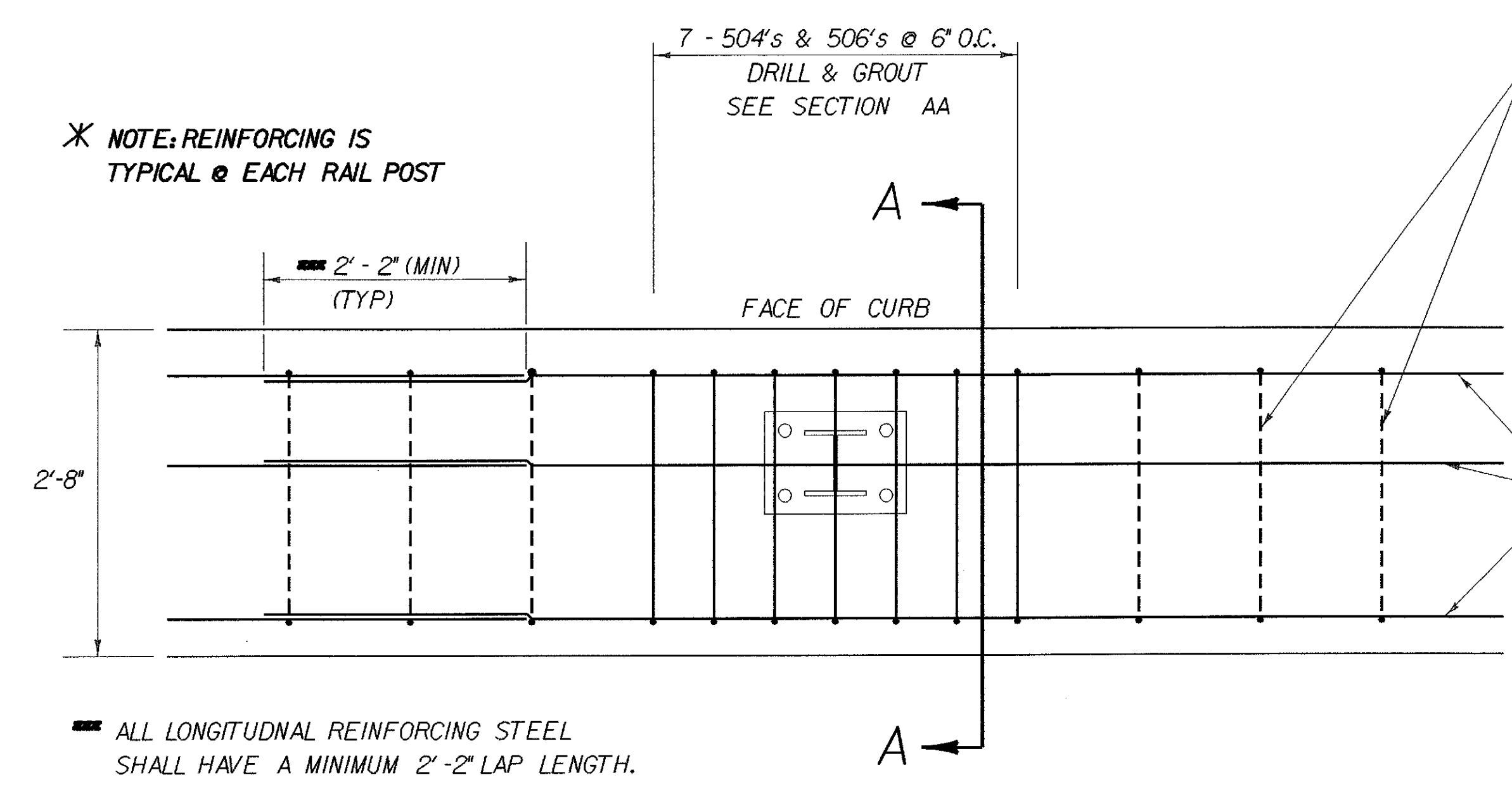


* NOTE: REINFORCING IS TYPICAL @ EACH RAIL POST



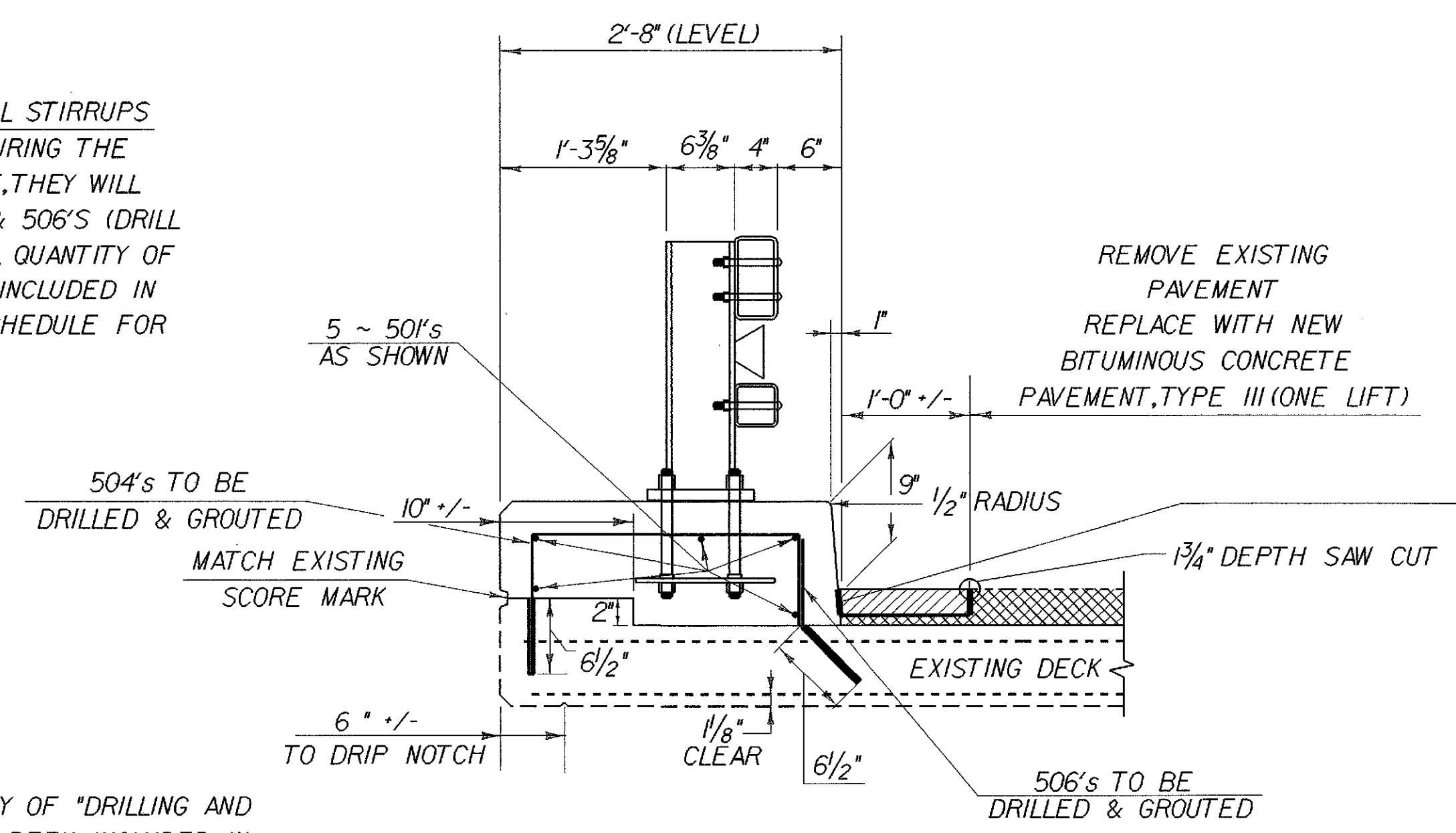
POST ANCHOR REINFORCING (2'-8" CURB)

SCALE: 1" = 1'-0"

EXISTING REINFORCING STEEL STIRRUPS IF THESE ARE DAMAGED DURING THE REMOVAL OF THE CONCRETE, THEY WILL BE REPLACED WITH 504'S & 506'S (DRILL & GROUTED). ** AN ADDITIONAL QUANTITY OF 504'S & 506'S HAVE BEEN INCLUDED IN THE REINFORCING STEEL SCHEDULE FOR EACH BRIDGE.

504'S TO BE DRILLED & GROUTED

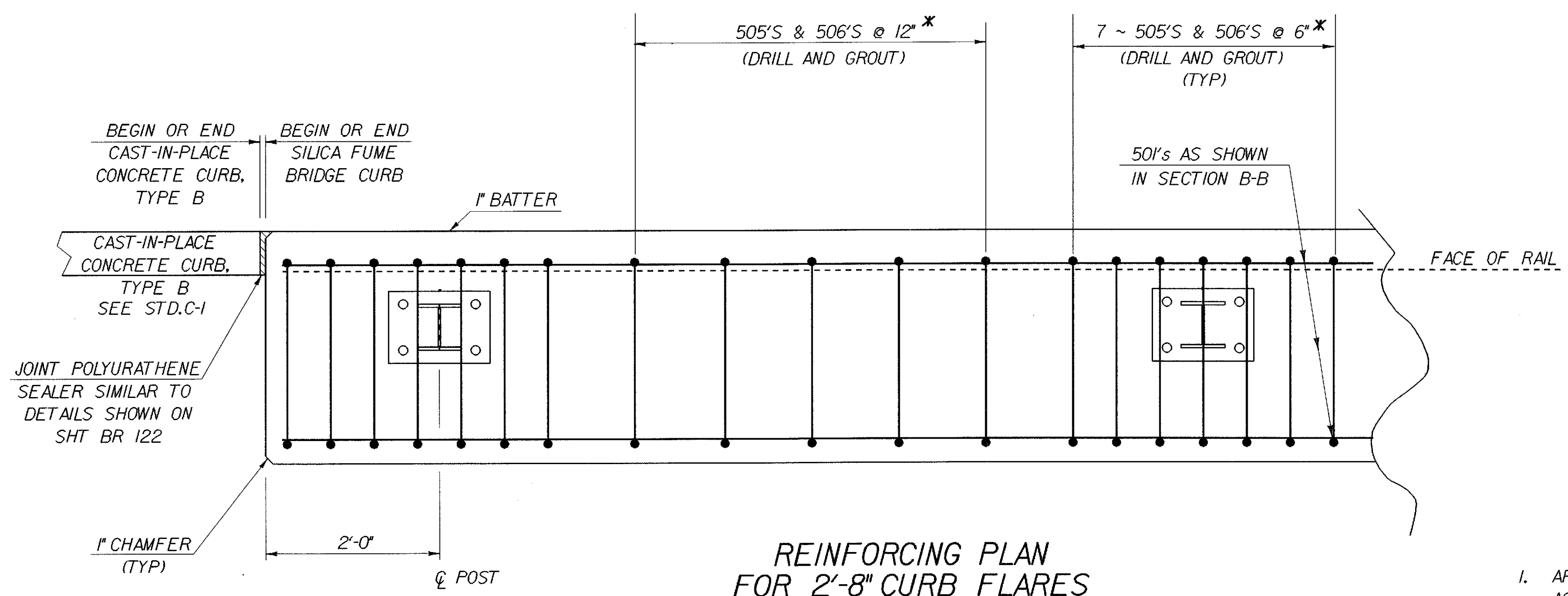
** AN ADDITIONAL QUANTITY OF "DRILLING AND GROUTING DOWELS" HAS BEEN INCLUDED IN THIS QUANTITY FOR EACH BRIDGE.



SECTION A-A

SCALE: 1" = 1'-0"

THE FACE OF CURB IN THIS AREA SHALL BE COATED WITH A LIQUID MEMBRANE PER SECTION 519 AND THEN THE AREA IN FRONT OF THE CURB PAVED. THIS WORK WILL BE SUBSIDIARY TO ITEM 406.25, "BITUMINOUS CONCRETE PAVEMENT".



REINFORCING PLAN FOR 2'-8" CURB FLARES

SCALE: 1" = 1'-0"

* THE EXISTING REINFORCING STIRRUPS SHALL ALL BE REPLACED IN THE CURB AT EACH CORNER OF EACH BRIDGE. THE 504'S & 506'S SHALL BE DRILLED AND GROUTED A MINIMUM OF 9" INTO THE EXISTING WINGWALLS OR APPROACH SLABS.

NOTES:

1. AREAS OF THE EXISTING WINGWALL OR APPROACH SLABS THAT BECOME EXPOSED AS A RESULT OF THE CONSTRUCTION OF THE NEW CURB END TREATMENTS WILL BE COATED WITH A LIQUID MEMBRANE PER SECTION 519 AND THEN PAVED.
2. ALL EXPOSED REINFORCING STEEL SHALL BE SAND BLASTED CLEAN. THE EXISTING CONCRETE AND ALL REINFORCING STEEL SHALL BE THOROUGHLY WETTED AND THE CONCRETE COATED WITH NEAT CEMENT GROUT APPLIED AS PER SUBSECTION 501.3(b) OF THE STANDARD SPECIFICATIONS. PAYMENT FOR THE WORK WILL BE SUBSIDIARY TO ITEM 501.60, "SILICA FUME CONCRETE".
3. REINFORCING STEEL SHALL HAVE 3" CLEAR COVER EVERYWHERE UNLESS OTHERWISE NOTED.
4. BRIDGES WITH 2'-8" CURB INCLUDE BR 6NB (LT), 6SB (RT), 8, 15NB (LT), 15SB (RT), 16NB, 16SB, 17NB, 17SB, 18NB, AND 18SB (LT AND RT ARE WITH RESPECT TO STATIONING)

STATE OF VERMONT AGENCY OF TRANSPORTATION			
Town Of HARTFORD-SHARON-ROYALTON	Bridge No.		
Highway No. I-89	Log Sta.		
	Surv. Sta.		
NEW CURB DETAILS FOR 2'-8" CURB			
Designed By C. MEUNIER	Drawn By M. PELOQUIN		
Checked By C. MEUNIER	Date 11/98	Bridge Design Supervisor G. S. ROGERS	Date 11/98
PROJECT HARTFORD-SHARON-ROYALTON		PROJECT NO. IM IR 089-1(8)	
I.G.C. \\\cadd\111ngcabnet\87a008\Structures\sa008dfl.dgn		sa008ce2j	
Bridge Sheet No. BR 121	Sheet 78	of 260	