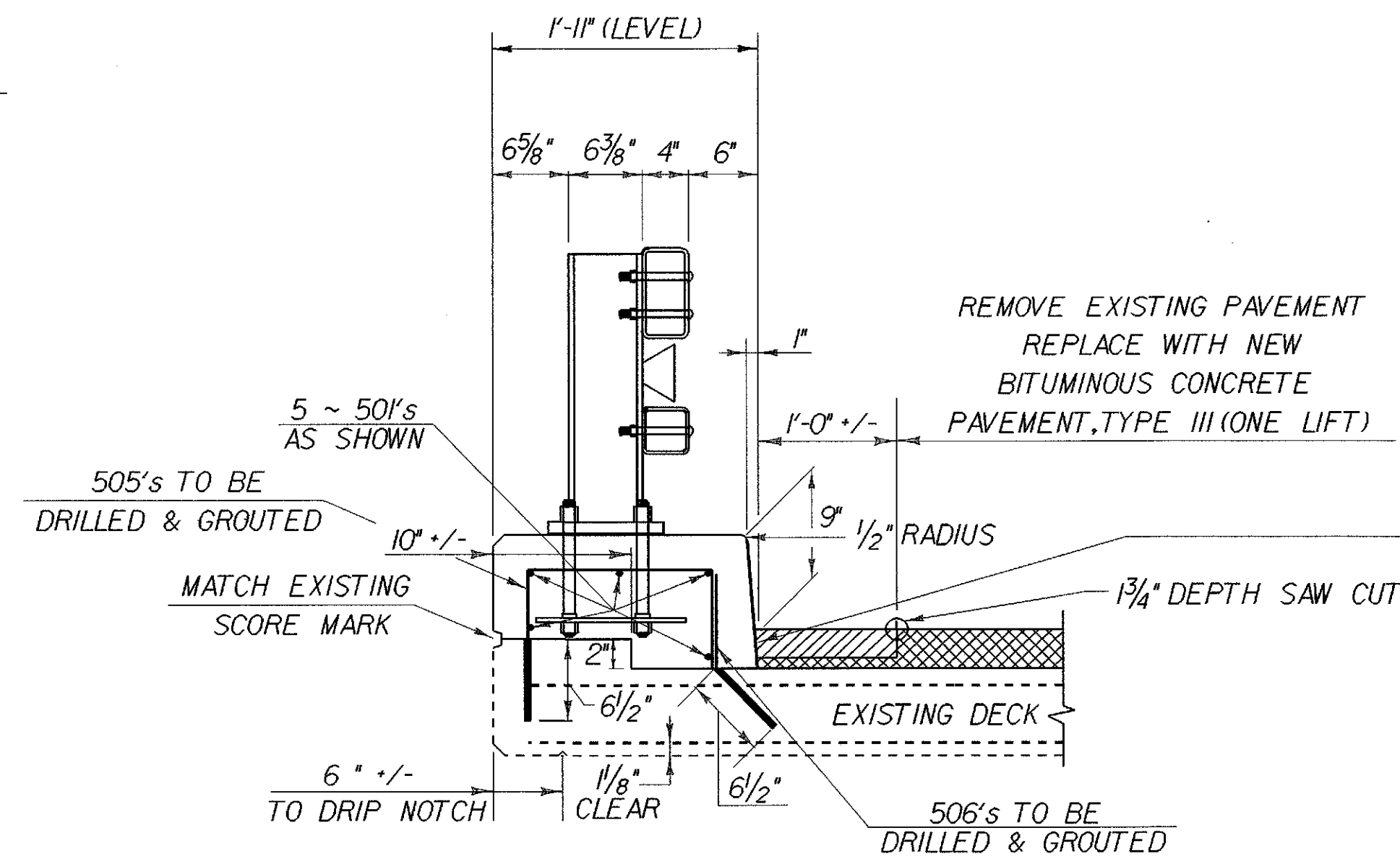


POST ANCHOR REINFORCING (1'-11" CURB)

SCALE: 1" = 1'-0"

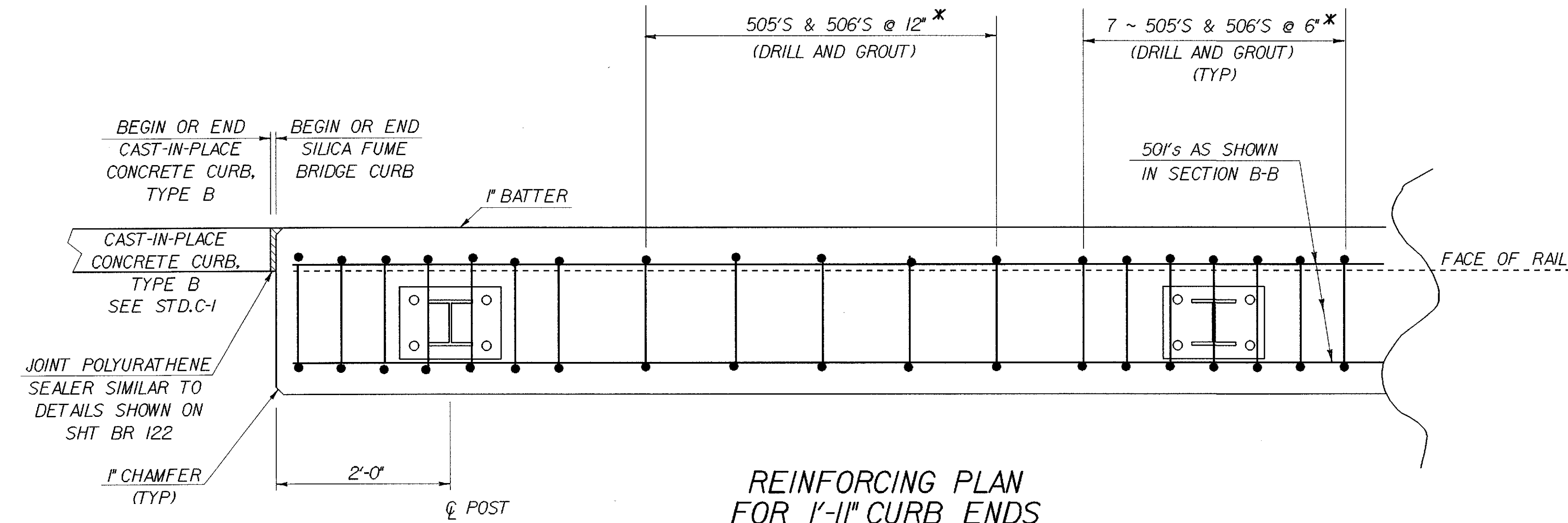


SECTION B-B

SCALE: 1" = 1'-0"

THE FACE OF CURB IN THIS AREA SHALL
BE COATED WITH A LIQUID MEMBRANE PER
SECTION 519 AND THEN THE AREA IN FRONT
OF THE CURB PAVED. THIS WORK WILL BE
SUBSIDIARY TO ITEM 406.25, "BITUMINOUS
CONCRETE PAVEMENT".

** AN ADDITIONAL QUANTITY OF "DRILLING AND
GROUTING DOWELS HAS BEEN INCLUDED IN
THIS QUANTITY FOR EACH BRIDGE.



**REINFORCING PLAN
FOR 1'-11" CURB ENDS**

SCALE: 1" = 1'-0"

NOTES:

1. AREAS OF THE EXISTING WINGWALL OR APPROACH SLABS THAT BECOME EXPOSED AS A RESULT OF THE CONSTRUCTION OF THE NEW CURB END TREATMENTS WILL BE COATED WITH A LIQUID MEMBRANE PER SECTION 519 AND THEN PAVED.
2. ALL EXPOSED REINFORCING STEEL SHALL BE SAND BLASTED CLEAN, THE EXISTING CONCRETE AND ALL REINFORCING STEEL SHALL BE THOROUGHLY WETTED AND THE CONCRETE COATED WITH NEAT CEMENT GROUT APPLIED AS PER SUBSECTION 501J3(b) OF THE STANDARD SPECIFICATIONS. PAYMENT FOR THE WORK WILL BE SUBSIDIARY TO ITEM 501.60, "SILICA FUME CONCRETE".
3. REINFORCING STEEL SHALL HAVE 3" CLEAR COVER EVERYWHERE UNLESS OTHERWISE NOTED.
4. BRIDGES WITH 1'-11" CURB INCLUDE BR 6NB (RT), 6SB (LT), 15NB (RT), AND 15SB (LT) (LT AND RT ARE WITH RESPECT TO STATIONING)

* THE EXISTING REINFORCING STIRRUPS SHALL ALL BE REPLACED IN THE CURBS AT EACH CORNER OF EACH BRIDGE. THE 505'S & 506'S SHALL BE DRILLED AND GROUTED A MINIMUM OF 9" INTO THE EXISTING WINGWALLS OR APPROACH SLABS.

STATE OF VERMONT AGENCY OF TRANSPORTATION	
Town Of HARTFORD-SHARON-ROYALTON	Bridge No.
Highway No. I-89	Log Sta. Surv. Sta.
NEW CURB DETAILS FOR 1'-11" CURB	
Designed By C. MEUNIER	Drawn By M. PELLOQUIN
Checked By C. MEUNIER Date 11/98	Bridge Design Supervisor G. S. ROGERS Date 11/98
PROJECT HARTFORD-SHARON-ROYALTON PROJECT NO. IM IR 089-1(8)	
I.G.C. \cadd\11lncablnet\87a008\Structures\sa008d11.dgn sa008cel1	
Bridge Sheet No. BR 120	Sheet 77 of 260

PLOTTED 20-NOV-2000