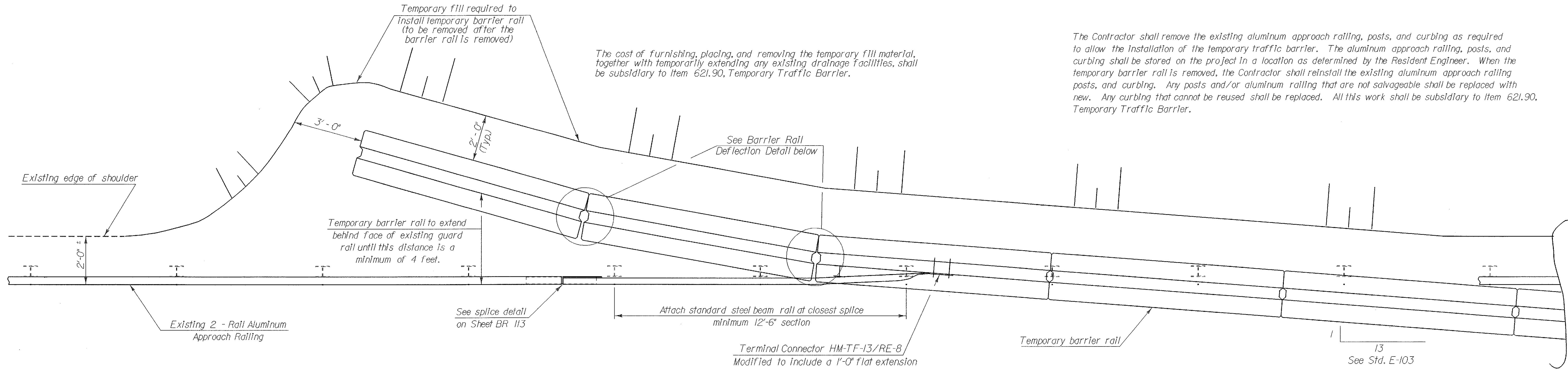
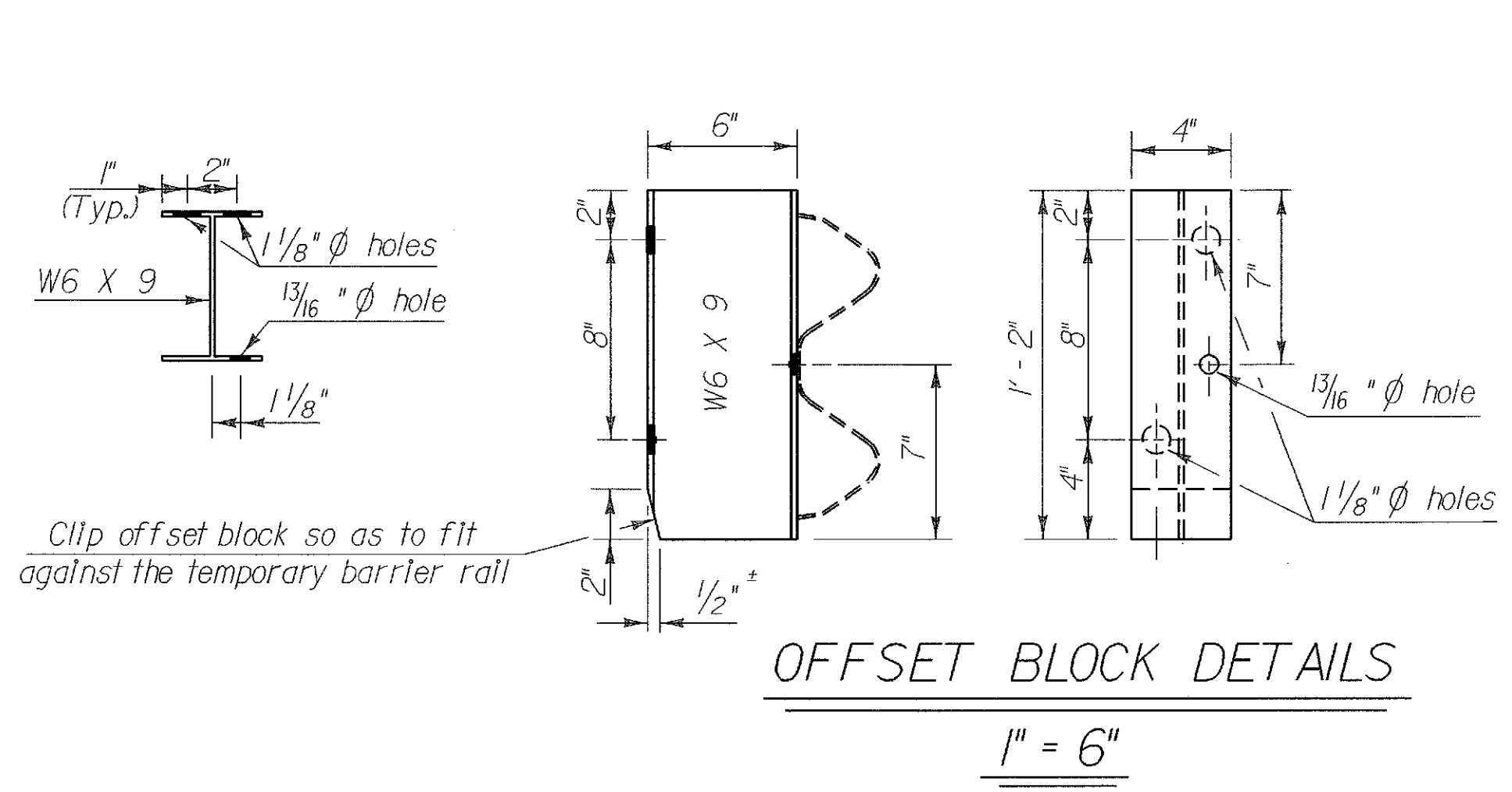


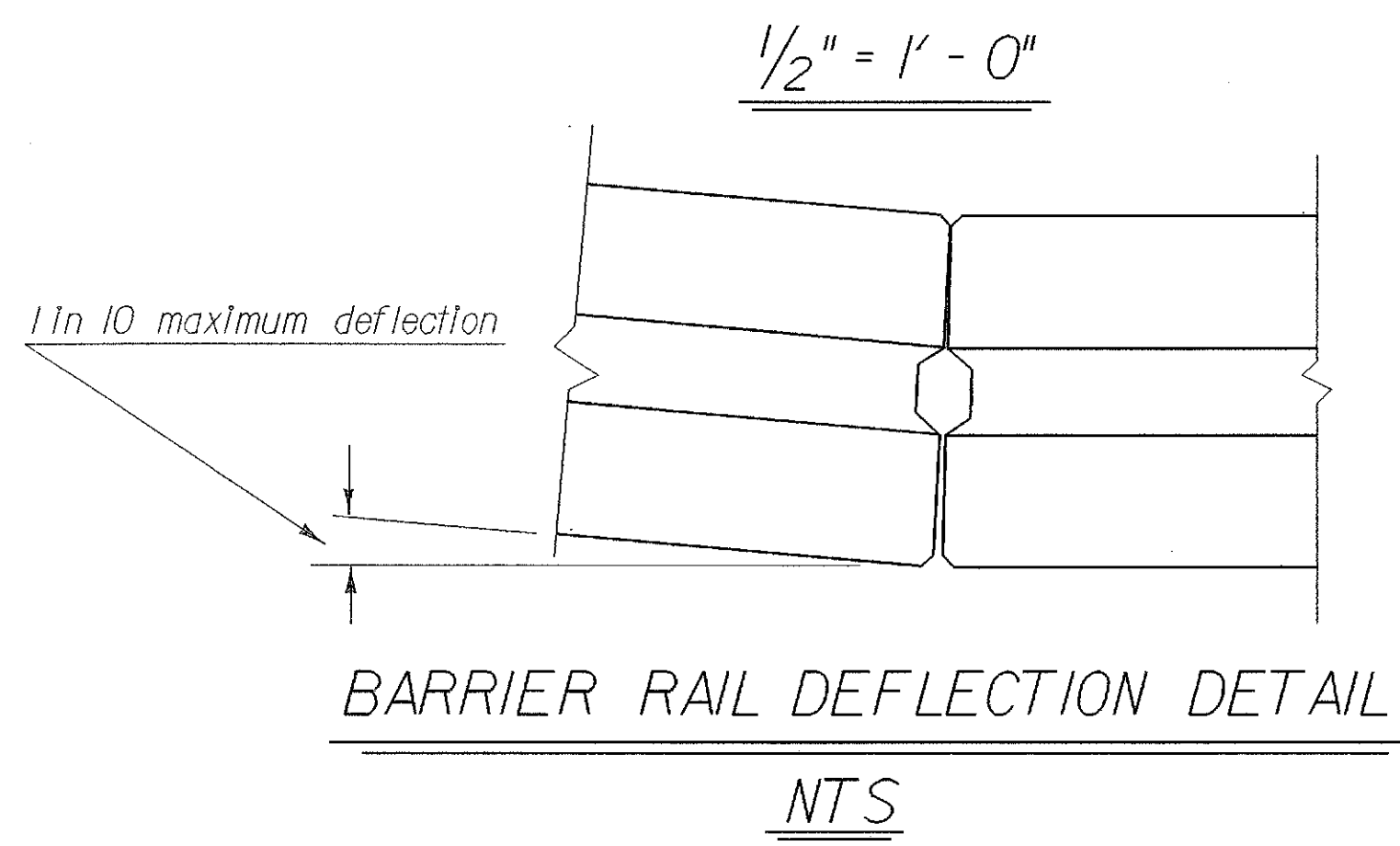
The Contractor shall remove the existing aluminum approach railing, posts, and curbing as required to allow the installation of the temporary traffic barrier. The aluminum approach railing, posts, and curbing shall be stored on the project in a location as determined by the Resident Engineer. When the temporary barrier rail is removed, the Contractor shall reinstall the existing aluminum approach railing posts, and curbing. Any posts and/or aluminum railing that are not salvageable shall be replaced with new. Any curbing that cannot be reused shall be replaced. All this work shall be subsidiary to Item 621.90, Temporary Traffic Barrier.



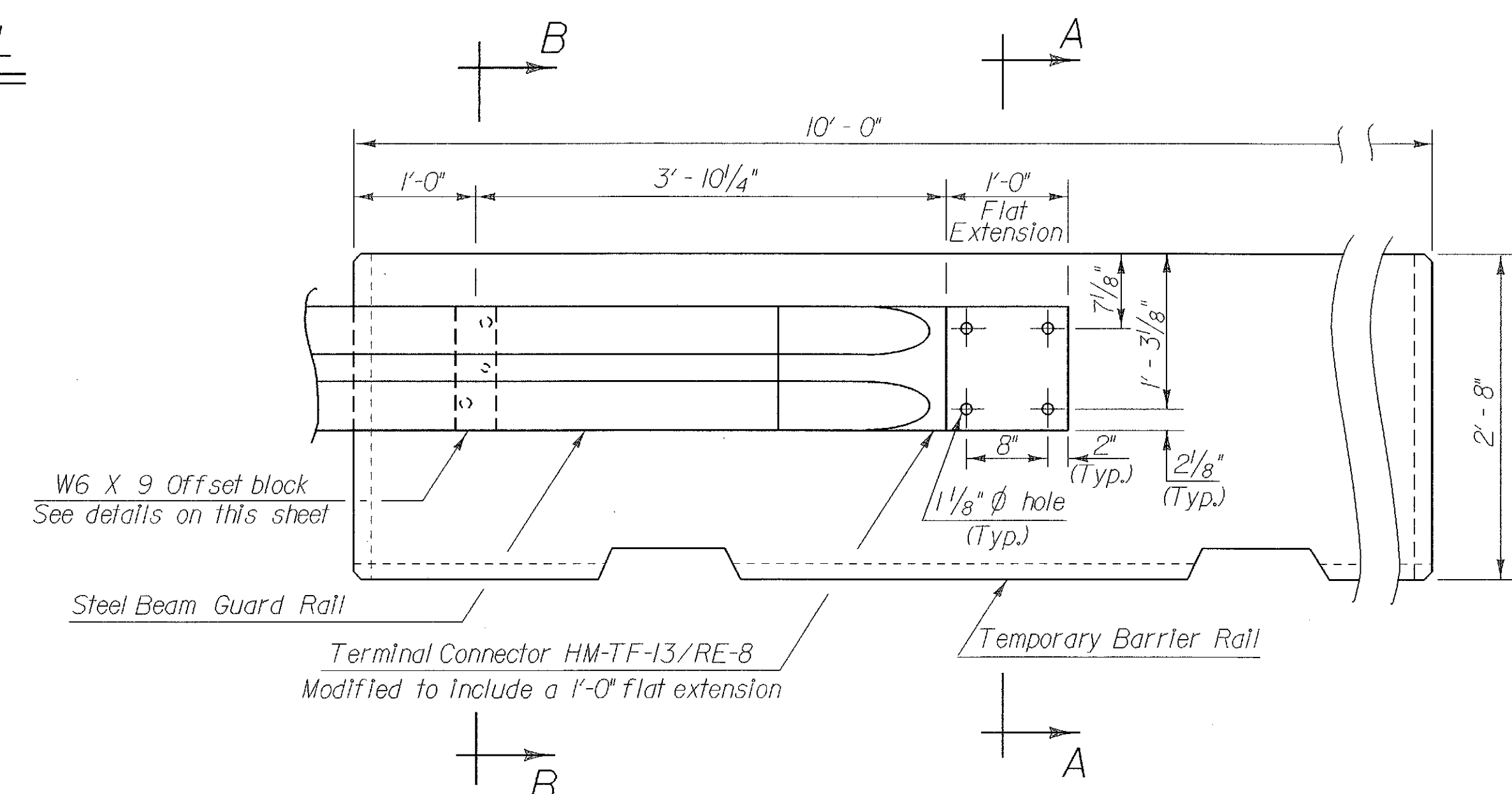
PLAN VIEW SHOWING POSITIVE CONNECTION BETWEEN TEMPORARY BARRIER RAIL AND EXISTING ALUMINUM RAIL



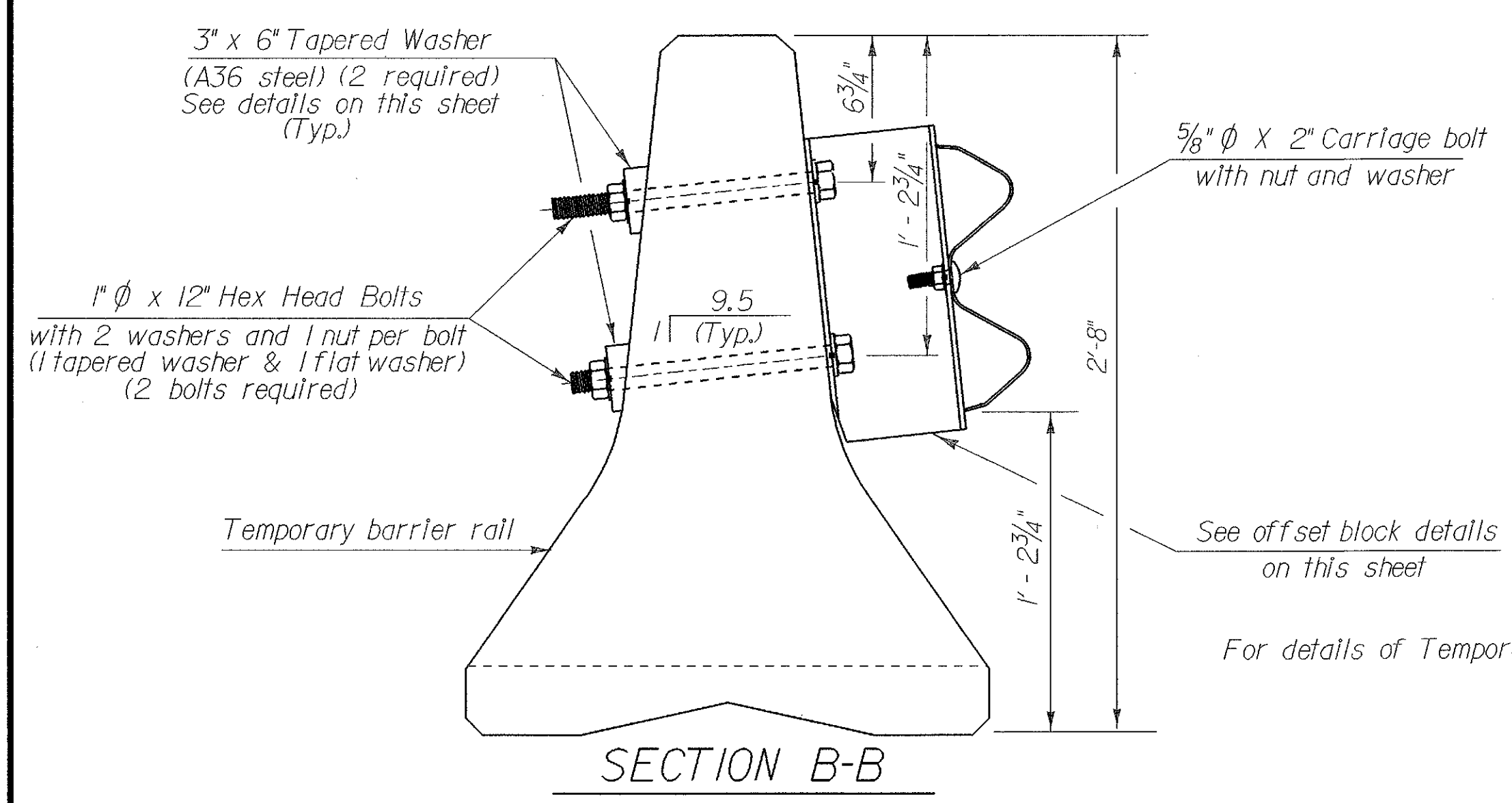
OFFSET BLOCK DETAILS
1" = 6"



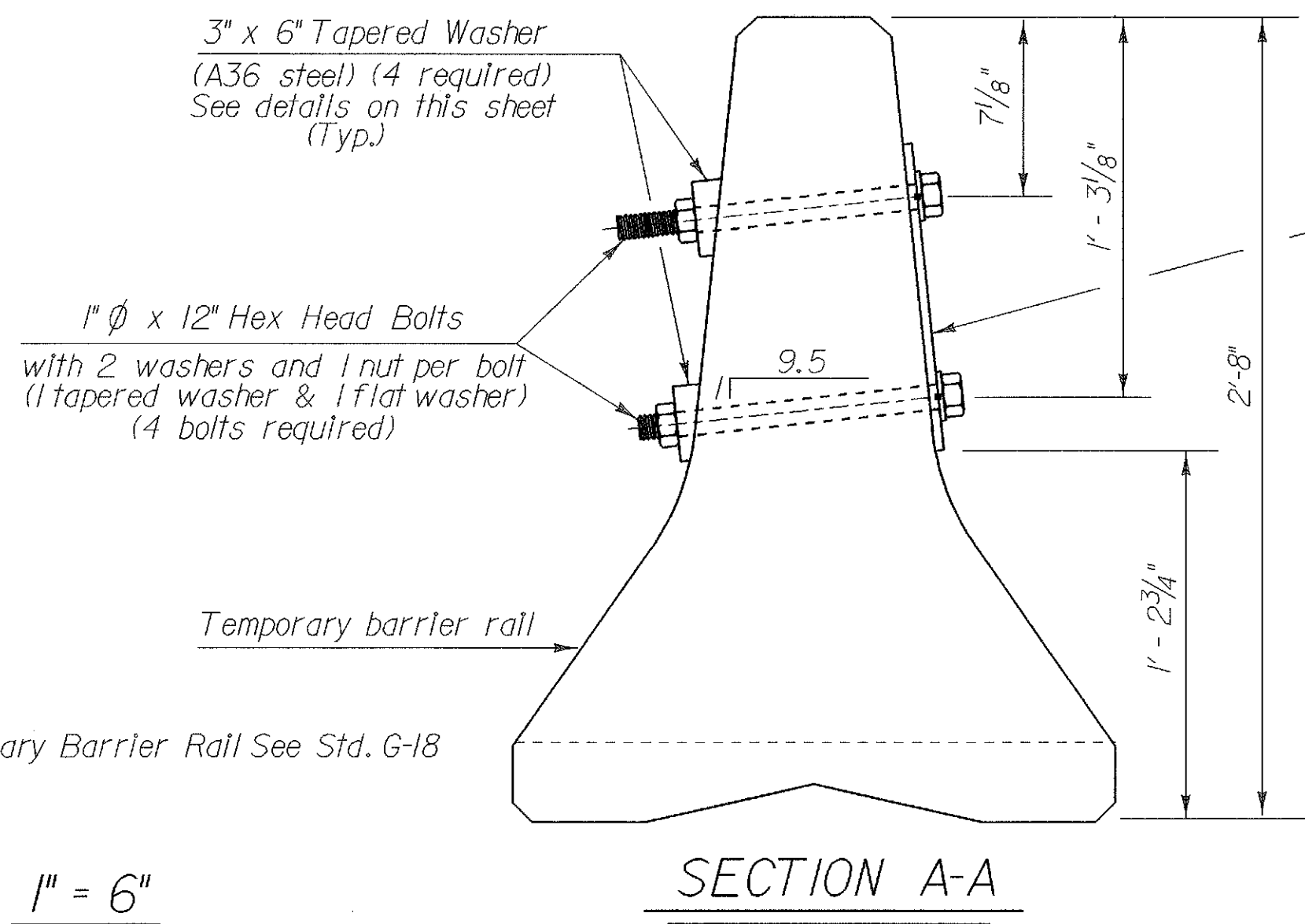
BARRIER RAIL DEFLECTION DETAIL
NTS



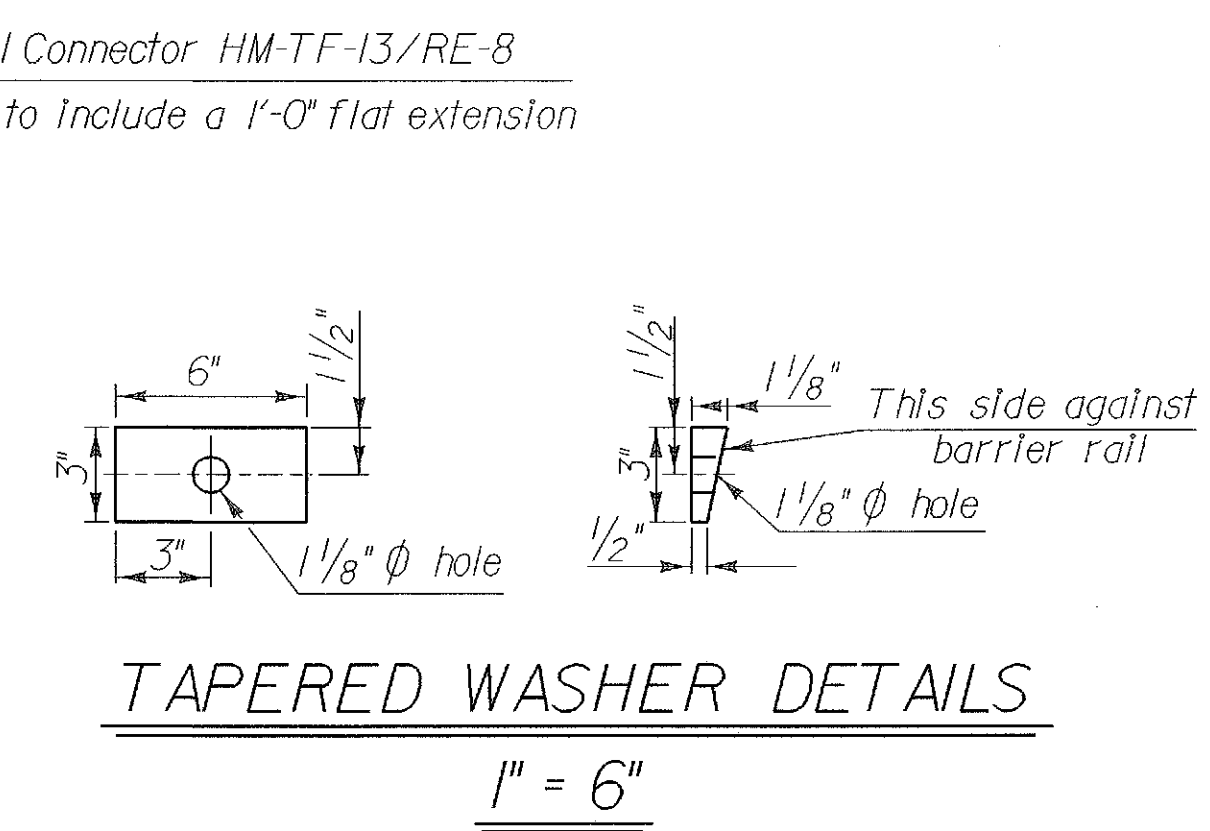
ELEVATION VIEW SHOWING POSITIVE CONNECTION BETWEEN TEMPORARY BARRIER RAIL AND EXISTING GUARD RAIL
1" = 1'-0"



SECTION B-B
1" = 6"



SECTION A-A
1" = 6"



TAPERED WASHER DETAILS
1" = 6"

STATE OF VERMONT AGENCY OF TRANSPORTATION	
Town of HARTFORD-SHARON-ROYALTON	Bridge No.
Highway No. 189	Log Sta. Surv. Sta.
POSITIVE CONNECTION DETAILS BETWEEN BARRIER RAIL & EXISTING ALUMINUM RAILING	
Designed By C. MEUNIER	Drawn By S. MAGNAN
Checked By C. MEUNIER Date 11/98	Bridge Design Supervisor G.S. ROGERS Date 11/98
PROJECT HARTFORD-SHARON-ROYALTON	PROJECT NO. IM IR 089-1(B)
I:\G:\web\cadd\11\ingob\1net\87a008\Structures\sa008trt.dwg\008trt.dwg	
Bridge Sheet No. BR III	Sheet 68 of 260