

HARTFORD INTERCHANGE I 91 #10

NOTE:
CONSTRUCTION NOTES ARE ONLY FOR AREA SHOWN ON LAYOUT.

REMOVAL AND DISPOSAL OF GUARDRAIL
NORTHBOUND mm 0.53 OUT (25' BCT)
NORTHBOUND mm 0.30 MED (25' BCT)
RAMP "A" 24+00 LT (25' BCT & 12.5' GUARDRAIL)
RAMP "A" 30+00 LT (50' TEXAS TWIST)
SOUTHBOUND mm 0.04 ~ 0.08 MED (PIER RING 262.5')
SOUTHBOUND mm 0.44 ~ 0.47 MED (PIER RING 262.5')
SOUTHBOUND mm 0.54 ~ 0.59 MED (PIER RING 475')
SOUTHBOUND mm 0.75 ~ 0.79 MED (50')

RENTAL ITEMS
NORTHBOUND mm 0.35 - 0.53 (BETWEEN RAMPS "A" & "B" ON I-89 S)
TO IMPROVE SIGHT DISTANCE & FLATTEN SLOPE)
NORTHBOUND mm 0.73 - 0.83 (BETWEEN RAMPS "C" & "H" ON I-89)
TO IMPROVE SIGHT DISTANCE & FLATTEN SLOPE)
TH-#78E LT (155')
TH-#78E RT (350')
TH-#78W LT (455')
TH-#78W RT (315')

STEEL BEAM GUARDRAIL
NORTHBOUND mm 0.59 ~ 0.61 OUT (27')
NORTHBOUND mm 0.30 ~ 0.31 MED (37.5')
SOUTHBOUND mm 0.59 OUT (37.5')
RAMP "C" 6+50 ~ 4+50 RT (202')
SOUTHBOUND mm 0.04 ~ 0.08 MED (212.5')
SOUTHBOUND mm 0.44 ~ 0.47 MED (PIER RING 262.5')
SOUTHBOUND mm 0.54 ~ 0.59 MED (PIER RING 475')
SOUTHBOUND mm 0.75 ~ 0.79 MED (214.5')
RAMP "D" 27+25 ~ 24+00 RT (325')
TH-#78E LT (162.5')
TH-#78E RT (350')
TH-#78W LT (475')
TH-#78W RT (325')

TREATED TIMBER CURB
NORTHBOUND mm 0.04 OUT ~ RAMP "A" 22+00 RT (1500')

BIT. CONC. GUTTERS AND TRAFFIC ISLANDS
① NORTHBOUND mm 0.04 ~ 0.40 MED (178 TONS) (MINUS U-TURN)
② RAMP "G" 2+50 RT (2 TONS)
③ RAMP "G" 5+75 RT (2 TONS)
④ NORTHBOUND mm 0.05 OUT (3 TONS)
NOTE: CLEAN GUTTER PRIOR TO REPAVING

REMOVING AND RESETTING CURB
① RAMP "B" 0+00 ~ 11+50 RT (1150')
② RAMP "F" 0+00 ~ 14+25 RT (1425')
③ RAMP "C" 0+00 ~ 9+29 RT (929')

REMOVAL OF EXISTING CURB
NORTHBOUND mm 0.04 OUT ~ RAMP "A" 22+00 RT (1500')
RAMP "B" 11+50 ~ 12+38 RT (88')
RAMP "F" 14+25 ~ 14+94 RT (69')

SNOW BARRIER - GALVANIZED
BRIDGE #3 120' LT OVER I-89 NB/SB LANES
BRIDGE #3 120' RT OVER I-89 NB/SB LANES

REHAB AND CHANGE ELEVATION OF DI, CB OR MH
① NORTHBOUND mm 0.04 MED (DI)
② NORTHBOUND mm 0.18 MED (DI)
③ NORTHBOUND mm 0.05 OUT (CURB DI)
④ NORTHBOUND mm 0.23 OUT (CURB DI)
⑤ NORTHBOUND mm 0.27 OUT (CURB DI)
⑥ NORTHBOUND mm 0.28 OUT (CURB DI)
⑦ NORTHBOUND mm 0.32 OUT (CURB DI)
⑧ NORTHBOUND mm 0.88 OUT (CURB DI)
⑨ NORTHBOUND mm 0.11 MED (DI)
⑩ NORTHBOUND mm 0.84 U-TURN MED (DI)
⑪ NORTHBOUND mm 0.41 OUT (DI)
⑫ NORTHBOUND mm 0.82 OUT (DI)

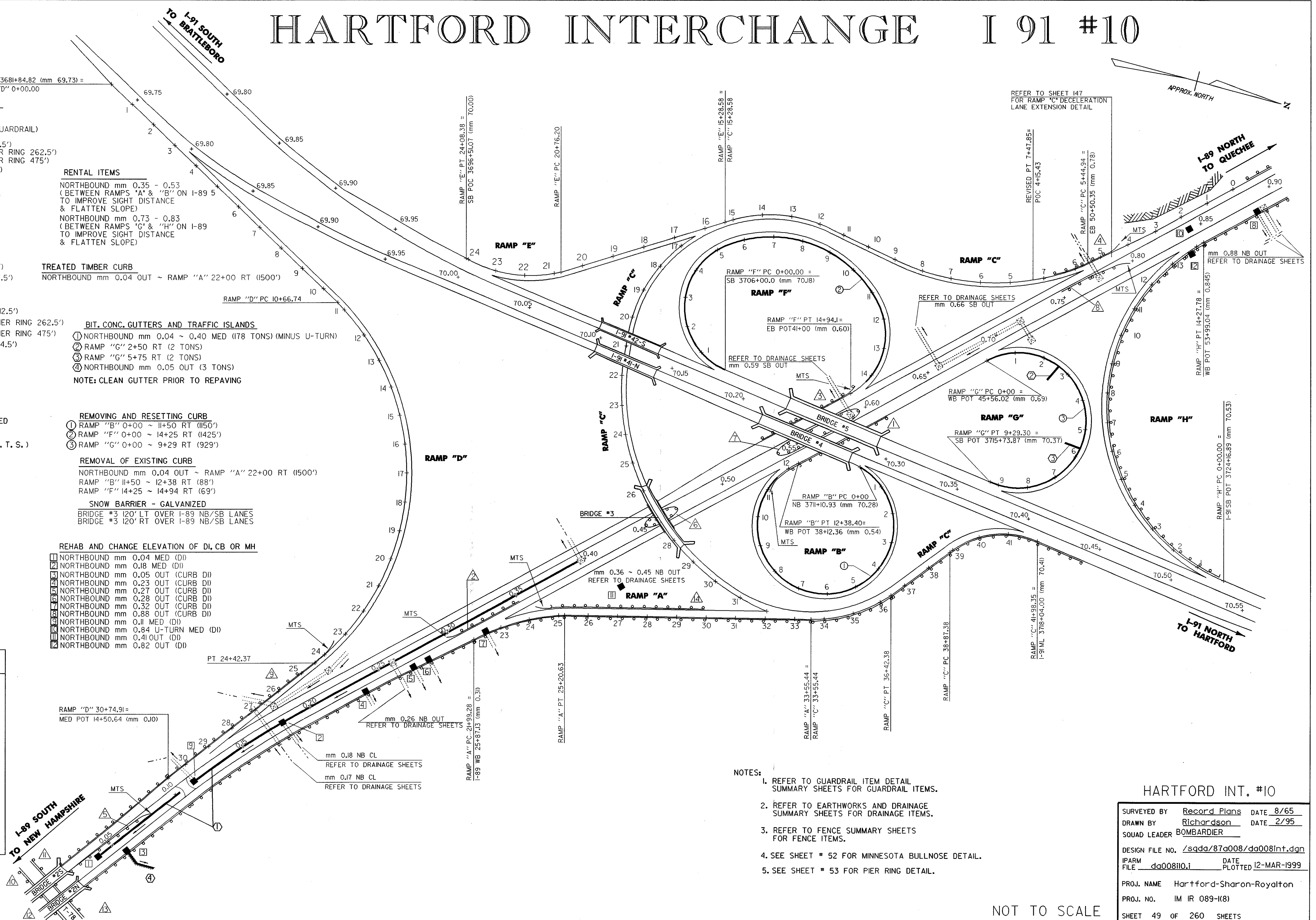
ANCHOR FOR STEEL BEAM RAIL
NORTHBOUND mm 0.61 OUT
RAMP "A" 30+00 LT
RAMP "C" 6+75 RT
SOUTHBOUND mm 0.75 MED

LEGEND

	EXISTING DI
	EXISTING DI - REHAB
	PAVED GUTTER
	CLEAN DITCH
	LEDGE
	EXISTING GUARDRAIL

DATUM

VERTICAL	N/A
HORIZONTAL	N/A



- NOTES:**
- REFER TO GUARDRAIL ITEM DETAIL SUMMARY SHEETS FOR GUARDRAIL ITEMS.
 - REFER TO EARTHWORKS AND DRAINAGE SUMMARY SHEETS FOR DRAINAGE ITEMS.
 - REFER TO FENCE SUMMARY SHEETS FOR FENCE ITEMS.
 - SEE SHEET # 52 FOR MINNESOTA BULLNOSE DETAIL.
 - SEE SHEET # 53 FOR PIER RING DETAIL.

HARTFORD INT. #10

SURVEYED BY Record Plans DATE 8/65
 DRAWN BY Richardson DATE 2/95
 SQUAD LEADER BOMBARDIER

DESIGN FILE NO. /sqda/87a008/da008int.dgn
 IPARM FILE da008ii0.i DATE PLOTTED 12-MAR-1999

PROJ. NAME Hartford-Sharon-Royalton
 PROJ. NO. IM IR 089-I(8)
 SHEET 49 OF 260 SHEETS

NOT TO SCALE