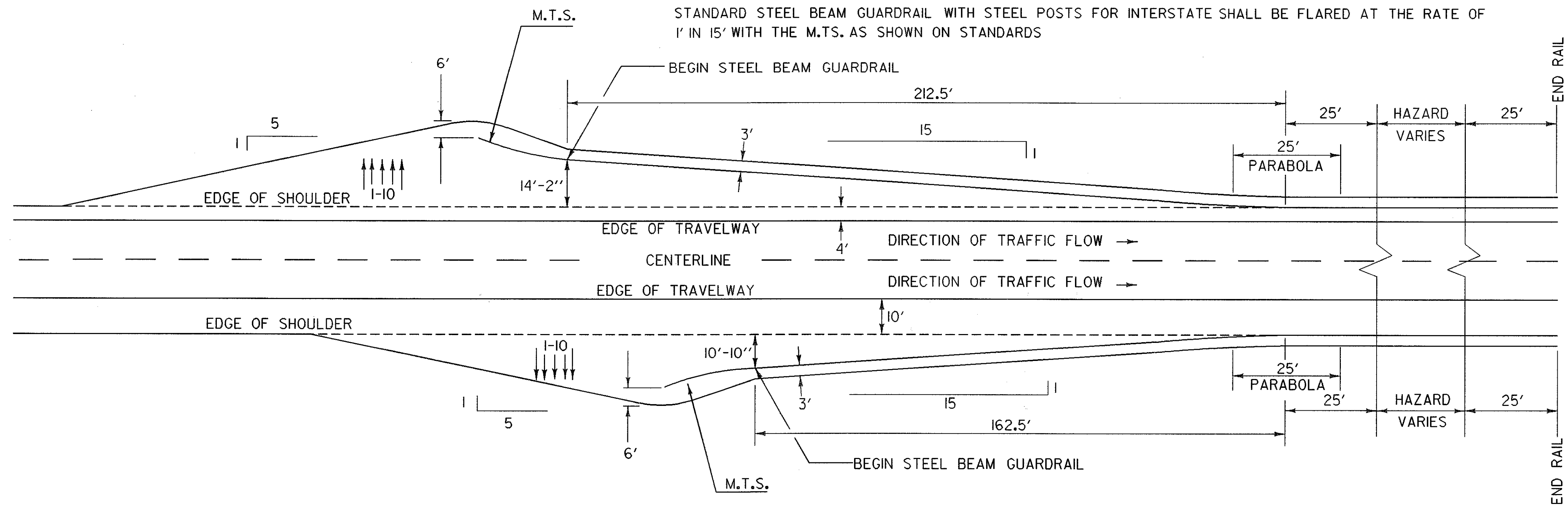


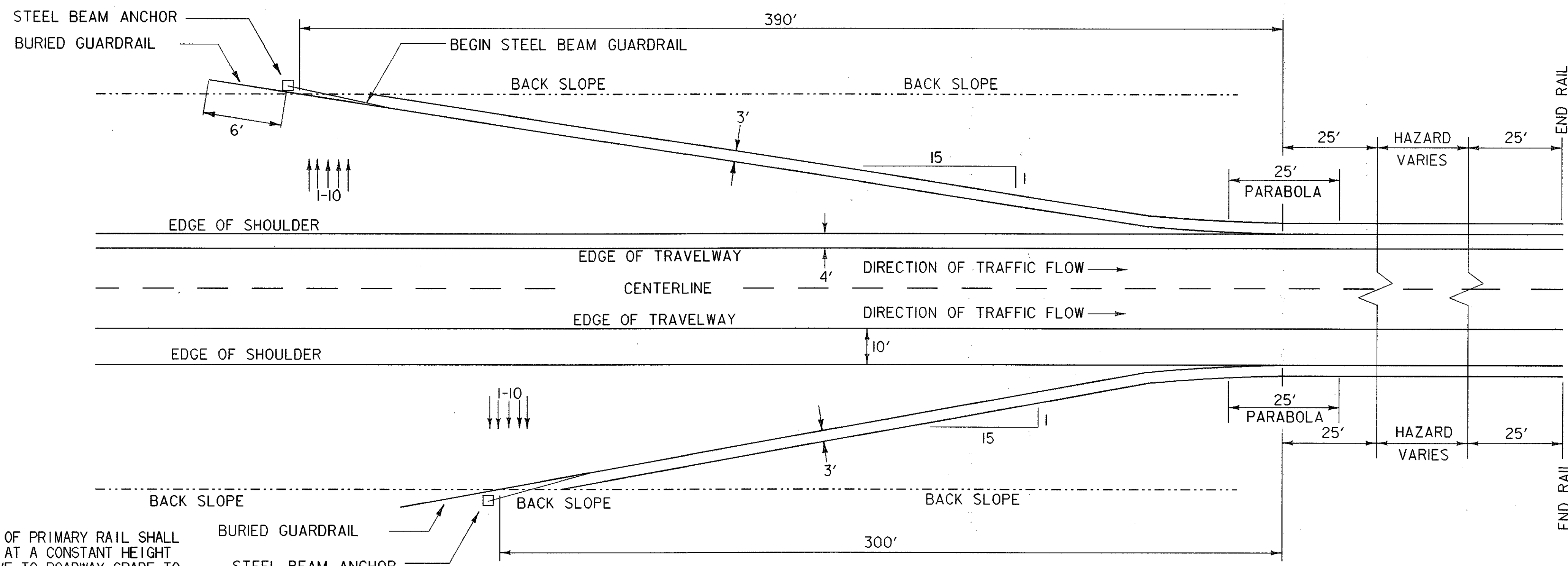
GUARDRAIL DETAILS

STANDARD STEEL BEAM GUARDRAIL WITH STEEL POSTS FOR INTERSTATE SHALL BE FLARED AT THE RATE OF 1' IN 15' WITH THE M.T.S. AS SHOWN ON STANDARDS



TAPER DETAIL WITH MANUFACTURED TERMINAL SECTION (M.T.S.)

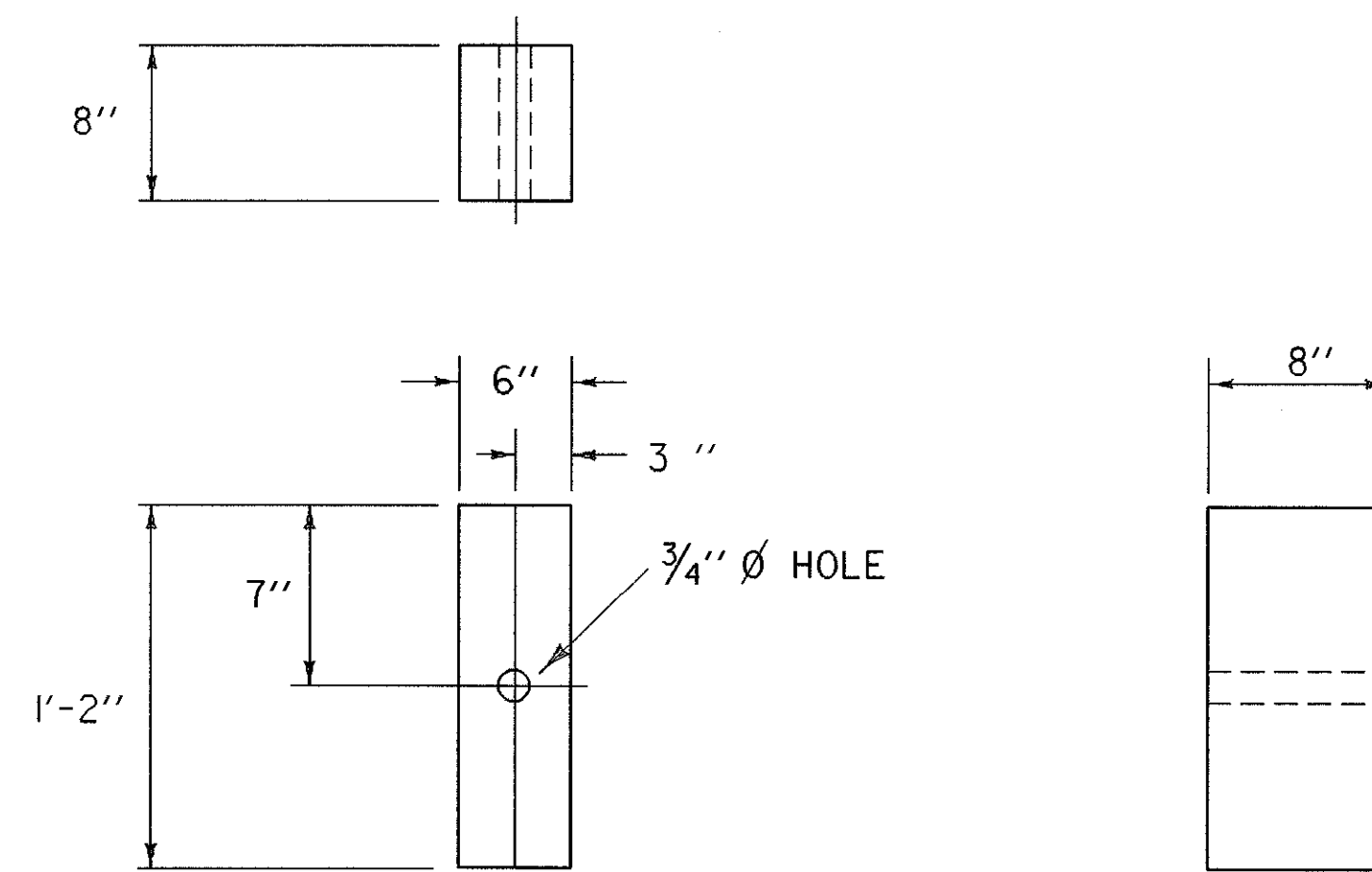
NOT TO SCALE



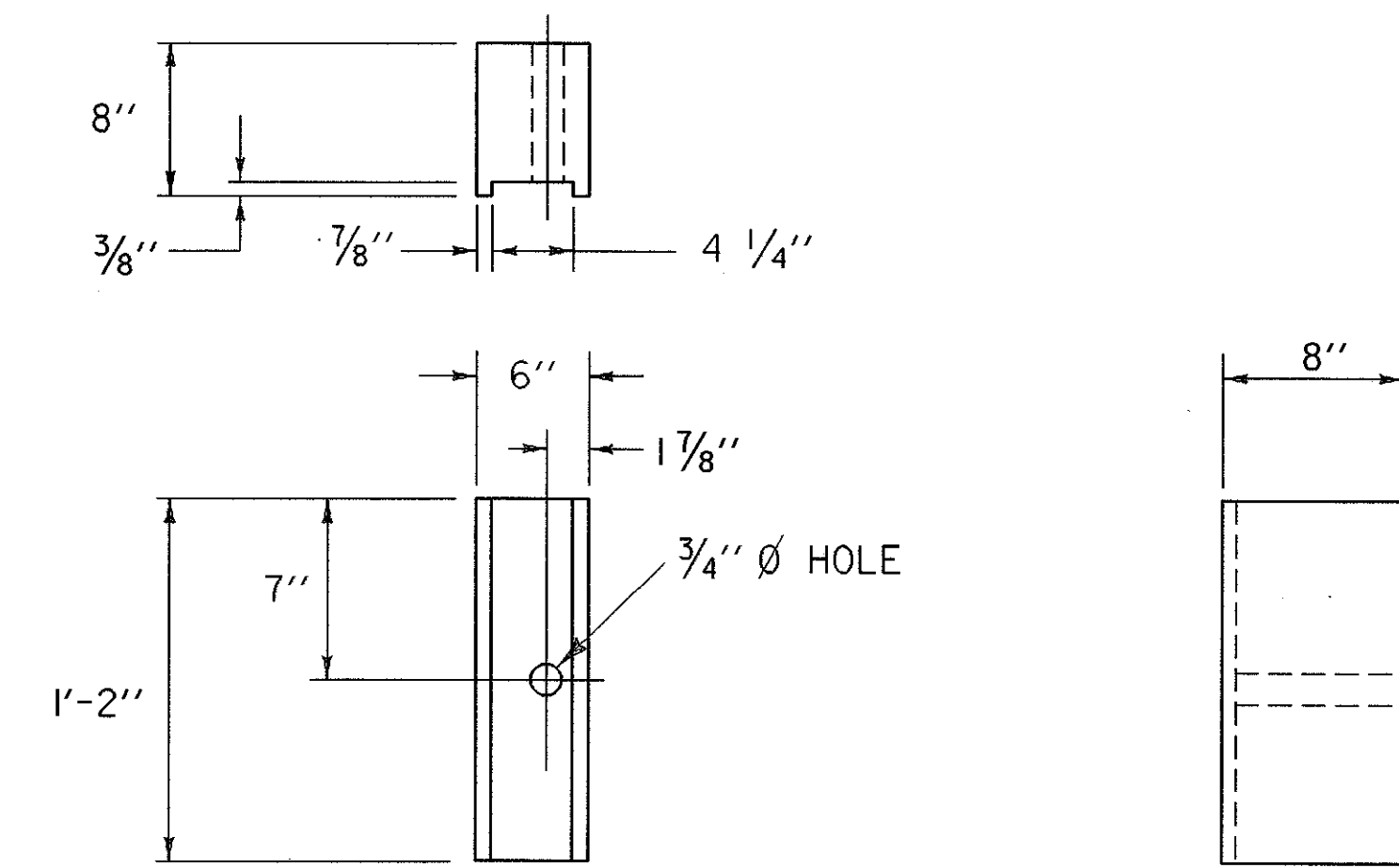
BURIED IN BACK SLOPE DETAIL

NOT TO SCALE

- HEIGHT OF PRIMARY RAIL SHALL REMAIN AT A CONSTANT HEIGHT RELATIVE TO ROADWAY GRADE TO POINT OF DITCH BOTTOM.
- ADDITION OF RUB RAIL IS REQUIRED WHEN OPENING BENEATH PRIMARY RAIL EXCEEDS 18". RUB RAIL EXTENDS FROM THE EDGE OF SHOULDER TO THE BACK SLOPE.



BLOCK, WOOD - ROUTED
6" X 8" X 1'-2"
FOR USE W/ WOOD POSTS ONLY



BLOCK, WOOD - ROUTED
6" X 8" X 1'-2"
FOR USE W/ STEEL POSTS ONLY

- NOTES:
- BLOCKS SHALL BE MADE OF TIMBER WITH A STRESS GRADE OF 1200 PSI OR MORE. TESTING SHALL BE IN ACCORDANCE WITH WEST COAST LUMBER INSPECTION BUREAU, SOUTHERN PINE INSPECTION BUREAU OR OTHER APPROPRIATE ASSOCIATION. TIMBER FOR BLOCKS SHALL BE ROUGH SAWN (UNPLANED) WITH DIMENSIONS INDICATED. THE SIZE TOLERANCE OF ROUGH SAWN BLOCKS IN THE DIRECTION OF THE BOLT HOLES SHALL BE NOT MORE THAN +/- 1/4".
 - SUPPLY WOOD BLOCKS PER AASTO M 168.
 - TREAT WITH PRESERVATIVE PER AASTO M 133.

GUARDRAIL DETAILS

DRAWN BY	Ross	DATE	10/94
SQUAD LEADER	Nyquist		
DESIGN FILE NO.	/sada/87a008/da008det.dgn		
IPARM FILE	da008qr3.l	DATE PLOTTED	12-MAR-1999
PROJ. NAME	Hartford-Sharon-Royalton		
PROJ. NO.	IM IR 089-(18)		
SHEET	48	OF	260 SHEETS

NOT TO SCALE