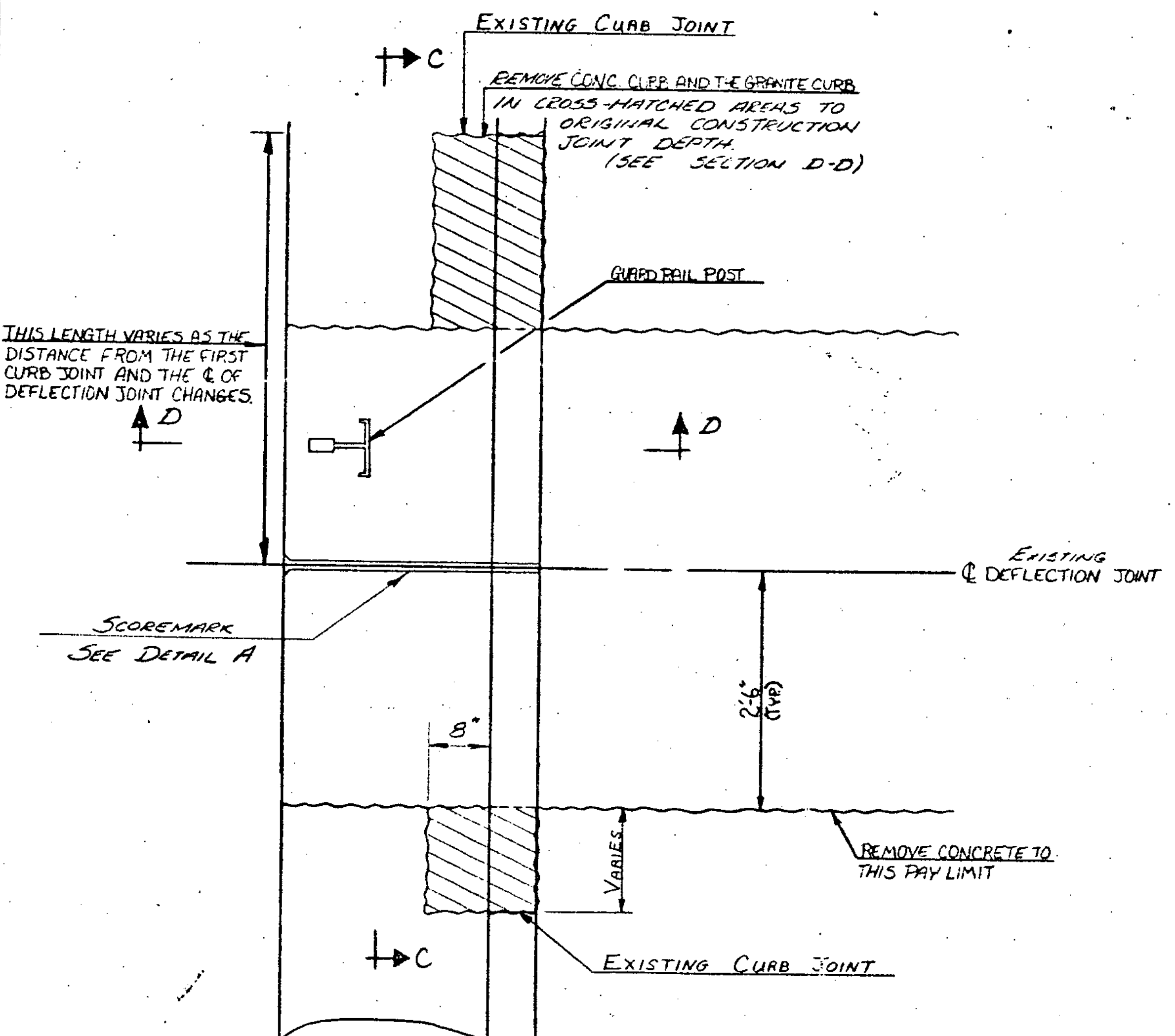


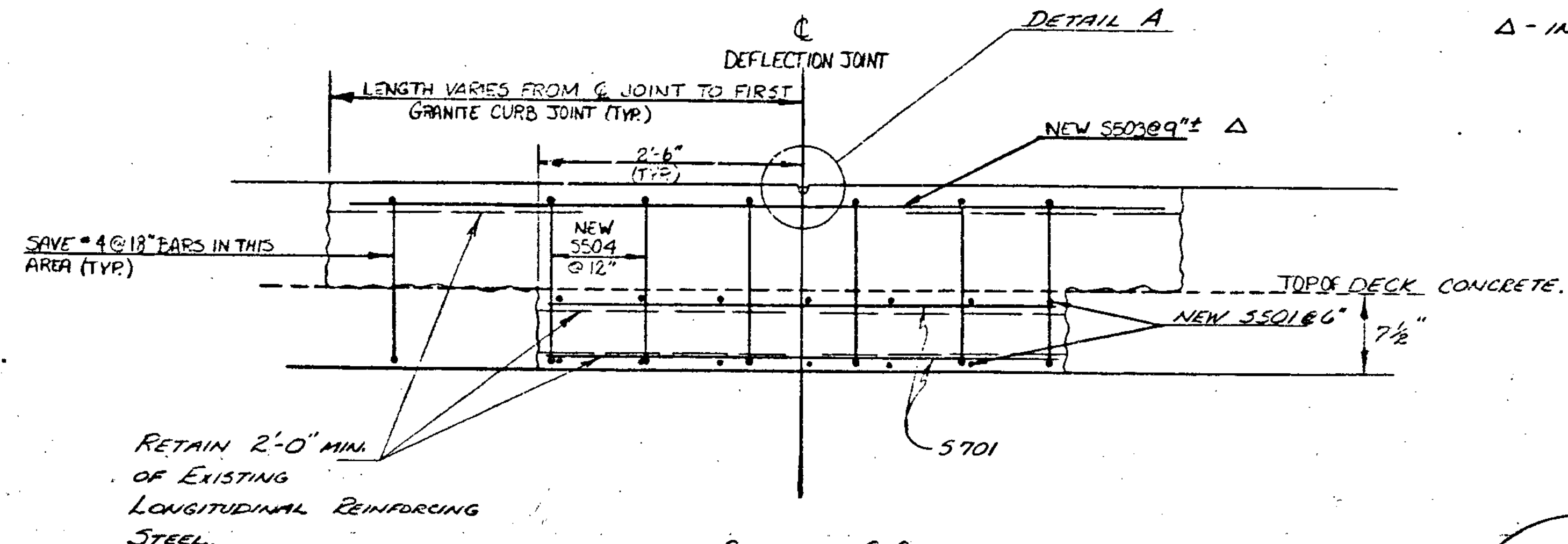
NOTE: THE POSITIONING OF THE GUARDRAIL POSTS VARIES.

PLAN-EXISTING DEFLECTION JOINT
SCALE 1/2"=1'-0"

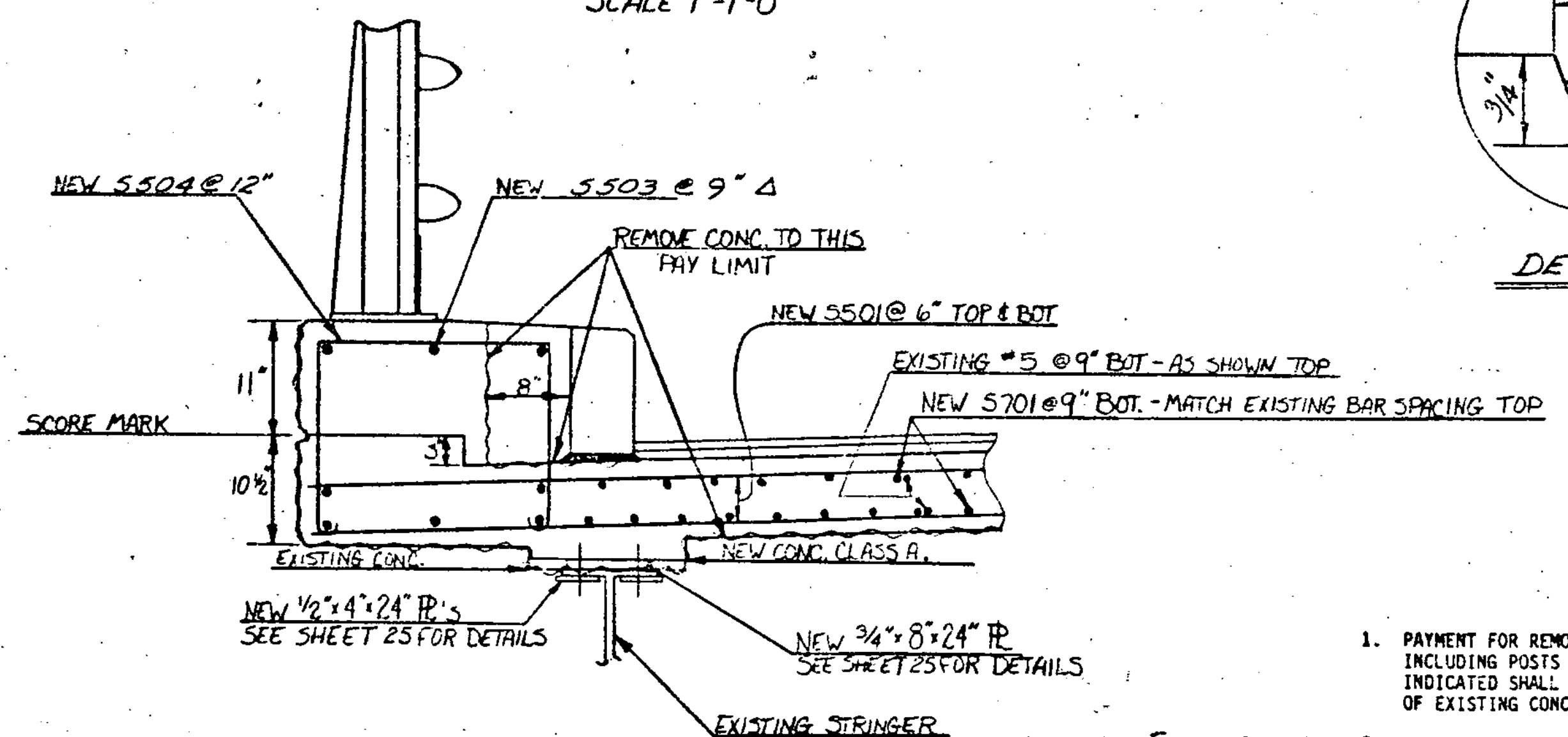


DETAIL A
SCALE 1"=1'-0"

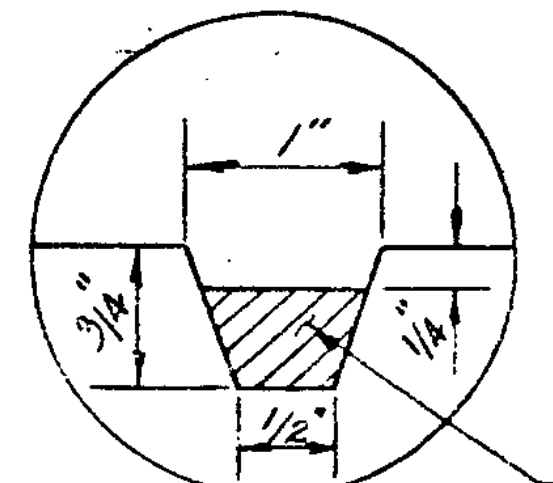
NOTE
ANY CUTS IN EXISTING CONCRETE SHALL HAVE A 1" DEEP SAW CUT ON ALL SURFACES.



SECTION C-C
SCALE 1"=1'-0"



SECTION D-D
SCALE 1"=1'-0"



DETAIL A

JOINT SEALER; POLYURETHANE. COST TO BE SUBSIDIARY TO THE UNIT BID PRICE FOR CONCRETE CLASS A.

NOTES

1. PAYMENT FOR REMOVAL OF EXISTING CONCRETE, GRANITE CURB, AND GUARD RAIL, INCLUDING POSTS AS REQUIRED, AT DEFLECTION JOINT LOCATIONS TO LIMITS AS INDICATED SHALL BE AT THE UNIT BID PRICE PER CUBIC YARD FOR "REMOVAL OF EXISTING CONCRETE OR MASONRY".
2. GRANITE CURB REMOVED SHALL BE MATCH MARKED FOR LOCATION AND RESET WITH NEW ANCHORS AS REQUIRED. PAYMENT SHALL BE SUBSIDIARY TO "CONCRETE, CLASS A".
3. GUARD RAIL REMOVED SHALL BE RESET, INCLUDING NEW POST ANCHORS AS REQUIRED. PAYMENT SHALL BE SUBSIDIARY TO "CONCRETE, CLASS A".

STATE OF VERMONT AGENCY OF TRANSPORTATION	
Town of HARTFORD	Bridge No. 44 N&S
Highway No. 191	Log Sta. Surv. Sta.
DEFLECTION JOINT DETAILS	
I 91 OVER THE WHITE RIVER AND U.S. 4	
Designed By A. ELWOOD	Drawn By K. LYONS
Checked By A. ELWOOD	Bridge Design Supervisor R.S. HAUPT Date 8-84
PROJECT HARTFORD	PROJECT NO. IR 91-2(1)
I.G.C. Info.	
Bridge Sheet No.	Sheet 25 of 30

BRIDGE 02185