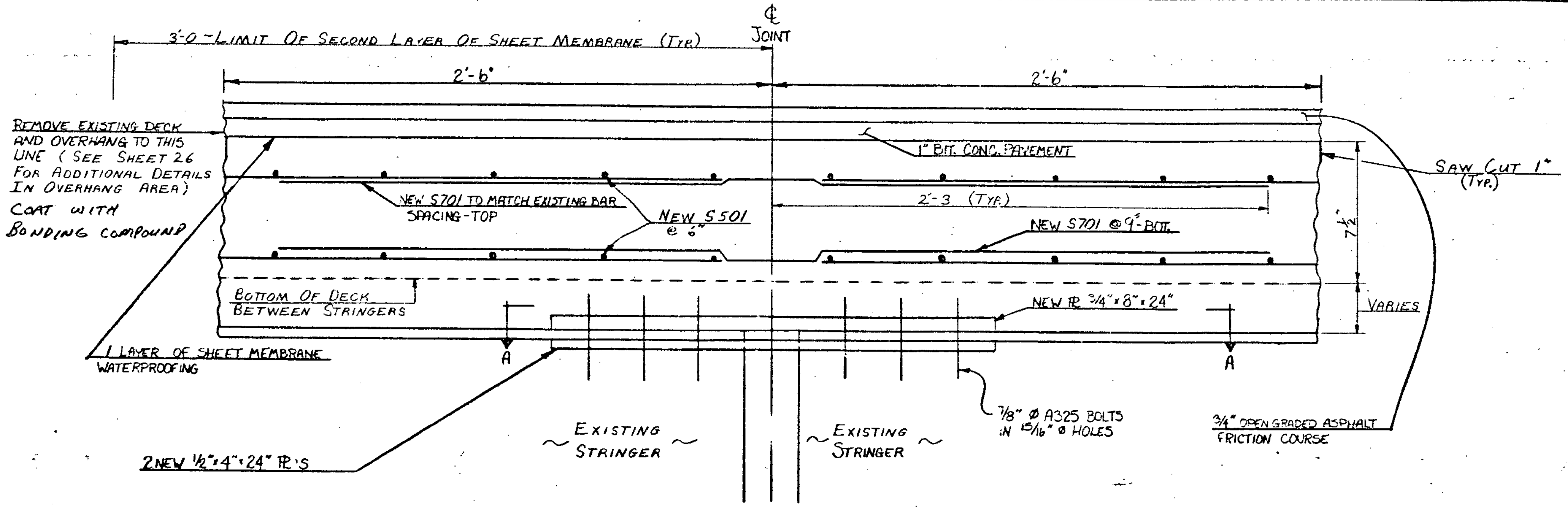
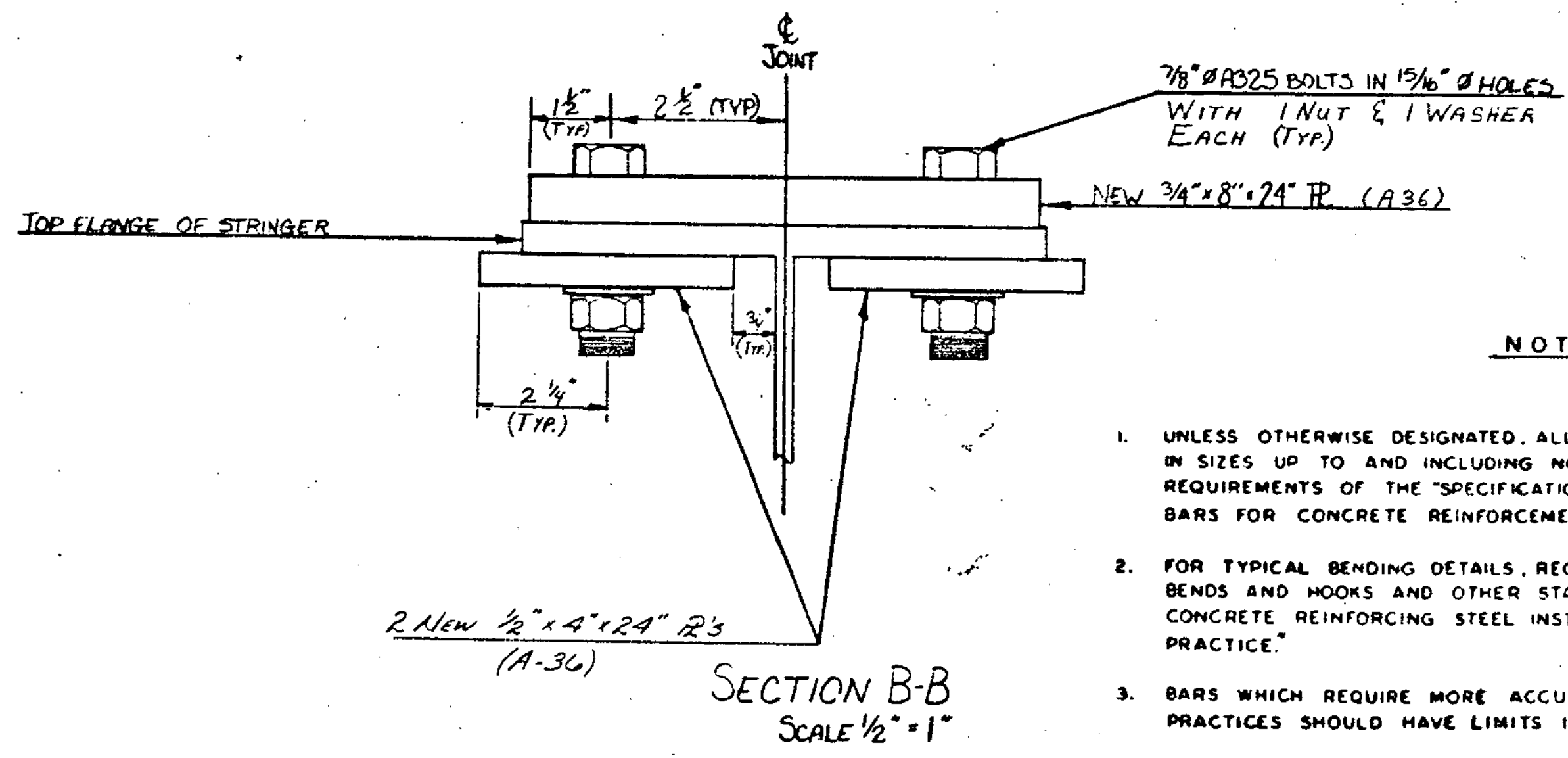


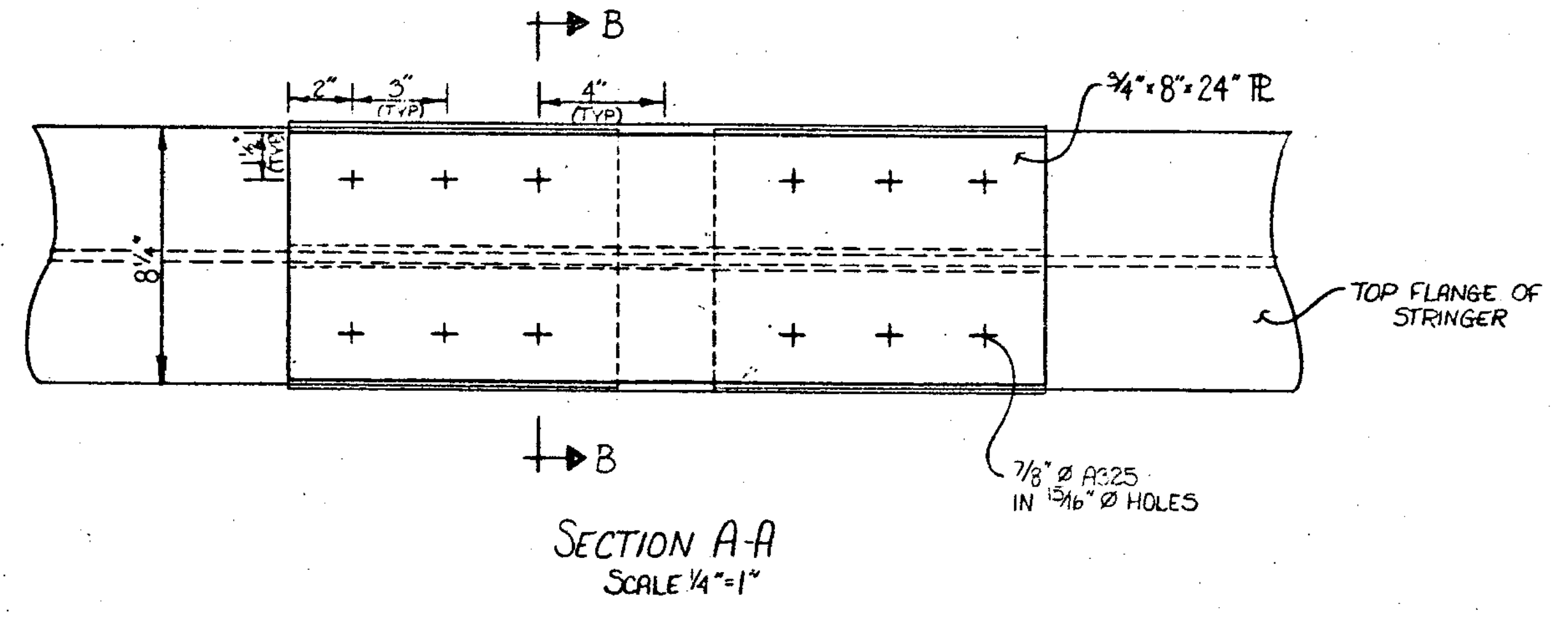
SECTION-EXISTING DEFLECTION JOINT
SCALE 1/4" = 1"
(TO BE REMOVED)



SECTION - NEW DETAIL
AT OLD DEFLECTION JOINT
SCALE 1/4" = 1"



SECTION B-B
SCALE 1/2" = 1"



SECTION A-A
SCALE 1/4" = 1"

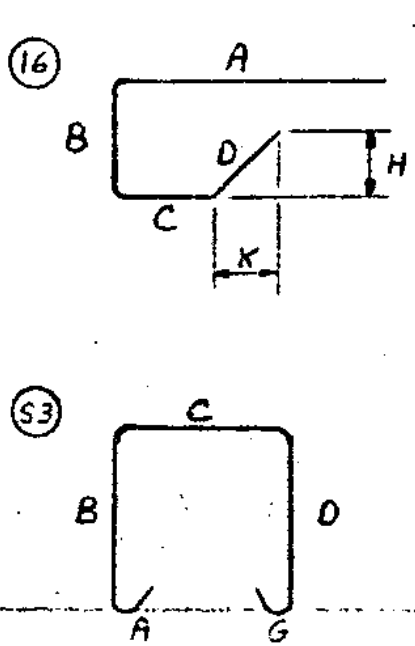
NOTES

- UNLESS OTHERWISE DESIGNATED, ALL BAR REINFORCEMENT FOR CONCRETE IN SIZES UP TO AND INCLUDING NO. 18 SHALL CONFORM TO THE REQUIREMENTS OF THE "SPECIFICATIONS FOR DEFORMED BILLET-STEEL BARS FOR CONCRETE REINFORCEMENT" AASHTO M 31 (ASTM A 615), GRADE 60.
- FOR TYPICAL BENDING DETAILS, RECOMMENDED PIN DIAMETER "D" OF BENDS AND HOOKS AND OTHER STANDARD PRACTICE SEE CURRENT CONCRETE REINFORCING STEEL INSTITUTE "MANUAL OF STANDARD PRACTICE."
- BARS WHICH REQUIRE MORE ACCURATE BENDING THAN STANDARD PRACTICES SHOULD HAVE LIMITS INDICATED.
- ALL DIMENSIONS ARE OUT TO OUT OF BAR EXCEPT "A" AND "G" ON STANDARD 180° AND 135° HOOKS.
- S502 AND S504 BARS TO BE GRADE 40.

NOTES

- DEFLECTION JOINTS ARE LOCATED IN THE DECK AT THE FOLLOWING LOCATIONS, ON BOTH THE NORTHBOUND AND SOUTHBOUND BRIDGES: ABOVE FLOOR BEAMS 12, 18, 24, 30, 36, 42, 48 AND 54.

BENT BARS



* DENOTES TWO EXTRA BAR ADDED FOR TESTING PURPOSES.

REINFORCING STEEL SCHEDULE														
NO. OF PIECES	SIZE	LENGTH	MARK	TYPE	A	B	C	D	E	F	G	H	J	K
360	5	34-10	S501	STR.										
* 98	5	8-6	S503	STR.										
* 114	5	4-8	S502	16	2-0	1-0	0-7	1-1				0-9		0-9
208	5	5-3	S504	S3	0-5 1/2	1-4	1-8	1-4						
* 1298	7	4-6	S701	STR.										

**STATE OF VERMONT
AGENCY OF TRANSPORTATION**

Town of **HARTFORD** Bridge No. 44 N1S
 Highway No. **191** Log Sta. _____
 Surv. Sta. _____

DEFLECTION JOINT DETAILS

191 OVER THE WHITE RIVER AND U.S. 4
 Designed By **A. ELWOOD** Drawn By **K. LYONS**
 Checked By **A. ELWOOD** Date **8-84** Bridge Design Supervisor **R.S. HAUPT** Date **8-84**

PROJECT **HARTFORD** PROJECT NO. **TR-91-2(1)**
 I.G.C. Info. _____
 Bridge Sheet No. _____ Sheet 25 of 30

BRIDGE 60145