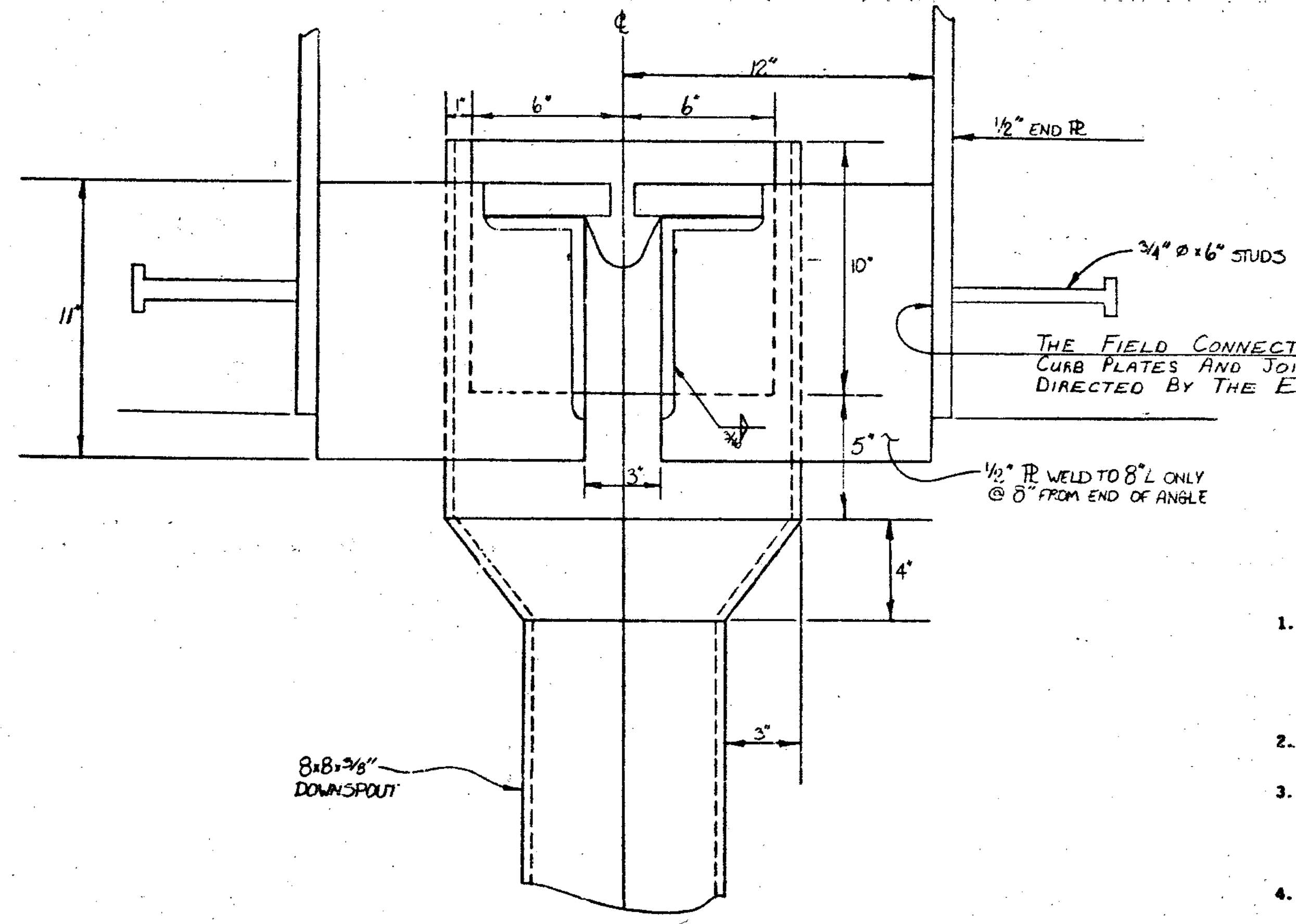


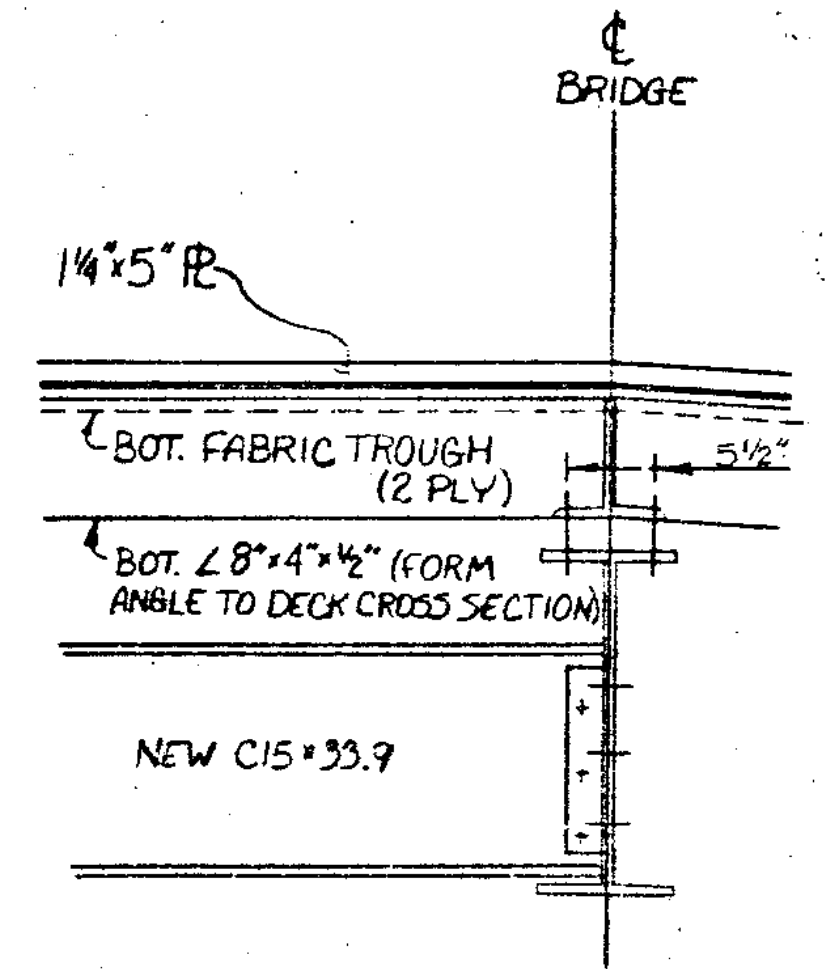
ELEVATION-NEW FIXED HINGE JOINT
SCALE 1"=1'-0"



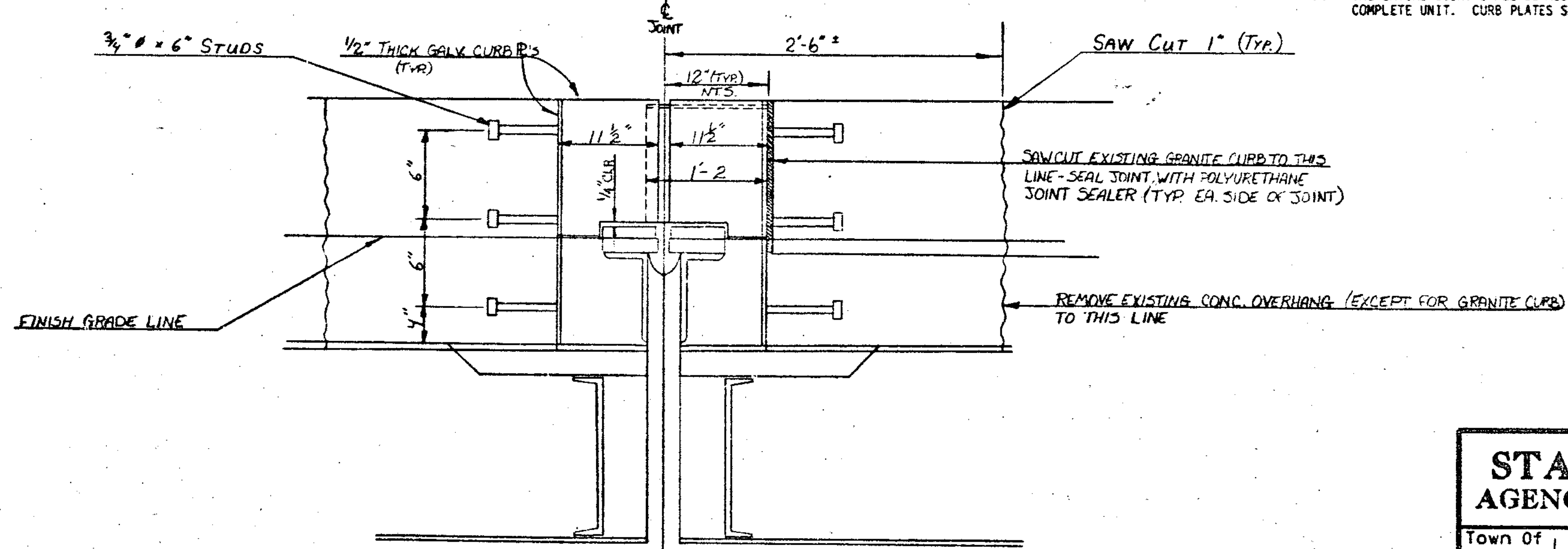
SECTION B-B (HOPPER & DOWNSPOUT
SCALE 1/4"=1"

- NOTES**
1. THE PAY LIMITS FOR ITEM 516.32, ELASTOMERIC EXPANSION DAM, SHALL BE FROM FASCIA TO FASCIA. THE UNIT BID PRICE SHALL INCLUDE ALL PLATES, FABRIC TROUGHS, ANGLES, FASTENERS, FABRICATION, TRANSPORTATION, LABOR, EQUIPMENT AND INCIDENTALS NECESSARY TO COMPLETE THE WORK. ALL STEEL IN THE EXPANSION DAM SHALL BE ASTM A-36 GALVANIZED/METALIZED, AS PER SECTION 731.06.
 2. THE EXPANSION JOINT SHALL BE COVERED DURING THE PLACING OF THE BRIDGE DECK CONCRETE IN THE JOINT AREA.
 3. THE 1-1/4" X 5" PLATES SHALL BE FURNISHED IN 4 LENGTHS, WITH BREAKS AT CENTERLINE AND 12 FEET LEFT AND RIGHT OF CENTERLINE. THE ANGLES 8" X 4" X 1/2" SHALL BE FURNISHED IN CONTINUOUS LENGTHS AND CONFORM TO THE CROSS-SECTION OF THE DECK. THE FABRIC TROUGH SHALL BE CONTINUOUS PREFORMED FABRIC MATERIAL CONFORMING TO SECTION 707.13.
 4. THE HOPPERS SHALL BE A-36 GALVANIZED. THE DOWNSPOUTS SHALL BE ASTM A-500 OR 501 GALVANIZED. PAYMENT FOR HOPPERS AND DOWNSPOUTS SHALL BE AT THE UNIT BID PRICE PER POUND FOR ITEM 506.93, STRUCTURAL STEEL (A-36).
 5. DRIP BEADS OF 1/4" X 4" TWO-PLY POLYESTER MATERIAL SHALL BE CEMENTED TO THE CENTER OF THE FABRIC TROUGH AT EACH END OF THE TROUGH WITH AN ADHESIVE APPROVED BY THE FABRIC MANUFACTURER.
 6. EPOXY BONDING COMPOUND, PAY ITEM 615.30, SHALL BE APPLIED TO THE VERTICAL CONCRETE SURFACES.
 7. THE ENTIRE JOINT SHALL BE ASSEMBLED, SHIPPED AND INSTALLED AS A COMPLETE UNIT. CURB PLATES SHALL NOT BE SHOP ATTACHED TO THE JOINT.

SEE BRACKET DETAILS SHEET 21



SCALE 1"=1'-0"



SECTION C-C
SCALE 1/8"=1"

STATE OF VERMONT AGENCY OF TRANSPORTATION	
Town of HARTFORD	Bridge No. 44 N.E.S.
Highway No. 191	Log Sta. Surv. Sta.
FIXED HINGE JOINT DETAILS	
I 91 OVER THE WHITE RIVER AND U.S. 4	
Designed by A. ELWOOD	Drawn by K. LYONS
Checked By A. ELWOOD	Bridge Design Supervisor R.S. HAUT
Date 3-84	Date 8-84
PROJECT HARTFORD	PROJECT NO. TR-91-2(1)
L.G.C. Info.	
Bridge Sheet No.	Sheet 24 of 30